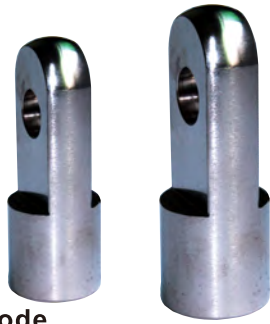


## I Knuckle



### Ordering code

**F-M16 X150 I**



① Accessories code	② Screw thread	③ Thread pitch	④ Code
	M3 : M3	050 : 0.5mm	I:I Knuckle
	M4 : M4	070 : 0.7mm	
	M5 : M5	080 : 0.8mm	
	M6 : M6	100 : 1.0mm	
	M8 : M8	125 : 1.25mm	
	M10 : M10		
	M12 : M12		
	M14 : M14		
	M16 : M16		
	M18 : M18	150 : 1.5mm	
	M20 : M20		
	M22 : M22		
	M26 : M26		
	M27 : M27		
	M36 : M36	200 : 2.0mm	
	M42 : M42		

### Table for I knuckle and cylinder

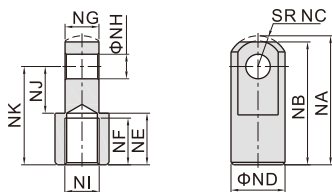
Cylinder Accessory	SE							SAI								
	32	40	50	63	80	100	125	32	40	50	63	80	100	125	160	200
F-M10X125I	•							•								
F-M12X125I		•							•							
F-M16X150I			•	•						•	•					
F-M20X150I					•	•						•	•			
F-M27X200I							•							•		
F-M36X200I															•	•

Cylinder Accessory	SGC				SC/SAU				SC				JSI									
	125	160	200	250	32	40	50	63	80	100	125	160	200	250	32	40	50	63	80	100	125	
F-M10X125I					•										•							
F-M12X125I						•																
F-M14X150I																	•					
F-M16X150I							•	•														
F-M18X150I																			•	•		
F-M20X150I									•	•												
F-M22X150I																					•	
F-M26X150I																						•
F-M27X200I					•									•								•
F-M36X200I		•	•										•	•								
F-M42X200I				•														•				

Cylinder Accessory	MI								MPG				
	8	10	12	16	20	25	32	40	6	8	10	12	16
F-M3X050I									•				
F-M4X070I	•	•								•	•		
F-M5X080I												•	•
F-M6X100I			•	•									
F-M8X125I					•								
F-M10X125I						•	•						
F-M12X125I								•					

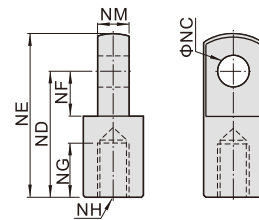
### Dimensions

#### M14\M18\M22\M26



Type\Item	NA	NB	NC	ND	NE	NF	NG	NH	NJ	NK	NI
F-M14X150I	52.5	50	12.5	22	21	19	13.8	10	19	40	M14×1.5
F-M18X150I	66.5	64	16.5	28	27	24	19.8	14	24	50	M18×1.5
F-M22X150I	83.5	80	23.5	40	29	26	29.8	22	34	60	M22×1.5
F-M26X150I	83.5	80	23.5	40	29	26	29.8	22	34	60	M26×1.5

#### Others



Type\Item	NC	ND	NE	NF	NG	NH	NM
F-M3x050I	3	12	15.5	5	5	M3×0.5	3
F-M4x070I	4	16	21	6.8	8	M4×0.7	4
F-M5x080I	5	25	32	14.1	7.5	M5×0.8	6.3
F-M6x100I	6	21	28	8.5	8	M6×1.0	6
F-M8x125I	8	30	40	11	15	M8×1.25	8
F-M10x125I	10	40	50	15	20	M10×1.25	10
F-M12x125I	12	48	62	24	20	M12×1.25	12
F-M16x150I	16	64	82	32	23	M16×1.5	16
F-M20x150I	20	80	102	40	30	M20×1.5	20
F-M27x200I	30	110	139	51	45	M27×2.0	30
F-M36x200I	35	144	181	65	55	M36×2.0	35
F-M42x200I	40	168	211	85	62	M42×2.0	40