

Y Knuckle



Table for Y knuckle and cylinder

Cylinder Accessory	SE						SAI									
	32	40	50	63	80	100	125	32	40	50	63	80	100	125	160	200
F-M10X125Y	•							•								
F-M12X125Y		•							•							
F-M16X150Y			•	•						•	•					
F-M20X150Y					•	•						•	•			
F-M27X200Y							•							•		
F-M36X200Y															•	•

Cylinder Accessory	SGC				SC/SAU				SC				JSI										
	125	160	200	250	32	40	50	63	80	100	125	160	200	250	32	40	50	63	80	100	125		
F-M10X125Y					•										•								
F-M12X125Y						•																	
F-M14X150Y																			•				
F-M16X150Y							•	•															
F-M18X150Y																				•	•		
F-M20X150Y									•	•													
F-M22X150Y																						•	
F-M26X150Y																							•
F-M27X200Y																							•
F-M36X200Y		•	•											•	•								•
F-M42X200Y				•																			•

Cylinder Accessory	MI						MPG						
	8	10	12	16	20	25	32	40	6	8	10	12	16
F-M3X050Y										•			
F-M4X070Y	•	•									•	•	
F-M5X080Y												•	•
F-M6X100Y				•	•								
F-M8X125Y					•								
F-M10X125Y						•	•						
F-M12X125Y							•						

Ordering code

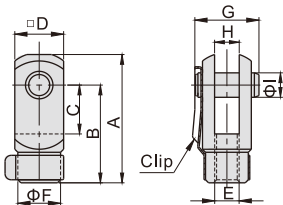
F-M16 X150 Y



① Accessories code	② Screw thread	③ Thread pitch	④ Code
	M3 : M3	050 : 0.5mm	Y:Y Knuckle
	M4 : M4	070 : 0.7mm	
	M5 : M5	080 : 0.8mm	
	M6 : M6	100 : 1.0mm	
	M8 : M8	125 : 1.25mm	
	M10 : M10		
	M12 : M12		
	M14 : M14		
	M16 : M16		
	M18 : M18	150 : 1.5mm	
	M20 : M20		
	M22 : M22		
	M26 : M26		
	M27 : M27		
	M36 : M36	200 : 2.0mm	
	M42 : M42		

Dimensions

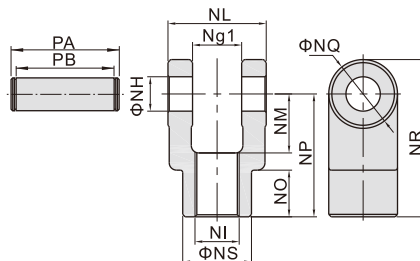
M10 and below



Type/Item	A	B	C	D	F
F-M3X050Y	15.5	12	5	6	6
F-M4X070Y	22	16	8	8	7
F-M5X080Y	28	21	10.2	12	10
F-M6X100Y	32	24	12	12	10
F-M8X125Y	42	32	16	16	14
F-M10X125Y	52	40	20	19	18

Type/Item	E	G	H	I
F-M3X050Y	M3×0.5	9	3	3
F-M4X070Y	M4×0.7	11.5	4	4
F-M5X080Y	M5×0.8	15.5	6.5	5
F-M6X100Y	M6×1.0	16	6	6
F-M8X125Y	M8×1.25	21	8	8
F-M10X125Y	M10×1.25	25	10	10

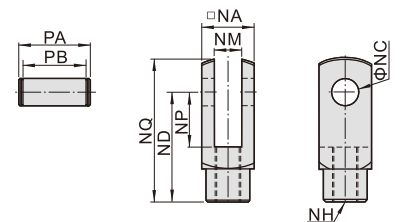
M14\M18\M22\M26



Type/Item	NG1	NH	NI	NL	NM
F-M14X150Y	14.2	10	M14×1.5	27.8	19
F-M18X150Y	20.2	14	M18×1.5	39.8	24
F-M22X150Y	30.2	22	M22×1.5	59.8	34
F-M26X150Y	30.2	22	M26×1.5	59.8	34

Type/Item	NO	NP	NQ	NR	NS	PA	PB
F-M14X150Y	17	40	22	51	22	34.6	28.8
F-M18X150Y	19	50	28	64	28	47	40.8
F-M22X150Y	20	65	40	85	40	69.2	60.8
F-M26X150Y	20	65	40	85	40	69.2	60.8

Others



Type/Item	NA	NC	ND	NP	NQ
F-M12X125Y	25.4	12	48	24	62
F-M16X150Y	32	16	64	32	80
F-M20X150Y	44.4	20	80	40	101
F-M27X200Y	54	30	110	55	139
F-M36X200Y	70	35	144	73	179
F-M42X200Y	85	40	168	86	211

Type/Item	NM	NH	PA	PB
F-M12X125Y	12	M12×1.25	32.4	26.2
F-M16X150Y	16	M16×1.5	39	32.8
F-M20X150Y	20	M20×1.5	53.4	45.2
F-M27X200Y	30	M27×2.0	64.2	54.8
F-M36X200Y	35	M36×2.0	80.2	70.8
F-M42X200Y	40.3	M42×2.0	115	93