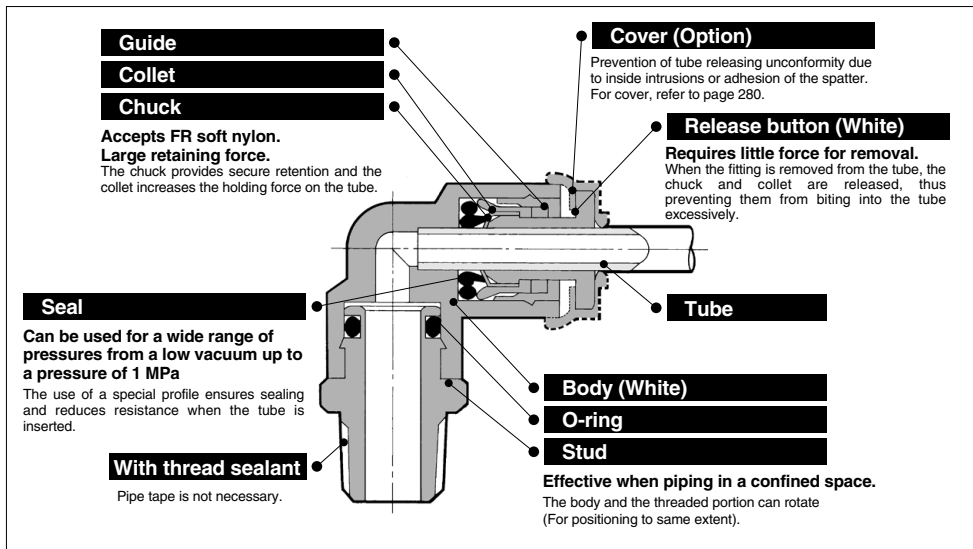


Flame Resistant (Equivalent to UL-94 Standard V-0) FR One-touch Fittings **KR-W2 Series**



Made to Order

| Symbol | Specifications |
|--------|---|
| X2 | Copper-free (With electroless nickel plated) |

Suffix "X2" to the end of part number.
Example) KRH06-01SW2-X2

Applicable Tubing

| | |
|---------------|---|
| Tube material | FR double layer, FR soft nylon FR double layer polyurethane, FR three-layer polyurethane |
| Tube O.D. | ø6, ø8, ø10, ø12 |

Specifications

| | | |
|--------------------------------------|-------------------------|---|
| Fluid | | Air/Water (1, 2) |
| Operating pressure range (3) | | -100 kPa to 1 MPa |
| Proof pressure (at 23°C) | | 3 MPa |
| Ambient and fluid temperature | | -5 to 60°C (Water: 0 to 60°C) (No freezing) |
| Thread | Mounting section | JIS B 0203 (Taper thread for piping) JIS B 0205 (Metric coarse thread) |
| | Nut section | JIS B 0205 (Metric fine thread) |
| Seal on the threads | | With sealant |
| Flame resistance | | The external resin parts are equivalent to UL-94 standard V-0. |

- Note 1) The surge pressure must be under the maximum operating pressure.
 Note 2) Deionized water is not recommended for use as it may affect the material used in the fittings.
 In addition, it is known to degrade the water quality.
 Note 3) Do not use the fittings with a leak tester or for vacuum retention because they are not guaranteed for zero leakage.

Principal Parts Material

| | |
|----------------|---|
| Body | C3604, Flame resistant PBT (UL-94 standard V-0) |
| Stud | C3604 (Thread portion) |
| Chuck | Stainless steel 304 |
| Guide | Stainless steel 304, Flame resistant PBT (UL-94 standard V-0) |
| Collet | POM |
| Release button | Flame resistant PBT (UL-94 standard V-0) |
| Seal, O-ring | NBR |
| Gasket | Stainless steel 304, NBR |
| Cover (Option) | Flame resistant PBT, Flame resistant CR (UL-94 standard V-0) |



Model

Male connector

KRH-W2 P.276



Use to pipe in the same direction from female thread. Most general type.

Union elbow

KRL-W2 P.277



Use to connect tubes at right angles.

Plug-in reducer

KRR-W2 P.279



Use to size down One-touch fittings.

Straight union

KRH-W2 P.276



Use to connect tubes in the same direction.

Extended male elbow

KRW-W2 P.277



Basically, it is used together with male elbow. Different point is that it is used for fittings to avoid from interfering with each other by making the piping two-level.

Union "Y"

KRU-W2 P.278



Use to branch line in the same direction.

Male elbow

KRL-W2 P.276



Use to pipe at right angles to female thread. Most general type.

Extended plug-in elbow

KRW-W2 P.279



Use to change by 90° in a tube fetching direction from One-touch fittings. Can be used with the plug-in elbow for three-dimensional pipe arrangement.

Plug-in "Y"

KRU-W2 P.278



Use to branch line in the same direction from One-touch fittings.

45° male elbow

KRK-W2 P.276



Use to pipe in 45° angle direction from female thread. Model in-between of male connector and male elbow.

Male branch tee

KRT-W2 P.277



Use to branch line from female thread in both 90° directions.

Branch

KRU-W2 P.278



Use to branch line in the same direction from female thread.

Universal male elbow

KRV-W2 P.277



Universal male elbow allows thread connection by using a socket wrench for confined spaces.

Union tee

KRT-W2 P.277



Use to connect tubes in both 90° directions.

Bulkhead union

KRE-W2 P.279



Use to connect tubes through a panel.

Plug-in elbow

KRL-W2 P.279



Use to change by 90° in a tube fetching direction from One-touch fittings.

Male run tee

KRY-W2 P.278



Use to branch line in the same direction from female thread and in 90° direction.

Bulkhead Connector

KRE-W2 P.279



Use to connect male thread and tube through a panel.

Spatter cover

KR P.280



Prevention of tube releasing unconformity due to an inside intrusion or adhesion of the spatter.

Spatter cover

KR-□C1 P.280



Prevention of tube releasing unconformity due to an inside intrusion or adhesion of the spatter.

Plug

KRP P.280



Use to plug unused One-touch fittings.

KQ2

KQ62

**KS
KX**

KM

KF

M

**H/DL
L/LL**

KC

KK

KK130

DM

KDM

KB

KR

KA

KQ62

KG

KFG2

MS

KKA

KP

LQ

MQR

T

IDK

KR-W2 Series

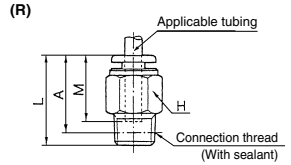
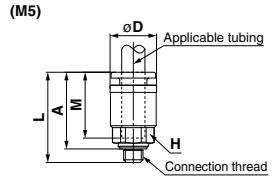
Dimensions

Male Connector: KRH-W2



| Applicable tubing O.D. (mm) | Connection thread M, R | Model | H (width across flats) | L | A* | M | Effective area (mm ²) | | Weight (g) |
|-----------------------------|------------------------|-------------|------------------------|------|------|------|-----------------------------------|---------------|------------|
| | | | | | | | FR double layer | FR soft nylon | |
| 6 | M5 x 0.8 | KRH06-M5W2 | 10 | 23.3 | 19.8 | 17 | 4 | 4 | 6 |
| | 1/8 | KRH06-01SW2 | 12 | 21.6 | 18.5 | | | | |
| | 1/4 | KRH06-02SW2 | 14 | 22.5 | 17 | | | | |
| | 3/8 | KRH06-03SW2 | 17 | 20.9 | 15.5 | | | | |
| 8 | 1/8 | KRH08-01SW2 | 14 | 27.1 | 24 | 18.5 | 26.1 | 18.0 | 19 |
| | 1/4 | KRH08-02SW2 | | | | | | | |
| | 3/8 | KRH08-03SW2 | | | | | | | |
| | 1/2 | KRH08-04SW2 | | | | | | | |
| 10 | 1/8 | KRH10-01SW2 | 17 | 29.1 | 26 | 21 | 26.1 | 26.1 | 19 |
| | 1/4 | KRH10-02SW2 | | | | | | | |
| | 3/8 | KRH10-03SW2 | | | | | | | |
| | 1/2 | KRH10-04SW2 | | | | | | | |
| 12 | 1/4 | KRH12-02SW2 | 19 | 34 | 28.5 | 22 | 58.3 | 46.1 | 34 |
| | 3/8 | KRH12-03SW2 | | | | | | | |
| | 1/2 | KRH12-04SW2 | | | | | | | |
| | 3/4 | KRH12-05SW2 | | | | | | | |

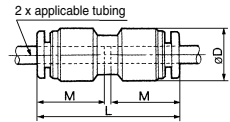
* Reference dimensions after R thread installation.



Straight Union: KRH-W2



| Applicable tubing O.D. (mm) | Model | øD | L | M | Effective area (mm ²) | | Weight (g) |
|-----------------------------|------------|------|------|------|-----------------------------------|---------------|------------|
| | | | | | FR double layer | FR soft nylon | |
| 6 | KRH06-00W2 | 12.8 | 34.5 | 17 | 10.4 | 5.6 | 4 |
| 8 | KRH08-00W2 | 15.2 | 38.5 | 18.5 | 26.1 | 18.0 | 6 |
| 10 | KRH10-00W2 | 18.5 | 42.5 | 21 | 41.5 | 29.5 | 11 |
| 12 | KRH12-00W2 | 20.9 | 44.5 | 22 | 58.3 | 46.1 | 14 |

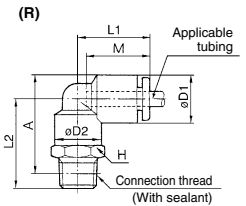
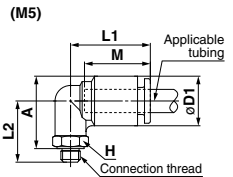


Male Elbow: KRL-W2



| Applicable tubing O.D. (mm) | Connection thread M, R | Model | H (width across flats) | øD1 | øD2 | L1 | L2 | A* | M | Effective area (mm ²) | | Weight (g) | | | |
|-----------------------------|------------------------|-------------|------------------------|------|-----|------|------|------|------|-----------------------------------|---------------|------------|------|------|------|
| | | | | | | | | | | FR double layer | FR soft nylon | | | | |
| 6 | M5 x 0.8 | KRL06-M5W2 | 8 | 12.8 | 8 | 20.5 | 15.8 | 18.7 | 17 | 3.5 | 3.5 | 5 | | | |
| | 1/8 | KRL06-01SW2 | 10 | | | | | | | | | | 22.1 | 25.5 | |
| | 1/4 | KRL06-02SW2 | 14 | | | | | | | | | | 26.5 | 27.5 | |
| | 3/8 | KRL06-03SW2 | 17 | | | | | | | | | | 27.9 | 29 | |
| 8 | 1/8 | KRL08-01SW2 | 12 | 15.2 | 12 | 23 | 28 | 30 | 18.5 | 21.6 | 14.9 | 21 | | | |
| | 1/4 | KRL08-02SW2 | 14 | | | | | | | | | | 29.4 | 31.5 | |
| | 3/8 | KRL08-03SW2 | 17 | | | | | | | | | | 26.1 | 32 | |
| | 1/2 | KRL08-04SW2 | 17 | | | | | | | | | | 29.5 | 33 | |
| 10 | 1/8 | KRL10-01SW2 | 17 | 18.5 | 17 | 26.5 | 30.9 | 34.5 | 21 | 35.2 | 25.0 | 36 | | | |
| | 1/4 | KRL10-02SW2 | | | | | | | | | | | 22 | 35.1 | 37 |
| | 3/8 | KRL10-03SW2 | | | | | | | | | | | 22 | 30.5 | 35.5 |
| | 1/2 | KRL10-04SW2 | | | | | | | | | | | 22 | 31.9 | 37 |
| 12 | 1/4 | KRL12-02SW2 | 17 | 20.9 | 17 | 28.5 | 36.1 | 39.5 | 22 | 50.2 | 39.7 | 28 | | | |
| | 3/8 | KRL12-03SW2 | | | | | | | | | | | 22 | 36.1 | 39.5 |
| | 1/2 | KRL12-04SW2 | | | | | | | | | | | 22 | 36.1 | 39.5 |
| | 3/4 | KRL12-05SW2 | | | | | | | | | | | 22 | 36.1 | 39.5 |

* Reference dimensions after R thread installation.

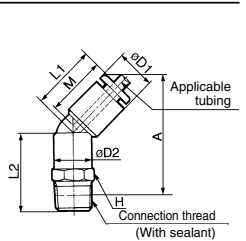


45° Male Elbow: KRK-W2



| Applicable tubing O.D. (mm) | Connection thread R | Model | H (width across flats) | øD1 | øD2 | L1 | L2 | A* | M | Effective area (mm ²) | | Weight (g) | | | |
|-----------------------------|---------------------|-------------|------------------------|------|-----|------|------|------|------|-----------------------------------|---------------|------------|------|------|------|
| | | | | | | | | | | FR double layer | FR soft nylon | | | | |
| 6 | 1/8 | KRK06-01SW2 | 10 | 12.8 | 10 | 18 | 19.6 | 33 | 17 | 6.9 | 3.4 | 12 | | | |
| | 1/4 | KRK06-02SW2 | 14 | | | | | | | | | | 24 | 35 | |
| | 3/8 | KRK06-03SW2 | 17 | | | | | | | | | | 25.4 | 36.5 | |
| | 1/2 | KRK06-04SW2 | 17 | | | | | | | | | | 21.1 | 37 | |
| 8 | 1/8 | KRK08-01SW2 | 12 | 15.2 | 12 | 20.5 | 21.1 | 37 | 18.5 | 19.7 | 13 | 13 | | | |
| | 1/4 | KRK08-02SW2 | 14 | | | | | | | | | | 25.5 | 39 | |
| | 3/8 | KRK08-03SW2 | 17 | | | | | | | | | | 26.9 | 41 | |
| | 1/2 | KRK08-04SW2 | 17 | | | | | | | | | | 23.1 | 42 | |
| 10 | 1/8 | KRK10-01SW2 | 17 | 18.5 | 17 | 24 | 26.5 | 43.5 | 21 | 30.9 | 23.2 | 26 | | | |
| | 1/4 | KRK10-02SW2 | | | | | | | | | | | 22 | 27.9 | 45 |
| | 3/8 | KRK10-03SW2 | | | | | | | | | | | 22 | 32.1 | 47.5 |
| | 1/2 | KRK10-04SW2 | | | | | | | | | | | 22 | 27 | 45.5 |
| 12 | 1/4 | KRK12-02SW2 | 17 | 20.9 | 17 | 25 | 28.4 | 47.5 | 22 | 44.5 | 35.1 | 28 | | | |
| | 3/8 | KRK12-03SW2 | | | | | | | | | | | 22 | 32.6 | 49.5 |
| | 1/2 | KRK12-04SW2 | | | | | | | | | | | 22 | 32.6 | 49.5 |
| | 3/4 | KRK12-05SW2 | | | | | | | | | | | 22 | 32.6 | 49.5 |

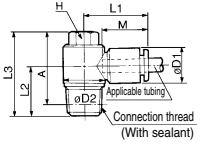
* Reference dimensions after R thread installation.



Universal Male Elbow: KRV-W2



| Applicable tubing O.D. (mm) | Connection thread R | Model | H (width across flats) | øD1 | øD2 | L1 | L2 | L3 | A* | M | Effective area (mm ²) | | Weight (g) | | | | | | |
|-----------------------------|---------------------|-------------|------------------------|------|------|------|------|------|------|------|-----------------------------------|---------------|------------|------|------|------|------|------|----|
| | | | | | | | | | | | FR double layer | FR soft nylon | | | | | | | |
| 6 | 1/8 | KRV06-01SW2 | 8 | 12.8 | 13.4 | 24 | 13.6 | 25.6 | 22.5 | 17 | 5.9 | 2.9 | 15 | | | | | | |
| | 1/4 | KRV06-02SW2 | 10 | | | | | | | | | | 15.4 | 23.5 | 18 | 30.5 | 25 | 26 | |
| | 3/8 | KRV06-03SW2 | 12 | | | | | | | | | | 17.6 | 28.5 | 14.6 | 27.6 | 24.5 | 24 | |
| 8 | 1/4 | KRV08-01SW2 | 12 | 15.2 | 17.6 | 28.5 | 18 | 31 | 25.5 | 18.5 | 16 | 11.2 | 30 | | | | | | |
| | 3/8 | KRV08-02SW2 | 14 | | | | | | | | | | 20.6 | 27.5 | 19.4 | 35.4 | 30 | 47 | |
| | 1/2 | KRV08-03SW2 | 14 | | | | | | | | | | 19 | 35 | 29.5 | 21 | 27 | 20.3 | 40 |
| 10 | 3/8 | KRV10-02SW2 | 14 | 18.5 | 20.6 | 31 | 19 | 35 | 30 | 21 | 27 | 20.3 | 49 | | | | | | |
| | 1/2 | KRV10-03SW2 | 17 | | | | | | | | | | 20.9 | 37.4 | 32 | 22 | 39 | 30.8 | 63 |
| | 3/4 | KRV10-04SW2 | 17 | | | | | | | | | | 24.1 | 40.6 | 33.5 | 22 | 39 | 30.8 | 80 |

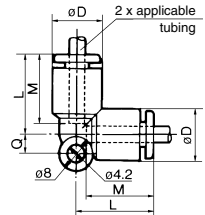


* Reference dimensions after R thread installation.

Union Elbow: KRL-W2



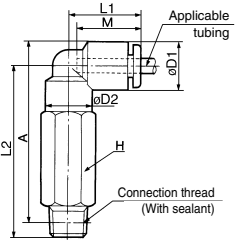
| Applicable tubing O.D. (mm) | Model | øD | L | Q | M | Effective area (mm ²) | | Weight (g) |
|-----------------------------|------------|------|------|-----|------|-----------------------------------|---------------|------------|
| | | | | | | FR double layer | FR soft nylon | |
| 6 | KRL06-00W2 | 12.8 | 20 | 5.3 | 17 | 9.0 | 4.2 | 6 |
| 8 | KRL08-00W2 | 15.2 | 23 | 6 | 18.5 | 21.6 | 14.9 | 10 |
| 10 | KRL10-00W2 | 18.5 | 26.5 | 6.8 | 21 | 35.2 | 25.0 | 17 |
| 12 | KRL12-00W2 | 20.9 | 28.5 | 7.5 | 22 | 50.2 | 39.7 | 21 |



Extended Male Elbow: KRW-W2



| Applicable tubing O.D. (mm) | Connection thread R | Model | H (width across flats) | øD1 | øD2 | L1 | L2 | A* | M | Effective area (mm ²) | | Weight (g) | | |
|-----------------------------|---------------------|-------------|------------------------|------|-----|------|------|------|------|-----------------------------------|---------------|------------|------|-----|
| | | | | | | | | | | FR double layer | FR soft nylon | | | |
| 6 | 1/8 | KRW06-01SW2 | 10 | 12.8 | 10 | 20 | 39.1 | 42.5 | 17 | 8.6 | 4.0 | 26 | | |
| | 1/4 | KRW06-02SW2 | 14 | | | | | | | | | 45.5 | 46.5 | 41 |
| | 3/8 | KRW06-03SW2 | 17 | | | | | | | | | 46.9 | 48 | 67 |
| 8 | 1/4 | KRW08-01SW2 | 12 | 15.2 | 12 | 23 | 49 | 51 | 18.5 | 20.5 | 14.2 | 47 | | |
| | 3/8 | KRW08-02SW2 | 14 | | | | | | | | | 50.4 | 52.5 | 74 |
| | 1/2 | KRW08-03SW2 | 17 | | | | | | | | | 56 | 59.5 | 66 |
| 10 | 3/8 | KRW10-02SW2 | 17 | 18.5 | 17 | 26.5 | 57.4 | 61 | 21 | 33.5 | 23.8 | 76 | | |
| | 1/2 | KRW10-04SW2 | 22 | | | | | | | | | 64.1 | 66 | 145 |
| | 3/4 | KRW10-05SW2 | 17 | | | | | | | | | 57 | 62 | 68 |
| 12 | 1/2 | KRW12-02SW2 | 17 | 20.9 | 17 | 28.5 | 58.4 | 63.5 | 22 | 47.7 | 37.7 | 147 | | |
| | 3/4 | KRW12-03SW2 | 22 | | | | | | | | | 65.1 | 68.5 | 178 |
| | 1 | KRW12-04SW2 | 22 | | | | | | | | | | | |

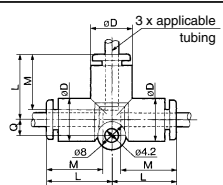


* Reference dimensions after R thread installation.

Union Tee: KRT-W2



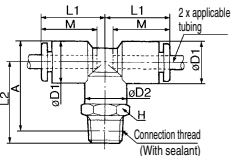
| Applicable tubing O.D. (mm) | Model | øD | L | Q | M | Effective area (mm ²) | | Weight (g) |
|-----------------------------|------------|------|------|-----|------|-----------------------------------|---------------|------------|
| | | | | | | FR double layer | FR soft nylon | |
| 6 | KRT06-00W2 | 12.8 | 20 | 5.3 | 17 | 10.6 | 6.4 | 10 |
| 8 | KRT08-00W2 | 15.2 | 23 | 6 | 18.5 | 25.6 | 17.7 | 15 |
| 10 | KRT10-00W2 | 18.5 | 26.5 | 6.8 | 21 | 40 | 28.4 | 25 |
| 12 | KRT12-00W2 | 20.9 | 28.5 | 7.5 | 22 | 57.4 | 45.4 | 29 |



Male Branch Tee: KRT-W2



| Applicable tubing O.D. (mm) | Connection thread R | Model | H (width across flats) | øD1 | øD2 | L1 | L2 | A* | M | Effective area (mm ²) | | Weight (g) | | |
|-----------------------------|---------------------|-------------|------------------------|------|-----|------|------|------|------|-----------------------------------|---------------|------------|------|----|
| | | | | | | | | | | FR double layer | FR soft nylon | | | |
| 6 | 1/8 | KRT06-01SW2 | 10 | 12.8 | 10 | 20 | 22.1 | 25.5 | 17 | 11.0 | 6.0 | 12 | | |
| | 1/4 | KRT06-02SW2 | 14 | | | | | | | | | 26.5 | 27.5 | 20 |
| | 3/8 | KRT06-03SW2 | 17 | | | | | | | | | 27.9 | 29 | 34 |
| 8 | 1/4 | KRT08-01SW2 | 12 | 15.2 | 12 | 23 | 23.6 | 28 | 18.5 | 26.3 | 18.2 | 14 | | |
| | 3/8 | KRT08-02SW2 | 14 | | | | | | | | | 28 | 30 | 22 |
| | 1/2 | KRT08-03SW2 | 17 | | | | | | | | | 29.4 | 31.5 | 36 |
| 10 | 3/8 | KRT10-02SW2 | 17 | 18.5 | 17 | 26.5 | 26.1 | 32 | 21 | 40.8 | 29.0 | 31 | | |
| | 1/2 | KRT10-04SW2 | 22 | | | | | | | | | 29.5 | 33 | 29 |
| | 3/4 | KRT10-05SW2 | 17 | | | | | | | | | 30.9 | 34.5 | 39 |
| 12 | 1/2 | KRT12-02SW2 | 17 | 20.9 | 17 | 28.5 | 30.5 | 35.5 | 22 | 57.2 | 45.2 | 41 | | |
| | 3/4 | KRT12-03SW2 | 22 | | | | | | | | | 31.9 | 37 | 31 |
| | 1 | KRT12-04SW2 | 22 | | | | | | | | | 36.1 | 39.5 | 68 |



* Reference dimensions after R thread installation.

KQ2

KQB2

KS
KX

KM

KF

M

H/DL
L/LL

KC

KK

KK130

DM

KDM

KB

KR

KA

KQG2

KG

KFG2

MS

KKA

KP

LQ

MQR

T

IDK

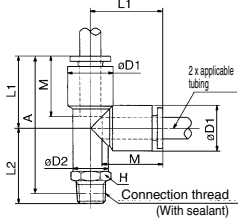
KR-W2 Series

Male Run Tee: KRY-W2



| Applicable tubing O.D. (mm) | Connection thread R | Model | H (width across flats) | øD1 | øD2 | L1 | L2 | A * | M | Effective area (mm ²) | | Weight (g) |
|-----------------------------|---------------------|-------------|------------------------|------|-----|------|------|------|------|-----------------------------------|---------------|------------|
| | | | | | | | | | | FR double layer | FR soft nylon | |
| 6 | 1/8 | KRY06-01SW2 | 10 | 12.8 | 10 | 20 | 22.1 | 39 | 17 | 10.6 | 6.4 | 12 |
| | 1/4 | KRY06-02SW2 | 14 | | | | 26.5 | 41 | | | | 20 |
| | 3/8 | KRY06-03SW2 | 17 | | | | 27.9 | 42.5 | | | | 34 |
| 8 | 1/8 | KRY08-01SW2 | 12 | 15.2 | 12 | 23 | 23.6 | 43.5 | 18.5 | 25.6 | 17.7 | 22 |
| | 1/4 | KRY08-02SW2 | 14 | | | | 28 | 45.5 | | | | 36 |
| | 3/8 | KRY08-03SW2 | 17 | | | | 29.4 | 47 | | | | 31 |
| 10 | 1/8 | KRY10-01SW2 | 17 | 18.5 | 17 | 26.5 | 26.1 | 49.5 | 21 | 40.0 | 28.4 | 29 |
| | 1/4 | KRY10-02SW2 | | | | | 29.5 | 50.5 | | | | 39 |
| | 3/8 | KRY10-03SW2 | | | | | 30.9 | 52 | | | | 31 |
| 12 | 1/4 | KRY12-02SW2 | 22 | 20.9 | 17 | 28.5 | 35.1 | 54.5 | 22 | 57.4 | 45.4 | 41 |
| | 3/8 | KRY12-03SW2 | 17 | | | | 30.5 | 53.5 | | | | 48 |
| | 1/2 | KRY12-04SW2 | 22 | | | | 36.1 | 57.5 | | | | 61 |

* Reference dimensions after R thread installation.

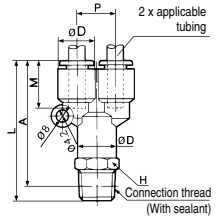


Branch: KRU-W2



| Applicable tubing O.D. (mm) | Connection thread R | Model | H (width across flats) | øD | L | P | A * | M | Effective area (mm ²) | | Weight (g) |
|-----------------------------|---------------------|-------------|------------------------|------|------|------|------|------|-----------------------------------|---------------|------------|
| | | | | | | | | | FR double layer | FR soft nylon | |
| 6 | 1/8 | KRU06-01SW2 | 13 | 12.8 | 44.6 | 12.8 | 41.5 | 17 | 10.4 | 4.2 | 12 |
| | 1/4 | KRU06-02SW2 | 14 | | 48.5 | | 43 | | | | 22 |
| | 3/8 | KRU06-03SW2 | 17 | | 49.9 | | 44.5 | | | | 35 |
| 8 | 1/8 | KRU08-01SW2 | 17 | 15.2 | 51.6 | 15.2 | 48.5 | 18.5 | 25.6 | 17.7 | 16 |
| | 1/4 | KRU08-02SW2 | | | 55 | | 50 | | | | 24 |
| | 3/8 | KRU08-03SW2 | | | 55.4 | | 50 | | | | 36 |
| 10 | 1/4 | KRU10-02SW2 | 19 | 18.5 | 60.5 | 18.5 | 55 | 21 | 40 | 28.4 | 30 |
| | 3/8 | KRU10-03SW2 | 60.9 | | 55.5 | | 40 | | | | |
| | 1/2 | KRU10-04SW2 | 64.1 | | 57 | | 65 | | | | |
| 12 | 1/4 | KRU12-02SW2 | 22 | 20.9 | 64 | 20.9 | 58.5 | 22 | 57.4 | 45.4 | 40 |
| | 3/8 | KRU12-03SW2 | 64.4 | | 59 | | 41 | | | | |
| | 1/2 | KRU12-04SW2 | 67.6 | | 60.5 | | 65 | | | | |

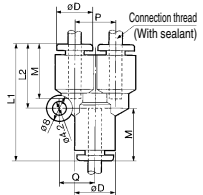
* Reference dimensions after R thread installation.



Union "Y": KRU-W2



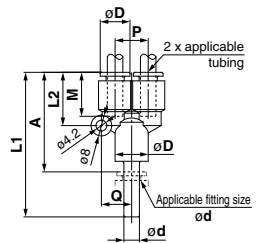
| Applicable tubing O.D. (mm) | Model | øD | L1 | L2 | P | Q | M | Effective area (mm ²) | | Weight (g) |
|-----------------------------|------------|------|------|------|------|------|------|-----------------------------------|---------------|------------|
| | | | | | | | | FR double layer | FR soft nylon | |
| 6 | KRU06-00W2 | 12.8 | 37 | 20 | 12.8 | 11.7 | 17 | 10.4 | 4.2 | 10 |
| 8 | KRU08-00W2 | 15.2 | 42.5 | 24.5 | 15.2 | 13.7 | 18.5 | 25.6 | 17.7 | 12 |
| 10 | KRU10-00W2 | 18.5 | 48 | 27.5 | 18.5 | 16.1 | 21 | 40 | 28.4 | 16 |
| 12 | KRU12-00W2 | 20.9 | 51 | 30 | 20.9 | 18.1 | 22 | 57.4 | 45.4 | 23 |



Plug-in "Y": KRU-W2



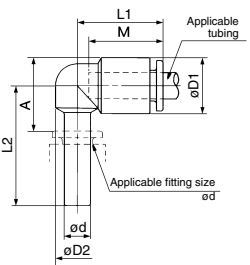
| Applicable tubing O.D. (mm) | Applicable fitting size ød | Model | øD | L1 | L2 | P | Q | A | M | Effective area (mm ²) | | Weight (g) |
|-----------------------------|----------------------------|------------|------|------|------|------|------|------|------|-----------------------------------|---------------|------------|
| | | | | | | | | | | FR double layer | FR soft nylon | |
| 6 | 6 | KRU06-99W2 | 12.8 | 55.5 | 20 | 12.8 | 11.7 | 38.5 | 17 | 10.4 | 4.2 | 8 |
| 8 | 8 | KRU08-99W2 | 15.2 | 64.5 | 24.5 | 15.2 | 13.7 | 46 | 18.5 | 25.6 | 17.7 | 12 |
| 10 | 10 | KRU10-99W2 | 18.5 | 71.5 | 27.5 | 18.5 | 16.1 | 50.5 | 21 | 40 | 28.4 | 18 |
| 12 | 12 | KRU12-99W2 | 20.9 | 75.5 | 30 | 20.9 | 18.1 | 53.5 | 22 | 57.4 | 45.4 | 24 |



Plug-in Elbow: KRL-W2



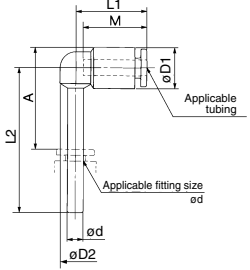
| Applicable tubing O.D. (mm) | Applicable fitting size ϕd | Model | $\phi D1$ | $\phi D2$ | L1 | L2 | A | M | Effective area (mm ²) | | Weight (g) |
|-----------------------------|----------------------------------|------------|-----------|-----------|------|------|------|------|-----------------------------------|---------------|------------|
| | | | | | | | | | FR double layer | FR soft nylon | |
| 6 | 6 | KRL06-99W2 | 12.8 | 10 | 20 | 27.5 | 17 | 17 | 9.0 | 4.2 | 3 |
| 8 | 8 | KRL08-99W2 | 15.2 | 12 | 22.5 | 31.5 | 21 | 18.5 | 21.6 | 14.9 | 5 |
| 10 | 10 | KRL10-99W2 | 18.5 | 14 | 25.5 | 35.5 | 23.5 | 21 | 35.2 | 25.0 | 9 |
| 12 | 12 | KRL12-99W2 | 20.9 | 16 | 27 | 37.5 | 26 | 22 | 50.2 | 39.7 | 10 |



Extended Plug-in Elbow: KRW-W2



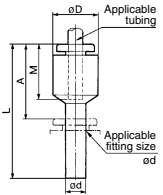
| Applicable tubing O.D. (mm) | Applicable fitting size ϕd | Model | $\phi D1$ | $\phi D2$ | L1 | L2 | A | M | Effective area (mm ²) | | Weight (g) |
|-----------------------------|----------------------------------|------------|-----------|-----------|------|------|------|------|-----------------------------------|---------------|------------|
| | | | | | | | | | FR double layer | FR soft nylon | |
| 6 | 6 | KRW06-99W2 | 12.8 | 10 | 20 | 41.5 | 31 | 17 | 9.0 | 4.2 | 4 |
| 8 | 8 | KRW08-99W2 | 15.2 | 12 | 22.5 | 48 | 37 | 18.5 | 21.6 | 14.9 | 6 |
| 10 | 10 | KRW10-99W2 | 18.5 | 14 | 25.5 | 55 | 43.5 | 21 | 35.2 | 25.0 | 9 |
| 12 | 12 | KRW12-99W2 | 20.9 | 16 | 27 | 59.5 | 48 | 22 | 50.2 | 39.7 | 13 |



Plug-in Reducer: KRR-W2



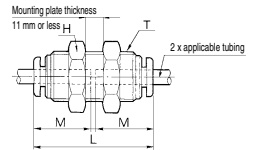
| Applicable tubing O.D. (mm) | Applicable fitting size ϕd | Model | $\phi D1$ | L | A | M | Effective area (mm ²) | | Weight (g) | |
|-----------------------------|----------------------------------|------------|-----------|------|------|------|-----------------------------------|---------------|-----------------|---------------|
| | | | | | | | FR double layer | FR soft nylon | FR double layer | FR soft nylon |
| 6 | 8 | KRR06-08W2 | 12.8 | 37 | 18.5 | 17 | 10.4 | 5.6 | 2.5 | |
| | 10 | KRR06-10W2 | | 39.5 | | | | | 9.3 | |
| 8 | 10 | KRR08-10W2 | 15.2 | 41 | 20 | 18.5 | 26.1 | 18.0 | 4.0 | |
| | 12 | KRR08-12W2 | | 42 | | | | | 4.6 | |
| 10 | 12 | KRR10-12W2 | 18.5 | 44.5 | 23 | 21 | 41.5 | 32.8 | 33 | |



Bulkhead Union: KRE-W2



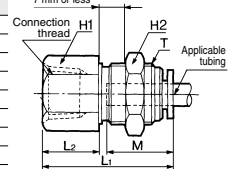
| Applicable tubing O.D. (mm) | Model | T (M) | H (width across flats) | L | Mounting hole | M | Effective area (mm ²) | | Weight (g) |
|-----------------------------|------------|---------|------------------------|------|---------------|------|-----------------------------------|---------------|------------|
| | | | | | | | FR double layer | FR soft nylon | |
| 6 | KRE06-00W2 | M14 x 1 | 17 | 34.5 | 15 | 17 | 10.4 | 5.6 | 33 |
| 8 | KRE08-00W2 | M16 x 1 | 19 | 38 | 17 | 18.5 | 26.1 | 18.0 | 52 |
| 10 | KRE10-00W2 | M20 x 1 | 24 | 42.5 | 21 | 21 | 41.5 | 29.5 | 70 |
| 12 | KRE12-00W2 | M22 x 1 | 27 | 44 | 23 | 22 | 58.3 | 46.1 | 90 |



Bulkhead Connector: KRE-W2



| Applicable tubing O.D. (mm) | Connection thread Rc | Model | T (M) | H1 (width across flats) | H2 (width across flats) | L1 | L2 | Mounting hole | M | Effective area (mm ²) | | Weight (g) |
|-----------------------------|----------------------|------------|---------|-------------------------|-------------------------|------|------|---------------|------|-----------------------------------|---------------|------------|
| | | | | | | | | | | FR double layer | FR soft nylon | |
| 6 | 1/8 | KRE06-01W2 | M14 x 1 | 17 | 17 | 28 | 11 | 15 | 17 | 10.4 | 5.6 | 25 |
| | 1/4 | KRE06-02W2 | | | | 31.5 | 15 | | | | | |
| | 3/8 | KRE06-03W2 | | | | 33.5 | 17 | | | | | |
| 8 | 1/8 | KRE08-01W2 | M16 x 1 | 17 | 17 | 27.5 | 7.5 | 17 | 18.5 | 26.1 | 18.0 | 27 |
| | 1/4 | KRE08-02W2 | | | | 33 | 13 | | | | | |
| | 3/8 | KRE08-03W2 | | | | 35 | 15 | | | | | |
| 10 | 1/4 | KRE10-02W2 | M20 x 1 | 22 | 24 | 34.5 | 12.5 | 21 | 21 | 41.5 | 29.5 | 53 |
| | 3/8 | KRE10-03W2 | | | | 36.5 | 15 | | | | | |
| | 1/2 | KRE10-04W2 | | | | 37 | 14 | | | | | |
| 12 | 3/8 | KRE12-03W2 | M22 x 1 | 24 | 27 | 37 | 14 | 23 | 22 | 58.3 | 46.1 | 92 |
| | 1/2 | KRE12-04W2 | | | | 41 | 18 | | | | | |



- KQ2
- KQB2
- KS
- KX
- KM
- KF
- M
- H/DL
- L/LL
- KC
- KK
- KK130
- DM
- KDM
- KB
- KR
- KA
- KQG2
- KG
- KFG2
- MS
- KKA
- KP
- LQ
- MQR
- T
- IDK

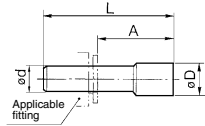
KR-W2 Series

Plug: KRP



| Applicable fitting size ϕD | Model | ϕD | L | A | Weight (g) |
|----------------------------------|--------|----------|------|------|------------|
| 6 | KRP-06 | 8 | 35 | 18 | 1 |
| 8 | KRP-08 | 10 | 39 | 20.5 | 2 |
| 10 | KRP-10 | 12 | 43 | 22 | 3.5 |
| 12 | KRP-12 | 14 | 45.5 | 24 | 5 |

* Color: Green



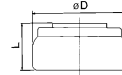
Spatter Cover 1: KR (Applicable tube: FR soft nylon)



| Applicable fitting size | Model | ϕD | L | Weight (g) |
|-------------------------|--------|----------|------|------------|
| 6 | KR-06C | 15.5 | 9 | 0.9 |
| 8 | KR-08C | 17 | 9 | 1.0 |
| 10 | KR-10C | 20.8 | 10.5 | 1.5 |
| 12 | KR-12C | 22.8 | 10.5 | 1.6 |

* When tube insert parts are in line as KQU Union "Y", use KR-□□C1.

* Color: Gray

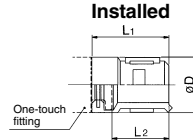


Spatter Cover 2: KR (Applicable tube: FR soft nylon, FR double layer)

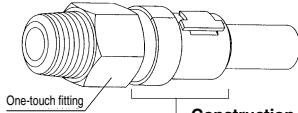


| Applicable fitting size | Model | L ₁ | L ₂ | ϕD |
|-------------------------|---------|----------------|----------------|----------|
| 6 | KR-06C1 | 18 | 13.7 | 12.8 |
| 8 | KR-08C1 | 20 | 15.7 | 15 |
| 10 | KR-10C1 | 22 | 17.2 | 18 |
| 12 | KR-12C1 | 22 | 17.2 | 20 |

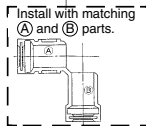
* Color: Gray



How to install



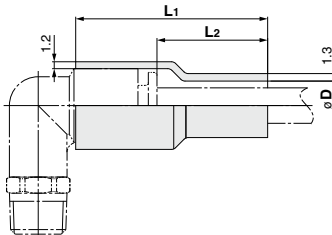
Construction of spatter cover



Related Equipment

Flame Resistant (Equivalent to UL-94 Standard V-0) Spatter Cover

(Applicable tubing: FR double layer/TRB, TRBU FR three layer/TRTU)



| Model | Applicable tubing O.D. | ϕD | L ₁ | L ₂ | (mm) |
|--------------|------------------------|----------|----------------|----------------|------|
| KR-06C-X1807 | 6 | 8.5 | 33.3 | 19.2 | |
| KR-08C-X1807 | 8 | 10.5 | 34.5 | 19.3 | |
| KR-10C-X1807 | 10 | 12.5 | 37.2 | 20.2 | |
| KR-12C-X1807 | 12 | 14.5 | 37.9 | 20.2 | |

Note 1) This product cannot be used with fittings such as KRU (union "Y") that have tube insertion parts close to each other.

For KRH (male connector) and KRE (bulkhead union) fittings, this product can only protect the release button and resin component parts.

Note 2) Sales unit: 10 pcs.