

ATEX Compliant Electro-Pneumatic Positioner (Lever type/Rotary type)

Series IP6000-X14/6100-X14



CE II 2G Ex ib IIC T5/T6

How to Order

IP6 **000** - 0 **1** 0 - - X14

Positioner type

000	Lever type
100	Rotary type

Pressure gauge (SUP, OUT1)

1	0.2 MPa
2	0.3 MPa
3	1.0 MPa

• ATEX category 2

Accessories Note)

	Without accessory (standard)	With standard lever (10 to 85 mm stroke) for IP6000
A	With ϕ 0.7 output restrictor integrated pilot valve	Common to IP6000 and 6100 small capacity actuators
B	With ϕ 1.0 output restrictor integrated pilot valve	
C	With fork lever type fitting MX	Only for IP6100
D	With fork lever type fitting SX	
E	With lever unit for a 35 to 100 mm stroke	Only for IP6000
F	With lever unit for a 50 to 140 mm stroke	
G	With compensation spring (A)	Common to IP6000 and 6100

Note) If multiple accessories are required, they should be indicated in alphabetical order.

ex. IP6000-011-AG-X14

Specifications

Item	Type	IP6000		IP6100	
		Lever type lever		Rotary type cam	
		Single acting	Double acting	Single acting	Double acting
Input current	4 to 20 mADC (Standard) <small>Note 1)</small>				
Input resistance	235 \pm 15 Ω (4 to 20 mADC)				
Supply air pressure	0.14 to 0.7 MPa				
Standard stroke	10 to 85 mm <small>(External lever allowable runout angle 10° to 30°)</small>		60° to 100° <small>Note 2)</small>		
Sensitivity	Within 0.1% F.S.		Within 0.5% F.S.		
Linearity	Within \pm 1% F.S.		Within \pm 2% F.S.		
Hysteresis	Within 0.75% F.S.		Within 1% F.S.		
Repeatability	Within \pm 0.5% F.S.				
Thermal coefficient	Within 0.1% F.S./°C				
Output flow rate	<small>Note 3)</small> 80 L/min (ANR) or more (SUP = 0.14 MPa)				
Air consumption	<small>Note 3)</small> Within 5 L/min (ANR) (SUP = 0.14 MPa)				
Ambient and using fluid Temperature	-20°C to 80°C (T5) -20°C to 60°C (T6)				
Explosion protected Construction	ATEX intrinsically safe explosion proof structure (0344 II 2G Ex ib II C T5/T6) Approval No. KEMA 03 ATEX1119				
Air connection port	1/4 NPT female screw				
Electric wiring connection port	M20 x 1.5				
Material	Aluminium diecast for the body				
Weight	Approx. 2.4 kg				
Classification of degree of protection	JIS F8007 IP55 (Conform to IEC 60529)				
Parameters (Current circuit)	Ui \leq 28V, Ii \leq 125mA, Pi \leq 1.2W, Ci \leq OnF, Li \leq OmH				

All other specifications are the same as the standard products Series IP6000/6100.
For details, refer to the **WEB catalog** or Series IP6000/6100 (CAT.ES60-11).

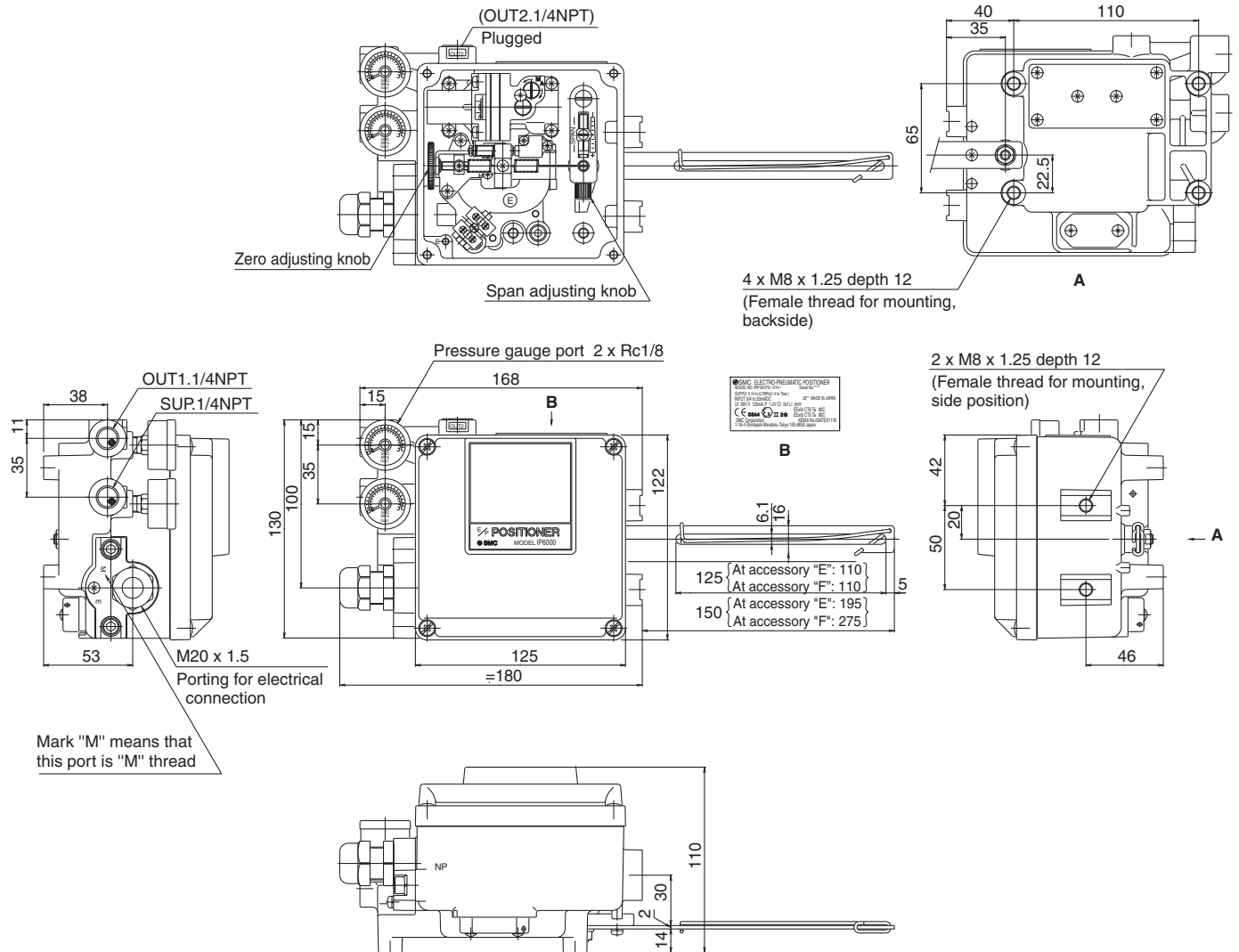
Note 1) 1/2 split range is possible with the standard type (by adjusting the span).

Note 2) The stroke is adjustable in 0° to 60° and 0° to 100°.

Note 3) Standard air (JIS B0120): temp. 20°C, absolute press. 760 mmHg, ratio humidity 65%.

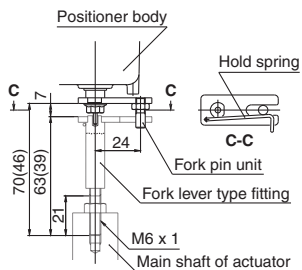
Dimensions/IP6000

IP6000-0□0-□-X14 (Lever type)



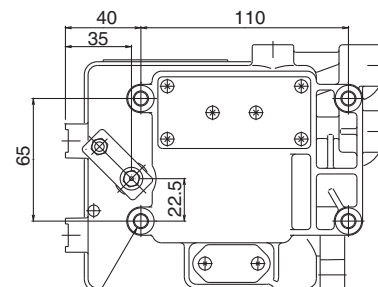
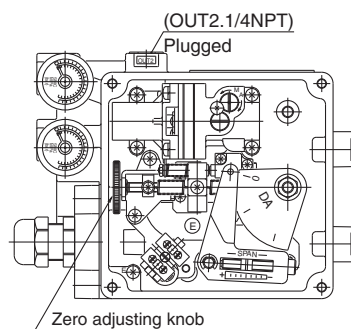
Dimensions/IP6100

IP6100-0□0-□-X14 (Rotary type)

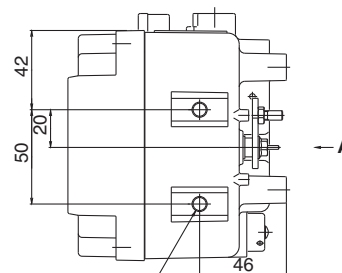
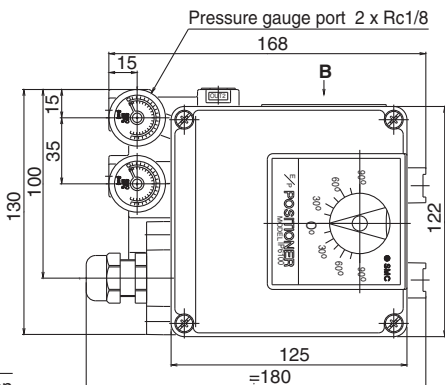
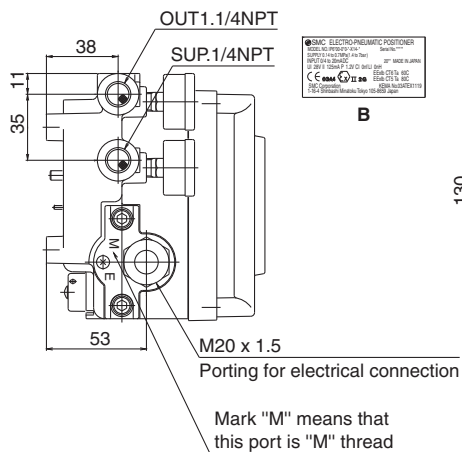


Dimension of optional fork lever assembly type "MX"

() Shows dimension of fork lever assembly type "SX"



A
 4 x M8 x 1.25 depth 12
 (Female thread for mounting, backside)



A
 2 x M8 x 1.25 depth 12
 (Female thread for mounting, side position)

