

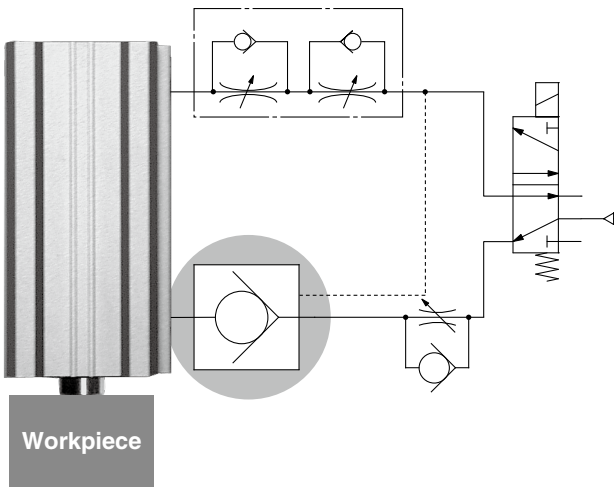
# Pilot Check Valve: Metal Body Type

■ The use of a metal body improves strength and environmental resistance.

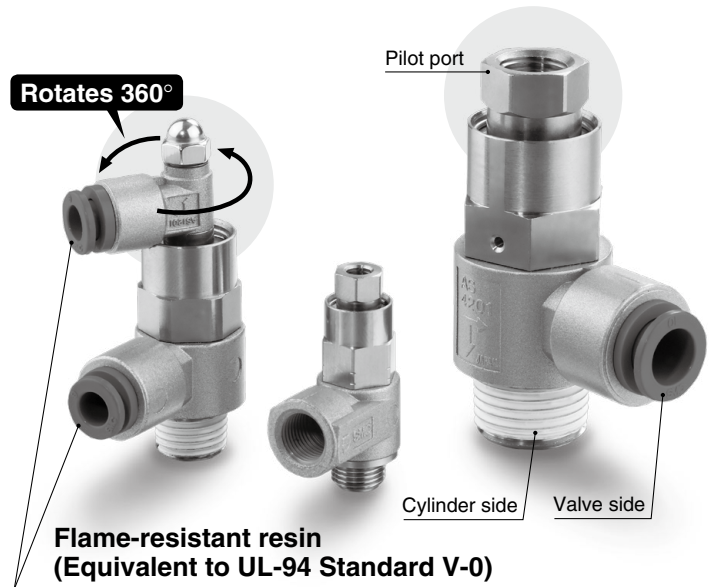
■ Temporary intermediate stops are possible.\*1

\*1 Precise intermediate stops are not guaranteed.

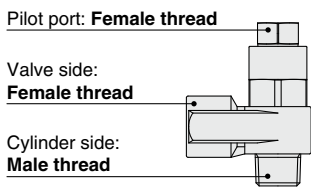
Example of a drop prevention circuit



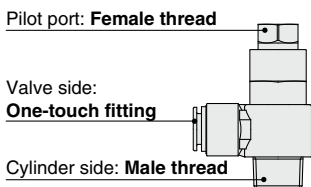
■ Three types capable of connecting to female threads and One-touch fittings are available.



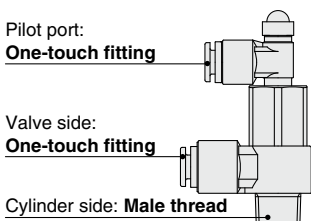
## Model



Model	Port size on the cylinder side		Pilot port		Port size on the valve side			
					Female thread (Rc, G)			
					1/8	1/4	3/8	1/2
AS2200-□01□-X785	R, G	1/8	M5	Rc, G	●	—	—	—
AS2200-□02□-X785		1/4			—	●	—	—
AS3200-□03□-X785		3/8	1/8		—	—	●	—
AS4200-□04□-X785		1/2	1/4		—	—	—	●



Model	Port size on the cylinder side		Pilot port		Port size on the valve side	
					One-touch fitting	
					ø10	ø12
AS4201-□04-F□□-X785	R, G	1/2	Rc, G	1/4	●	●



Model	Port size on the cylinder side		Pilot port		Port size on the valve side		
					One-touch fitting		
					ø6	ø8	ø10
AS2201-□01-F□□-X785	R, G	1/8	ø6	—	●	●	—
AS2201-□02-F□□-X785		1/4			●	●	●
AS3201-□03-F□□-X785		3/8			—	●	●

# AS-X785

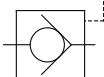


16-E672

# AS-X785

## Specifications

Symbol



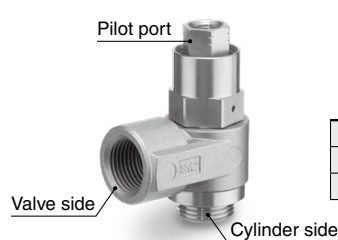
Fluid	Air
Proof pressure	1.5 MPa
Max. operating pressure	1 MPa
Min. operating pressure	0.1 MPa
Pilot check valve operating pressure	50% or more of the operating pressure (0.1 MPa or more)
Ambient and fluid temperatures	-5 to 60°C (No freezing)
Applicable tubing materials	Nylon, Soft nylon, Polyurethane

\* Use caution at the max. operating pressure when using soft nylon or polyurethane tubing. (Refer to the [Web Catalog](#) for details.)

## Flow Rate and Sonic Conductance

Model	AS2200-□01□-X785	AS2200-□02□-X785		AS3200-□03□-X785		AS4200-□04□-X785	
	AS2201-□01-F□□-X785	AS2201-□02-F□□-X785	AS2201-□02-F□□-X785	AS3201-□03-F□□-X785	AS3201-□03-F□□-X785	AS4201-□04-F□□-X785	AS4201-□04-F□□-X785
Port size on the valve side	ø6, ø8, 1/8	ø6, ø8	ø10, 1/4	ø8	ø10, 3/8	ø10	ø12, 1/2
Sonic conductance [dm <sup>3</sup> /(s·bar)]	0.8	1.3	1.4	3.1	3.2	5.1	5.8
Critical pressure ratio	0.25	0.25	0.25	0.25	0.25	0.25	0.25

## How to Order



AS 2 200 - □ 01

Body size

2	1/8, 1/4
3	3/8
4	1/2

Thread type

Nil	R, Rc
G	G

Port size

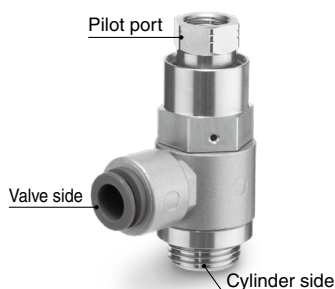
	Cylinder side
01	1/8
02	1/4
03	3/8
04	1/2

S - X785

Seal method

Nil	Without sealant (for G)
S	With sealant (for R)

\* R thread type: With sealant  
G thread type: Without sealant



AS4201 - □ 04 - F 10 S - X785

Thread type

Nil	R, Rc
G	G

Port size

	Cylinder side
04	1/2

With One-touch fitting

Seal method

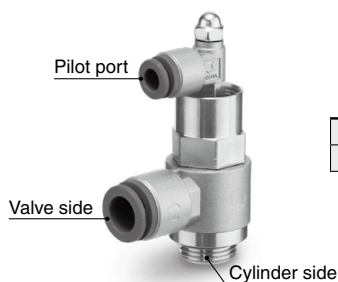
Nil	Without sealant (for G)
S	With sealant (for R)

\* R thread type: With sealant  
G thread type: Without sealant

Valve side applicable tubing O.D.\*1

10	ø10
12	ø12

\*1 For selecting applicable tubing O.D., refer to the cover page.



AS 2 201 - □ 01 - F 06 S - X785

Body size

2	1/8, 1/4
3	3/8

Thread type

Nil	R
G	G

Port size

	Cylinder side
01	1/8
02	1/4
03	3/8

With One-touch fittings

Seal method

Nil	Without sealant (for G)
S	With sealant (for R)

\* R thread type: With sealant  
G thread type: Without sealant

Valve side applicable tubing O.D.\*1

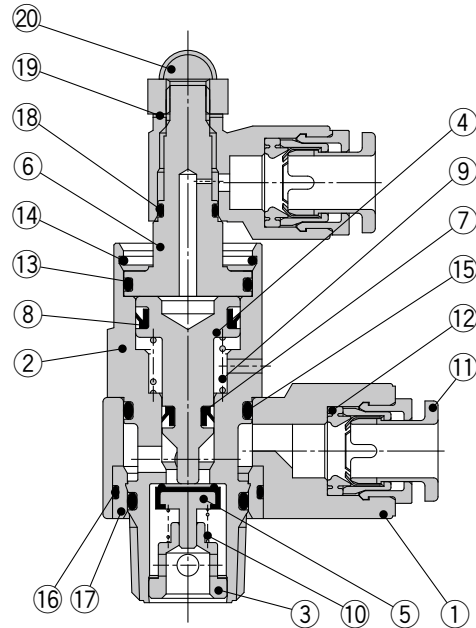
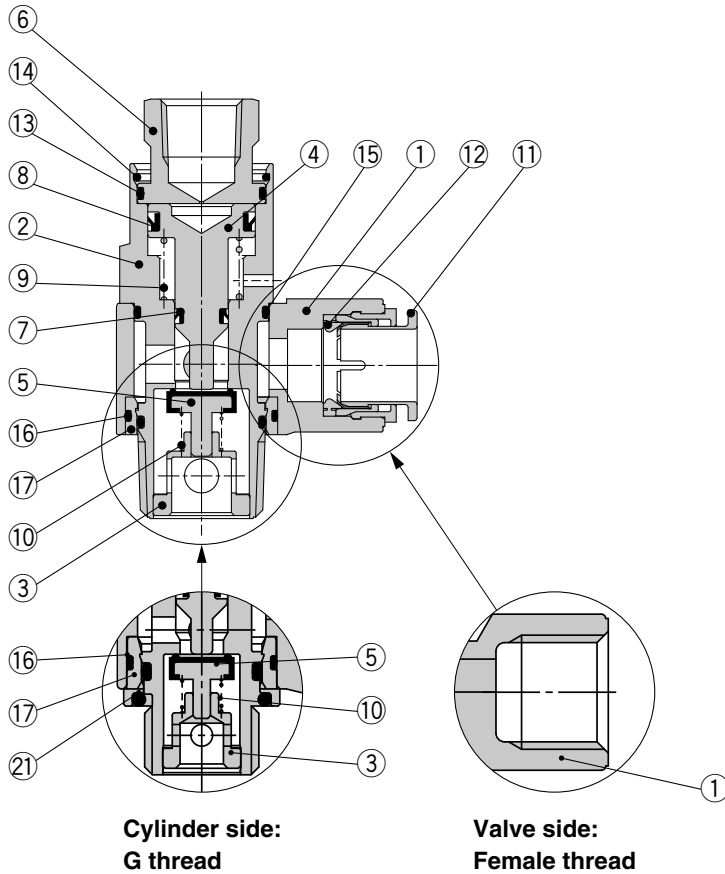
06	ø6
08	ø8
10	ø10

\*1 For selecting applicable tubing O.D., refer to the cover page.

## Construction

### Female thread (Pilot port)

### With One-touch fittings (Pilot port)



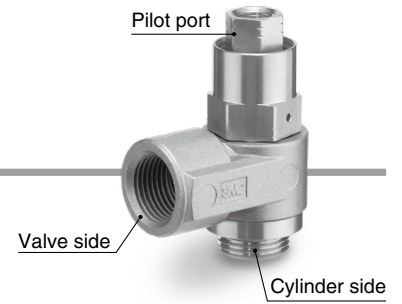
### Component Parts

No.	Description	Material	Note
1	<b>Body A</b>	ZDC	Platinum silver
2	<b>Pilot body</b>	Brass	Electroless nickel plating
3	<b>Guide</b>	Brass	Electroless nickel plating
4	<b>Piston</b>	Brass	Electroless nickel plating
5	<b>Valve</b>	Stainless steel, NBR	
6	<b>Cover</b>	Brass	Electroless nickel plating
7	<b>DY seal</b>	NBR	
8	<b>DY seal</b>	NBR	
9	<b>Spring</b>	Stainless steel	
10	<b>Spring</b>	Stainless steel	
11	<b>Cassette</b>	—	Attached to body A for the One-touch fitting type

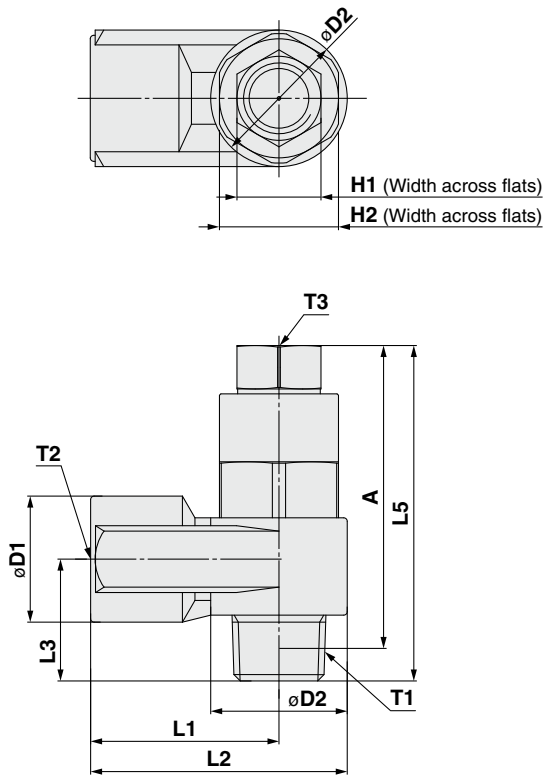
No.	Description	Material	Note
12	<b>Seal</b>	NBR	
13	<b>O-ring</b>	NBR	
14	<b>Ring</b>	Stainless steel	
15	<b>O-ring</b>	NBR	
16	<b>O-ring</b>	NBR	
17	<b>Bushing</b>	PBT/Brass	Brass (Electroless nickel plating) for G thread
18	<b>O-ring</b>	NBR	
19	<b>Gasket</b>	NBR	
20	<b>Domed cap nut</b>	Stainless steel	
21	<b>O-ring</b>	—	Only for G thread

# AS-X785

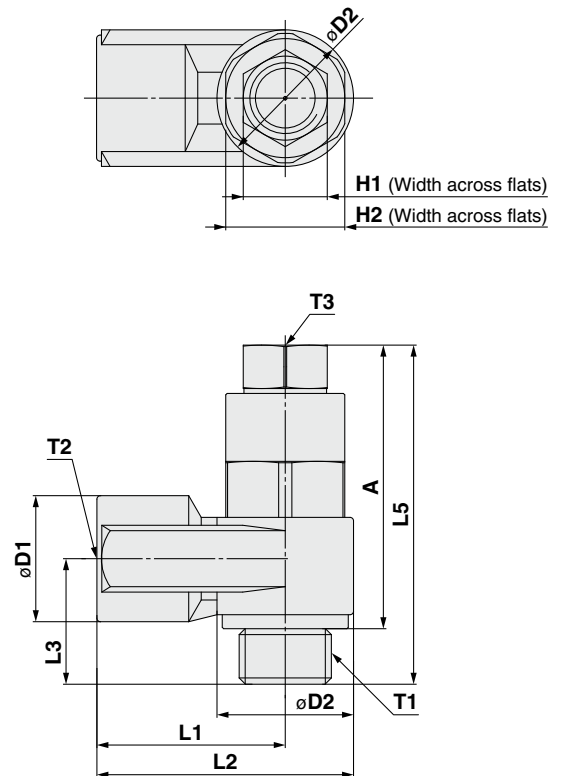
## Dimensions



### AS2200/3200/4200-□S-X785



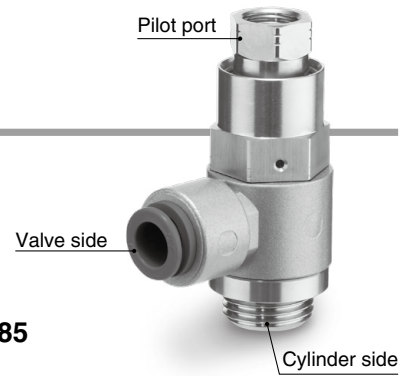
### AS2200/3200/4200-G□-X785



Model	T1	T2	T3	H1	H2	D1	D2	L1	L2	L3	L5	A	Weight [g]
AS2200-01S-X785	R1/8	Rc1/8	M5 x 0.8	8	12	14.3	14.6	18	25.3	14.7	39.7	35.7	35
AS2200-G01-X785	G1/8	G1/8	M5 x 0.8	8	12	14.3	14.6	18	25.3	14.7	39.7	33.8	40
AS2200-02S-X785	R1/4	Rc1/4	Rc1/8	12	17	18	19.5	27.2	36.95	18.4	48.9	42.9	77
AS2200-G02-X785	G1/4	G1/4	G1/8	12	17	18	19.5	27.2	36.95	18.5	50	41.5	85
AS3200-03S-X785	R3/8	Rc3/8	Rc1/8	12	19	22.5	24.3	30	42.15	21	56.5	50.2	125
AS3200-G03-X785	G3/8	G3/8	G1/8	12	19	22.5	24.3	30	42.15	23	58.5	48.4	140
AS4200-04S-X785	R1/2	Rc1/2	Rc1/4	17	24	27.5	28.5	38.5	52.75	27.1	70.7	62.5	225
AS4200-G04-X785	G1/2	G1/2	G1/4	17	24	27.5	28.5	38.5	52.75	28.7	72.3	60.1	250

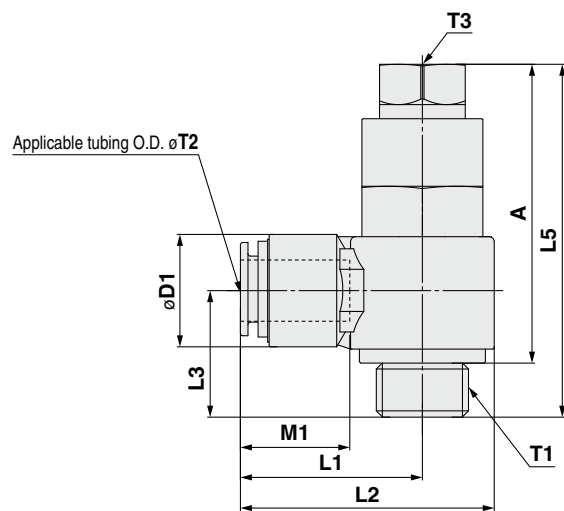
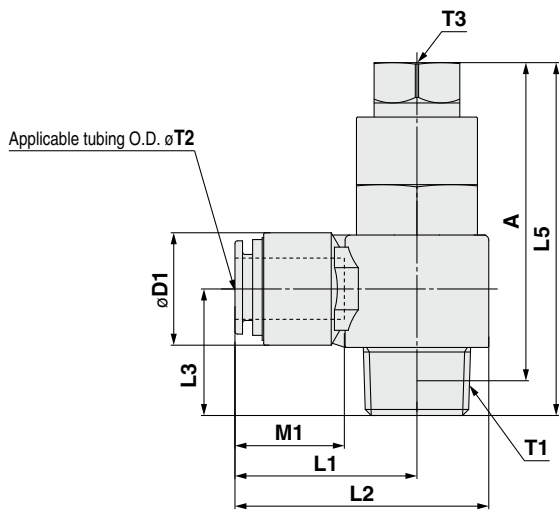
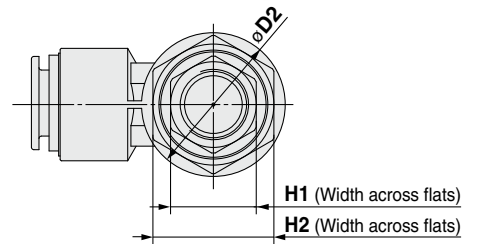
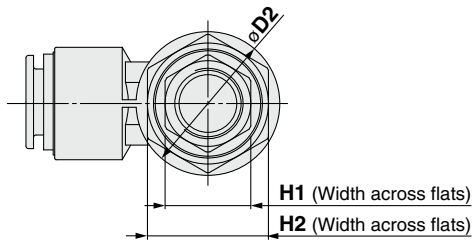
# Pilot Check Valve: Metal Body Type **AS-X785**

## Dimensions



**AS4201-04-F□S-X785**

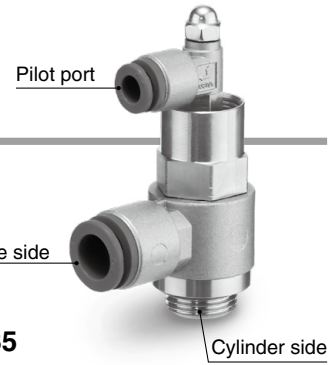
**AS4201-G04-F□-X785**



Model	T1	øT2	T3	H1	H2	D1	D2	L1	L2	L3	L5	A	M1	Weight [g]
<b>AS4201-04-F10S-X785</b>	R1/2	ø10	Rc1/4	17	24	22.3	28.5	36.1	50.4	25.9	70.7	62.5	21	190
<b>AS4201-04-F12S-X785</b>	R1/2	ø12	Rc1/4	17	24	22.3	28.5	36.1	50.4	25.9	70.7	62.5	22	183
<b>AS4201-G04-F10-X785</b>	G1/2	ø10	G1/4	17	24	22.3	28.5	36.1	50.4	27.5	72.3	60.1	21	215
<b>AS4201-G04-F12-X785</b>	G1/2	ø12	G1/4	17	24	22.3	28.5	36.1	50.4	27.5	72.3	60.1	22	208

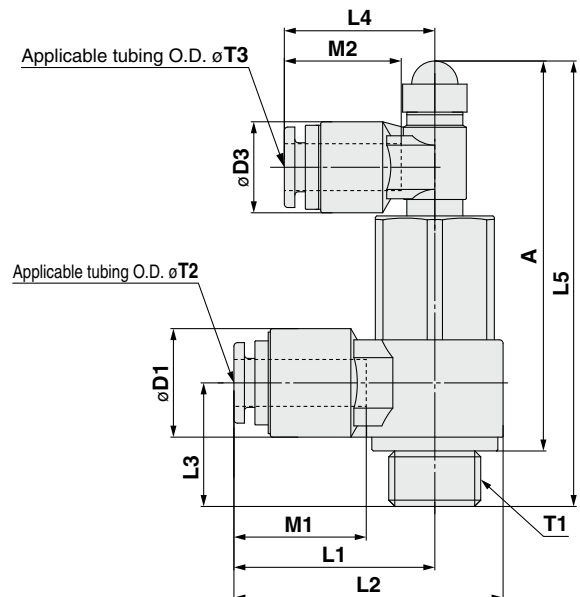
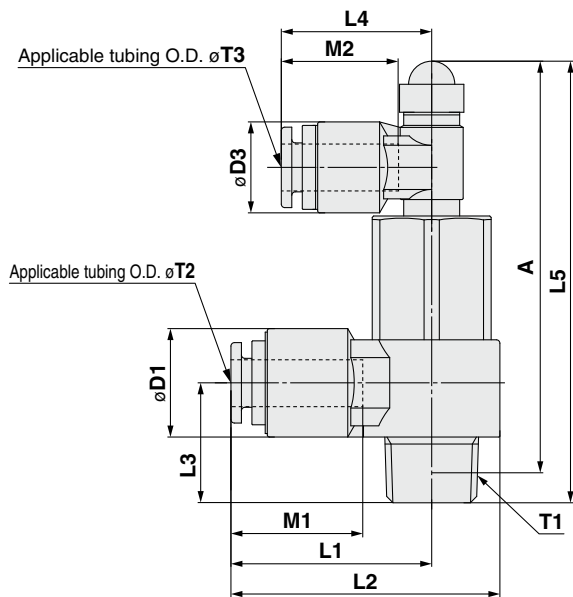
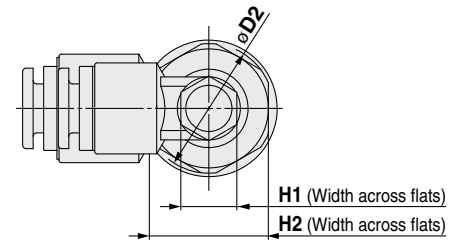
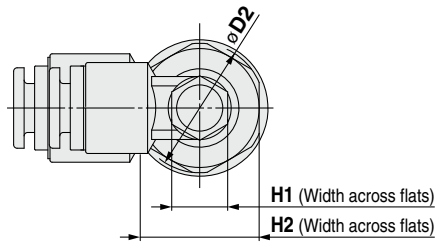
# AS-X785

## Dimensions



AS2201/3201-□-F□S-X785

AS2201/3201-G□-F□-X785



Model	T1	øT2	øT3	H1	H2	D1	D2	D3	L1	L2	L3	L4	L5	A	M1	M2	Weight [g]
AS2201-01-F06S-X785	R1/8	ø6	ø6	8	12	15.5	14.6	13	26.6	33.9	15.2	21.5	58.3	54.3	17	17	48
AS2201-01-F08S-X785	R1/8	ø8	ø6	8	12	15.5	14.6	13	26.6	33.9	15.2	21.5	58.3	54.3	18.5	17	45
AS2201-G01-F06-X785	G1/8	ø6	ø6	8	12	15.5	14.6	13	26.6	33.9	15.2	21.5	58.3	52.4	17	17	53
AS2201-G01-F08-X785	G1/8	ø8	ø6	8	12	15.5	14.6	13	26.6	33.9	15.2	21.5	58.3	52.4	18.5	17	50
AS2201-02-F06S-X785	R1/4	ø6	ø6	8	17	15.5	19.5	13	28.7	38.5	18.2	21.5	64.5	58.5	17	17	82
AS2201-02-F08S-X785	R1/4	ø8	ø6	8	17	15.5	19.5	13	28.7	38.5	18.2	21.5	64.5	58.5	18.5	17	78
AS2201-02-F10S-X785	R1/4	ø10	ø6	8	17	18.2	19.5	13	34.5	44.3	19	21.5	64.5	58.5	21	17	80
AS2201-G02-F06-X785	G1/4	ø6	ø6	8	17	15.5	19.5	13	28.7	38.5	19.3	21.5	65.6	57.1	17	17	90
AS2201-G02-F08-X785	G1/4	ø8	ø6	8	17	15.5	19.5	13	28.7	38.5	19.3	21.5	65.6	57.1	18.5	17	86
AS2201-G02-F10-X785	G1/4	ø10	ø6	8	17	18.2	19.5	13	34.5	44.3	20.1	21.5	65.6	57.1	21	17	88
AS3201-03-F08S-X785	R3/8	ø8	ø6	8	19	18	24.3	13	32.7	44.9	20.5	21.5	72.1	65.8	18.5	17	118
AS3201-03-F10S-X785	R3/8	ø10	ø6	8	19	18	24.3	13	33.3	45.5	20.5	21.5	72.1	65.8	21	17	113
AS3201-G03-F08-X785	G3/8	ø8	ø6	8	19	18	24.3	13	32.7	44.9	22.5	21.5	74.1	64	18.5	17	133
AS3201-G03-F10-X785	G3/8	ø10	ø6	8	19	18	24.3	13	33.3	44.5	22.5	21.5	74.1	64	21	17	128