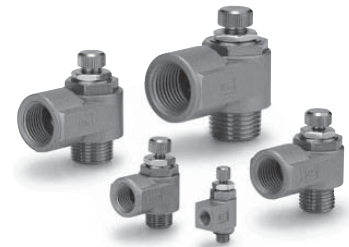


Series 10-AS

Speed Controller
Cylinder Direct Mount Type/Metal Elbow Type
10-AS1200, 2200, 3200, 4200

RoHS

How to Order



Clean series

Body size
1 — M3, M5 standard
2 — 1/8, 1/4 standard
3 — 3/8 standard
4 — 1/2 standard

Elbow

10 - AS 2 2 0 0 - 02 - S (N) -

Control Type
0 — Meter-out
1 — Meter-in

Port size
M3 — M3 x 0.5
M5 — M5 x 0.8
01 — R1/8
02 — R1/4
03 — R3/8
04 — R1/2

Option
S — With sealant

Lock nut option
Nil — Hexagon lock nut
J — Round lock nut

Nickel plated specification
Add "N" only for piping port size of R1/2.
"N" is not necessary for M3, M5, R1/8, R1/4, and R3/8.

Specifications

Model	10-AS1200-M3	10-AS1200-M5	10-AS2200-01	10-AS2200-02	10-AS3200-03	10-AS4200-04	
Port size	M3 x 0.5	M5 x 0.8	R1/8, Rc1/8	R1/4, Rc1/4	R3/8, Rc3/8	R1/2, Rc1/2	
Proof pressure	1.05 MPa	1.5 MPa					
Max. operating pressure	0.7 MPa	1 MPa					
Min. operating pressure	0.1 MPa	0.1 MPa					
Ambient and fluid temperature	-5 to 60°C (No freezing)						
Option	Round lock nut		With sealant, round lock nut, nickel plated type				
Weight (g)	3	10	29	64	106	181	
Grease	Fluorine grease						
Cleanliness class (ISO class)	Class 3						
Controlled flow	Flow rate L/min (ANR)	20	105	230	460	920	1700
Free flow	Sonic conductance dm³/(s·bar)	0.06	0.32	0.7	1.4	2.8	5.2
Critical pressure ratio	Controlled flow	0.2	0.2	0.25	0.3	0.25	0.25
	Free flow	0.4	0.4	0.2	0.3	0.2	0.3

Note 1) Supply pressure: 0.5 MPa, Temperature: 20°C.

Note 2) A meter-in type is not available with AS1200-M3.

Note 3) Visual distinction between meter-out and meter-in types

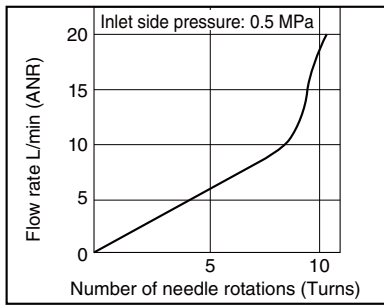
The meter-out and meter-in types can be visually determined by the lock nut.

The hexagon lock nut on the meter-out type is zinc chromated, while the meter-in type is black zinc chromated.

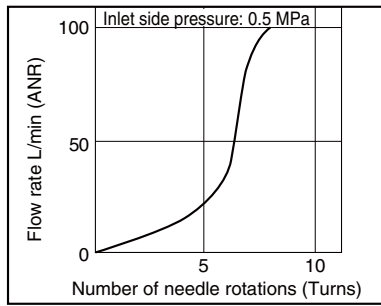
The round lock nut on the meter-out type is electroless nickel plated, while the meter-in type is black zinc chromated.

Needle Valve / Flow Rate Characteristics

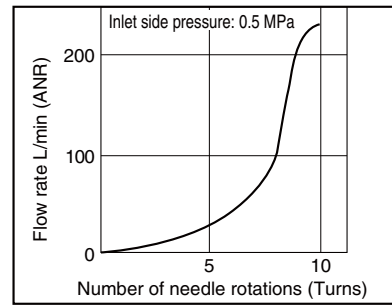
10-AS1200-M3



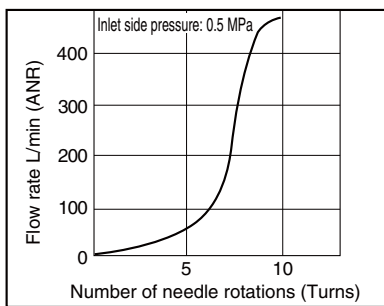
10-AS12□0-M5



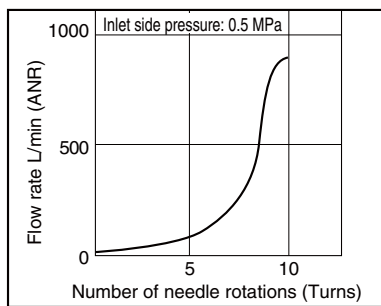
10-AS22□0-01



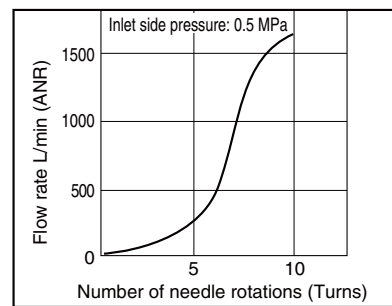
10-AS22□0-02



10-AS32□0



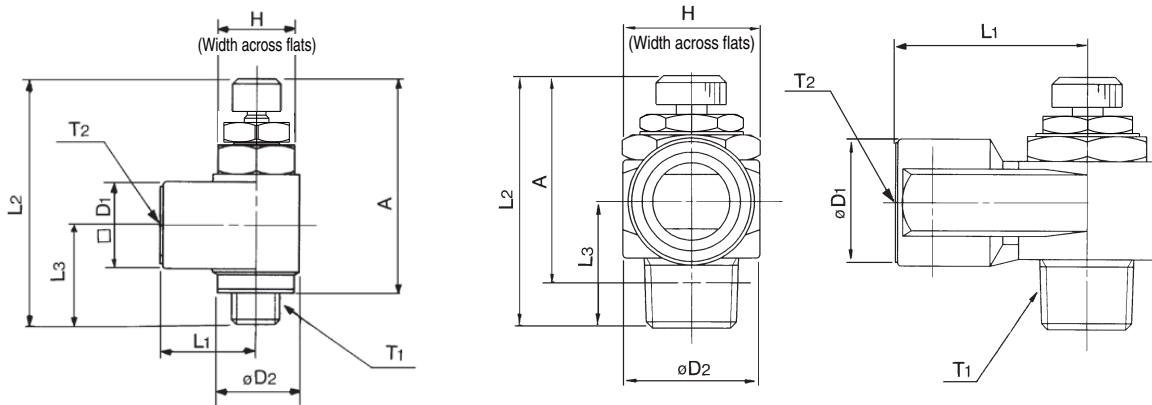
10-AS42□0



Dimensions

10-AS1200-M3
10-AS12□0-M5

10-AS22□0/32□0/42□0



Dimensions

Model	T1	T2	H	L1	L2		L3	D1	D2	A	
					MAX.	MIN.				MAX.	MIN.
10-AS1200-M3	M3 x 0.5	M3 x 0.5	4.5	6.6	23.5	21.5	8	5	5	20.5	18.5
10-AS12□0-M5	M5 x 0.8	M5 x 0.8	8	10	28.3	25.5	10.3	9	9	25	22.2
10-AS22□0-01	R1/8	Rc1/8	12	18	36.4	31.4	14.1	14.3	14.6	32.4	27.4
10-AS22□0-02	R1/4	Rc1/4	17	27.2	40.8	35.8	18	18	19.5	34.8	29.8
10-AS32□0-03	R3/8	Rc3/8	19	30	46.9	41.9	20.8	22.5	24.3	40.6	35.6
10-AS42□0-04	R1/2	Rc1/2	24	38.5	55.6	50.6	26.7	27.5	28.5	47.4	42.4