

PVC Quick Drain Valve

LVW Series



How to Order

LVW 60 - 25A - -

Series

Symbol	Body class	Orifice size
60	6	ø25
80	8	ø40
90	9	ø65
		ø80

O-ring material

Symbol	Material
Nil	FKM
N	EPDM

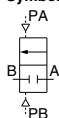
Pilot port thread type

Symbol	Thread type
Nil	Rc1/8
N	NPT1/8

Port size

Symbol	Applicable PVC piping external diameter	Body class
25A	ø32	6
32A	ø38	
40A	ø48	
50A	ø60	9
65A	ø75	
80A	ø89	

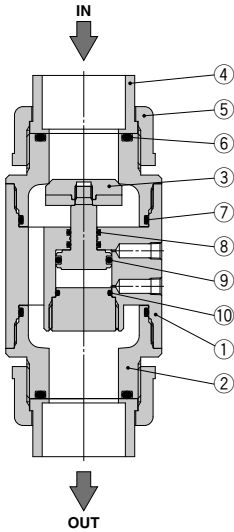
Symbol



Standard Specifications

Model		LVW60	LVW80			LVW90	
Nominal diameter		25A	32A	40A	50A	65A	80A
Applicable pipe size external diameter		ø32	ø38	ø48	ø60	ø75	ø89
Operating pressure		0 to 0.02 MPa					
Orifice size		ø25	ø40		ø65	ø80	
Pilot pressure		0.3 to 0.5 MPa					
Flow rate characteristics	Kv	8.5	18.8	43.7	71.1	131.1	169.7
	Cv	10	22	51	83	153	198
Fluid temperature		0 to 60°C					
Valve leakage		0 cm ³ /min (with water pressure)					

Construction



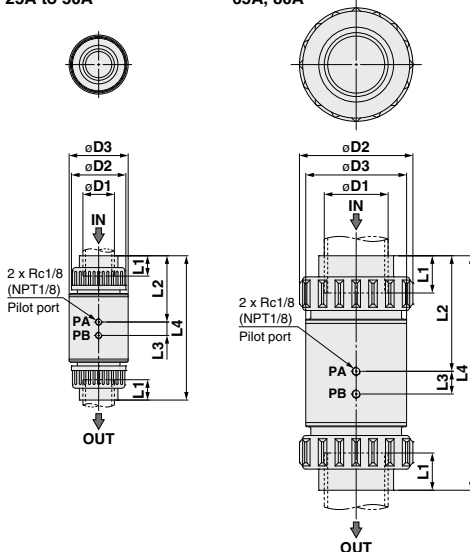
Component Parts

No.	Description	Material	Optional
1	Body	PVC	—
2	Housing	PVC	—
3	Poppet	PTFE	—
4	Union end	PVC	—
5	Union nut	PVC	—
6	O-ring	FKM	EPDM
7	O-ring	FKM	EPDM
8	O-ring	FKM	EPDM
9	O-ring	FKM	EPDM
10	O-ring	FKM	EPDM

Dimensions

Nominal diameter:
25A to 50A

Nominal diameter:
65A, 80A



Dimensions

Part no.					(mm)		
	L1	L2	L3	L4	D1	D2	D3
LVW60-25A	22	81.5	14.5	172	32	60	70
LVW80-32A	26	94	20.5	205	38	72	90
LVW80-40A	31	101	20.5	220	48	83	90
LVW90-50A	39	136.5	26	275	60	100	120
LVW90-65A	44	138.5	26	279	75	135	120
LVW90-80A	51	144.5	33	306	89	158	150



LVW Series Applicable Fluids

PVC Quick Drain Valve Material and Fluid Compatibility Check List

Chemical		Compatibility
Ammonium hydroxide	Temperature 40°C or less	<input type="radio"/> Material option "N" Note 2)
Isobutyl alcohol	Temperature 40°C or less	<input type="radio"/> Note 1), 2)
Isopropyl alcohol	Temperature 40°C or less	<input type="radio"/> Note 1), 2)
Hydrochloric acid	Concentration 30% or less	<input type="radio"/> Note 2)
Hydrogen peroxide	Concentration 5% or less, Temperature 50°C or less	<input type="radio"/>
Nitric acid (except fuming nitric acid)	Concentration 10% or less, Temperature 40°C or less	<input type="radio"/> Note 2)
Deionized water		<input type="radio"/>
Sodium hydroxide (Caustic soda)	Concentration 50% or less	<input type="radio"/>
Nitrogen gas		<input type="radio"/>
Ultrapure water		<input type="radio"/>
Sulfuric acid (except fuming sulfuric acid)	Concentration 30% or less	<input type="radio"/> Note 2)
Phosphoric acid	Concentration 50% or less	<input type="radio"/>

The material and fluid compatibility check list provides reference values as a guide only.

Note 1) Since static electricity may be generated, implement suitable countermeasures.

Note 2) Fluid may pass through. Fluid that has passed through may have an impact on components made of different materials.

Table symbol
 : Can be used
 : Can be used under certain conditions

- Compatibility is indicated for fluid temperatures of 60°C or less.
- The material and fluid compatibility check list provides reference values as a guide only, therefore we do not guarantee the application to our product.
- The data above is based on the information presented by the material manufacturers.
- SMC is not responsible for its accuracy and any damage happened because of this data.