



# Bellows Pad

Pad diameter  $\varnothing 2, \varnothing 4, \varnothing 5, \varnothing 6$

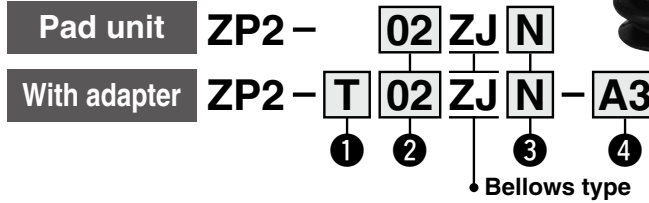
Symbol/Form

ZJ: Bellows type

Model Selection

- For use where there is no space for a buffer (spring type)
- For the adsorption of workpieces with inclined surfaces

## How to Order



### ① Vacuum inlet direction

Symbol	Vacuum inlet direction
Nil	Pad unit
T	Vertical

### ③ Pad material

Symbol	Pad material	Symbol	Pad material
N	NBR	F	FKM
S	Silicone rubber*1, *2	GN	Conductive NBR
U	Urethane rubber	GS	Conductive silicone rubber

### ④ Connection thread

Symbol	Size	Pad diameter			
		$\varnothing 2$	$\varnothing 4$	$\varnothing 5$	$\varnothing 6$
A3	M3 x 0.5 Male thread	●	●	—	—
A5	M5 x 0.8 Male thread	—	—	●	●

### ② Pad diameter

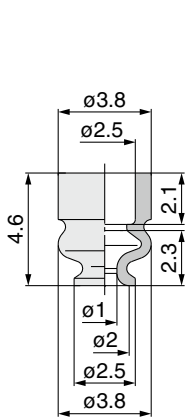
Symbol	Pad diameter
02	$\varnothing 2$
04	$\varnothing 4$
05	$\varnothing 5$
06	$\varnothing 6$

\*1 Compliant with the FDA (USA Food and Drug Administration) regulation 21CFR§177.2600 for "Rubber articles intended for repeated use"

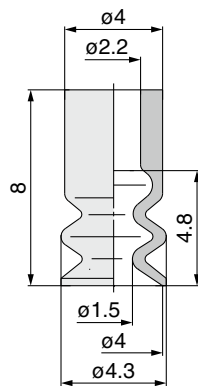
\*2 Compliant with the standards for "Rubber apparatus (excluding baby drinking apparatus) and containers/packaging" (D3) (Partial revision: Ministry of Health, Labour, and Welfare Notification No. 595, 2012) in Section 3 "Apparatus and Containers/Packaging" of the Food Sanitation Act, Article 18 "Specifications and Standards for Food and Food Additives, etc." (Ministry of Health and Welfare Notification No. 370, 1959)

## Dimensions: Pad Unit

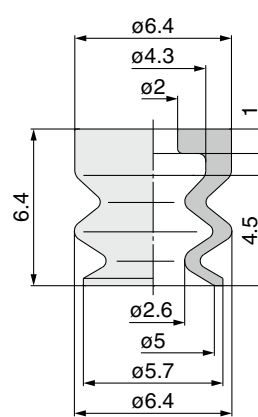
ZP2-02ZJ  $\square$  [0.1 g]



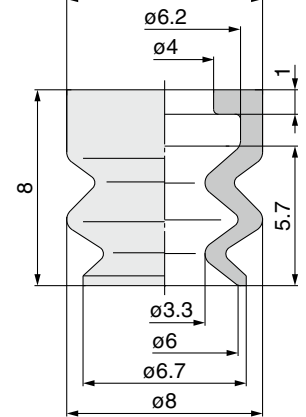
ZP2-04ZJ  $\square$  [0.1 g]



ZP2-05ZJ  $\square$  [0.2 g]



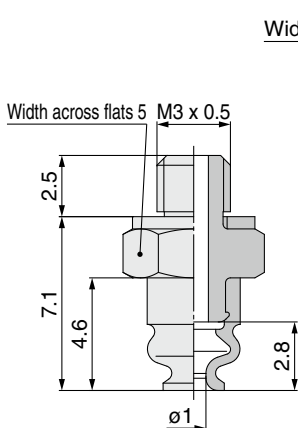
ZP2-06ZJ  $\square$  [0.3 g]



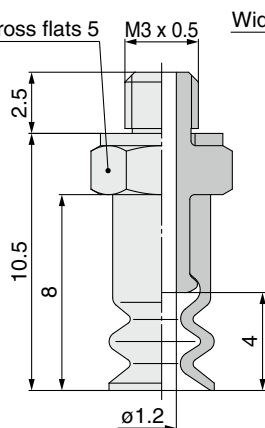
\* Due to the small diameter of the ZP2-02ZJ, the pad portion may shrink before adsorption depending on the suction flow rate. For this reason, operate with the suction flow rate set to 2 [L/min (ANR)] or lower.

## Dimensions: With Adapter

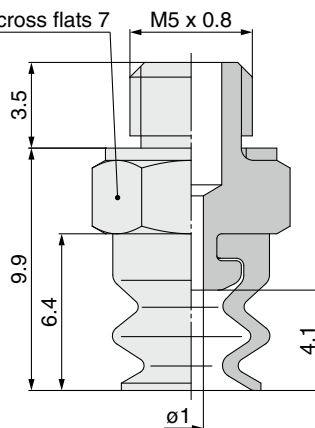
ZP2-T02ZJ  $\square$ -A3



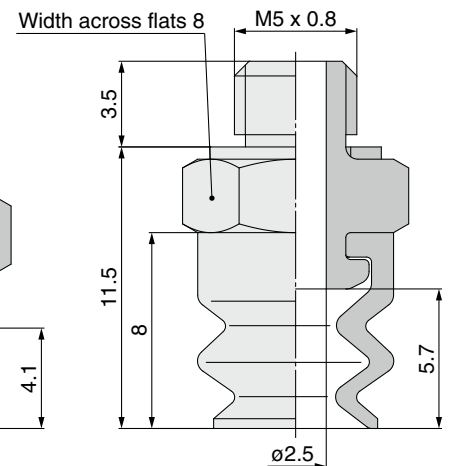
ZP2-T04ZJ  $\square$ -A3



ZP2-T05ZJ  $\square$ -A5



ZP2-T06ZJ  $\square$ -A5



Made to Order

ZP2V

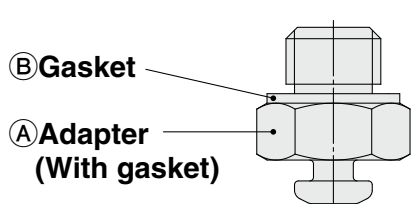
XT661

MHM

Precautions

# Bellows Pad *ZP2 Series* Mounting Bracket Assembly

## Adapter Assembly

<b>Product part no.</b>	<p>ZP2 - T ① ZJ □ - ②</p> <p>Pad diameter      Bellows type      Pad material      Connection thread (Male thread)</p>
<b>Component parts</b>	 <p>② Gasket</p> <p>① Adapter (With gasket)</p>

		Symbol	① Pad diameter symbol				
			02	04	05	06	
① Adapter	② Connection thread Male thread	M3 x 0.5	A3	ZP2A-T02ZJ-A3	ZP2A-T04ZJ-A3	—	—
		M5 x 0.8	A5	—	—	ZP2A-T05ZJ-A5	ZP2A-T06ZJ-A5
② Gasket (Single unit)	For M3 x 0.5	10 pcs.*1	M-3G2		—		
	For M5 x 0.8	10 pcs.*1	—		ZP-5G2		
		100 pcs.*1	—		M-5G2		

\*1 The gasket (single unit) sales unit is shown.