

Oval Pad *ZP/ZP2* Series Specifications

Pad Material: ZP/ZP2 Series

Material	NBR (Nitrile rubber)	Silicone rubber*1*2	Urethane rubber	FKM (Fluoro rubber)	Conductive NBR (Nitrile rubber)	Conductive silicone rubber
Color of rubber	Black	White	Brown	Black		
Rubber hardness (Shore A: ±5°)	50	40	55 to 60	60	60 to 65	50 to 60

*1 Compliant with the FDA (USA Food and Drug Administration) regulation 21CFR§177.2600 for "Rubber articles intended for repeated use"

*2 Compliant with the standards for "Rubber apparatus (excluding baby drinking apparatus) and containers/packaging" (D3) (Partial revision: Ministry of Health, Labour, and Welfare Notification No. 595, 2012) in Section 3 "Apparatus and Containers/Packaging" of the Food Sanitation Act, Article 18 "Specifications and Standards for Food and Food Additives, etc." (Ministry of Health and Welfare Notification No. 370, 1959).

Adapter Specifications: ZP Series

Vacuum Inlet Direction **Vertical** T Type/ZPT



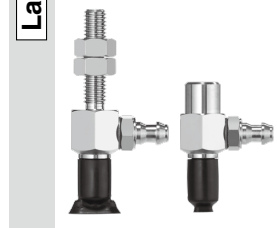
Connection	Male thread	Female thread
Pad size	2004, 3507, 4010	2004, 3507, 4010
Connection thread	M5 x 0.8 M6 x 1	M4 x 0.7 M5 x 0.8
Vacuum inlet	Use the connection thread.	

Vacuum Inlet Direction **Lateral** R Type/ZPR



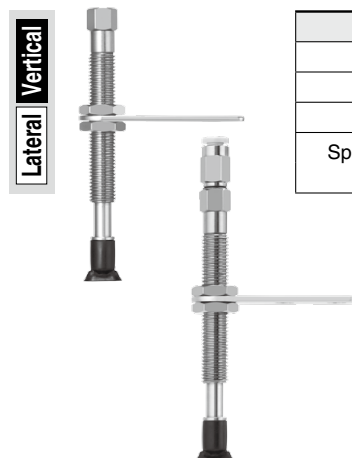
Connection	Male thread	Female thread
Pad size	2004, 3507, 4010	2004, 3507, 4010
Connection thread	M5 x 0.8 M6 x 1	M4 x 0.7 M5 x 0.8
Vacuum inlet	One-touch fitting	ø4, ø6

Vacuum Inlet Direction **Lateral** Y Type/ZPY



Connection	Male thread	Female thread
Pad size	2004, 3507, 4010	2004, 3507, 4010
Connection thread	M5 x 0.8 M6 x 1	M4 x 0.7 M5 x 0.8
Vacuum inlet	Barb fitting (Nylon tubing)	ø4, ø6
	Barb fitting (Soft tubing)	

Buffer Specifications: ZP Series



Pad size	2004, 3507, 4010	
Non-rotating specification	J: Rotating, K: Non-rotating	
Stroke [mm]	6, 10, 15, 25	
Connection thread	M8 x 1	
Spring reactive force [N]	At 0 stroke	0.8
	At full stroke	1.2

Adapter Specifications: ZP2 Series

Vertical



Vacuum Inlet Direction **Vertical** T Type/ZP2-T

Connection	Female thread
Pad size	3507 to 8030
Connection thread	M5 x 0.8
Vacuum inlet	Use the connection thread.

Lateral



Vacuum Inlet Direction **Lateral** R Type/ZP2-R

Connection	Male thread	Female thread
Pad size	3507 to 8030	3507 to 8030
Connection thread	M5 x 0.8	M5 x 0.8
Vacuum inlet	One-touch fitting	ø4, ø6

Buffer Specifications: ZP2 Series

Vertical

Lateral



Pad diameter	3507 to 8030	
Non-rotating specification	K: Non-rotating	
Stroke [mm]	10, 20, 30, 40, 50	
Connection thread	M10 x 1	
Spring reactive force [N]	At 0 stroke	1.0
	At full stroke	3.0



Oval Pad

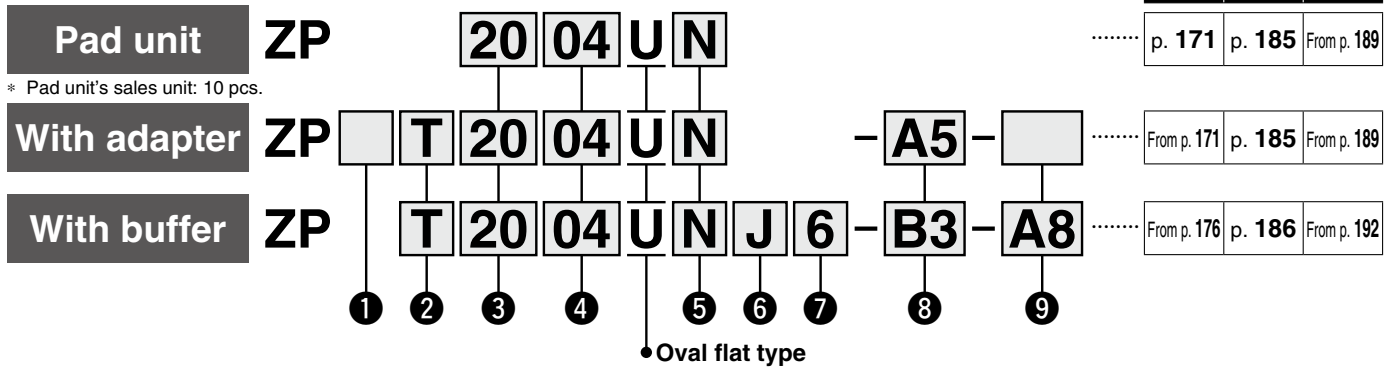
Oval Flat Type

ZP Series



Model Selection

How to Order



① Adapter material

Nil	Brass
S*	Stainless steel (Stainless steel 304)

*1 Only applicable to the pad with adapter (Vacuum inlet direction: Vertical (Option "T"))

② Vacuum inlet direction

Nil	Pad unit
T	Vertical
R	Lateral (With One-touch fitting)
Y	Lateral (With barb fitting)

③/④ Pad size

Symbol	④ Length		
	04	07	10
③ Breadth	20	● (2 x 4)	—
	35	—	● (3.5 x 7)
	40	—	● (4 x 10)

⑤ Material

N	NBR
S	Silicone rubber*1 *2
U	Urethane rubber
F	FKM
GN	Conductive NBR
GS	Conductive silicone rubber

*1 Compliant with the FDA (USA Food and Drug Administration) regulation 21CFR§177.2600 for "Rubber articles intended for repeated use"

*2 Compliant with the standards for "Rubber apparatus (excluding baby drinking apparatus) and containers/packaging" (D3) (Partial revision: Ministry of Health, Labour, and Welfare Notification No. 595, 2012) in Section 3 "Apparatus and Containers/Packaging" of the Food Sanitation Act, Article 18 "Specifications and Standards for Food and Food Additives, etc." (Ministry of Health and Welfare Notification No. 370, 1959)

⑥ Buffer specification

J	Rotating
K	Non-rotating
JN	Rotating (Without buffer plate)
KN	Non-rotating (Without buffer plate)

⑦ Buffer stroke

Stroke [mm]	Pad size
	All sizes
6	●
10	●
15	●
25	●

With adapter

⑧ Vacuum inlet

○: ZP□T/Vertical ●: ZPR/Lateral (With One-touch fitting) △: ZPY/Lateral (With barb fitting)

Type	Symbol	Size	Pad diameter
			All sizes
Male thread	A5	M5 x 0.8	○
	A6	M6 x 1	○
Female thread	B4	M4 x 0.7	○
	B5	M5 x 0.8	○
One-touch fitting	04	ø4	●
	06	ø6	●
Barb fitting	N4	For ø4 nylon tubing	△
	N6	For ø6 nylon tubing	△
	U4	For ø4 soft tubing	△
	U6	For ø6 soft tubing	△

⑨ Connection thread ●: ZPR/Lateral (With One-touch fitting) △: ZPY/Lateral (With barb fitting)

Type	Symbol	Size	Pad diameter
			All sizes
Male thread	A5	M5 x 0.8	●△
	A6	M6 x 1	●△
Female thread	B4	M4 x 0.7	●△
	B5	M5 x 0.8	●△

It is not necessary to select a connection thread for ○: ZP□T/Vertical. Use the vacuum inlet.

With buffer

⑧ Vacuum inlet

○: ZPT/Vertical ●: ZPR/Lateral (With One-touch fitting) △: ZPY/Lateral (With barb fitting)

Type	Symbol	Size	Pad diameter
			All sizes
Female thread	B3	M3 x 0.5	○
	B5	M5 x 0.8	○
One-touch fitting	04	ø4	○●
	06	ø6	○●
Barb fitting	N4	For ø4 nylon tubing*1	○△
	N6	For ø6 nylon tubing*1	△
	U4	For ø4 soft tubing*2	○△
	U6	For ø6 soft tubing*2	△

*1 Nylon tube piping

*2 Soft nylon/Polyurethane tube piping

⑨ Connection thread ●: ZPR/Lateral (With One-touch fitting) △: ZPY/Lateral (With barb fitting)

Type	Symbol	Size	Pad diameter
			All sizes
Male thread	A8	M8 x 1	○●△

* The pad, mounting nut, fitting, and buffer plate are shipped together but do not come assembled.

ZP Oval

ZP2 Oval

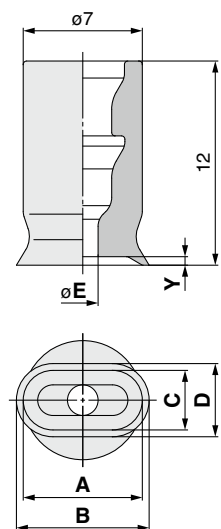
Construction

Mounting Bracket Assembly

Precautions

Dimensions/Models

Single unit **2 x 4 to 4 x 10**



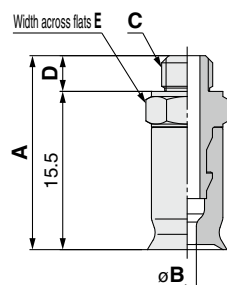
ZP **2004** **U** **N**
① ②

Model				A	B	C	D	E	Y
① Pad size	Form	② Material ^{*1}							
ZP	2004	U	N S U F GN GS	4	4.6	2	2.6	1.2	0.3
	3507			7	7.8	3.5	4.3	1.8	0.5
	4010			10	11	4	5	2	0.8

*1 N: NBR, S: Silicone rubber, U: Urethane rubber, F: FKM, GN: Conductive NBR, GS: Conductive silicone rubber

Construction p. 185
Mounting Bracket Assembly From p. 189

With adapter **2 x 4 to 4 x 10**



ZP **T** **2004** **U** **N** - **A5**
① ② ③ ④

① Adapter material

Nil	Brass
S	Stainless steel (Stainless steel 304)

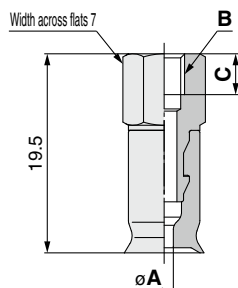
④ Vacuum inlet (Male thread)

A5	M5 x 0.8
A6	M6 x 1

Construction p. 185
Adapter Assembly p. 189

Model							A	B	C	D	E
① Adapter material	Vacuum inlet direction	② Pad size	Form	③ Material ^{*1}	④ Vacuum inlet						
ZP	Nil S	T	U	N S U F GN GS	A5	19	1.2	M5 x 0.8	3.5	7	
							1.8				
							2				
						20	1.2	M6 x 1	4.5	8	
							1.8				
							2				

*1 N: NBR, S: Silicone rubber, U: Urethane rubber, F: FKM, GN: Conductive NBR, GS: Conductive silicone rubber



ZP **T** **2004** **U** **N** - **B4**
① ② ③ ④

① Adapter material

Nil	Brass
S	Stainless steel (Stainless steel 304)

④ Vacuum inlet (Female thread)

B4	M4 x 0.7
B5	M5 x 0.8

Construction p. 185
Adapter Assembly p. 189

Model							A	B	C
① Adapter material	Vacuum inlet direction	② Pad size	Form	③ Material ^{*1}	④ Vacuum inlet				
ZP	Nil S	T	U	N S U F GN GS	B4	4	1.2	M4 x 0.7	4
							1.8		
							2		
					5	1.2	M5 x 0.8	5	
						1.8			
						2			

*1 N: NBR, S: Silicone rubber, U: Urethane rubber, F: FKM, GN: Conductive NBR, GS: Conductive silicone rubber

Dimensions/Models

With adapter/One-touch fitting 2 x 4 to 4 x 10

ZPR **2004** U **N** - **04** - **A5**

①

②

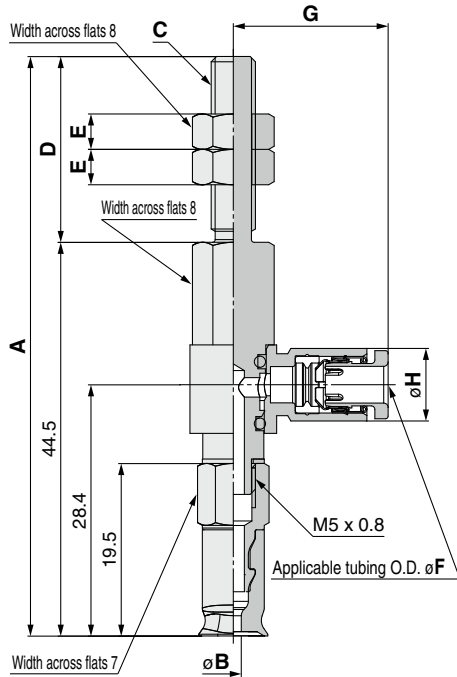
④

Connection thread (Male thread)

Vacuum inlet (One-touch fitting)

04	ø4
06	ø6

A5	M5 x 0.8
A6	M6 x 1



Construction	p. 185
Adapter Assembly	p. 190

Model						A	B	C	D	E
Vacuum inlet direction	① Pad size	Form	②*1 Material	③ Vacuum inlet	④ Connection thread					
ZP	R	U	N S U F GN GS	04 06	A5	65.5	1.2	M5 x 0.8	21	4
							1.8			
					A6	70.5	2	M6 x 1	26	4
							1.2			

Dimensions Per Vacuum Inlet

Model						F	G	H	Fitting part min. hole size
Vacuum inlet direction	① Pad size	Form	②*1 Material	③ Vacuum inlet	④ Connection thread				
ZP	R	U	N S U F GN GS	04	A5 A6	4	17.5	8.2	ø2.5
				06		6	18.3	10.4	ø4

*1 N: NBR, S: Silicone rubber, U: Urethane rubber, F: FKM, GN: Conductive NBR, GS: Conductive silicone rubber

Dimensions/Models

With adapter/One-touch fitting 2 x 4 to 4 x 10

ZPR **2004** U **N** - **04** - **B4**

①

②

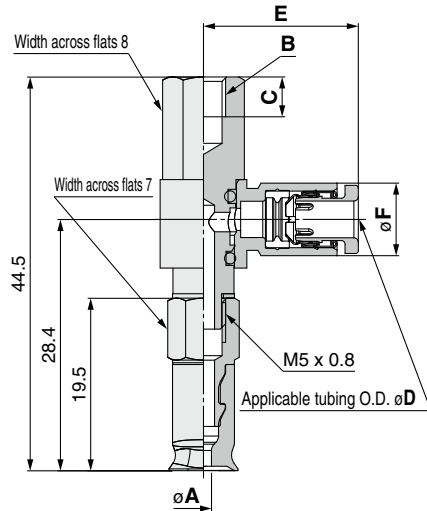
④

Connection thread
(Female thread)

Vacuum inlet
(One-touch fitting)

04	ø4
06	ø6

B4	M4 x 0.7
B5	M5 x 0.8



Construction	p. 185
Adapter Assembly	p. 190

		Model				A	B	C	
Vacuum inlet direction	① Pad size	Form	②*1 Material	③ Vacuum inlet	④ Connection thread				
ZP	R	2004	U	N S U F GN GS	04 06	B4	1.2	M4 x 0.7	4.5
		3507					1.8		
		4010					2		
		2004				B5	1.2	M5 x 0.8	5.5
		3507					1.8		
		4010					2		

Dimensions Per Vacuum Inlet

		Model				D	E	F	Fitting part min. hole size	
Vacuum inlet direction	① Pad size	Form	②*1 Material	③ Vacuum inlet	④ Connection thread					
ZP	R	2004	U	N S U F GN GS	04	B4 B5	4	17.5	8.2	ø2.5
		3507			06		6			10.4
		4010								

*1 N: NBR, S: Silicone rubber, U: Urethane rubber, F: FKM, GN: Conductive NBR, GS: Conductive silicone rubber

Dimensions/Models

With adapter/barb fitting 2 x 4 to 4 x 10

ZPY **2004** **U** **N** - **N4** - **A5**

①

②

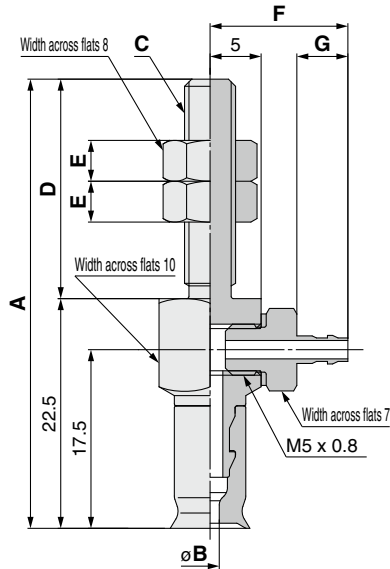
④

Connection thread
(Male thread)

Vacuum inlet ③
(Barb fitting)

A5	M5 x 0.8
A6	M6 x 1

N4	For ø4 nylon tubing	M-5AN-4
N6	For ø6 nylon tubing	M-5AN-6
U4	For ø4 soft tubing	M-5AU-4
U6	For ø6 soft tubing	M-5AU-6



Construction	p. 185
Adapter Assembly	p. 191

		Model				A	B	C	D	E	
Vacuum inlet direction	① Pad size	Form	② *1 Material	③ Vacuum inlet	④ Connection thread						
ZP	Y	2004	U	N S U F GN GS	N4 N6 U4 U6	A5	44	1.2	M5 x 0.8	21.5	4
		3507						1.8			
		2004			A6	49.5	1.2	M6 x 1	27	4	
		3507					1.8				
		4010					2				

Dimensions Per Vacuum Inlet

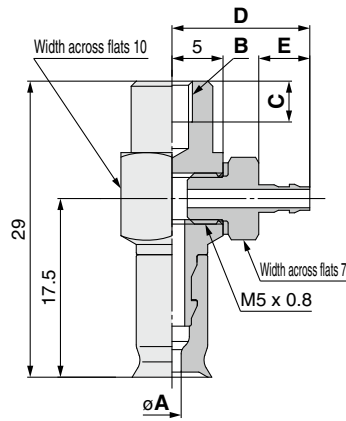
		Model				F	G	Fitting part min. hole size
Vacuum inlet direction	① Pad size	Form	② *1 Material	③ Vacuum inlet	④ Connection thread			
ZP	Y	2004	U	N S U F GN GS	N4 U4	13.5	5	ø1.8
		3507						
		4010			N6 U6	15.5	7	ø2.5

*1 N: NBR, S: Silicone rubber, U: Urethane rubber, F: FKM, GN: Conductive NBR, GS: Conductive silicone rubber

Dimensions/Models

With adapter/barb fitting 2 x 4 to 4 x 10

ZPY **2004** U **N** - **N4** - **B4**



Construction p. 185
Adapter Assembly p. 191

①
②
③ Vacuum inlet
(Barb fitting)

④ Connection thread
(Female thread)

N4	For ø4 nylon tubing	M-5AN-4
N6	For ø6 nylon tubing	M-5AN-6
U4	For ø4 soft tubing	M-5AU-4
U6	For ø6 soft tubing	M-5AU-6

B4	M4 x 0.7
B5	M5 x 0.8

	Vacuum inlet direction	Model				A	B	C	
		① Pad size	Form	② ^{*1} Material	③ Vacuum inlet				④ Connection thread
ZP	Y	2004	U	N S U F GN GS	N4 N6 U4 U6	B4	1.2	M4 x 0.7	4
		3507					1.8		
		4010					2		
		2004			B5	1.2	M5 x 0.8	5	
		3507				1.8			
		4010				2			

Dimensions Per Vacuum Inlet

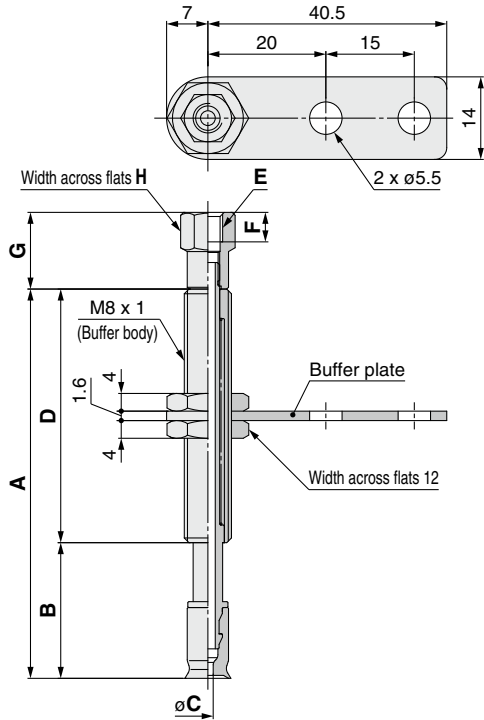
	Vacuum inlet direction	Model				D	E	Fitting part min. hole size	
		① Pad size	Form	② ^{*1} Material	③ Vacuum inlet				④ Connection thread
ZP	Y	2004 3507 4010	U	N S U F GN GS	N4 U4	B4 B5	13.5	5	ø1.8
		N6 U6			15.5		7	ø2.5	

*1 N: NBR, S: Silicone rubber, U: Urethane rubber, F: FKM, GN: Conductive NBR, GS: Conductive silicone rubber

Dimensions/Models

With buffer 2 x 4 to 4 x 10

The drawings show the type with a buffer plate.



ZPT **2004** **U** **N** **J** **6** - **B3** - **A8**

Buffer specification 3

J	Rotating
K	Non-rotating
JN	Rotating (Without buffer plate)
KN	Non-rotating (Without buffer plate)

6 Connection thread (Male thread)

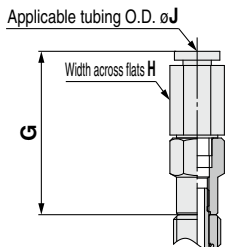
A8	M8 x 1
-----------	--------

5 Vacuum inlet

B3	M3 x 0.5	Female thread	
B5	M5 x 0.8	Female thread	
04	ø4	One-touch fitting	KQ2H04-M5N
06	ø6	One-touch fitting	KQ2H06-M5N
N4	For ø4 nylon tubing	Barb fitting	
U4	For ø4 soft tubing	Barb fitting	

		Model						A	B	C	D		
Vacuum inlet direction	1 Pad size	Form	2*1 Material	3 Buffer spec.	4 Buffer stroke	5 Vacuum inlet	6 Connection thread						
ZP	T	U	N S U F GN GS	J K JN KN	6	B3 B5 04 06 N4 U4	A8	33	18	1.2	15		
					10			66	23		43		
					15			71	28				
					25			81	38				
					6			33	18	15			
					10			66	23	43			
	T	U		U	N S U F GN GS	J K JN KN	6	B3 B5 04 06 N4 U4	A8	66	23	1.8	43
							15			71	28		
							25			81	38		
							6			33	18	15	
							10			66	23	43	
							15			71	28		
T	U	U	N S U F GN GS	J K JN KN		6	B3 B5 04 06 N4 U4	A8	71	28	2	43	
						10			81	38			
						15			33	18			
						25			66	23	43		
						6			71	28			
						10			81	38			

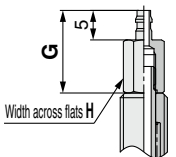
Vacuum inlet: One-touch fitting



Dimensions Per Vacuum Inlet: Female Thread

		Model						E	F	G	H
Vacuum inlet direction	1 Pad size	Form	2*1 Material	3 Buffer spec.	4 Buffer stroke	5 Vacuum inlet	6 Connection thread				
ZP	T	U	N S U F GN GS	J K JN KN	6	B3 B5	A8	M3 x 0.5	3	11	6
					10			M5 x 0.8	5	13	8
					15						
					25						

Vacuum inlet: Barb fitting



Dimensions Per Vacuum Inlet: One-touch Fitting

		Model						G	H	J	Fitting part min. hole size
Vacuum inlet direction	1 Pad size	Form	2*1 Material	3 Buffer spec.	4 Buffer stroke	5 Vacuum inlet	6 Connection thread				
ZP	T	U	N S U F GN GS	J K JN KN	6	04 06	A8	27.7	8	4	ø2.5
					10				10	6	
					15				10	6	
					25			10	6		

- Construction p. 186
- Buffer Assembly p. 192

Dimensions Per Vacuum Inlet: Barb Fitting

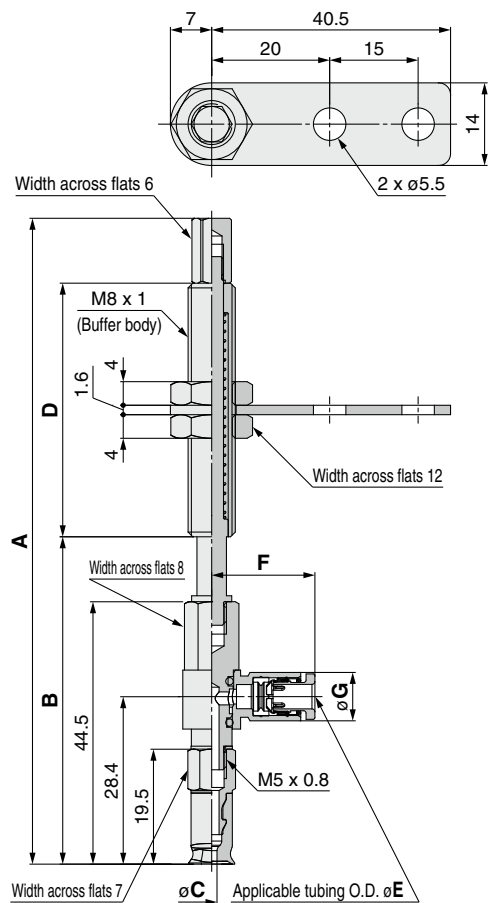
		Model						G	H	Fitting part min. hole size
Vacuum inlet direction	1 Pad size	Form	2*1 Material	3 Buffer spec.	4 Buffer stroke	5 Vacuum inlet	6 Connection thread			
ZP	T	U	N S U F GN GS	J K JN KN	6	N4 U4	A8	14	6	ø1.8
					10					
					15					
					25					

*1 N: NBR, S: Silicone rubber, U: Urethane rubber, F: FKM, GN: Conductive NBR, GS: Conductive silicone rubber

Dimensions/Models

With buffer/One-touch fitting 2 x 4 to 4 x 10

The drawings show the type with a buffer plate.



Construction p. 186
Buffer Assembly p. 193

ZPR **2004** **U** **N** **J** **6** - **04** - **A8**

1	2	3	4	5	6
Buffer specification			Connection thread (Male thread)		
J	Rotating		A8 M8 x 1		
K	Non-rotating				
JN	Rotating (Without buffer plate)		5 Vacuum inlet (One-touch fitting)		
KN	Non-rotating (Without buffer plate)				
04	ø4				
06	ø6				

	Vacuum inlet direction	Model						A	B	C	D		
		1 Pad size	Form	2 *1 Material	3 Buffer spec.	4 Buffer stroke	5 Vacuum inlet					6 Connection thread	
ZP	R	2004	U	N S U F GN GS	J K JN KN	6	04	06	A8	78.5	52.5	1.2	15
						10				109.5	55.5		43
						15				114.5	60.5		
		25			124.5	70.5							
		6			78.5	52.5				1.8	15		
		10			109.5	55.5					43		
	15	114.5	60.5										
	25	124.5	70.5										
	6	78.5	52.5		2	15							
	10	109.5	55.5			43							
	15	114.5	60.5										
	25	124.5	70.5										

Dimensions Per Vacuum Inlet

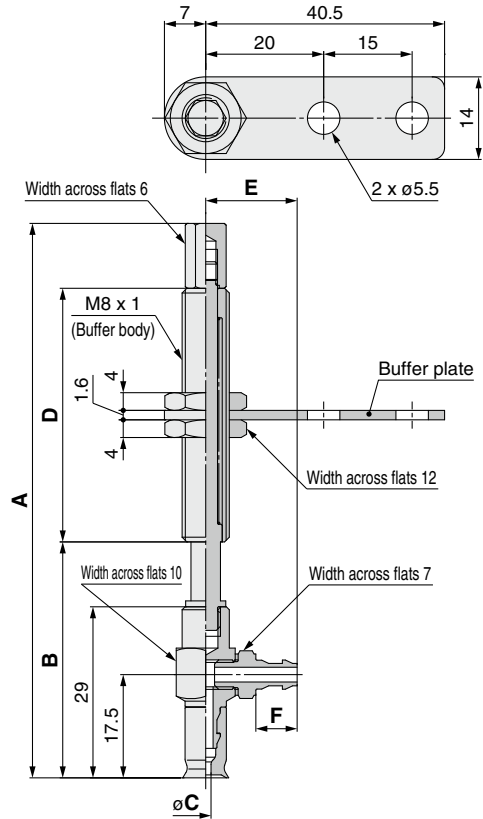
	Vacuum inlet direction	Model						E	F	G	Fitting part min. hole size	
		1 Pad size	Form	2 *1 Material	3 Buffer spec.	4 Buffer stroke	5 Vacuum inlet					6 Connection thread
ZP	R	2004 3507 4010	U	N S U F GN GS	J K JN KN	6	04	A8	4	17.5	8.2	ø2.5
						10 15 25			06	6	18.3	10.4

*1 N: NBR, S: Silicone rubber, U: Urethane rubber, F: FKM, GN: Conductive NBR, GS: Conductive silicone rubber

Dimensions/Models

With buffer/barb fitting 2 x 4 to 4 x 10

The drawings show the type with a buffer plate.



Construction p. 186
Buffer Assembly p. 194

ZPY **2004** **U** **N** **J** **6** - **N4** - **A8**

① ② ③ ④ ⑤ ⑥

Buffer specification ③

J	Rotating
K	Non-rotating
JN	Rotating (Without buffer plate)
KN	Non-rotating (Without buffer plate)

⑥ Connection thread (Male thread)

A8	M8 x 1
-----------	--------

⑤ Vacuum inlet (Barb fitting)

N4	For ø4 nylon tubing	M-5AN-4
N6	For ø6 nylon tubing	M-5AN-6
U4	For ø4 soft tubing	M-5AU-4
U6	For ø6 soft tubing	M-5AU-6

		Model						A	B	C	D								
Vacuum inlet direction	① Pad size	Form	② *1 Material	③ Buffer spec.	④ Buffer stroke	⑤ Vacuum inlet	⑥ Connection thread												
ZP	Y	2004	U	N S U F GN GS	J K JN KN	6	N4 N6 U4 U6	A8	63	37	1.2	15							
						10			94	40		43							
						15			99	45		43							
												25	109	55					
												6	63	37				1.8	15
												10	94	40					43
					15	99	45					43							
					25	109	55					43							
					6	63	37				2	15							
					10	94	40					43							
					15	99	45					43							
					25	109	55					43							

Dimensions Per Vacuum Inlet

		Model						E	F	Fitting part min. hole size	
Vacuum inlet direction	① Pad size	Form	② *1 Material	③ Buffer spec.	④ Buffer stroke	⑤ Vacuum inlet	⑥ Connection thread				
ZP	Y	2004 3507 4010	U	N S U F GN GS	J K JN KN	6	N4 U4	A8	13.5	5	ø1.8
						10 15 25			N6 U6	15.5	7

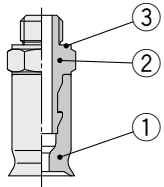
*1 N: NBR, S: Silicone rubber, U: Urethane rubber, F: FKM, GN: Conductive NBR, GS: Conductive silicone rubber

Oval Pad *ZP Series* Construction

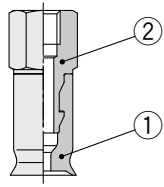
With adapter Oval flat type: 2004/3507/4010

Vacuum inlet direction **Vertical** T Type/ZP□T

ZP□T□-(A5/A6)



ZP□T□-(B4/B5)

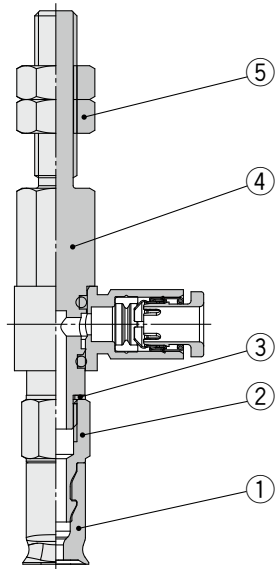


Component Parts

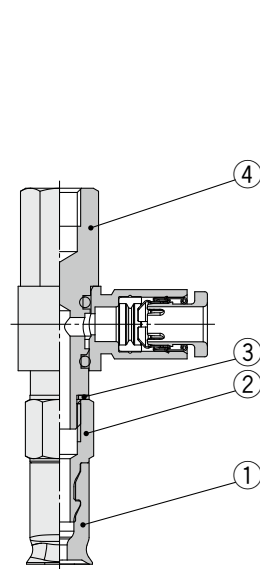
No.	Description	Material	Note
1	Pad	NBR, Silicone rubber, Urethane rubber, FKM, Conductive NBR, Conductive silicone rubber	Oval flat type
2	Adapter	Brass (Electroless nickel plating)	ZPT
		Stainless steel	ZPST
3	Gasket	Stainless steel/NBR	ZPT
		Stainless steel/FKM	ZPST

Vacuum inlet direction **Lateral** R Type/ZPR

ZPR□-(04/06)-(A5/A6)



ZPR□-(04/06)-(B4/B5)

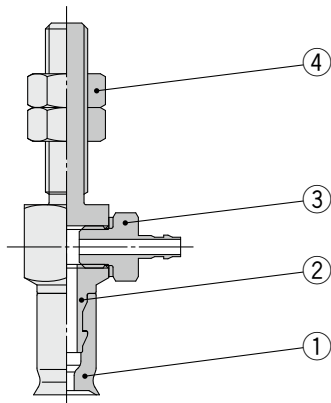


Component Parts

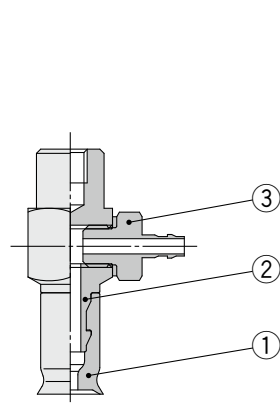
No.	Description	Material	Note
1	Pad	NBR, Silicone rubber, Urethane rubber, FKM, Conductive NBR, Conductive silicone rubber	Oval flat type
2	Adapter	Brass (Electroless nickel plating)	
3	Gasket	Stainless steel 304/NBR	
4	Adapter (With One-touch fitting)	Brass (Electroless nickel plating), PBT, NBR, Stainless steel, POM	
5	Nut	Rolled steel (Zinc chromated)	M5 x 0.8 M6 x 1

Vacuum inlet direction **Lateral** Y Type/ZPY

ZPY□-(N4/N6/U4/U6)-(A5/A6)



ZPY□-(N4/N6/U4/U6)-(B4/B5)



Component Parts

No.	Description	Material	Note
1	Pad	NBR, Silicone rubber, Urethane rubber, FKM, Conductive NBR, Conductive silicone rubber	Oval flat type
2	Adapter	Brass (Electroless nickel plating)	
3	Barb fitting	—	
4	Nut	Rolled steel (Zinc chromated)	M5 x 0.8 M6 x 1

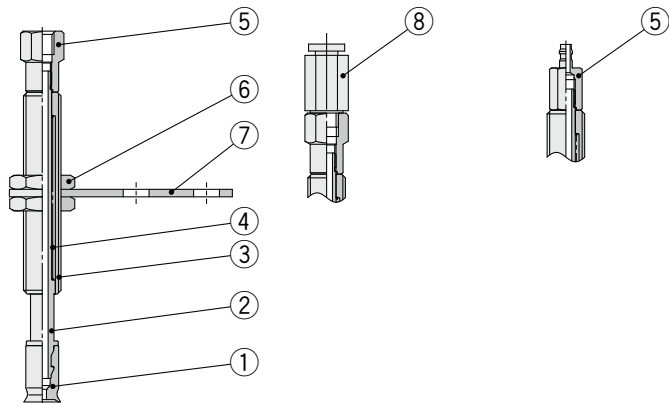
With buffer Oval flat type: 2004/3507/4010

Vacuum inlet direction **Vertical** T Type/ZPT

ZPT□-(B3/B5)-A8

ZPT□-(04/06)-A8

ZPT□-(N4/U4)-A8

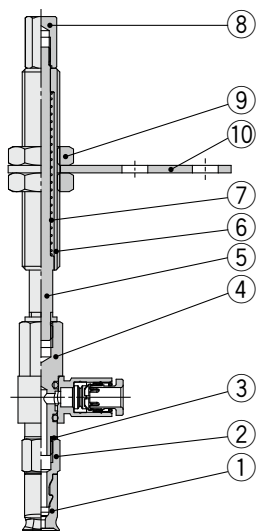


Component Parts

No.	Description	Material	Note
1	Pad	NBR, Silicone rubber, Urethane rubber, FKM, Conductive NBR, Conductive silicone rubber	Oval flat type
2	Piston rod	Stainless steel	
3	Buffer body	Brass (Electroless nickel plating)	
4	Return spring	Stainless steel	
5	Buffer adapter	Brass (Electroless nickel plating)	
6	Nut	Carbon steel (Zinc chromated)	M8 x 1
7	Buffer plate	Steel (Trivalent chromated)	
8	One-touch fitting	—	

Vacuum inlet direction **Lateral** R Type/ZPR

ZPR□-(04/06)-A8

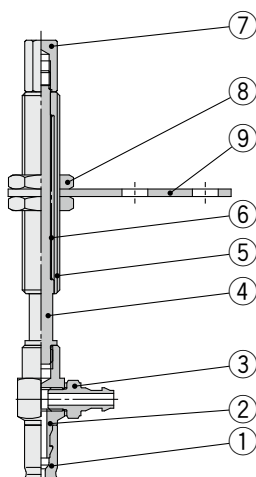


Component Parts

No.	Description	Material	Note
1	Pad	NBR, Silicone rubber, Urethane rubber, FKM, Conductive NBR, Conductive silicone rubber	Oval flat type
2	Adapter	Brass (Electroless nickel plating)	
3	Gasket	Stainless steel 304/NBR	
4	Adapter (With One-touch fitting)	Brass (Electroless nickel plating), PBT, NBR, Stainless steel, POM	
5	Piston rod	Stainless steel	
6	Buffer body	Brass (Electroless nickel plating)	
7	Return spring	Stainless steel	
8	Buffer adapter	Brass (Electroless nickel plating)	
9	Nut	Carbon steel (Zinc chromated)	M8 x 1
10	Buffer plate	Steel (Trivalent chromated)	

Vacuum inlet direction **Lateral** Y Type/ZPY

ZPY□-(N4/N6/U4/U6)-A8



Component Parts

No.	Description	Material	Note
1	Pad	NBR, Silicone rubber, Urethane rubber, FKM, Conductive NBR, Conductive silicone rubber	Oval flat type
2	Adapter	Brass (Electroless nickel plating)	
3	Barb fitting	—	
4	Piston rod	Stainless steel	
5	Buffer body	Brass (Electroless nickel plating)	
6	Return spring	Stainless steel	
7	Buffer adapter	Brass (Electroless nickel plating)	
8	Nut	Carbon steel (Zinc chromated)	M8 x 1
9	Buffer plate	Steel (Trivalent chromated)	