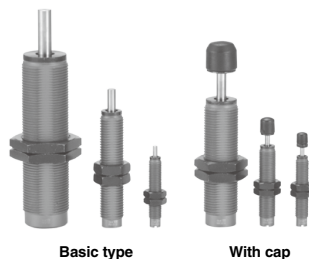


Shock Absorber

RB Series

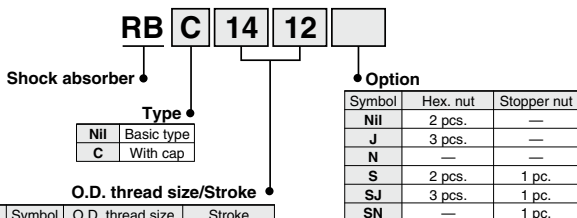


Specifications

Model	Basic type	RB0604	RB0805	RB0806	RB1006	RB1007	RB1411	RB1412	RB2015	RB2725
	With cap	—	RBC0805	RBC0806	RBC1006	RBC1007	RBC1411	RBC1412	RBC2015	RBC2725
Max. energy absorption (J) ^(Note)		0.5	0.98	2.94	3.92	5.88	14.7	19.6	58.8	147
Thread O.D. size		M6 x 0.75	M8 x 1.0		M10 x 1.0		M14 x 1.5		M20 x 1.5	M27 x 1.5
Stroke (mm)		4	5	6	6	7	11	12	15	25
Collision speed (m/s)		0.3 to 1.0		0.05 to 5.0						
Max. operating frequency (cycle/min)		80	80	80	70	70	45	45	25	10
Max. allowable thrust (N)		150	245	245	422	422	814	814	1961	2942
Ambient temperature range (°C)		-10 to 80 (No freezing)								
Spring force (N)	Extended	3.05	1.96	1.96	4.22	4.22	6.86	6.86	8.34	8.83
	Retracted	5.59	3.83	4.22	6.18	6.86	15.30	15.98	20.50	20.01
Weight (g)	Basic type	5.5	15	15	23	23	65	65	150	350
	With cap	—	16	16	25	25	70	70	165	400

(Note) The maximum energy absorption, the maximum corresponding mass of impacting object and maximum operating frequency are measured at room temperature (20 to 25°C).

How to Order



Symbol	O.D. thread size	Stroke	Symbol	O.D. thread size	Stroke
0604	6 mm	4 mm	1411	14 mm	11 mm
0805	8 mm	5 mm	1412	14 mm	12 mm
0806	8 mm	6 mm	2015	20 mm	15 mm
1006	10 mm	6 mm	2725	27 mm	25 mm
1007	10 mm	7 mm			

(Note) RB0604: With cap type is not available.

Replacement part no./Cap (Resin part only)

RBC 08 C

Applicable model

08	RBC0805, 0806	20	RBC2015
10	RBC1006, 1007	27	RBC2725
14	RBC1411, 1412		

Cap

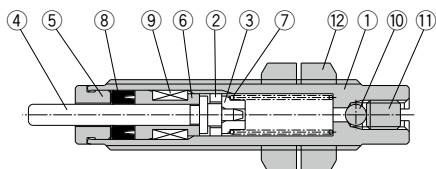
Cap cannot be mounted for basic type. Please place an order with cap type from the beginning.

RB Series

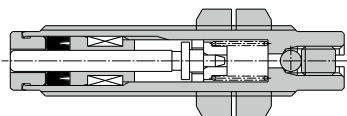
Construction

RB0604

Extended



Compressed

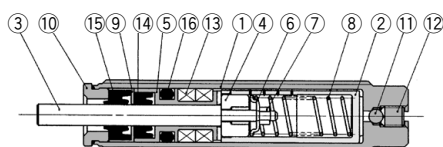


Component Parts

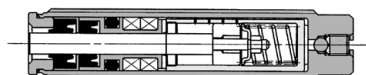
No.	Description	Material	Treatment
1	Outer tube	Free-cutting steel	Nitriding
2	Piston	Copper alloy	—
3	Spring guide	Stainless steel	—
4	Piston rod	Carbon steel	Nitriding
5	Stopper	Stainless steel	—
6	Bearing	Copper alloy	—
7	Return spring	Piano wire	Zinc trivalent chromated
8	Rod seal	NBR	—
9	Accumulator	NBR	Foam rubber
10	Steel ball	Bearing steel	—
11	Hexagon socket head cap screw	Special steel	Nickel plated
12	Hexagon nut	Carbon steel	Nickel plated

RB□0805 to 2725

Extended



Compressed

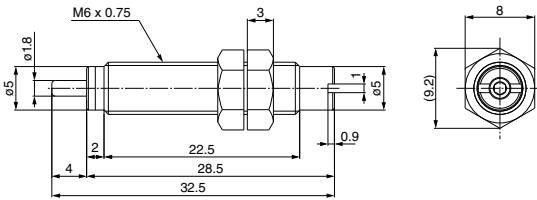


Component Parts

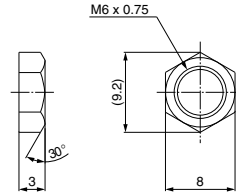
No.	Description	Material	Treatment
1	Outer tube	Rolled steel	Gray coated
2	Inner tube	Special steel	Heat treated
3	Piston rod	Special steel	Electroless nickel plated
4	Piston	Special steel	Heat treated
5	Bearing	Special bearing material	
6	Spring guide	Carbon steel	Zinc chromated
7	Lock ring	Copper	
8	Return spring	Piano wire	Zinc chromated
9	Seal holder	Copper alloy	
10	Stopper	Carbon steel	Zinc chromated
11	Steel ball	Bearing steel	
12	Set screw	Special steel	
13	Accumulator	NBR	Foam rubber
14	Rod seal	NBR	
15	Scraper	NBR	
16	Gasket	NBR	

Dimensions

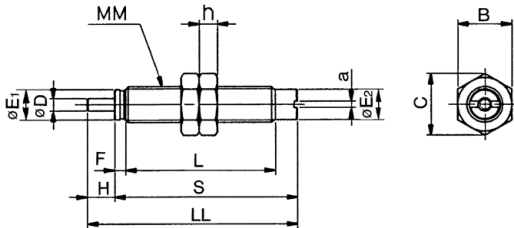
RB604



**Hexagon Nut
(2 pcs. standard equipment)**

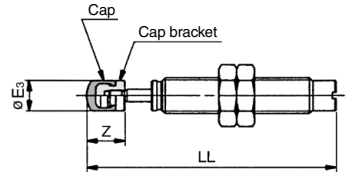


Basic type: RB0805, RB0806, RB1006, RB1007



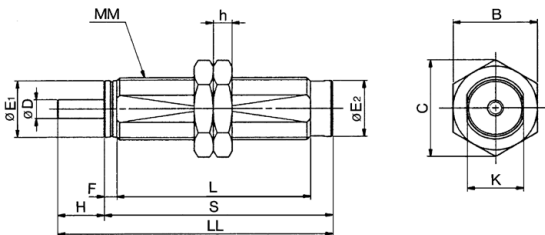
**With cap: RBC0805, RBC0806
RBC1006, RBC1007**

* Other dimensions are the same as the basic type.



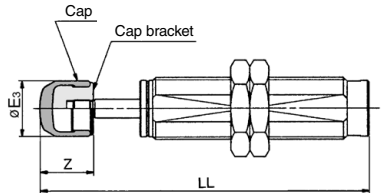
Model		Basic type dimensions								With cap *					Hexagon nut		
Basic type	With cap	D	E ₁	E ₂	F	H	a	L	LL	MM	S	E ₃	LL	Z	B	C	h
RB0805	RBC0805	2.8	6.8	6.6	2.4	5	1.4	33.4	45.8	M8 x 1.0	40.8	6.8	54.3	8.5	12	13.9	4
RB0806	RBC0806	2.8	6.8	6.6	2.4	6	1.4	33.4	46.8	M8 x 1.0	40.8	6.8	55.3	8.5	12	13.9	4
RB1006	RBC1006	3	8.8	8.6	2.7	6	1.4	39	52.7	M10 x 1.0	46.7	8.7	62.7	10	14	16.2	4
RB1007	RBC1007	3	8.8	8.6	2.7	7	1.4	39	53.7	M10 x 1.0	46.7	8.7	63.7	10	14	16.2	4

Basic type: RB1411, RB1412, RB2015, RB2725



**With cap: RBC1411, RBC1412
RBC2015, RBC2725**

* Other dimensions are the same as the basic type.

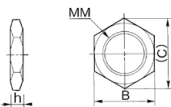


Model		Basic type dimensions								With cap *					Hexagon nut		
Basic type	With cap	D	E ₁	E ₂	F	H	K	L	LL	MM	S	E ₃	LL	Z	B	C	h
RB1411	RBC1411	5	12.2	12	3.5	11	12	58.8	78.3	M14 x 1.5	67.3	12	91.8	13.5	19	21.9	6
RB1412	RBC1412	5	12.2	12	3.5	12	12	58.8	79.3	M14 x 1.5	67.3	12	92.8	13.5	19	21.9	6
RB2015	RBC2015	6	18.2	18	4	15	18	62.2	88.2	M20 x 1.5	73.2	18	105.2	17	27	31.2	6
RB2725	RBC2725	8	25.2	25	5	25	25	86	124	M27 x 1.5	99	25	147	23	36	41.6	6

RB Series

Hexagon Nut

(2 pcs. standard equipment)



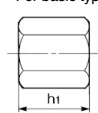
Material: Special steel
Treatment: Zinc trivalent chromated

Part no.	Dimensions			
	MM	h	B	C
RB06J	M6 x 0.75	3	8	9.2
RB08J	M8 x 1.0	4	12	13.9
RB10J	M10 x 1.0	4	14	16.2
RB14J	M14 x 1.5	6	19	21.9
RB20J	M20 x 1.5	6	27	31.2
RB27J	M27 x 1.5	6	36	41.6

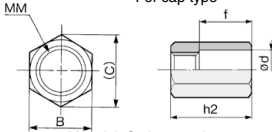
Option

Stopper nut

For basic type



For cap type

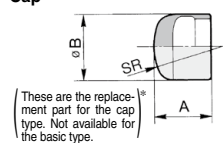


Material: Carbon steel
Treatment: Zinc trivalent chromated

Part no.	Dimensions								
	Basic type	With cap	B	C	h1	h2	MM	d	f
RB06S	—	8	9.3	5	—	M6 x 0.75	—	—	—
RB08S	RBC08S	12	13.9	6.5	23	M8 x 1.0	9	15	—
RB10S	RBC10S	14	16.2	8	23	M10 x 1.0	11	15	—
RB14S	RBC14S	19	21.9	11	31	M14 x 1.5	15	20	—
RB20S	RBC20S	27	31.2	16	40	M20 x 1.5	23	25	—
RB27S	RBC27S	36	41.6	22	51	M27 x 1.5	32	33	—

Replacement Parts

Cap



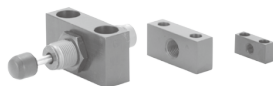
Material: Polyurethane

Part no.	Dimensions		
	A	B	SR
RBC08C	6.5	6.8	6
RBC10C	9	8.7	7.5
RBC14C	12.5	12	10
RBC20C	16	18	20
RBC27C	21	25	25

Foot Bracket for Shock Absorber

Available for the foot mounting bracket of the RB series.

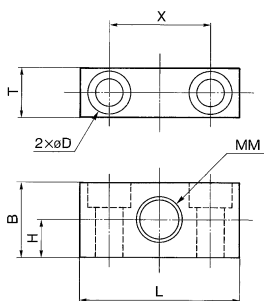
Material: Aluminum alloy
Treatment: Black hard anodized



Part no.	Applicable absorber
RB08-X331	RB□0805, 0806
RB10-X331	RB□1006, 1007
RB14-X331	RB□1411, 1412
RB20-X331	RB□2015
RB27-X331	RB□2725

* Order foot brackets separately.

Dimensions



Part no.	B	D	H	L	MM	T	X	Mounting bolt
RB08-X331	15	4.5 drill, 8 counterbore depth 4.4	7.5	32	M8 x 1.0	10	20	M4
RB10-X331	19	5.5 drill, 9.5 counterbore depth 5.4	9.5	40	M10 x 1.0	12	25	M5
RB14-X331	25	9 drill, 14 counterbore depth 8.6	12.5	54	M14 x 1.5	16	34	M8
RB20-X331	38	11 drill, 17.5 counterbore depth 10.8	19	70	M20 x 1.5	22	44	M10
RB27-X331	50	13.5 drill, 20 counterbore depth 13	25	80	M27 x 1.5	34	52	M12