

# Sine Cylinder

# REC Series

∅20, ∅25, ∅32, ∅40

## How to Order

**RE C B 25** - **150** - **M9BW** - **C**

Sine cylinder

Rod type

Mounting type

<b>B</b>	Basic type	<b>C</b>	Single clevis type
<b>L</b>	Axial foot type	<b>D</b>	Double clevis type
<b>F</b>	Rod side flange type	<b>U</b>	Rod side trunnion type
<b>G</b>	Head side flange type	<b>T</b>	Head side trunnion type

Bore size

<b>20</b>	20 mm
<b>25</b>	25 mm
<b>32</b>	32 mm
<b>40</b>	40 mm

Port type

<b>Nil</b>	Rc
<b>TN</b>	NPT
<b>TF</b>	G

Cylinder stroke (mm)  
Refer to page 121 for standard strokes.

Auto switch

<b>Nil</b>	Without auto switch (Built-in magnet)
------------	---------------------------------------

\* Select an applicable auto switch part number from the table below.

Number of auto switches

<b>Nil</b>	2 pcs.
<b>S</b>	1 pc.
<b>n</b>	"n" pcs.

Auto switch mounting bracket <sup>(Note)</sup>

Note) This symbol is indicated when the D-A9□ or M9□ type auto switch is specified. This mounting bracket does not apply to other auto switches (D-C7□ and H7□, etc.) (Nil)

### Applicable Auto Switches/Refer to pages 947 to 1067 for further information on auto switches.

Type	Special function	Electrical entry	Indicator light	Wiring (Output)	Load voltage		Auto switch model		Lead wire length (m)					Pre-wired connector	Applicable load					
					DC	AC	Perpendicular	In-line	0.5 (Nil)	1 (M)	3 (L)	5 (Z)	None (N)							
Solid state auto switch	—	Grommet	No	3-wire (NPN)	5 V, 12 V	—	M9NV	M9N	●	●	○	—	—	○	IC circuit	Relay, PLC				
				3-wire (PNP)			M9PV	M9P	●	●	○	—	○							
		2-wire		M9BV			M9B	●	●	○	—	○								
		—		—			●	—	○	—	○									
	Diagnostic indication (2-color indicator)	Grommet	Yes	3-wire (NPN)	24 V	5 V, 12 V	—	M9NWW	M9NW	●	●	○	—	—	○		IC circuit			
				3-wire (PNP)				M9PWV	M9PW	●	●	○	—	○						
				2-wire				M9BWW	M9BW	●	●	○	—	○						
				—				—	●	—	○	—	○							
				3-wire (NPN)				M9NAV*1	M9NA*1	○	○	●	—	○						
				3-wire (PNP)				M9PAV*1	M9PA*1	○	○	●	—	○						
Water resistant (2-color indicator)	Grommet	No	2-wire	5 V, 12 V	—	M9BAV*1	M9BA*1	○	○	●	—	○	—							
			—			—	●	—	○	—	○									
Reed auto switch	—	Grommet	Yes	3-wire (NPN equivalent)	24 V	12 V	—	A96V	A96	●	—	●	—	—	IC circuit	Relay, PLC				
				—				A93V*2	A93	●	●	●	—	—						
				—				A90V	A90	●	—	●	—	—						
				—				—	B54	●	—	●	—	—						
				—				—	B64	●	—	●	—	—						
		Connector		No				—	—	—	—	—	C73C	●	—		●	—	—	—
								—	—	—	—	—	—	C80C	●		—	●	—	
								—	—	—	—	—	—	—	—		—	—	—	
								—	—	—	—	—	—	—	—		—	—	—	
								—	—	—	—	—	—	—	B59W		●	—	●	

\*1 Water resistant type auto switches can be mounted on the above models, but in such case SMC cannot guarantee water resistance. A water-resistant type cylinder is recommended for use in an environment which requires water resistance. However, please contact SMC for water-resistant products of ∅20 and ∅25.

\*2 1 m type lead wire is only applicable to D-A93.

\* Lead wire length symbols: 0.5 m ..... Nil (Example) M9NW  
 1 m ..... M (Example) M9NWM  
 3 m ..... L (Example) M9NWL  
 5 m ..... Z (Example) M9NWZ  
 None ..... N (Example) H7CN

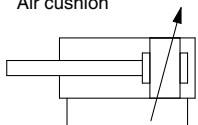
\* Solid state auto switches marked with "○" are produced upon receipt of order.

\* Since there are other applicable auto switches than listed, refer to page 132 for details.  
 \* For details about auto switches with pre-wired connector, refer to pages 1014 and 1015.  
 \* D-A9□(V)/M9□(V)/M9□W(V), M9□A(V) auto switches are shipped together (not assembled). (Only auto switch mounting brackets are assembled before shipped.)

## Standard Specifications



**Symbol**  
Air cushion



Bore size (mm)	20	25	32	40
<b>Action</b>	Double acting, Single rod			
<b>Fluid</b>	Air			
<b>Proof pressure</b>	1.5 MPa			
<b>Maximum operating pressure</b>	1.0 MPa			
<b>Minimum operating pressure</b>	0.2 MPa			
<b>Ambient and fluid temperature</b>	-10 to 60°C			
<b>Piston speed</b>	50 to 500 mm/s			
<b>Cushion</b>	Air cushion (End rubber bumper)			
<b>Effective cushioning stroke (mm)</b>	45	45	50	60
<b>Lubrication</b>	Not required (Non-lube)			
<b>Stroke length tolerance</b>	Up to 1000 st: $^{+1.4}_0$ , 1001 to 1500 st: $^{+1.8}_0$			

REA

REB

REC

Smooth

Low Speed

MQ

RHC

RZQ

## Standard Stroke

Bore size (mm)	Minimum stroke (1) (Recommended)	Standard stroke (2) (mm)	Maximum manufacturable stroke (mm)
20	150	Up to 700	1500
25	150	Up to 700	
32	150	Up to 1000	
40	200	Up to 1000	

Note 1) The recommended minimum strokes or shorter lengths are available. However, since the effective cushion stroke is longer, the cushion performance may differ from the standard specifications.

Note 2) When exceeding the standard strokes, it will be out of warranty.

## Weight

Bore size (mm)		20	25	32	40
Basic Weight	Basic type	0.32	0.47	0.74	1.25
	Axial foot type	0.47	0.63	0.90	1.52
	Flange type	0.38	0.56	0.83	1.37
	Single clevis type	0.36	0.51	0.78	1.34
	Double clevis type	0.37	0.53	0.79	1.38
	Trunnion type	0.36	0.54	0.81	1.35
Additional weight per each 50 mm of stroke		0.05	0.07	0.09	0.13
Mounting bracket	Pivot bracket for clevis (With pin)	0.07	0.07	0.14	0.14
	Single knuckle joint	0.06	0.06	0.06	0.23
	Double knuckle joint (With pin)	0.07	0.07	0.07	0.20

\* Calculation: (Example) ..... **RECL32-200**

Basic weight ..... 0.90 (Foot type ø32)

Additional weight ..... 0.09/50 st

Cylinder stroke ..... 200 (st)

$0.90 + 0.09 \times 200/50 = 1.26 \text{ kg}$

## Accessory (Option)

Refer to pages 127 and 128 for part numbers and dimensions of the single knuckle joint, double knuckle joint, clevis pin, and knuckle pin.

## Mounting Bracket Part No.

Mounting bracket	Minimum order	Bore size (mm)				Description (when ordering a minimum number)
		20	25	32	40	
Axial foot *	2	CM-L020B	CM-L032B	CM-L040B		Foot 2 pcs., Mounting nut 1 pc.
Flange	1	CM-F020B	CM-F032B	CM-F040B		Flange 1 pc.
Single clevis**	1	CM-C020B	CM-C032B	CM-C040B		Single clevis 1 pc., Liner 3 pcs.
Double clevis (With pin)**	1	CM-D020B	CM-D032B	CM-D040B		Double clevis 1 pc., Liner 3 pcs., Clevis pin 1 pc., Retaining ring 2 pcs.
Trunnion (With nut)	1	CM-T020B	CM-T032B	CM-T040B		Trunnion 1 pc., Trunnion nut 1 pc.

\* When ordering foot bracket, order 2 pieces per cylinder.

\*\* 3 liners are included in the clevis bracket for adjusting an angle when mounting it.

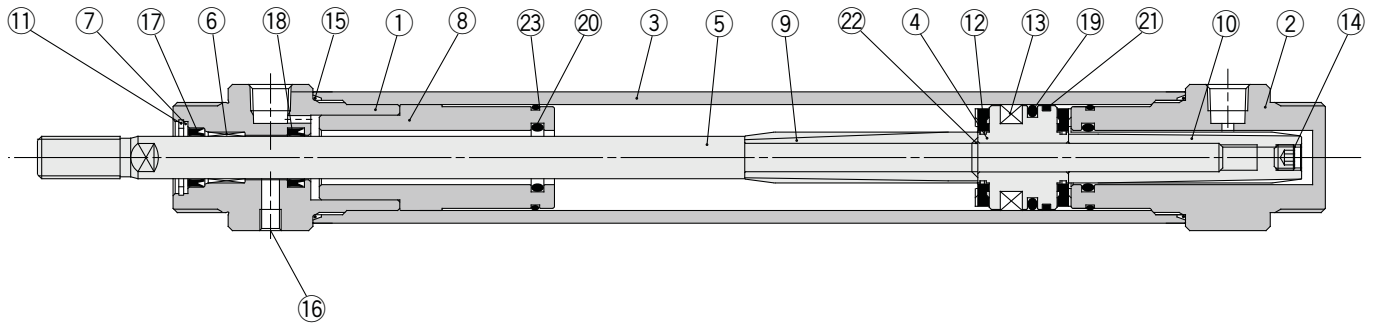
\*\*\* Clevis pin and retaining ring (cotter pin for ø40) are packaged together.

D-□

-X□

# REC Series

## Construction



### Component Parts

No.	Description	Material	Qty.	Note
1	Rod cover	Aluminum alloy	1	Clear anodized
2	Head cover	Aluminum alloy	1	Clear anodized
3	Cylinder tube	Aluminum alloy	1	Hard anodized
4	Piston	Aluminum alloy	1	Chromated
5	Piston rod	Stainless steel	1	Hard chrome plated
6	Bushing	Bearing alloy	1	
7	Seal retainer	Stainless steel	1	
8	Cushion seal holder	Aluminum alloy	1	Chromated
9	Cushion ring A	Brass	1	Electroless nickel plated
10	Cushion ring B	Brass	1	Electroless nickel plated
11	Retaining ring	Carbon steel	1	Phosphate coated
12	Bumper	Urethane	2	
13	Magnet	—	1	
14	Hexagon socket head set screw	Carbon steel	1	Zinc chromated
15	Cylinder tube gasket	NBR	2	
16	Hexagon socket head set screw	Carbon steel	1	Zinc chromated

### Component Parts

No.	Description	Material	Qty.	Note
17	Rod seal A	NBR	1	
18	Rod seal B	NBR	1	
19	Piston seal	NBR	1	
20	Cushion seal	NBR	2	
21	Wear ring	Resin	1	
22	Piston gasket	NBR	1	
23	Holder gasket	NBR	2	

### Replacement Parts/Seal Kit

Bore size (mm)	Kit no.	Contents
20	REC20-PS	Set of nos. above (15, 17, 19, 20, 21, 23)
25	REC25-PS	
32	REC32-PS	
40	REC40-PS	

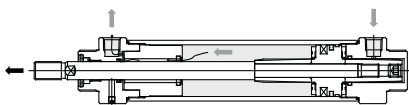
\* Seal kit includes a grease pack (10 g).  
Order with the following part number when only the grease pack is needed.  
**Grease pack part no.: GR-S-010 (10 g)**

### ⚠ Caution

When disassembling cylinders with bore sizes of  $\phi 20$  to  $\phi 40$ , grip the double flat part of either the tube cover or the rod cover with a vise and loosen the other side with a wrench or an adjustable angle wrench, and then remove the cover. When re-tightening, tighten approximately 2 degrees more than the original position.

## Working Principle

### 1. Start-up



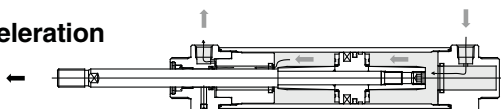
Actuating air passes from cylinder port on head side and enters the right hand side of chamber of the cylinder from space between cushion seal and U-shaped groove on the outer surface of cushion spear. Air in the left hand side of chamber of the cylinder passes through space between cushion seal and piston rod, and is released to the cylinder port on rod side.

### 2. In-rush/acceleration



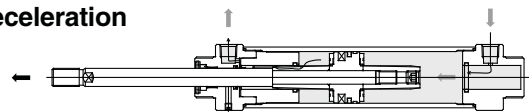
Differential pressure (theoretical force) generated on the left and right sides of piston becomes larger than starting resistance, and piston starts to actuate. With the actuation, U-shaped groove on the cushion spear outer surface gradually becomes deeper, air flow necessary for piston enters the right hand side of chamber of the cylinder, and piston accelerates. This acceleration process can be achieved smoothly (as a sine function) by using a cushion spear on which a U-shaped groove is machined.

### 3. Acceleration



When piston starts to actuate, air can go in and out freely because cushion spear on head side is released from cushion seal. With this actuation, piston speed accelerates (or maintains the same speed).

### 4. Deceleration



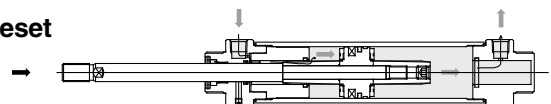
When cushion spear on rod side meets cushion seal, air in cushion chamber on rod side flows through space between cushion spear groove and cushion seal. Since the space is reduced as a sine function, the cylinder rod decelerates smoothly.

### 5. Stop



The piston stops at the stroke end on rod side with smooth cushioning. Air flow which is switched by solenoid valve is reversed from the one indicated in the above "1. Start-up".

### 6. Reset



Actuating air passes from cylinder port on rod side and enters the left chamber of the cylinder from space between cushion seal and U-shaped groove on the outer surface of cushion spear. Also, air in right hand side of chamber of piston is exhausted from cylinder port. As U-shaped groove on the cushion spear outer surface gradually becomes deeper, the cylinder accelerates.

## Clean Series

**10** – REC **Mounting type** **Bore size** – **Stroke**

### Clean Series

<b>10</b>	Relief type
<b>11</b>	Vacuum type

The type which is applicable for using inside the clean room graded ISO Class 4 by making an actuator's rod section a double seal construction and discharging by relief port directly to the outside of clean room.  
The plug (M5 x 0.8) in the standard dimensions becomes a relief port.



For detailed specifications about the clean series, refer to the "Pneumatic Clean Series" (CAT.E02-23).

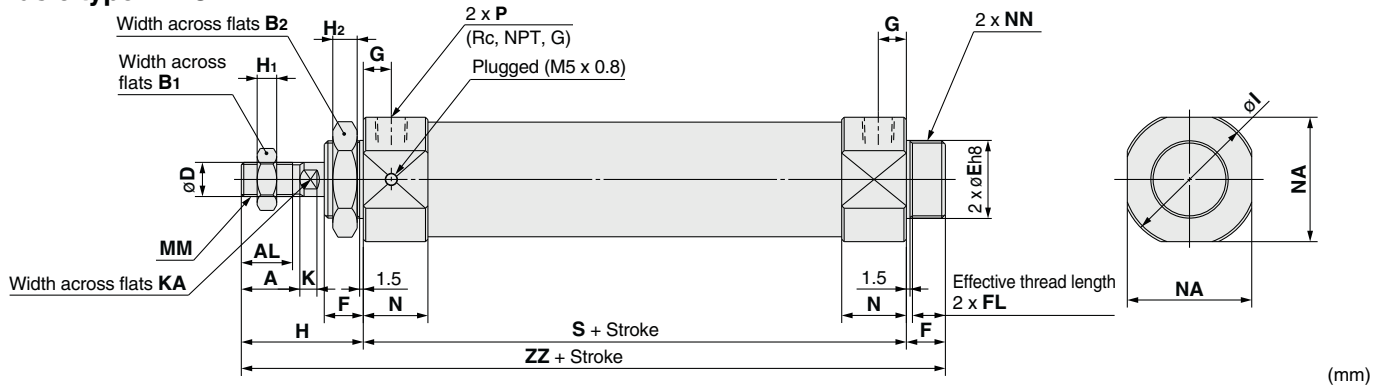
## Specifications

<b>Action</b>	Double acting, Single rod
<b>Bore size</b>	ø20, ø25, ø32, ø40
<b>Maximum operating pressure</b>	1.0 MPa
<b>Minimum operating pressure</b>	0.2 MPa
<b>Cushion</b>	Air cushion
<b>Relief port size</b>	M5 x 0.8
<b>Piston speed</b>	50 to 400 mm/s
<b>Mounting</b>	Basic type, Axial foot type, Rod side flange type Head side flange type

\* Auto switch can be mounted.

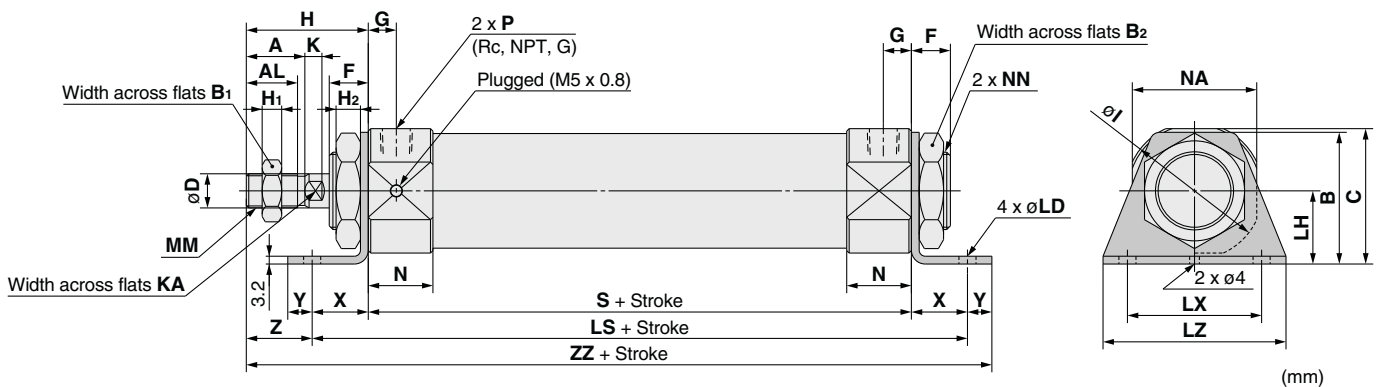
## Dimensions

### Basic type: RECB



Bore (mm)	A	AL	B1	B2	D	E	F	FL	G	H	H1	H2	I	K	KA	MM	N	NA	NN	P	S	ZZ
20	18	15.5	13	26	8	20 <sup>0</sup> <sub>-0.033</sub>	13	10.5	10	41	5	8	33.5	5	6	M8 x 1.25	20	30	M20 x 1.5	1/8	146	200
25	22	19.5	17	32	10	26 <sup>0</sup> <sub>-0.033</sub>	13	10.5	10	45	6	8	37.5	5.5	8	M10 x 1.25	20	34.5	M26 x 1.5	1/8	146	204
32	22	19.5	17	32	12	26 <sup>0</sup> <sub>-0.033</sub>	13	10.5	11	45	6	8	46.5	5.5	10	M10 x 1.25	22	42.5	M26 x 1.5	1/8	159	217
40	24	21	22	41	14	32 <sup>0</sup> <sub>-0.039</sub>	16	13.5	12.5	50	8	10	56	7	12	M14 x 1.5	26.5	51	M32 x 2	1/4	181	247

### Axial foot type: RECL



Bore (mm)	A	AL	B	B1	B2	C	D	F	G	H	H1	H2	I	K	KA	LD	LH	LS	LX	LZ	MM	N	NA
20	18	15.5	40	13	26	40	8	13	10	41	5	8	33.5	5	6	6.8	25	186	40	55	M8 x 1.25	20	30
25	22	19.5	47	17	32	45.5	10	13	10	45	6	8	37.5	5.5	8	6.8	28	186	40	55	M10 x 1.25	20	34.5
32	22	19.5	47	17	32	49.5	12	13	11	45	6	8	46.5	5.5	10	6.8	28	199	40	55	M10 x 1.25	22	42.5
40	24	21	54	22	41	55.5	14	16	12.5	50	8	10	56.2	7	12	7	30	227	55	75	M14 x 1.5	26.5	51

Bore (mm)	NN	P	S	X	Y	Z	ZZ
20	M20 x 1.5	1/8	146	20	8	21	215
25	M26 x 1.5	1/8	146	20	8	25	219
32	M26 x 1.5	1/8	159	20	8	25	232
40	M32 x 2	1/4	181	23	10	27	264

\* Bracket is shipped together with the product.

REA

REB

REC

Smooth

Low Speed

MQ

RHC

RZQ

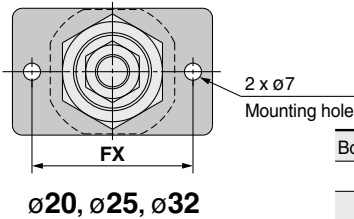
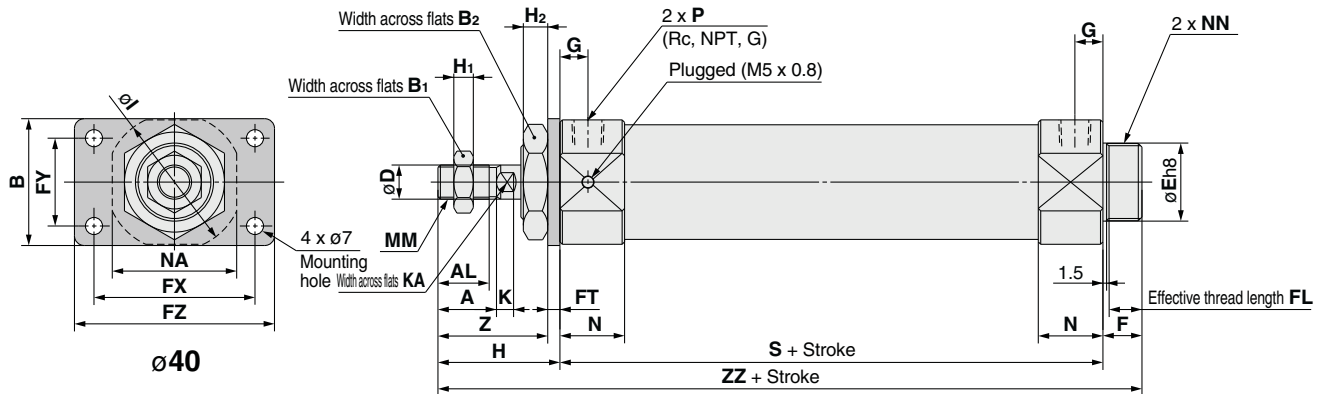
D-□

-X□

# REC Series

## Dimensions

### Rod side flange type: RECF



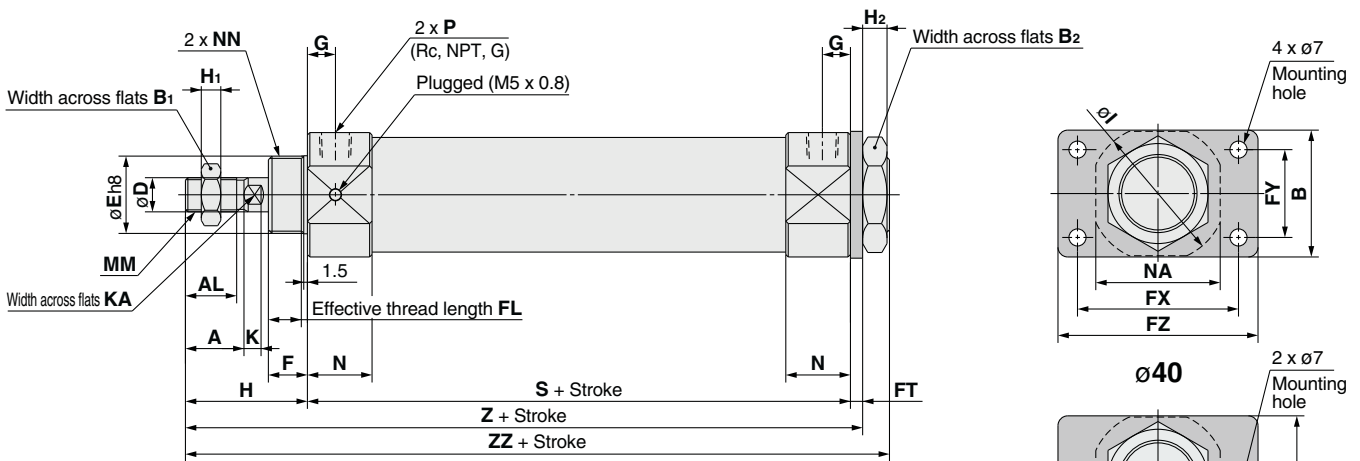
Bore (mm)	A	AL	B	B <sub>1</sub>	B <sub>2</sub>	D	E	F	FL	FT	FX	FY	FZ	G	H
20	18	15.5	34	13	26	8	20 <sup>0</sup> <sub>-0.033</sub>	13	10.5	4	60	—	75	10	41
25	22	19.5	40	17	32	10	26 <sup>0</sup> <sub>-0.033</sub>	13	10.5	4	60	—	75	10	45
32	22	19.5	40	17	32	12	26 <sup>0</sup> <sub>-0.033</sub>	13	10.5	4	60	—	75	11	45
40	24	21	52	22	41	14	32 <sup>0</sup> <sub>-0.039</sub>	16	13.5	5	66	36	82	12.5	50

Bore (mm)	H <sub>1</sub>	H <sub>2</sub>	I	K	KA	MM	N	NA	NN	P	S	Z	ZZ
20	5	8	33.5	5	6	M8 x 1.25	20	30	M20 x 1.5	1/8	146	37	200
25	6	8	37.5	5.5	8	M10 x 1.25	20	34.5	M26 x 1.5	1/8	146	41	204
32	6	8	46.5	5.5	10	M10 x 1.25	22	42.5	M26 x 1.5	1/8	159	41	217
40	8	10	56.2	7	12	M14 x 1.5	26.5	51	M32 x 2	1/4	181	45	247

\* Bracket is shipped together with the product.

### Head side flange type: RECG



Bore (mm)	A	AL	B	B <sub>1</sub>	B <sub>2</sub>	D	E	F	FL	FT	FX	FY	FZ	G	H
20	18	15.5	34	13	26	8	20 <sup>0</sup> <sub>-0.033</sub>	13	10.5	4	60	—	75	10	41
25	22	19.5	40	17	32	10	26 <sup>0</sup> <sub>-0.033</sub>	13	10.5	4	60	—	75	10	45
32	22	19.5	40	17	32	12	26 <sup>0</sup> <sub>-0.033</sub>	13	10.5	4	60	—	75	11	45
40	24	21	52	22	41	14	32 <sup>0</sup> <sub>-0.039</sub>	16	13.5	5	66	36	82	12.5	50

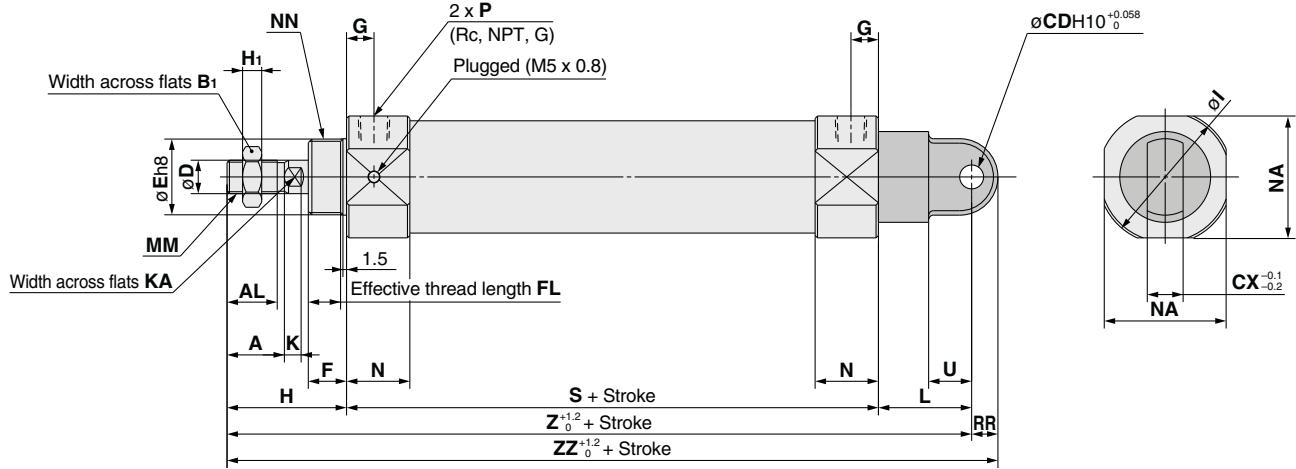
  

Bore (mm)	H <sub>1</sub>	H <sub>2</sub>	I	K	KA	MM	N	NA	NN	P	S	Z	ZZ
20	5	8	33.5	5	6	M8 x 1.25	20	30	M20 x 1.5	1/8	146	191	200
25	6	8	37.5	5.5	8	M10 x 1.25	20	34.5	M26 x 1.5	1/8	146	195	204
32	6	8	46.5	5.5	10	M10 x 1.25	22	42.5	M26 x 1.5	1/8	159	208	217
40	8	10	56.2	7	12	M14 x 1.5	26.5	51	M32 x 2	1/4	181	236	247

\* Bracket is shipped together with the product.

**Dimensions**

**Single clevis type: RECC**

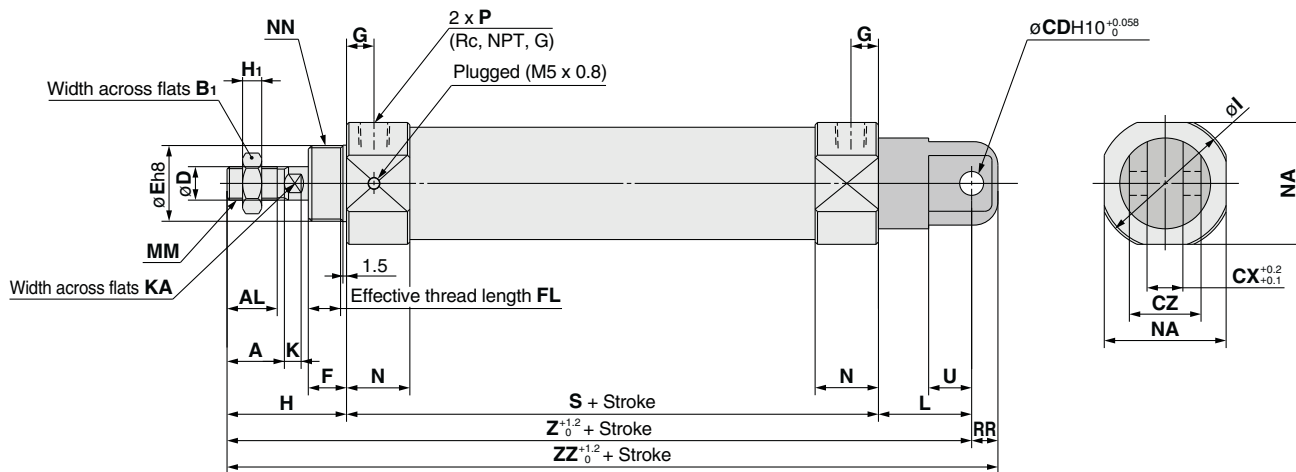


Bore (mm)	A	AL	B1	CD	CX	D	E	F	FL	G	H	H1	I	K	KA	L	MM	N
20	18	15.5	13	9	10	8	20 <sup>0</sup> <sub>-0.033</sub>	13	10.5	10	41	5	33.5	5	6	30	M8 x 1.25	20
25	22	19.5	17	9	10	10	26 <sup>0</sup> <sub>-0.033</sub>	13	10.5	10	45	6	37.5	5.5	8	30	M10 x 1.25	20
32	22	19.5	17	9	10	12	26 <sup>0</sup> <sub>-0.033</sub>	13	10.5	11	45	6	46.5	5.5	10	30	M10 x 1.25	22
40	24	21	22	10	15	14	32 <sup>0</sup> <sub>-0.039</sub>	16	13.5	12.5	50	8	56.2	7	12	39	M14 x 1.5	26.5

Bore (mm)	NA	NN	P	RR	S	U	Z	ZZ
20	30	M20 x 1.5	1/8	9	146	14	217	226
25	34.5	M26 x 1.5	1/8	9	146	14	221	230
32	42.5	M26 x 1.5	1/8	9	159	14	234	243
40	51	M32 x 2	1/4	11	181	18	270	281

**Double clevis type: RECD**



Bore (mm)	A	AL	B1	CD	CX	CZ	D	E	F	FL	G	H	H1	I	K	KA	L	MM
20	18	15.5	13	9	10	19	8	20 <sup>0</sup> <sub>-0.033</sub>	13	10.5	10	41	5	33.5	5	6	30	M8 x 1.25
25	22	19.5	17	9	10	19	10	26 <sup>0</sup> <sub>-0.033</sub>	13	10.5	10	45	6	37.5	5.5	8	30	M10 x 1.25
32	22	19.5	17	9	10	19	12	26 <sup>0</sup> <sub>-0.033</sub>	13	10.5	11	45	6	46.5	5.5	10	30	M10 x 1.25
40	24	21	22	10	15	30	14	32 <sup>0</sup> <sub>-0.039</sub>	16	13.5	12.5	50	8	56.2	7	12	39	M14 x 1.5

Bore (mm)	N	NA	NN	P	RR	S	U	Z	ZZ
20	20	30	M20 x 1.5	1/8	9	146	14	217	226
25	20	34.5	M26 x 1.5	1/8	9	146	14	221	230
32	22	42.5	M26 x 1.5	1/8	9	159	14	234	243
40	26.5	51	M32 x 2	1/4	11	181	18	270	281

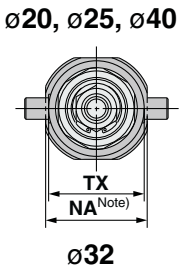
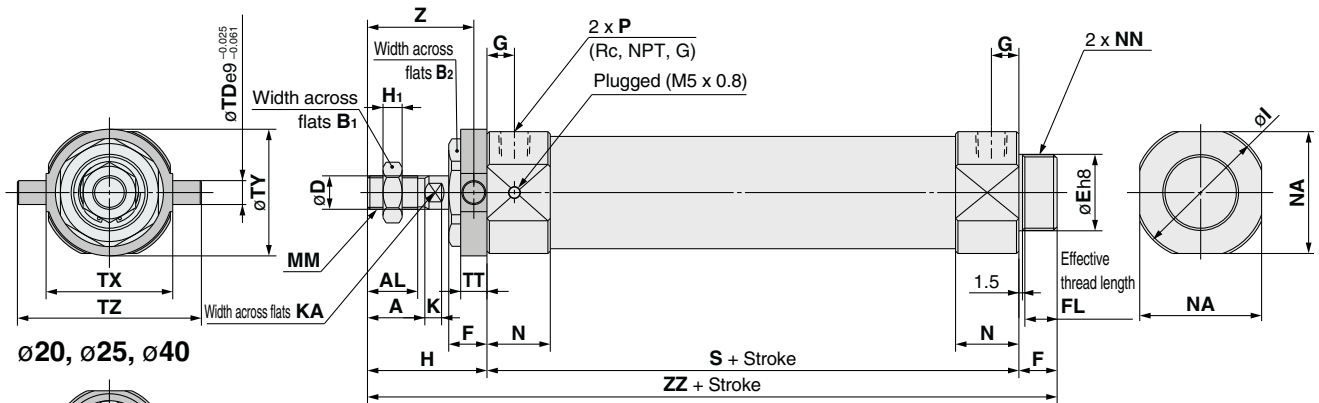
- REA
- REB
- REC**
- Smooth
- Low Speed
- MQ
- RHC
- RZQ

- D-□
- X□

# REC Series

## Dimensions

### Rod side trunnion type: RECU



(mm)														
Bore (mm)	A	AL	B <sub>1</sub>	B <sub>2</sub>	D	E	F	FL	G	H	H <sub>1</sub>	I	K	KA
20	18	15.5	13	26	8	20 <sup>0</sup> <sub>-0.033</sub>	13	10.5	10	41	5	33.5	5	6
25	22	19.5	17	32	10	26 <sup>0</sup> <sub>-0.033</sub>	13	10.5	10	45	6	37.5	5.5	8
32	22	19.5	17	32	12	26 <sup>0</sup> <sub>-0.033</sub>	13	10.5	11	45	6	46.5	5.5	10
40	24	21	22	41	14	32 <sup>0</sup> <sub>-0.039</sub>	16	13.5	12.5	50	8	56.2	7	12

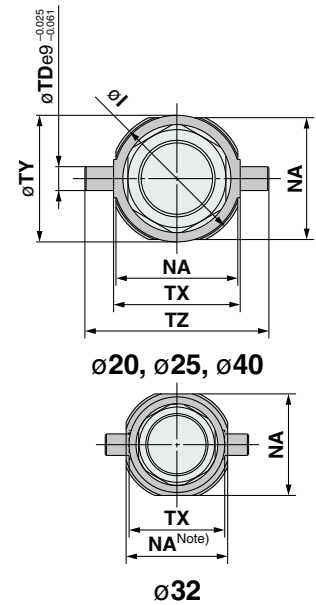
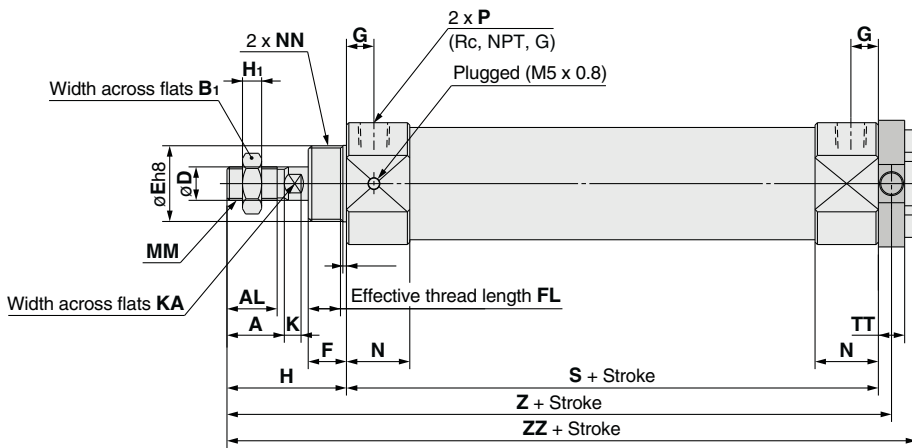
  

Bore (mm)	MM	N	NA	NN	P	S	TD	TT	TX	TY	TZ	Z	ZZ
20	M8 x 1.25	20	30	M20 x 1.5	1/8	146	8	10	32	32	52	36	200
25	M10 x 1.25	20	34.5	M26 x 1.5	1/8	146	9	10	40	40	60	40	204
32	M10 x 1.25	22	42.5	M26 x 1.5	1/8	159	9	10	40	40	60	40	217
40	M14 x 1.5	26.5	51	M32 x 2	1/4	181	10	11	53	53	77	44.5	247

Note) For ø32, a trunnion pivot bracket NA (42.5) is used as standard.

\* Bracket is shipped together with the product.

### Head side trunnion type: RECT



(mm)														
Bore (mm)	A	AL	B <sub>1</sub>	D	E	F	FL	G	H	H <sub>1</sub>	I	K	KA	MM
20	18	15.5	13	8	20 <sup>0</sup> <sub>-0.033</sub>	13	10.5	10	41	5	33.5	5	6	M8 x 1.25
25	22	19.5	17	10	26 <sup>0</sup> <sub>-0.033</sub>	13	10.5	10	45	6	37.5	5.5	8	M10 x 1.25
32	22	19.5	17	12	26 <sup>0</sup> <sub>-0.033</sub>	13	10.5	11	45	6	46.5	5.5	10	M10 x 1.25
40	24	21	22	14	32 <sup>0</sup> <sub>-0.039</sub>	16	13.5	12.5	50	8	56.2	7	12	M14 x 1.5

Bore (mm)	N	NA	NN	P	S	TD	TT	TX	TY	TZ	Z	ZZ
20	20	30	M20 x 1.5	1/8	146	8	10	32	32	52	192	202
25	20	34.5	M26 x 1.5	1/8	146	9	10	40	40	60	196	206
32	22	42.5	M26 x 1.5	1/8	159	9	10	40	40	60	209	219
40	26.5	51	M32 x 2	1/4	181	10	11	53	53	77	236.5	247

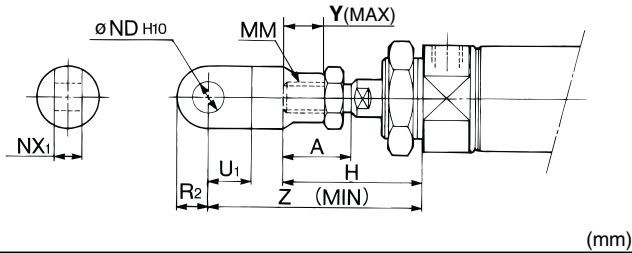
\* Bracket is shipped together with the product.

Note) For ø32, a trunnion pivot bracket NA (42.5) is used as standard.



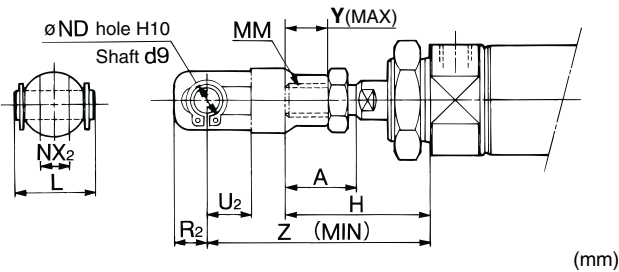
# Accessory Dimensions 1

## Single Knuckle Joint Mounting



Bore (mm)	A	H	MM	NDH10	NX1	U1	R2	Y	Z
20	18	41	M8 x 1.25	9 <sup>+0.058</sup> <sub>0</sub>	9 <sup>-0.1</sup> <sub>-0.2</sub>	14	10	11	66
25, 32	22	45	M10 x 1.25	9 <sup>+0.058</sup> <sub>0</sub>	9 <sup>-0.1</sup> <sub>-0.2</sub>	14	10	14	69
40	24	50	M14 x 1.5	12 <sup>+0.070</sup> <sub>0</sub>	16 <sup>-0.1</sup> <sub>-0.3</sub>	20	14	13	92

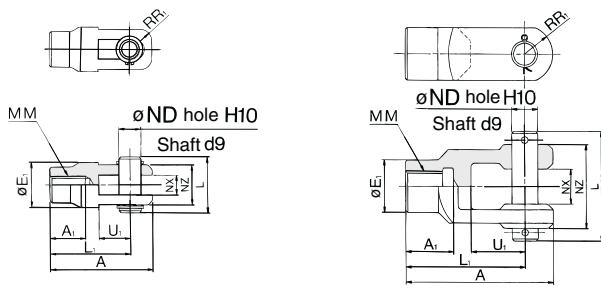
## Double Knuckle Joint Mounting



Bore (mm)	A	H	L	MM	ND	NX2	R2	U2	Y	Z
20	18	41	25	M8 x 1.25	9	9 <sup>+0.2</sup> <sub>+0.1</sub>	10	14	11	66
25, 32	22	45	25	M10 x 1.25	9	9 <sup>+0.2</sup> <sub>+0.1</sub>	10	14	14	69
40	24	50	49.7	M14 x 1.5	12	16 <sup>+0.3</sup> <sub>+0.1</sub>	13	25	13	92

## Double Knuckle Joint

**Y-020B, Y-032B** Material: Rolled steel      **Y-040B** Material: Cast iron



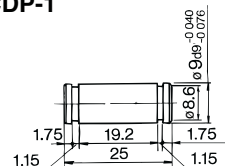
Part no.	Applicable bore size (mm)	A	A1	E1	L	L1	MM	ND	NX	NZ	R1	U1	Applicable pin part no.	Retaining ring Cotter pin Size
<b>Y-020B</b>	20	46	16	20	25	36	M8 x 1.25	9	9 <sup>+0.2</sup> <sub>+0.1</sub>	18	5	14	CDP-1	Type C9 for shaft
<b>Y-032B</b>	25, 32	48	18	20	25	38	M10 x 1.25	9	9 <sup>+0.2</sup> <sub>+0.1</sub>	18	5	14	CDP-1	Type C9 for shaft
<b>Y-040B</b>	40	68	22	24	49.7	55	M14 x 1.5	12	16 <sup>+0.3</sup> <sub>+0.1</sub>	38	13	25	CDP-3	ø3 x 18 L

\* Knuckle pins and retaining rings (cotter pins for ø40) are included.

## Double Clevis Pin/Material: Carbon steel

Bore size/ø20, ø25, ø32

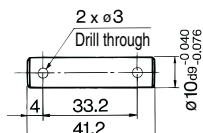
CDP-1



Retaining ring: Type C9 for shaft

Bore size/ø40

CDP-2

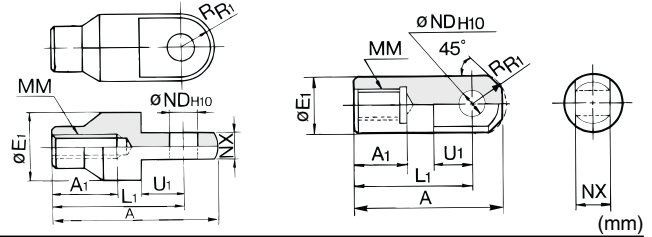


Cotter pin: ø3 x 18 L

\* Retaining rings (cotter pins for ø40) are included.

## Single Knuckle Joint

**I-020B, 032B** Material: Rolled steel      **I-040B** Material: Free cutting sulfur steel



Part no.	Applicable bore size (mm)	A	A1	E1	L1	MM	NDH10	NX	R1	U1
<b>I-020B</b>	20	46	16	20	36	M8 x 1.25	9 <sup>+0.058</sup> <sub>0</sub>	9 <sup>-0.1</sup> <sub>-0.2</sub>	10	14
<b>I-032B</b>	25, 32	48	18	20	38	M10 x 1.25	9 <sup>+0.058</sup> <sub>0</sub>	9 <sup>-0.1</sup> <sub>-0.2</sub>	10	14
<b>I-040B</b>	40	69	22	24	55	M14 x 1.5	12 <sup>+0.070</sup> <sub>0</sub>	16 <sup>-0.1</sup> <sub>-0.3</sub>	15.5	20

REA

REB

REC

Smooth

Low Speed

MQ

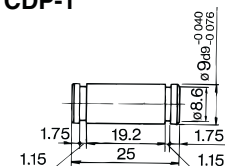
RHC

RZQ

## Double Knuckle Pin/Material: Carbon steel

Bore size/ø20, ø25, ø32

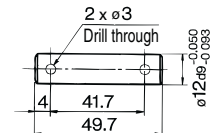
CDP-1



Retaining ring: Type C9 for shaft

Bore size/ø40

CDP-3



Cotter pin: ø3 x 18 L

\* Retaining rings (cotter pins for ø40) are included.

D-□

-X□

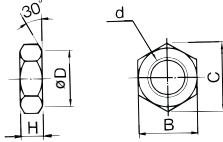


# REC Series

# Accessory Dimensions 2

## Rod End Nut

Material: Carbon steel

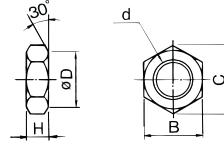


(mm)

Part no.	Applicable bore size (mm)	B	C	D	d	H
NT-02	20	13	15.0	12.5	M8 x 1.25	5
NT-03	25, 32	17	19.6	16.5	M10 x 1.25	6
NT-04	40	22	25.4	21.0	M14 x 1.5	8

## Mounting Nut

Material: Carbon steel

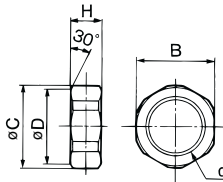


(mm)

Part no.	Applicable bore size (mm)	B	C	D	d	H
SN-020B	20	26	30	25.5	M20 x 1.5	8
SN-032B	25, 32	32	37	31.5	M26 x 1.5	8
SN-040B	40	41	47.3	40.5	M32 x 2.0	10

## Trunnion Nut

Material: Carbon steel



(mm)

Part no.	Applicable bore size (mm)	B	C	D	d	H
TN-020B	20	26	28	25.5	M20 x 1.5	10
TN-032B	25, 32	32	34	31.5	M26 x 1.5	10
TN-040B	40	41	45	40.5	M32 x 2	10

Refer to page 1108 (CM2-XB12: External stainless steel cylinder) for stainless steel mounting brackets and accessories (some are not applicable.).

\* Same mounting brackets and accessories are used as CM2 series (Best Pneumatics No. 2-1).

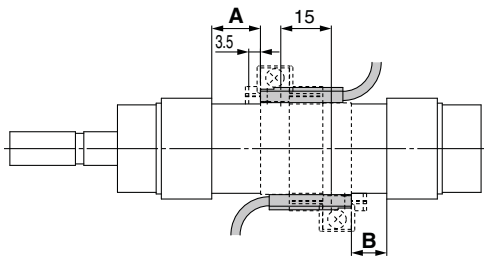
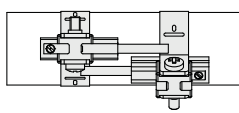
## Minimum Stroke for Auto Switch Mounting

n: No. of auto switches (mm)

Auto switch model	No. of auto switches mounted				
	1	2		n	
		Different surfaces	Same surface	Different surfaces	Same surface
<b>D-M9□</b>	5	15 Note 1)	40 Note 1)	$20 + 35 \frac{(n-2)}{2}$ (n = 2, 4, 6...) <sup>Note 3)</sup>	$55 + 35 (n-2)$ (n = 2, 3, 4, 5...)
<b>D-M9□W</b>	10	15 Note 1)	40 Note 1)	$20 + 35 \frac{(n-2)}{2}$ (n = 2, 4, 6...) <sup>Note 3)</sup>	$55 + 35 (n-2)$ (n = 2, 3, 4, 5...)
<b>D-M9□A</b>	10	25	40 Note 1)	$25 + 35 \frac{(n-2)}{2}$ (n = 2, 4, 6...) <sup>Note 3)</sup>	$60 + 35 (n-2)$ (n = 2, 3, 4, 5...)
<b>D-A9□</b>	5	15	30 Note 1)	$15 + 35 \frac{(n-2)}{2}$ (n = 2, 4, 6...) <sup>Note 3)</sup>	$50 + 35 (n-2)$ (n = 2, 3, 4, 5...)
<b>D-M9□V</b>	5	20	35	$20 + 35 \frac{(n-2)}{2}$ (n = 2, 4, 6...) <sup>Note 3)</sup>	$35 + 35 (n-2)$ (n = 2, 3, 4, 5...)
<b>D-A9□V</b>	5	15	25	$15 + 35 \frac{(n-2)}{2}$ (n = 2, 4, 6...) <sup>Note 3)</sup>	$25 + 35 (n-2)$ (n = 2, 3, 4, 5...)
<b>D-M9□WV</b> <b>D-M9□AV</b>	10	20	35	$20 + 35 \frac{(n-2)}{2}$ (n = 2, 4, 6...) <sup>Note 3)</sup>	$35 + 35 (n-2)$ (n = 2, 3, 4, 5...)
<b>D-C7□</b> <b>D-C80</b>	5	20	60	$20 + 45 \frac{(n-2)}{2}$ (n = 2, 4, 6...) <sup>Note 3)</sup>	$60 + 45 (n-2)$ (n = 2, 3, 4, 5...)
<b>D-H7□</b> <b>D-H7□W</b> <b>D-H7BA</b> <b>D-H7NF</b>	10	25	70	$25 + 45 \frac{(n-2)}{2}$ (n = 2, 4, 6...) <sup>Note 3)</sup>	$70 + 45 (n-2)$ (n = 2, 3, 4, 5...)
<b>D-C73C</b> <b>D-C80C</b> <b>D-H7C</b>	5	30	80	$30 + 50 \frac{(n-2)}{2}$ (n = 2, 4, 6...) <sup>Note 3)</sup>	$80 + 50 (n-2)$ (n = 2, 3, 4, 5...)
<b>D-B5□</b> <b>D-B64</b> <b>D-G5□</b> <b>D-K59□</b>	5	25	70	$25 + 50 \frac{(n-2)}{2}$ (n = 2, 4, 6...) <sup>Note 3)</sup>	$70 + 50 (n-2)$ (n = 2, 3, 4, 5...)
<b>D-B59W</b>	10	30	75	$30 + 50 \frac{(n-2)}{2}$ (n = 2, 4, 6...) <sup>Note 3)</sup>	$75 + 50 (n-2)$ (n = 2, 3, 4, 5...)

Note 3) When "n" is an odd number, an even number that is one larger than this odd number is used for the calculation.

Note 1) Auto switch mounting

Auto switch model	With 2 auto switches	
	Different surfaces	Same surface
	 <p>Correct auto switch mounting position is 3.5 mm from the back face of the switch holder.</p>	 <p>The auto switch is mounted by slightly displacing it in a direction (cylinder tube circumferential exterior) so that the auto switch and lead wire do not interfere with each other.</p>
<b>D-M9□</b> <b>D-M9□W</b>	Less than 20 stroke <sup>Note 2)</sup>	Less than 55 stroke <sup>Note 2)</sup>
<b>D-M9□A</b>	Less than 25 stroke <sup>Note 2)</sup>	Less than 60 stroke <sup>Note 2)</sup>
<b>D-A9□</b>	—	Less than 50 stroke <sup>Note 2)</sup>

Note 2) Minimum stroke for auto switch mounting in types other than those mentioned in Note 1.

REA

REB

REC

Smooth

Low Speed

MQ

RHC

RZQ

D-□

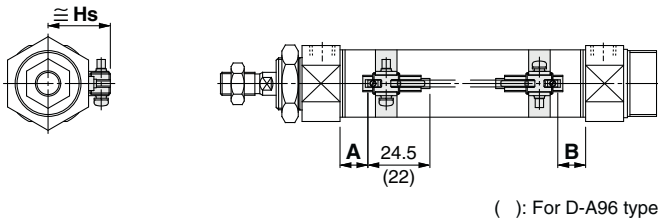
-X□

# Auto Switch Mounting 2

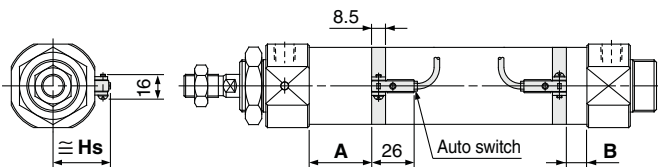
## Auto Switch Proper Mounting Position (Detection at Stroke End) and Its Mounting Height

### Reed auto switch

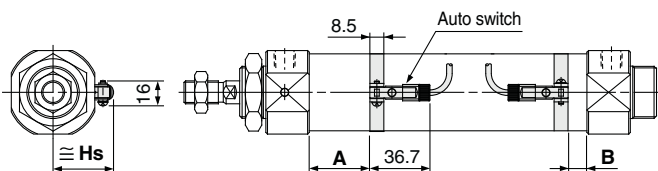
#### D-A9□



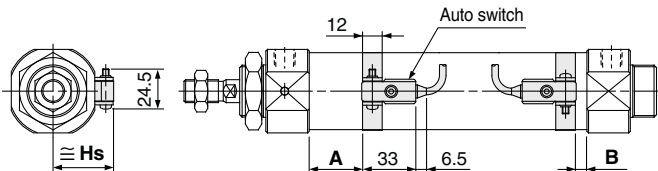
#### D-C7□, C80



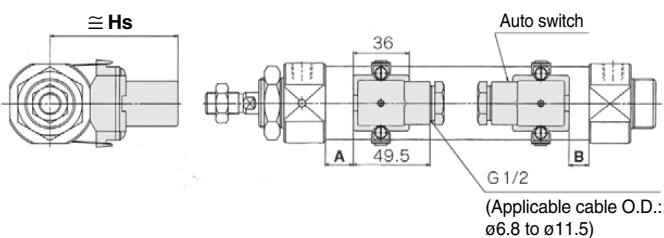
#### D-C73C, C80C



#### D-B5□, B64, B59W

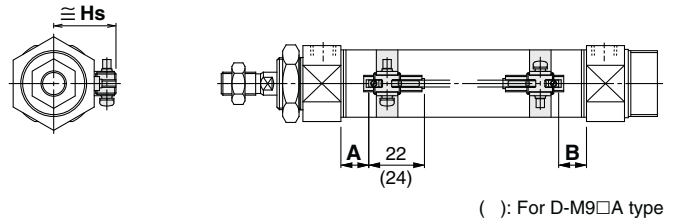


#### D-A44

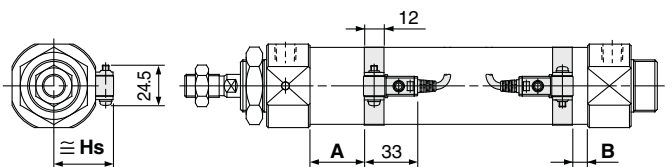


### Solid state auto switch

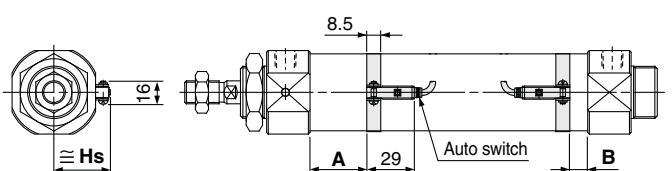
#### D-M9□ D-M9□A D-M9□W



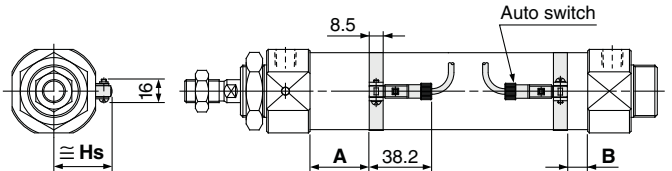
#### D-G5NT



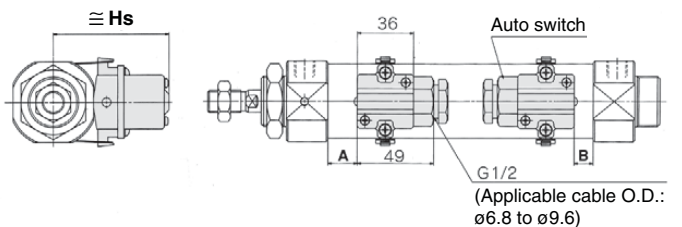
#### D-H7□, H7□W, H7NF, H7BA



#### D-H7C



#### D-A3□, G39, K39



**Auto Switch Proper Mounting Position (Detection at Stroke End) and Its Mounting Height**

**Auto Switch Proper Mounting Position**

(mm)

Auto Switch model Bore size (mm)	D-M9□(V) D-M9□W(V) D-M9□A(V)		D-A9□(V)		D-C7/C8 D-C73C D-C80C		D-B5 D-B6		D-B59W		D-A3□ D-G39 D-K39 D-A44		D-H7□ D-H7C D-H7□W D-H7BA D-H7NF		D-G5NT	
	A	B	A	B	A	B	A	B	A	B	A	B	A	B	A	B
20	59.5	34	55.5	30.5	56	31	50	25	53	28	49.5	24.5	55	30	51.5	26.5
25	59.5	34	55.5	30.5	56	31	50	25	53	28	49.5	24.5	55	30	51.5	26.5
32	63	40	59	36	59.5	36.5	53.5	30.5	56.5	33.5	53	30	58.5	35.5	55	32
40	73.5	42.5	69.5	38.5	70	39	64	33	67	36	63.5	32.5	69	38	65.5	34.5

Note) Adjust the auto switch after confirming the operating conditions in the actual setting.

**Auto Switch Mounting Height**

(mm)

Auto Switch model Bore size (mm)	D-M9□(V) D-M9□W(V) D-M9□A(V) D-A9□(V)		D-C7/C8 D-H7□ D-H7□W D-H7NF D-H7BA		D-B5□ D-B64 D-B59W D-G5NT D-H7C		D-C73C D-C80C		D-A3□ D-G39 D-K39		D-A44	
	Hs	Hs	Hs	Hs	Hs	Hs	Hs	Hs	Hs	Hs	Hs	
20	25	24.5	27.5	27	62	72						
25	27.5	27	30	29.5	64.5	74.5						
32	31	30.5	33.5	33	68	78						
40	35.5	35	38	37.5	72.5	82.5						

REA

REB

REC

Smooth

Low Speed

MQ

RHC

RZQ

D-□

-X□

# Auto Switch Mounting 3

## Operating Range

Auto switch model	Bore size (mm)			
	20	25	32	40
D-A9□	7	6	8	8
D-M9□ D-M9□W	4	4	5	4
D-C7□/C80 D-C73C/C80C	8	10	9	10
D-B5□/B64	8	10	9	10
D-B59W	13	13	14	14
D-H7□/H7□W D-H7NF/H7BA	4	4	4.5	5
D-H7C	7	8.5	9	10
D-A3□/D-A44	9	10	9	10
D-G39/D-K39	8	9	9	9
D-G5NT	4	4	4.5	5
D-G5NB	35	40	40	45

\* Since this is a guideline including hysteresis, not meant to be guaranteed. (assuming approximately ±30% dispersion.)  
There may be the case it will vary substantially depending on an ambient environment.

## Auto Switch Mounting Bracket Part No.

Auto switch model	Bore size (mm)			
	ø20	ø25	ø32	ø40
D-A9□(V) D-M9□(V) D-M9□W(V) D-M9□A(V)	BMA3-020	BMA3-025	BMA3-032	BMA3-040
D-C7□/C80 D-C73C D-C80C D-H7□ D-H7□W D-H7BA D-H7NF	BMA2-020A	BMA2-025A	BMA2-032A	BMA2-040A
D-B5□/B64 D-B59W D-G5□/K59 D-G5□W/K59W D-G5BA/G59F D-G5NT D-G5NB	BA-01	BA-02	BA-32	BA-04

- Note 1) Set part number which includes the auto switch mounting band (BM2-□□□A) and the holder kit (BJ5-1/Switch bracket: Transparent).  
Since the switch bracket (made from nylon) are affected in an environment where alcohol, chloroform, methylamines, hydrochloric acid or sulfuric acid is splashed over, so it cannot be used. Please consult SMC regarding other chemicals.
- Note 2) Set part number which includes the auto switch mounting band (BM2-□□□AS/Stainless steel screw) and the holder kit (BJ4-1/Switch bracket: White).
- Note 3) For the D-M9□A(V) type auto switch, do not install the switch bracket on the indicator light.

### [Mounting screw set made of stainless steel]

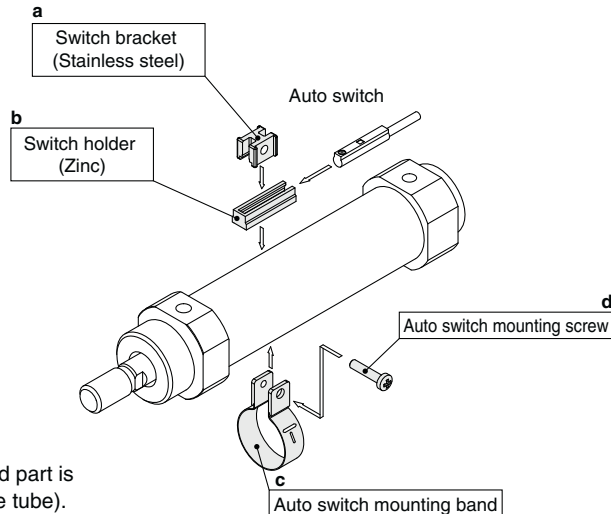
The following set of mounting screws made of stainless steel is available. Use it in accordance with the operating environment.  
(Please order the auto switch mounting bracket separately, since it is not included.)

BBA4: For D-C7/C8/H7

Note 4) Refer to page 1048 for details of the BBA4.

The above stainless steel screws are used when a cylinder is shipped with the D-H7BA auto switch.

When only an auto switch is shipped independently, the BBA4 is attached.



- BJ□-1 is a set of "a" and "b".
- BM2-□□□A(S) is a set of "c" and "d".  
Band (c) is mounted so that the projected part is on the internal side (contact side with the tube).  
BJ4-1 (Switch bracket: White)  
BJ5-1 (Switch bracket: Transparent)

Other than the applicable auto switches listed in "How to Order", the following auto switches can be mounted.

For detailed specifications, refer to pages 941 to 1067.

Auto switch type	Model	Electrical entry (Fetching direction)	Features	Applicable bore size
Reed	D-C73, C76	Grommet (In-line)	—	ø20 to ø40
	D-C80		Without indicator light	
	D-B53		—	ø20 to ø40
Solid state	D-H7A1, H7A2, H7B		—	ø20 to ø40
	D-H7NW, H7PW, H7BW		Diagnostic indication (2-color indicator)	
	D-G5NT		With timer	ø20 to ø40

- \* For solid state auto switches, auto switches with a pre-wired connector are also available. Refer to pages 1014 and 1015 for details.  
\* Normally closed (NC = b contact) solid state auto switches (D-M9□E(V)) are also available. Refer to page 1592-1 for details.