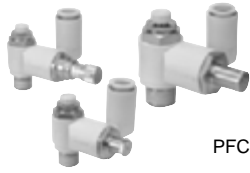




# 节气阀 (带快换接头) PFC阀/ASR系列 QFC阀/ASQ系列



PFC阀/ASR系列



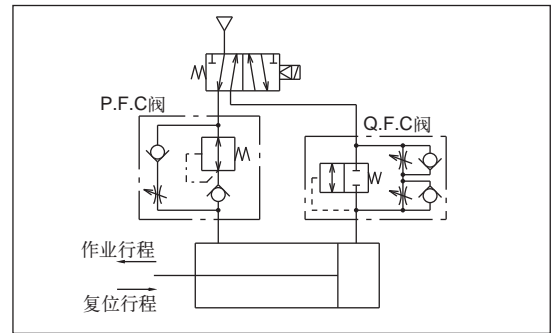
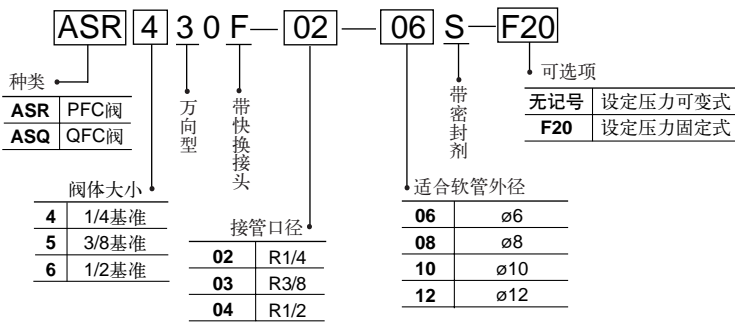
QFC阀/ASQ系列

## 共同规格

最高使用压力	1.0MPa	
最低使用压力	0.1MPa	
设定压力	可变速	0.1~0.3MPa
	固定式	0.2MPa
环境与流体温度	-5~60℃ (但未冻结)	
调整流量圈数	10圈	
适合软管材质	尼龙、软尼龙、聚氨酯	

型号		接管口径	适合软管外径			
PFC阀	QFC阀		ø6	ø8	ø10	ø12
ASR430F-02	ASQ430F-02	R1/4	●	●	●	
ASR530F-02	ASQ530F-02	R1/4	●	●	●	●
ASR530F-03	ASQ530F-03	R3/8	●	●	●	●
ASR630F-03	ASQ630F-03	R3/8			●	●
ASR630F-04	ASQ630F-04	R1/2			●	●

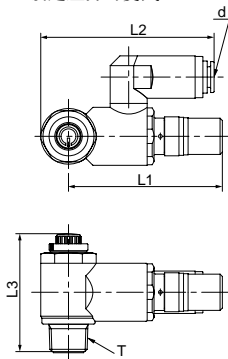
## 型号表示方法



能节气25%。

## 外形尺寸图 (毫米)

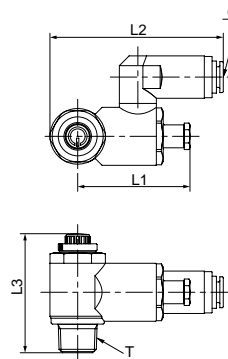
PFC阀/ASR系列  
设定压力可变速



型号	d <sup>(注)</sup>	T	L1	L2	L3	
					MAX.	MIN.
ASR430F-02-06S	6			67.7		
ASR430F-02-08S	8	R1/4	63.6	68.7	50.6	45.6
ASR430F-02-10S	10			63.8		
ASR530F-02-06S	6			75		
ASR530F-02-08S	8	R1/4	67.2	76	55.9	50.9
ASR530F-02-10S	10			71.1		
ASR530F-02-12S	12			72.9		
ASR530F-03-06S	6			75		
ASR530F-03-08S	8	R3/8	67.2	76	57.5	52.5
ASR530F-03-10S	10			71.1		
ASR530F-03-12S	12			72.9		
ASR630F-03-10S	10	R3/8	86.2	77.7	67.6	60.1
ASR630F-03-12S	12			79.5		
ASR630F-04-10S	10	R1/2	86.2	77.7	71.1	63.6
ASR630F-04-12S	12			79.5		

注) 指适合管子外径。

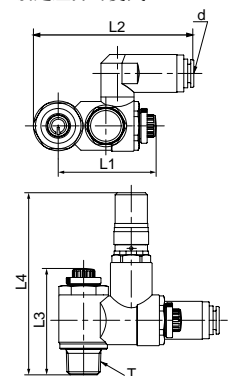
设定压力固定式



型号	d <sup>(注)</sup>	T	L1	L2	L3	
					MAX.	MIN.
ASR430F-02-06S-F20	6			67.7		
ASR430F-02-08S-F20	8	R1/4	45.4	68.7	50.6	45.6
ASR430F-02-10S-F20	10			63.8		
ASR530F-02-06S-F20	6			75		
ASR530F-02-08S-F20	8	R1/4	49.0	76	55.9	50.9
ASR530F-02-10S-F20	10			71.1		
ASR530F-02-12S-F20	12			72.9		
ASR530F-03-06S-F20	6			75		
ASR530F-03-08S-F20	8	R3/8	49.0	76	57.5	52.5
ASR530F-03-10S-F20	10			71.1		
ASR530F-03-12S-F20	12			72.9		
ASR630F-03-10S-F20	10	R3/8	65.2	77.7	67.6	60.1
ASR630F-03-12S-F20	12			79.5		
ASR630F-04-10S-F20	10	R1/2	65.2	77.7	71.1	63.6
ASR630F-04-12S-F20	12			79.5		

注) 指适合管子外径。

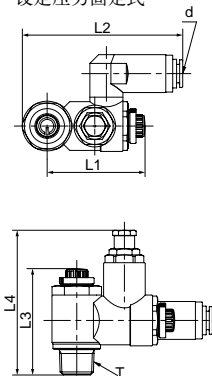
QFC阀/ASQ系列  
设定压力可变速



型号	d <sup>(注)</sup>	T	L1		L2	L3		L4
			MAX.	MIN.		MAX.	MIN.	
ASQ430F-02-06S	6				71.6			
ASQ430F-02-08S	8	R1/4	49.4	44.4	72.6	50.6	45.6	88.8
ASQ430F-02-10S	10				67.8			
ASQ530F-02-06S	6				77.8			
ASQ530F-02-08S	8	R1/4	53.6	48.6	78.8	55.9	50.9	92.2
ASQ530F-02-10S	10				73.8			
ASQ530F-02-12S	12				75.6			
ASQ530F-03-06S	6				77.8			
ASQ530F-03-08S	8	R3/8	53.6	48.6	78.8	57.5	52.5	93.8
ASQ530F-03-10S	10				73.8			
ASQ530F-03-12S	12				75.6			
ASQ630F-03-10S	10	R3/8	74.3	66.8	89.7	67.6	60.1	107.9
ASQ630F-03-12S	12				91.5			
ASQ630F-04-10S	10	R1/2	74.3	66.8	89.7	71.1	63.6	111.4
ASQ630F-04-12S	12				91.5			

注) 指适合管子外径。

设定压力固定式



型号	d <sup>(注)</sup>	T	L1		L2	L3		L4
			MAX.	MIN.		MAX.	MIN.	
ASQ430F-02-06S-F20	6				71.6			
ASQ430F-02-08S-F20	8	R1/4	49.4	44.4	72.6	50.6	45.6	88.8
ASQ430F-02-10S-F20	10				67.8			
ASQ530F-02-06S-F20	6				77.8			
ASQ530F-02-08S-F20	8	R1/4	53.6	48.6	78.8	55.9	50.9	92.2
ASQ530F-02-10S-F20	10				73.8			
ASQ530F-02-12S-F20	12				75.6			
ASQ530F-03-06S-F20	6				77.8			
ASQ530F-03-08S-F20	8	R3/8	53.6	48.6	78.8	57.5	52.5	93.8
ASQ530F-03-10S-F20	10				73.8			
ASQ530F-03-12S-F20	12				75.6			
ASQ630F-03-10S-F20	10	R3/8	74.3	66.8	89.7	67.6	60.1	107.9
ASQ630F-03-12S-F20	12				91.5			
ASQ630F-04-10S-F20	10	R1/2	74.3	66.8	89.7	71.1	63.6	111.4
ASQ630F-04-12S-F20	12				91.5			

注) 指适合管子外径。