

# 5.0 MPa Silencer Series VCHN

35 dB(A) noise reduction

(At supply pressure of 4.0 MPa, back pressure 2.0 MPa)

\* 45 dB(A) noise reduction model can be "Made to Order".

1/10 Clogging reduction  
(SMC comparison)

Double-layer sound absorbing material  
with different filtration reduces clogging.

PAT.

Standard integrated relief valve

The relief valve will activate when  
the silencer's internal pressure  
exceeds 1.8 MPa.

\* The error indicator and the pressure switch, etc.  
can be mounted as "Made to Order".

Improved maintenance

By removing a bolt, the sound  
absorbing material can be replaced  
without removing the silencer.

30-40% reduction in freezing  
(SMC comparison) (Optional)

Freezing is reduced by a high pressure  
sleeve and quick exhaust.

## How to Order

VCHN    3 - 06

Option

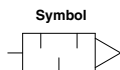
Nil	None
F	With freeze reduction

Port size

Symbol	Port size	VCHN <span style="border: 1px solid black; padding: 2px;">□</span> 3	VCHN <span style="border: 1px solid black; padding: 2px;">□</span> 4
06	R3/4	●	
10	R1	●	●
12	R1-1/4		●
14	R1-1/2		●

Body size

3
4

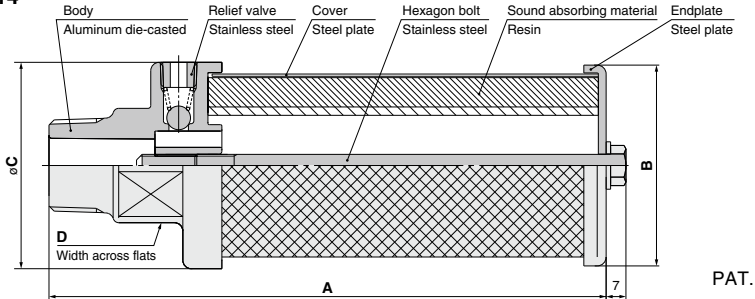


## Specifications

Model	VCHN3		VCHNF3		VCHN4			VCHNF4		
Fluid	Air, Inert gas									
Max. operating pressure (MPa)	5.0 (Solenoid valve inlet pressure)									
Relief valve unlocking pressure (MPa)	1.8									
Port size	R3/4	R1	R3/4	R1	R1	R1-1/4	R1-1/2	R1	R1-1/4	R1-1/2
Effective area (mm <sup>2</sup> )	200	280	160	180	280	370	370	180	320	320
Sound absorbing material effective area (Single) (mm <sup>2</sup> )	420					500				
Fluid temperature (°C)	5 to 80									
Ambient temperature (°C)	5 to 80									
Noise reduction dB(A)	35 (Supply pressure 4.0 MPa, Back pressure 2.0 MPa)									

## Construction/Dimensions

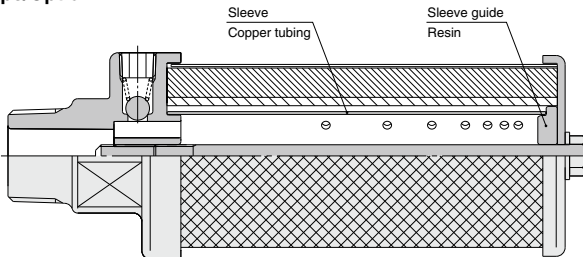
### VCHN<sub>4</sub>-06 to 14



PAT.

### Freeze reduction type/Option

### VCHNF<sub>4</sub>-06 to 14



AN  
VCHN  
AMC  
AMV  
AMP

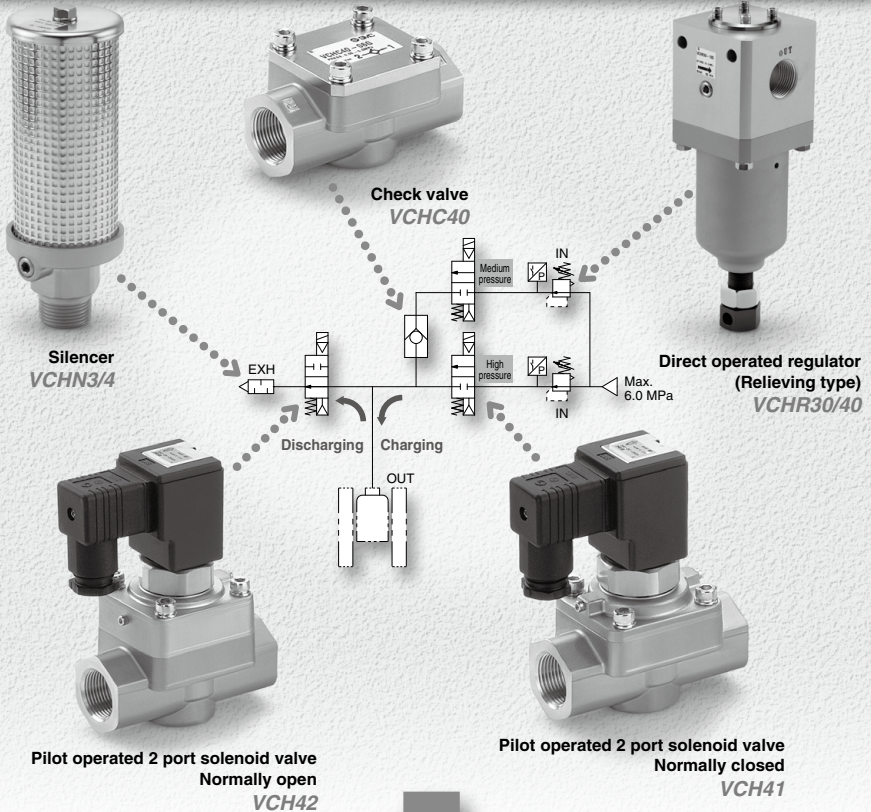
(mm)

Model	Port size (R)	A	B	C	D	Weight (g)
VCHN3-06	3/4	200	ø72	ø74	41	590
VCHNF3-06	3/4	200	ø72	ø74	41	710
VCHN3-10	1	200	ø72	ø74	41	605
VCHNF3-10	1	200	ø72	ø74	41	725
VCHN4-10	1	230	ø72	ø74	41	665
VCHNF4-10	1	230	ø72	ø74	41	810
VCHN4-12	1-1/4	240	ø72	ø74	54	765
VCHNF4-12	1-1/4	240	ø72	ø74	54	910
VCHN4-14	1-1/2	240	ø72	ø74	54	790
VCHNF4-14	1-1/2	240	ø72	ø74	54	935

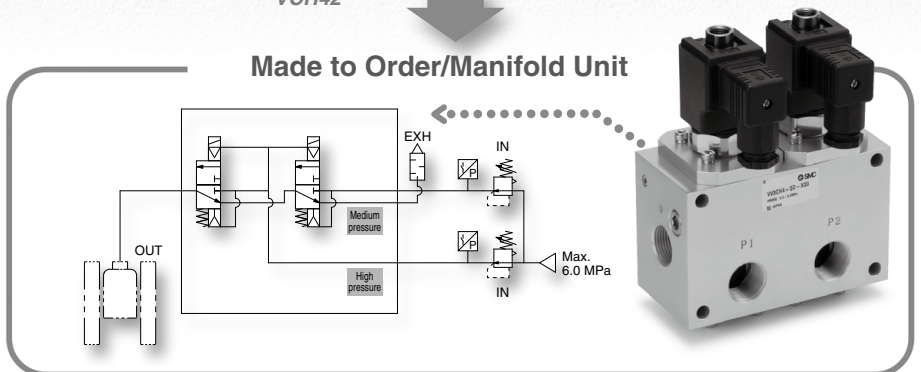
# 5.0 MPa

# Pneumatic

Applications included air-blowing, charging fluid into a vessel, or discharging (Blow-molding equipment, etc.)



**Made to Order/Manifold Unit**

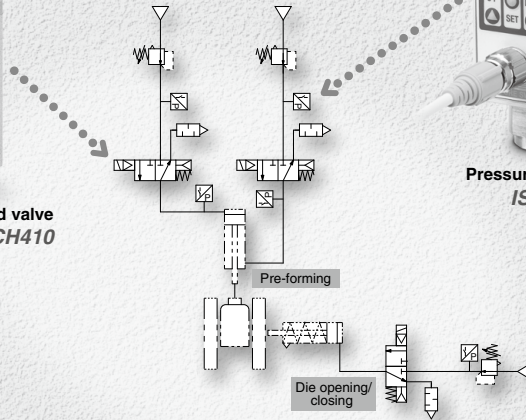


# Equipment Variation



Pilot operated 3 port solenoid valve  
VCH410

Example of driving a cylinder



Pressure switch  
ISE75(H)

	Description	Features	Maximum operating pressure (MPa)	Series	Port size						Page	
					1/4	1/2	3/4	1	1 1/4	1 1/2		
	Pilot operated 2 port solenoid valve	<b>Service life: 10 million cycles</b> Adopting a polyurethane elastomer poppet in a valve seat. Improved durability under a high pressure environment.	5.0	VCH41(N.C.)			●	●			Best Pneumatics No.7	
	VCH42(N.O.)					●	●					
	Check valve		5.0	VCHC40				●	●			Best Pneumatics No.7
	Pilot operated 3 port solenoid valve		5.0	VCH410			●	●	●			Best Pneumatics No.7
	Direct operated regulator (Relieving type)		Inlet pressure 6.0 Set pressure 0.5 to 5.0	VCHR30				●	●			Best Pneumatics No.5
	Silencer	<b>Noise reduction 35 dB(A)</b> (At supply pressure 4.0 MPa, back pressure 2.0 MPa) <b>Clogging-reduction with double-layer construction</b>	5.0 (Relief valve release pressure: 1.8 MPa)	VCHN3			●	●			P.680	
				VCHN4				●	●	●		

AN  
VCHN  
AMC  
AMV  
AMP

## Related Equipment

	Pressure switch	<b>2-color display Metal body</b> (Aluminum die-cast)	10.0 15.0	ISE75(H)	●						P.813
--	-----------------	--	--------------	----------	---	--	--	--	--	--	-------

## Made to Order

1 6.0 MPa pilot operated regulator (Air operated type) ———— ..... Best Pneumatics No.5

2 22.0 MPa 2 port air operated valve ———— ..... Best Pneumatics No.7