

⚠ Contact our sales office for delivery dates and prices as this is a special model.



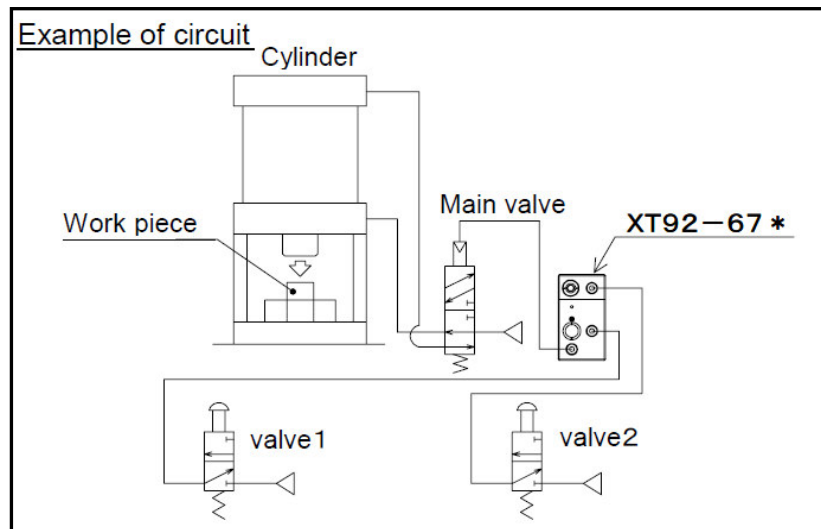
P.G.Information (Specialized product)

SP023M-068E  
P: HR

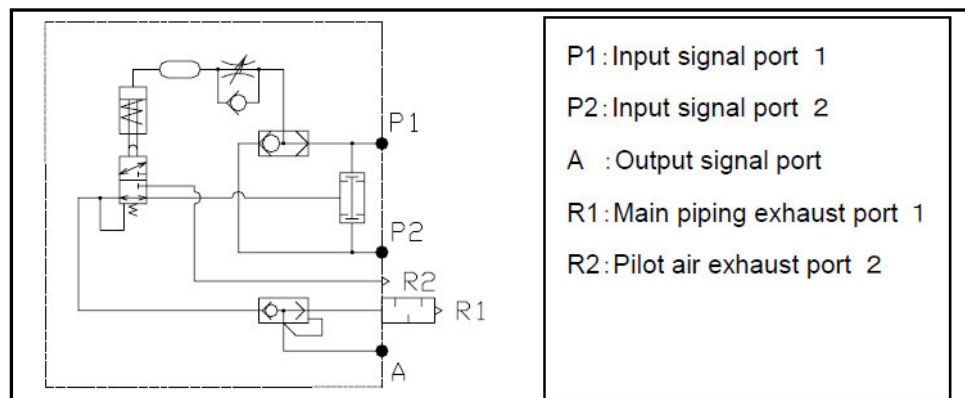
# Air Operated Valve Both hands Operation Unit XT92-67\*

SMCCorporation  
4-14-1, SOTO-KANDA, CHIYODA-KU,  
TOKYO 101-0021, JAPAN  
URL: <http://www.smcworld.com>

- Application: Safety measure so that hands will not be caught in press machine or other machines.
- Feature1 : Only simultaneous signal inputs within 0.5s from two lines can output signals.
- Feature2 : Possibility to change the timing for signal inputs from two lines.
- Application Examples : Press fitting, Clamping, Pressing



## Internal Circuit Diagram



## ■ Specifications

|   |                          |
|---|--------------------------|
| Fluid   | Air                      |
| Maximum operating pressure                          | 0.8MPa                   |
| Minimum operating pressure                          | 0.25MPa                  |
| Ambient and fluid temperature                       | -5 to 60°C (No freezing) |
| Cv factor (Exhaust end)                             | 0.25                     |
| Adjustable range of both hands operation timing (*) | Within 0.5s              |
| Adjusting mean of both hands operation timing       | Needle operation         |
| port size(P1, P2, A)                                | 1/8 (Rc, NPT, G)         |
| Mass  | 300g                     |

\*) The adjustment range of the needle varies depending on the operating pressure and piping conditions.

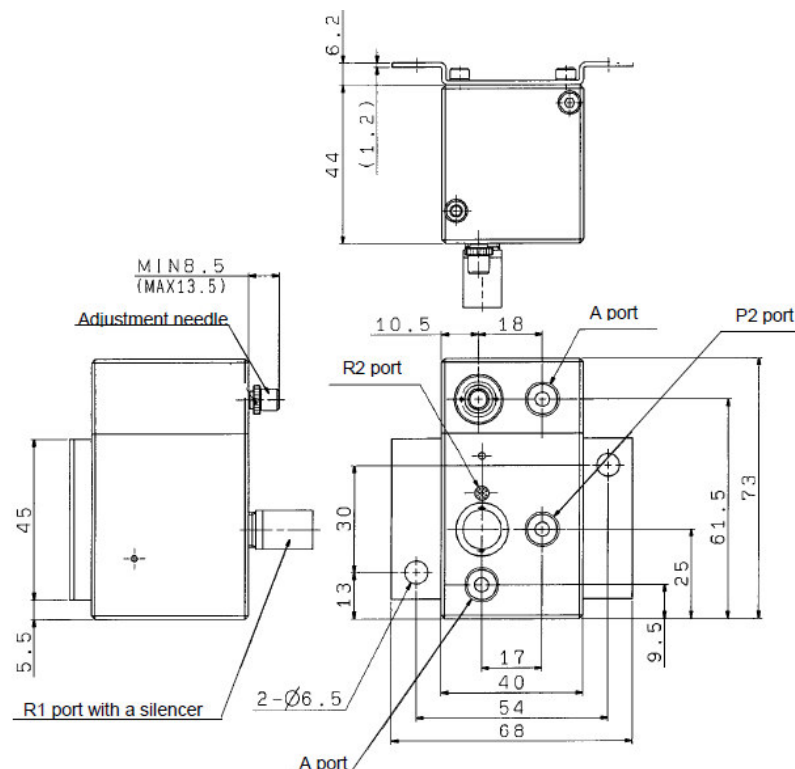
## ■ How to Order

XT92 - 67

Piping Port type

|   |        |
|---|--------|
| - | Rc1/8  |
| N | NPT1/8 |
| F | G1/8   |

## ■ Dimensions: mm



### **Precautions**

- This product does not guarantee the absolute safety. It can bring hazardous situation depending on the usage. Please add the safety device in the possible unsafe situation.
- This product doesn't have push button. Please use the signal input valve, such as mechanical valve with push button according to the application.



Caution: To ensure the safest possible operation of this product, please be sure to thoroughly read the "**Safety Instructions**" in our "Best Pneumatics" catalog before use.

©2002 SMC Corporation All Rights Reserved