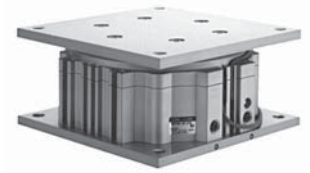


Series 10-MGF

Guide table ø40, ø63, ø100

How to Order



10 - M G F 63 - 50 - Y59B

● **Clean series**

10	Relief type
----	-------------

● **Bore size (mm)**

● **Port type**

Symbol	Type	Bore size
Nil	Rc	ø40, ø63, ø100
TN	NPT	
TF	G	

● **Cylinder stroke (mm)**

● **Type of auto switch**

Reed switch	Z73
Solid state switch	Y59A, Y59B

● **Number of auto switches**

Nil	2 pcs.
S	1 pc.

Model

Relief type	Model	Bore size (mm)	Port size	Lubrication	Action	Standard stroke* (mm)	Auto switch mounting	Cushion	
								Rubber	Air
	10-MGF40	40	1/8	Non-lube	Double acting	30, 50, 75, 100	○	○	-
	10-MGF63	63	1/4					(Both sides)	
	10-MGF100	100							

* Non-standard intermediate strokes (in 5 mm increments) are available by attaching a spacer of 5, 10, 15, 20 or 25 mm width.

Specifications

	Bore size(mm)	
Item		40/63/100
Proof pressure		1.5MPa
Max. operating pressure		1.0MPa
Min. operating pressure		0.1MPa
Ambient and fluid temperature		-10 to 60°C (With no freezing)
Piston speed		20 to 200 mm/s
Stroke length tolerance		$^{+1.0}_0$ mm
Grease		Fluorine grease
Particle generation grade (Refer to front matter pages 13 to 22 for details.)		Grade 2

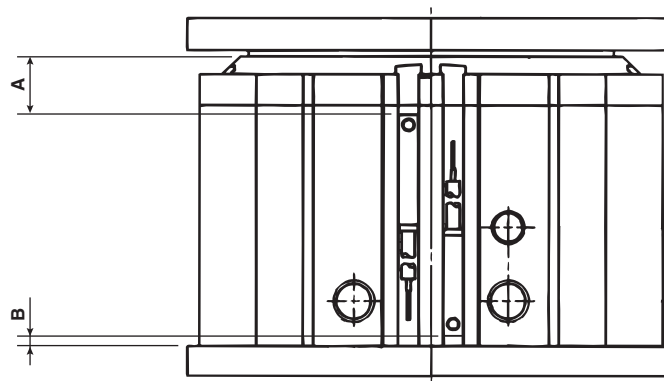
Auto switch specifications (Refer to Best Pneumatics catalog for detailed specifications and auto switches not in the following table.)

Style	Auto switch part no.	Load voltage	Load current range	Indicator light	Application
Reed switch	D-Z73	24 VDC, 100 VAC	5 to 40mA, 5 to 20mA	○	Relay, PLC
Solid state switch	2-wire type D-Y59B	24 VDC (10 to 28 VDC)	5 to 40mA	○	24 VDC Relay, PLC
	3-wire type D-Y59A	28 VDC or less	40mA or less	○	IC circuit, Relay, PLC

Refer to applicable auto switch list — Page 182.

PLC: Programmable Logic Controller

Auto switches / Proper mounting position for stroke end detection



Proper mounting position (mm)

Bore size	A	B
40	16	0
63	27.5	0
100	32.5	0

Note) The above mentioned values are indicated as a guide for auto switch mounting position for stroke end detection. When actually mounting an auto switch, adjust the position after confirming the operating state of the auto switch.

Air cylinder

Rotary actuator

Air gripper

Directional control valve

Flow control equipment

Filter, Pressure control equipment

Fittings & Tubing

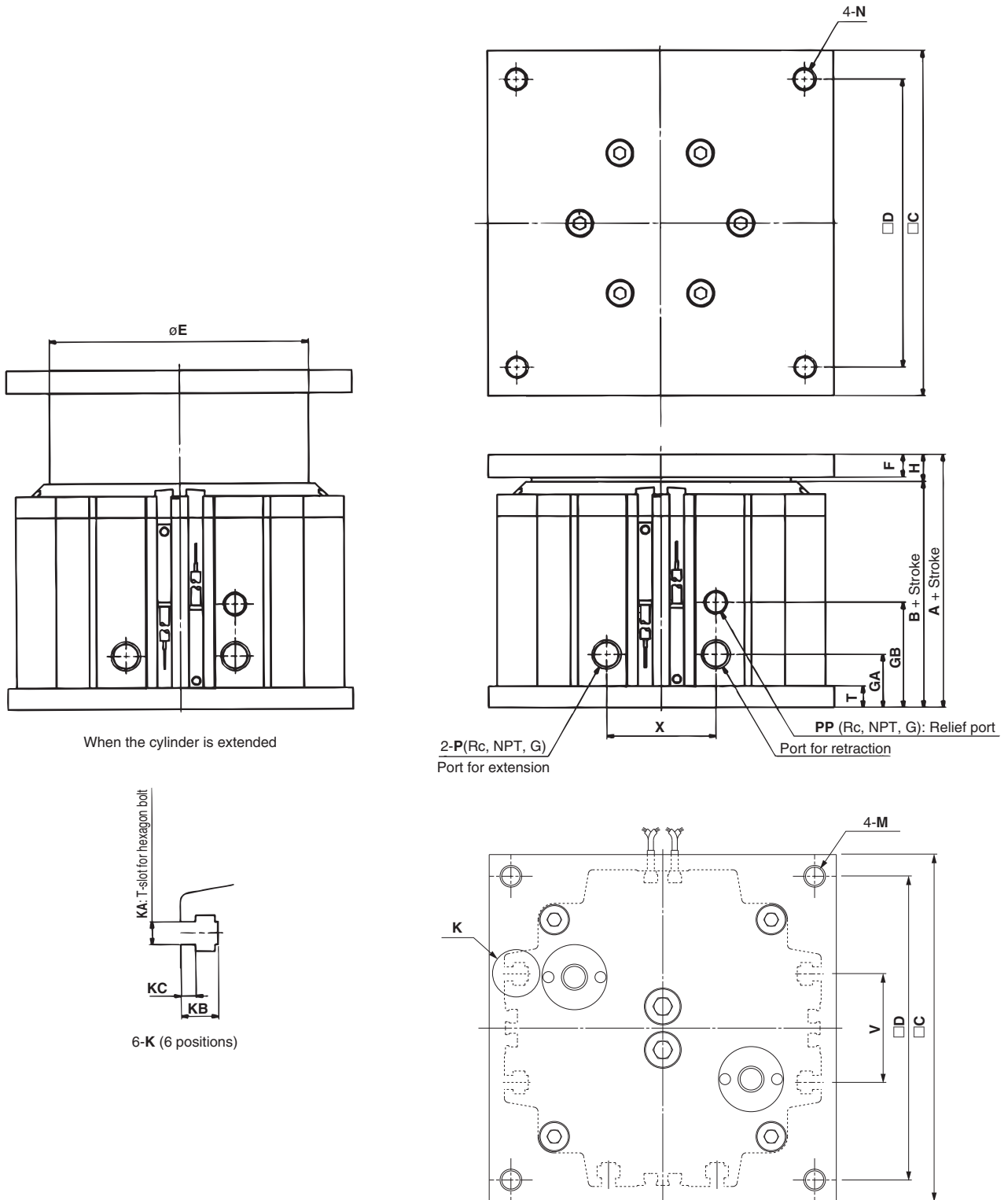
Air preparation equipment

Pressure switch

Clean gas filter

Dimensions

10-MGF40/63/100



Bore size	Standard stroke	A	B	C	D	E	F	GA	GB	H	KA	KB	KC	M	N	P	PP	T	V	X
40		58	48.5	120	100	90	8	18.5	36.5	9.5	M5	8.7	3.5	M8 x 1.25	M8 x 1.25	1/8	1/8	7.5	40	38
63	30, 50, 75, 100	73	61.5	160	140	120	10	20	38	11.5	M6	11	4	M10 x 1.5	M10 x 1.5	1/4	1/8	9	50	46
100		78	66.5	200	170	160	10	20	38	11.5	M6	11	4	M12 x 1.75	M12 x 1.75	1/4	1/8	9	70	46

(mm)