

# Indicator insert MCL, MCLZ, MFL, MFLZ

**FESTO**



## Type code

001	Series
<b>M</b>	Indicator insert

002	Electrical connection
<b>C</b>	Type A, plug, to DIN EN 175301-803
<b>F</b>	Type B, as per industry standard (11 mm)

003	Function
<b>L</b>	Indicator insert

004	Additional function
	None
<b>Z</b>	Protective circuit

005	Operating voltage
	24 V DC/AC with protective circuit
<b>24DC/AC</b>	24 V DC/AC
<b>230AC</b>	230 V AC

## Datasheet

### General technical data

Electrical connection	Type A, Type B, Plugs, To DIN EN 175301-803, To industry standard (11 mm)
-----------------------	---

### Technical data – Electrical

Nominal operating voltage AC	24 V	230 V
Nominal operating voltage DC	24 V	–
Permissible voltage fluctuations	+/- 15%	-20% / +15%
Mains frequency	0 ... 60 Hz	50 ... 60 Hz

### Materials

Material housing	PA6 reinforced
LABS (PWIS) conformity	VDMA24364-B2-L

### Operating and environmental conditions

Nominal operating voltage AC	24 V	230 V
Ambient temperature	-20 ... 60°C	
CE mark (see declaration of conformity) <sup>1)</sup>	–	To EU Low Voltage Directive
CE marking (see declaration of conformity) <sup>2)</sup>	–	To UK regulations for electrical equipment
Degree of protection	IP65, To IEC 60529	

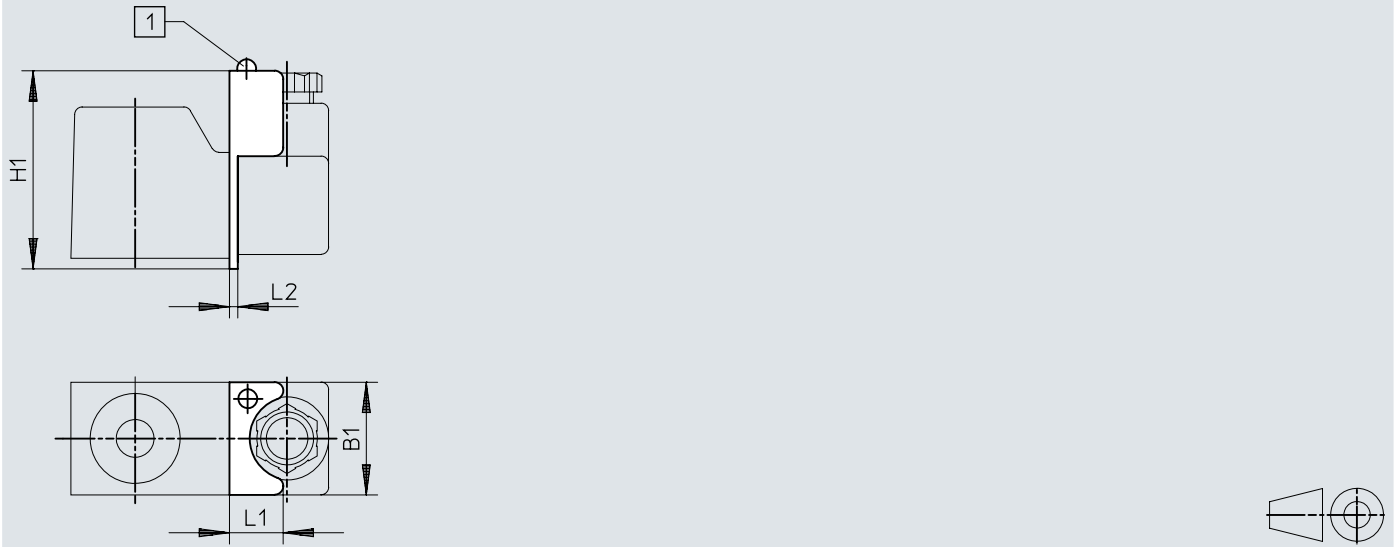
1) More information [www.festo.com/catalogue/... Support/Downloads](http://www.festo.com/catalogue/... Support/Downloads).

2) More information [www.festo.com/catalogue/... Support/Downloads](http://www.festo.com/catalogue/... Support/Downloads).

## Dimensions

### Dimensions – Electrical connection type A

Download CAD data → [www.festo.com](http://www.festo.com)

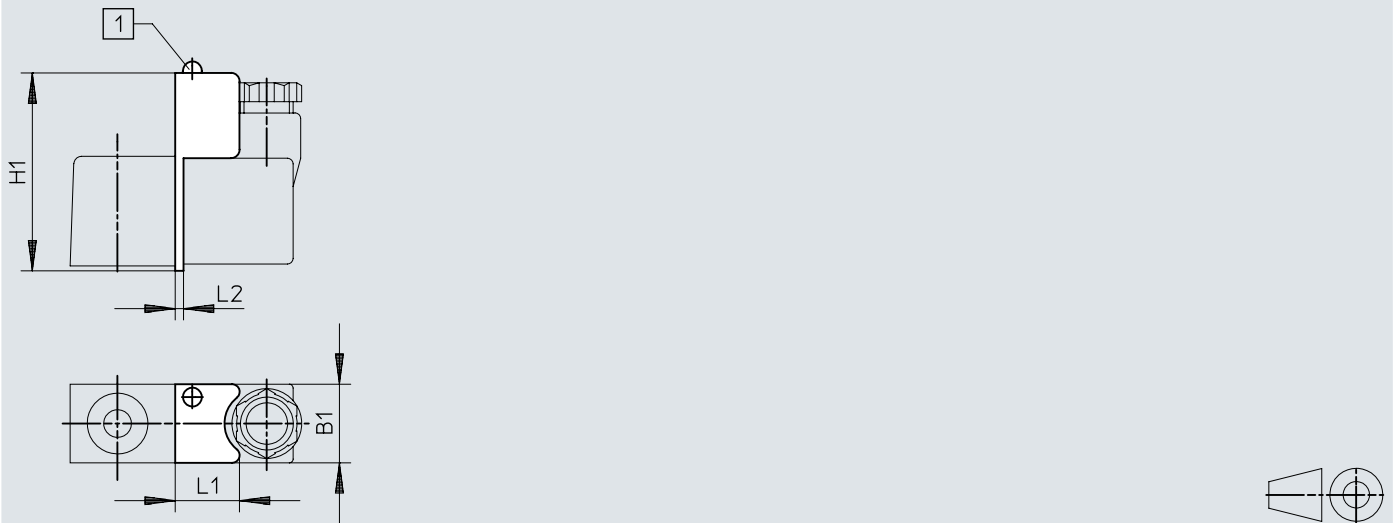


[1] LED

	B1	H1	L1	L2
MCL-24DC/AC	29,8	52,7	14,2	2,2
MCL	29,8	52,7	14,2	2,2
MCL-230AC	29,8	52,7	14,2	2,2

## Dimensions


## Dimensions – Electrical connection type B

Download CAD data → [www.festo.com](http://www.festo.com)

[1] LED

	B1	H1	L1	L2
MFL-24DC/AC	20,8	51,4	17	1,7
MFLZ-24DC/AC	20,8	51,4	17	1,7
MFL-230AC	20,8	51,4	17	1,7

## Ordering data

Ordering data					
	Electrical connection	Nominal operating voltage AC	Product weight	Part no.	Type
	Type A, Plugs, To DIN EN 175301-803	24 V	12 g	<b>10000</b>	<b>MCL-24DC/AC</b>
	Type B, To industry standard (11 mm)		14 g	<b>12610</b>	<b>MFLZ-24DC/AC</b>
		15 g	<b>10004</b>	<b>MFL-24DC/AC</b>	
	Type A, Plugs, To DIN EN 175301-803	230 V	14 g	<b>10005</b>	<b>MFL-230AC</b>
		24 V	13 g	<b>12611</b>	<b>MCL</b>
		230 V	12 g	<b>10001</b>	<b>MCL-230AC</b>