

标准型

G系列



G27-10-R1



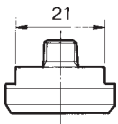
G36-10-01
(带限制指示器)



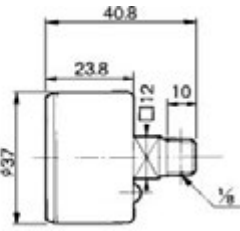
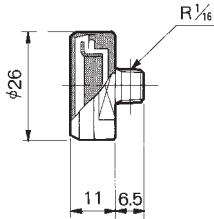
G46-10-02
(带限制指示器)

| 型号 | 最大压力 | 口径 | 适合 |
|-----------|--------|-------------------|---|
| G27-10-R1 | 1MPa | R _{1/16} | AR10·AW10 |
| G27-20-R1 | 2MPa | R _{1/16} | VBA111 ₁ ⁰ |
| G36-2-01 | 0.2MPa | R _{1/8} | AR20·25·30 AW20·30 |
| G36-4-01 | 0.4MPa | R _{1/8} | |
| G36-10-01 | 1MPa | R _{1/8} | |
| G46-2-02 | 0.2MPa | R _{1/4} | AR40·AR40-06 AR50·60 AW40·AW40-06 |
| G46-4-02 | 0.4MPa | R _{1/4} | |
| G46-10-02 | 1MPa | R _{1/4} | |
| G46-15-02 | 1.5MPa | R _{1/4} | |

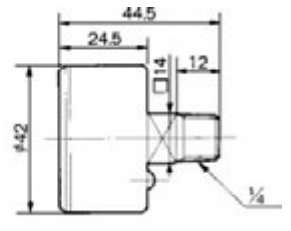
外形尺寸图 (毫米)



G27-10-R1



(带限制指示器)
G36-2-01·G36-4-01
G36-10-01



(带限制指示器)
G46-2-02·G46-4-02
G46-10-02·G46-15-02

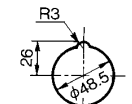
面板安装型

G46 系列

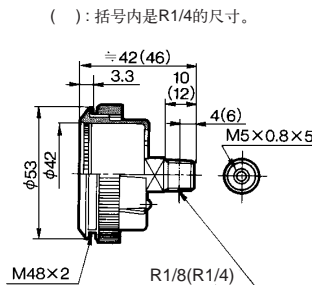
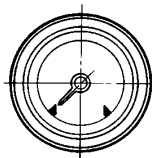
外形尺寸图 (毫米)



G46-10-02M-C



面板开孔
最厚 3.5mm



(): 括号内是R1/4的尺寸。

| 型号 | 最大压力 | 口径 |
|--------------|--------|------------------|
| G46-10-01M-C | 1MPa | R _{1/8} |
| G46-2-02M-C | 0.2MPa | R _{1/4} |
| G46-4-02M-C | 0.4MPa | R _{1/4} |
| G46-10-02M-C | 1MPa | R _{1/4} |
| G46-15-02M-C | 1.5MPa | R _{1/4} |

注) “M” -带内螺纹M5×0.8。
“C” -透明罩不突出,不可取下。