

# MVAA-150 系列

氣動閥



規格：

| 型號     | MVAA-150-4A1        | MVAA-150-4A2 |
|--------|---------------------|--------------|
| 配管口徑代號 | M5                  |              |
| 配管口徑尺寸 | M5×0.8              |              |
| 方口數    | 5口                  |              |
| 使用流體   | 空氣                  |              |
| 使用壓力範圍 | 0~0.8 MPa           |              |
| 耐壓力    | 1 MPa               |              |
| 有效斷面積  | 3.8 mm <sup>2</sup> |              |
| 導引壓力範圍 | 0.15~0.8 MPa        |              |
| 周圍溫度   | -5~+60°C (不凍結)      |              |
| 重量     | 47 g                | 58 g         |

訂購代號：

MVAA - 150 - 4A2

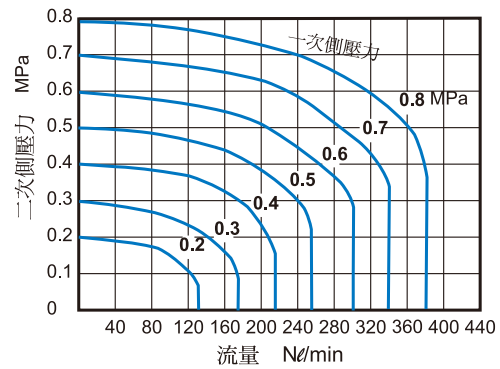
型號

本體寬度

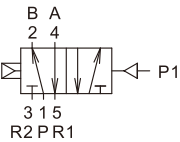
4 : 4方向

A1 : 單動氣壓導引  
A2 : 複動氣壓導引

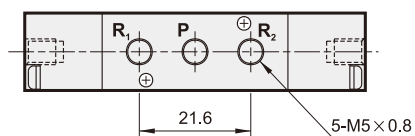
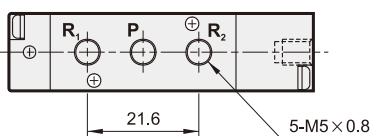
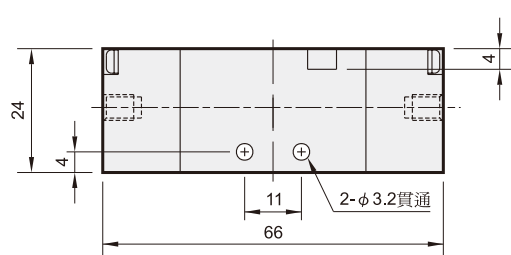
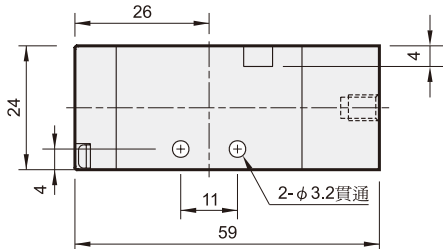
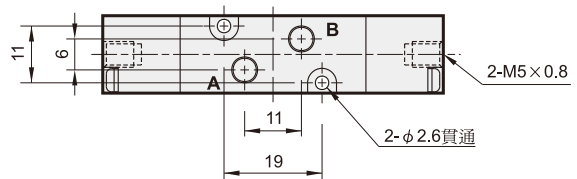
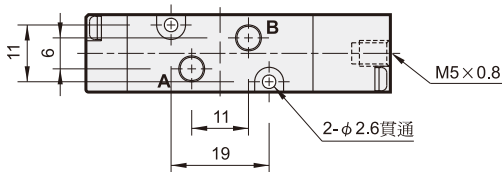
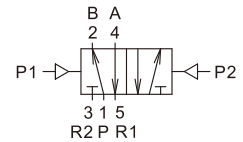
流量特性圖：



MVAA-150-4A1



MVAA-150-4A2



Mindman