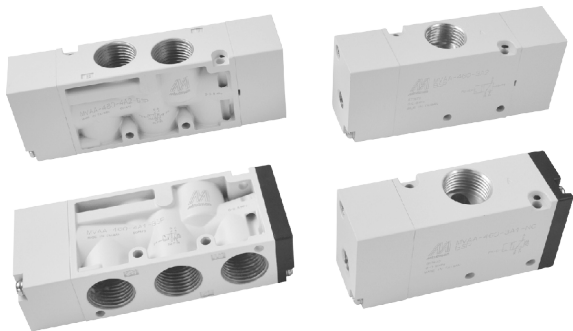


MVAA-460 系列

氣動閥

規格：



型號	MVAA-460-3A1,A2	MVAA-460-4A1,A2	
配管口徑代號	15A		
配管口徑尺寸	G1/2		
方口數	3口	5口	
使用流體	空氣		
使用壓力範圍	0.15~0.8 MPa		
耐壓力	1 MPa		
有效斷面積	50 mm ²		
導引壓力範圍	(0.34 × P + 0.1)~0.8 MPa P: 使用壓力		
周圍溫度	-5~+60℃ (不凍結)		
重量	300 g	326 g	275 g 338 g

訂購代號：

MVAA - 460 - 4A2 - NC - NPT

型號

本體寬度

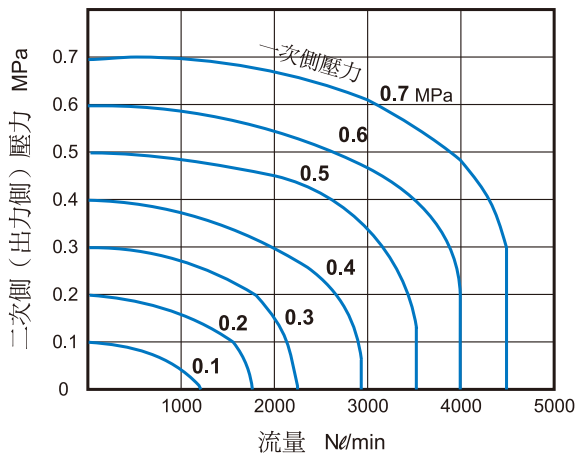
3 : 3方向
4 : 4方向

NC : 常閉型
NO : 常開型
(僅適用3A1)

A1 : 單動氣壓導引
A2 : 複動氣壓導引

配管口螺牙
無 : G牙
NPT : NPT牙

流量特性圖：

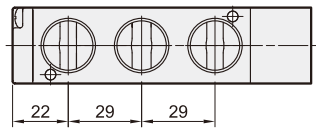
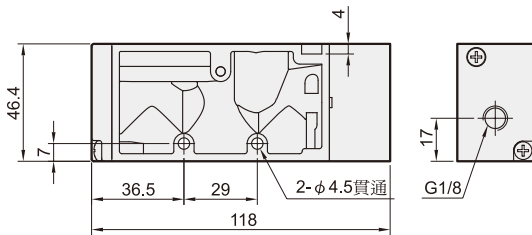
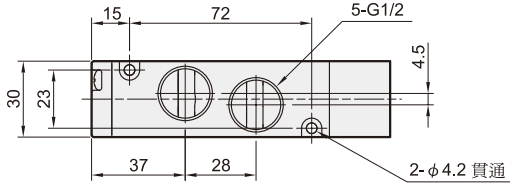
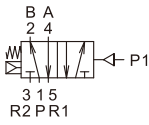


MVAA-460 外觀尺寸

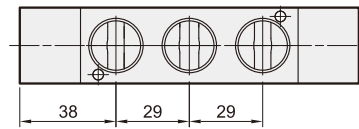
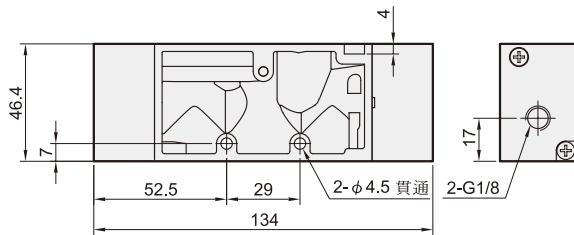
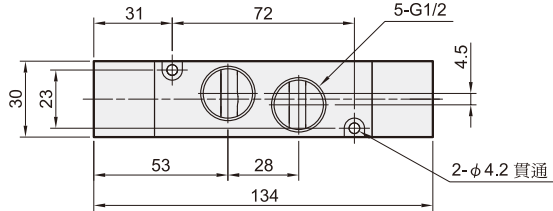
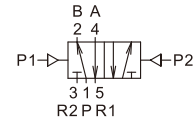
氣動閥



MVAA-460-4A1

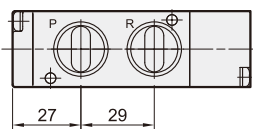
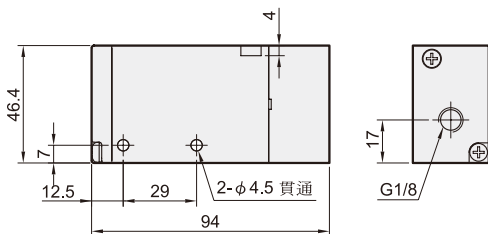
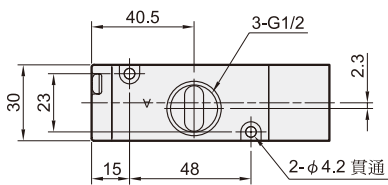
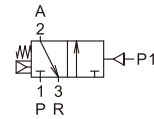


MVAA-460-4A2



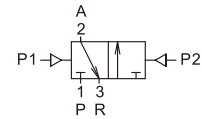
MVAA-460-3A1-NC/NO

NC

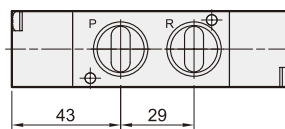
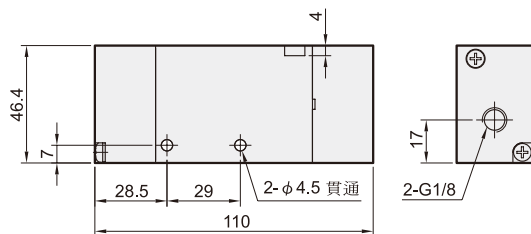
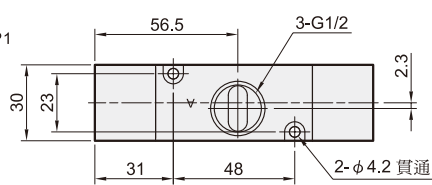
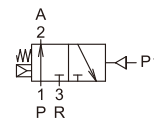


MVAA-460-3A2

NO



NO



Mindman