

規格:

※ NPT牙、G牙亦可訂製，請洽業務人員。

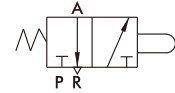
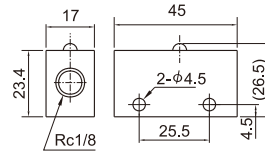
型號	方口數	配管口徑尺寸	使用流體	使用壓力範圍	周圍溫度	重量
EPA-100	3口	Rc1/8	空氣	0~0.9 MPa	-5~+60℃ (不凍結)	43 g
EPA-100A	3口	Rc1/8	空氣	0~0.9 MPa	-5~+60℃ (不凍結)	68 g
EPA-101	3口	Rc1/8	空氣	0~0.9 MPa	-5~+60℃ (不凍結)	70 g
EPA-101A	3口	Rc1/8	空氣	0~0.9 MPa	-5~+60℃ (不凍結)	68 g
EPA-102	3口	Rc1/8	空氣	0~0.9 MPa	-5~+60℃ (不凍結)	104 g
EPA-103	3口	Rc1/8	空氣	0~0.9 MPa	-5~+60℃ (不凍結)	67 g
EPA-104	3口	Rc1/8	空氣	0~0.9 MPa	-5~+60℃ (不凍結)	71 g
EPA-105	3口	Rc1/8	空氣	0~0.9 MPa	-5~+60℃ (不凍結)	68 g
EPA-105L	3口	Rc1/8	空氣	0~0.9 MPa	-5~+60℃ (不凍結)	104 g
EPA-106	3口	Rc1/8	空氣	0~0.9 MPa	-5~+60℃ (不凍結)	61 g
EPA-107	3口	Rc1/8	空氣	0~0.9 MPa	-5~+60℃ (不凍結)	54 g
EPA-108*	3口	Rc1/8	空氣	0~0.9 MPa	-5~+60℃ (不凍結)	100 g
EPA-109	3口	Rc1/8	空氣	0~0.9 MPa	-5~+60℃ (不凍結)	108 g

EPA 系列

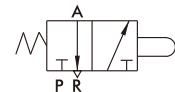
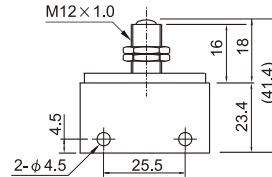
機械閥



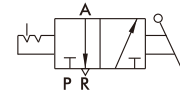
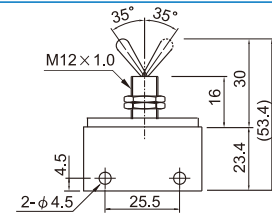
梢柱型
EPA-100



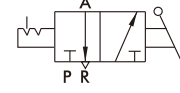
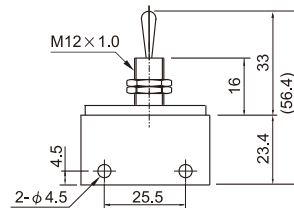
鋼珠型
EPA-100A



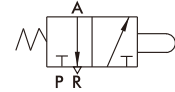
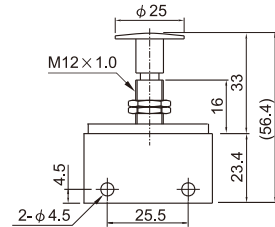
搖桿型
EPA-101



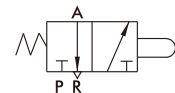
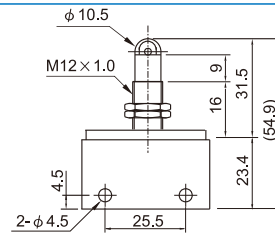
萬向型
EPA-101A



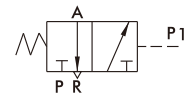
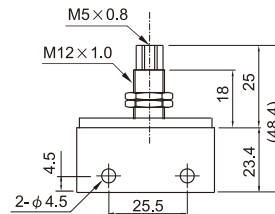
壓扣型
EPA-102



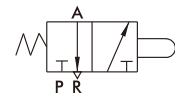
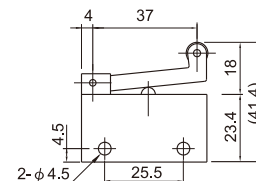
輪柱型
EPA-103



氣動型
EPA-104



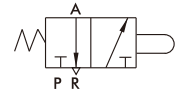
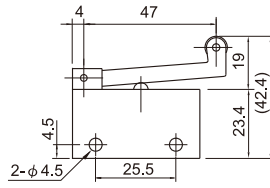
輓輪型
EPA-105



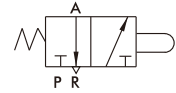
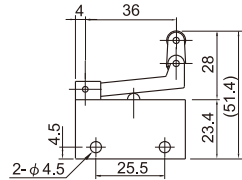
EPA 系列

機械閥

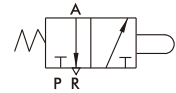
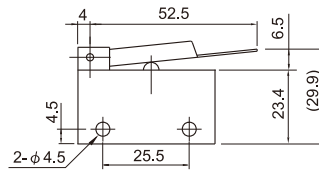
輓輪型
EPA-105L



單向滾輪型
EPA-106

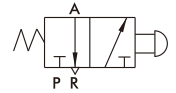
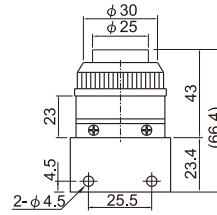


指壓型
EPA-107



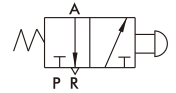
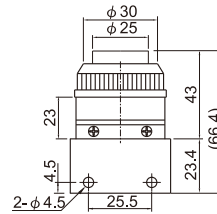
平頭按鈕型
EPA-108B*

* : B=黑色

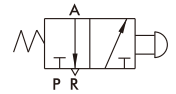
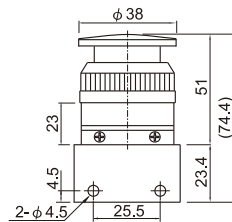


平頭按鈕型
EPA-108G*

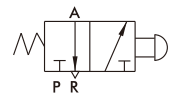
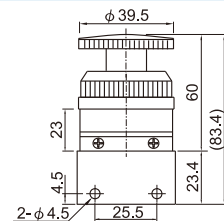
* : G=綠色



大頭按鈕型
EPA-108RA



連鎖按鈕型
EPA-108RA RESET



選擇型
EPA-109

