



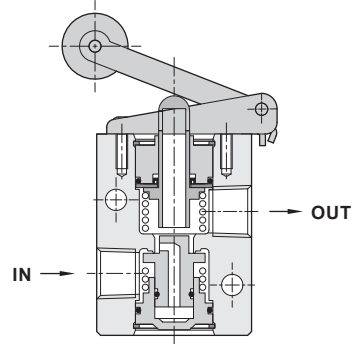
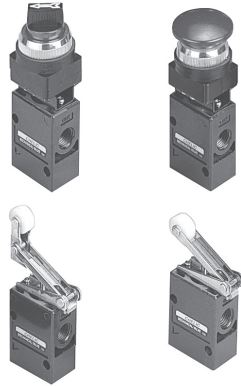
# MV 系列 機械閥 – MV 200

作動規格表與訂購稱呼說明

CHELIC PNEUMATIC

## 內部結構圖

● MV-20-02 (橫向配管/滾輪型)



MV  
控制閥

HVL  
手動閥

HVM  
手動閥

HVT  
小型手動閥

QE  
快速排氣閥

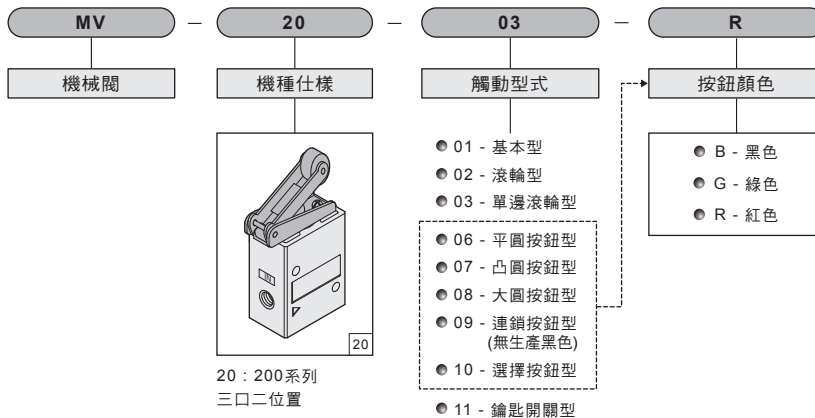
FVA  
腳踏閥

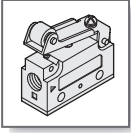
FVS  
腳踏閥

## 規格表

項目	機種	MV-200
使用流體		空氣
使用壓力範圍	Kgf/cm <sup>2</sup> (Kpa)	1~9 (100~900)
使用溫度	°C	0~60°C
位置數		三口二位置
閥仕樣		常閉型
有效斷面積	mm <sup>2</sup> (CV)	33(1.84)
接管口徑	Rc(PT)	Rc 1/4 (橫向配管)
潤滑		自由供給方式

## 訂購稱呼代號



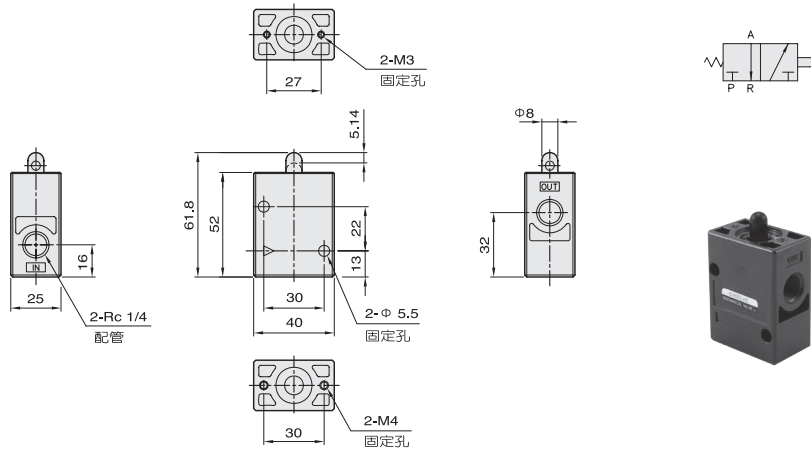


# MV 系列 機械閥 – MV 200

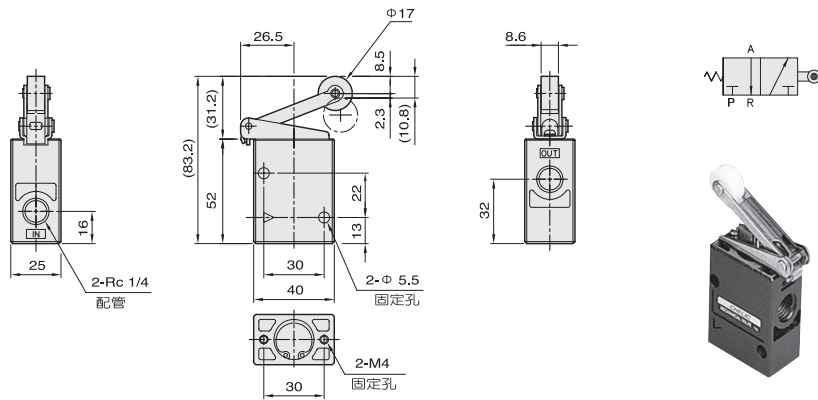
## 外觀圖形尺寸

氣立可空氣壓設備

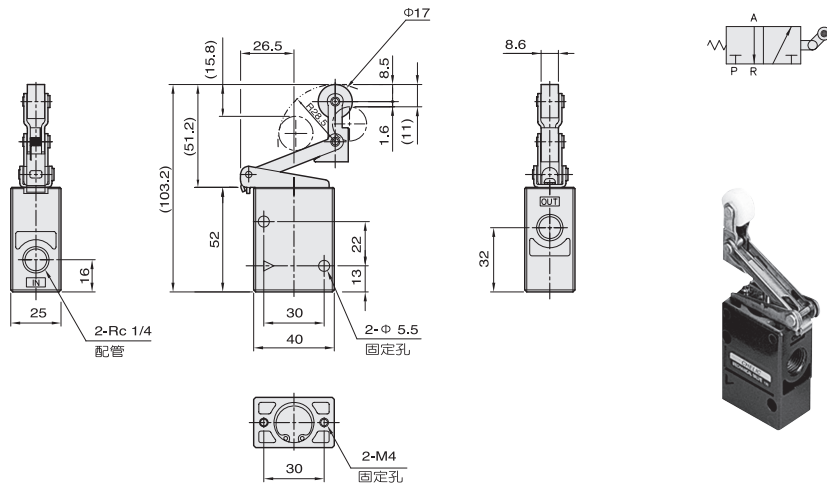
### ◀ MV-20-01 基本型

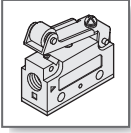


### ◀ MV-20-02 滾輪型



### ◀ MV-20-03 單邊滾輪型



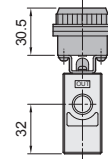
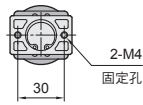
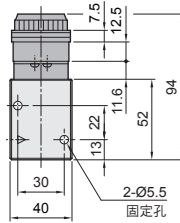
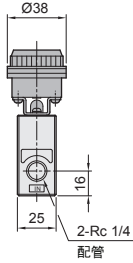


# MV 系列 機械閥 – MV 200

## 外觀圖形尺寸

CHELIC PNEUMATIC

### ◀ MV-20-06 平圓型



● 固定孔尺寸



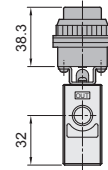
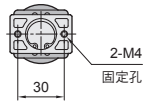
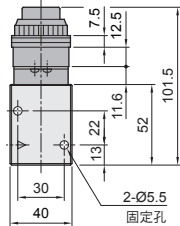
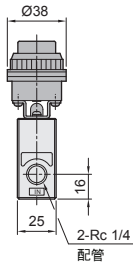
**MV**  
控制閥

**HVL**  
手動閥

**HVM**  
手動閥

**HVT**  
小型手動閥

### ◀ MV-20-07 凸圓型



● 固定孔尺寸

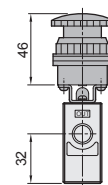
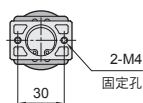
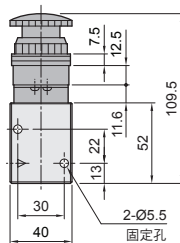
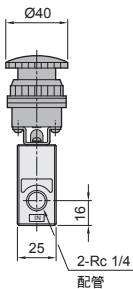


**QE**  
快速排氣閥

**FVA**  
腳踏閥

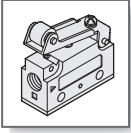
**FVS**  
腳踏閥

### ◀ MV-20-08 大圓型



● 固定孔尺寸



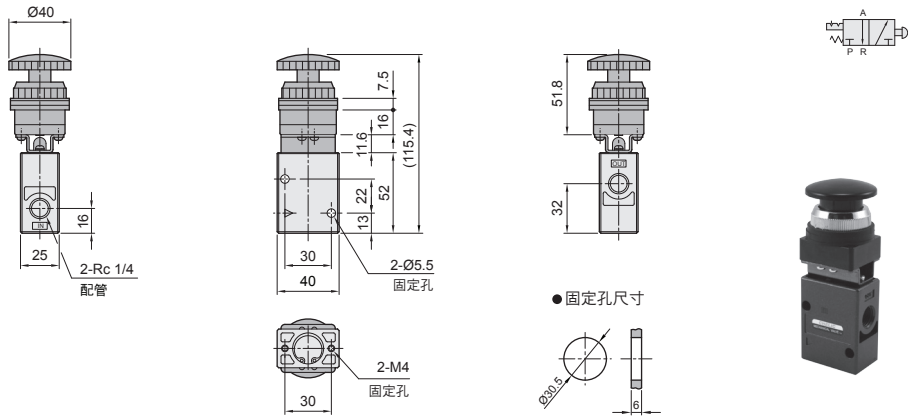


# MV 系列 機械閥 – MV 200

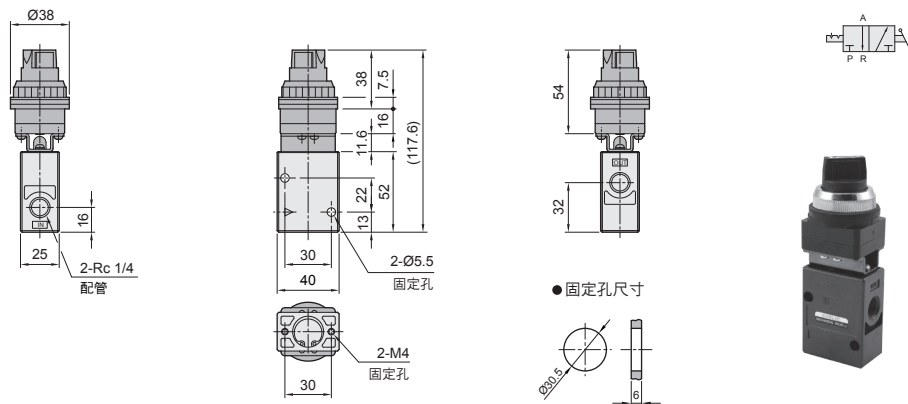
## 外觀圖形尺寸

氣立可空氣壓設備

### ● MV-20-09 連鎖型/押入定位



### ● MV-20-10 選擇型/旋轉定位



### ● MV-20-11 鑰匙型/旋轉定位

