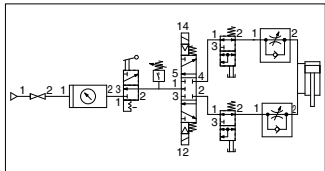


# Residual Pressure Release Valve with One-touch Fitting

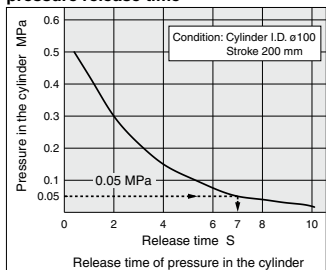
Residual pressure in the cylinder can be easily released with one push of the push button.

Example of circuit diagram (Residual exhaust of air cylinder)



- Easy operation with a push button.
  - Piping parts are available in two types: with One-touch fittings and with Rc thread
- Applicable tubing diameter:  $\phi 6$ ,  $\phi 8$ ,  $\phi 10$ ,  $\phi 12$
- Connection thread Rc: 1/4, 3/8
- Residual pressure release time: Approx. 7 seconds (time required for the pressure to be 0.5 MPa to 0.05 MPa)

Example of air cylinder residual pressure release time



With One-touch fitting without a push button guard



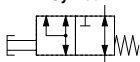
With One-touch fitting with a push button guard

Rc thread with a push button guard



Multi-holder (TMA series) for fixing the KE □ series  
Refer to page 531 for details.

Symbol

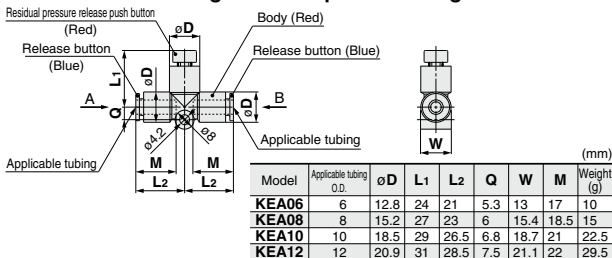


## Specifications

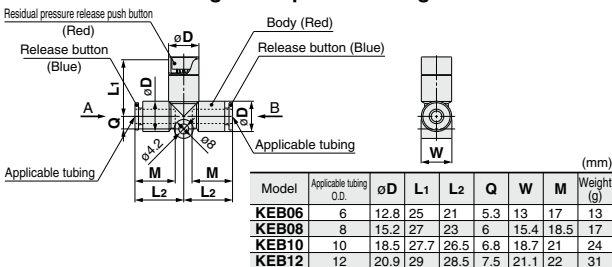
| Model                                       | Without a push button guard               | KEA06                | KEA08                | KEA10                | KEA12                 |
|---|---|----------------------|----------------------|----------------------|-----------------------|
|   | With a push button guard                  | KEB06                | KEB08                | KEB10                | KEB12                 |
|   | Rc thread with a push button guard        | —                    | KEC-02               | —                    | KEC-03                |
| Applicable tubing O.D. or connection thread |   | $\phi 6$             | $\phi 8$ ,<br>Rc 1/4 | $\phi 10$            | $\phi 12$ ,<br>Rc 3/8 |
| Applicable tubing material                  | Nylon, Soft nylon, Polyurethane, FEP, PFA |                      |                      |                      |                       |
| Fluid                                       | Air                                       |                      |                      |                      |                       |
| Operating pressure range                    | 0 to 1 MPa                                |                      |                      |                      |                       |
| Ambient and fluid temperature               | -5 to 60°C (No freezing)                  |                      |                      |                      |                       |
| Effective area                              | Nylon                                     | 13.1 mm <sup>2</sup> | 26.1 mm <sup>2</sup> | 41.5 mm <sup>2</sup> | 58.3 mm <sup>2</sup>  |
|   | A B Polyurethane                          | 13.1 mm <sup>2</sup> | 18.0 mm <sup>2</sup> | 29.5 mm <sup>2</sup> | 46.1 mm <sup>2</sup>  |
| Residual pressure release effective area    | 1.8 mm <sup>2</sup>                       |                      |                      |                      |                       |
| Color                                       | Body                                      | Red                  |                      |                      |                       |
|   | Push button                               | Red                  |                      |                      |                       |
|   | Release button (Tube connection part)     | Blue                 |                      |                      |                       |

## Dimensions

With One-touch fitting without a push button guard: KEA



With One-touch fitting with a push button guard: KEB



Rc thread with a push button guard: KEC

