



# 真空吸盘

吸盘直径  $\phi 20, \phi 25, \phi 35, \phi 50$

## 型号表示方法

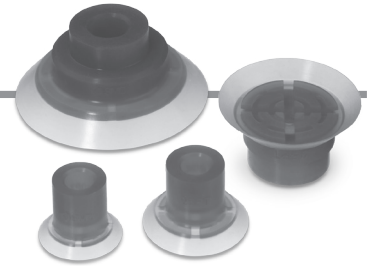
吸盘单体

### ZP3P-20PTSF

吸盘直径	
记号	吸盘直径
20	$\phi 20$
25	$\phi 25$
35	$\phi 35$
50	$\phi 50$

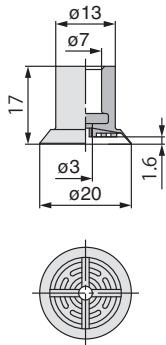
●吸盘材质

记号	材质
SF	硅橡胶 符合FDA(美国食品药品监督管理局)21CFR § 177.2600溶出试验标准

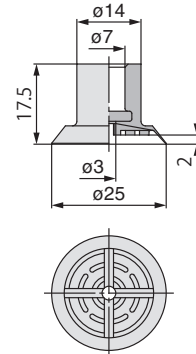


## 外形尺寸图 / 吸盘单体

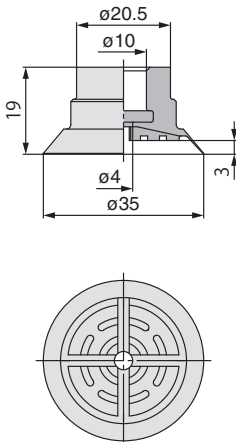
ZP3P-20PTSF [质量 : 1.8g]



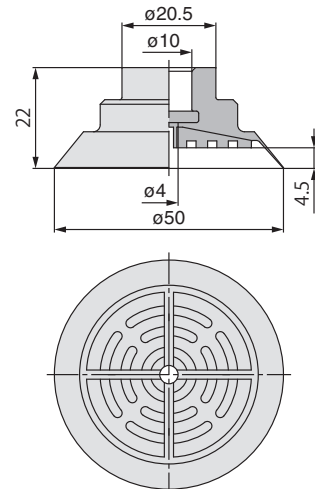
ZP3P-25PTSF [质量 : 2.2g]



ZP3P-35PTSF [质量 : 4.7g]

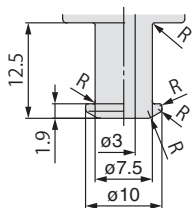


ZP3P-50PTSF [质量 : 12.4g]

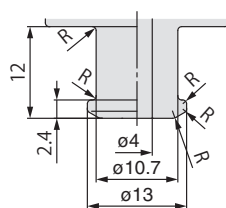


## 吸盘安装部组件尺寸

20PT/25PT



35PT/50PT



注) R部圆滑无棱角。