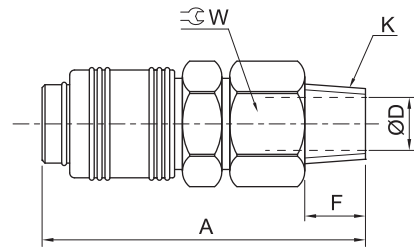


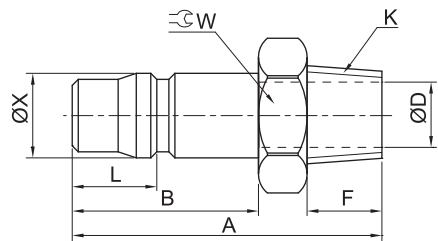
外形尺寸 (mm)

• ZG10 快速接头/母体



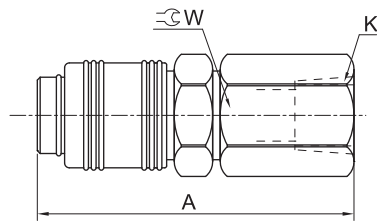
型号	K	A	D	F	W
ZG102S	R1/4	59.2	7	12	20
ZG103S	R3/8	59.2	8	12.5	20
ZG104S	R1/2	60.2	9	13.5	22

• ZG10 快速接头/公体



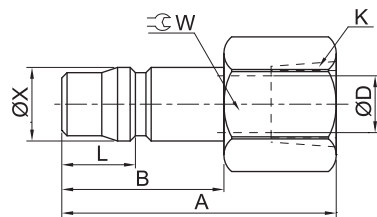
型号	K	A	B	D	L	W	X
ZG102P	R1/4	38.5	21	7	13	14	13
ZG103P	R3/8	39	21	7	13	20	13
ZG104P	R1/2	40	21	7	13	22	13

• ZG20 快速接头/母体



型号	K	A	W
ZG202S	Rc1/4	58	20
ZG203S	Rc3/8	59	20
ZG204S	Rc1/2	61.2	24

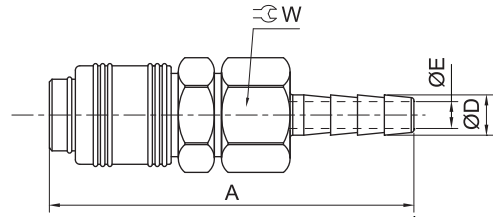
• ZG20 快速接头/公体



型号	K	A	B	D	L	W	X
ZG202P	Rc1/4	35	21	7	13	16	13
ZG203P	Rc3/8	35	21	7	13	20	13
ZG204P	Rc1/2	36.5	21	7	13	24	13

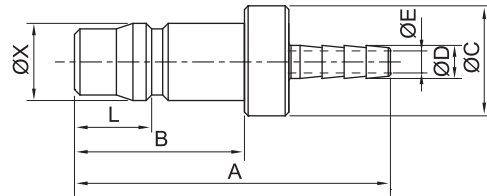
外形尺寸 (mm)

• ZG30 快速接头/母体



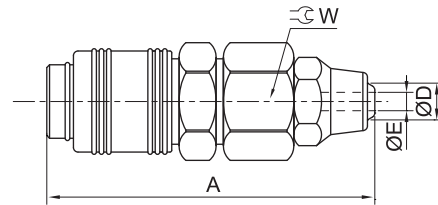
型号	软管内径 Ø	A	D	E	W
ZG302S	6	73.5	7	3.5	20
ZG303S	8	76.5	9	5	20
ZG304S	10	80.5	11	6	20
ZG305S	12	81.5	13.5	8	20

• ZG30 快速接头/公体



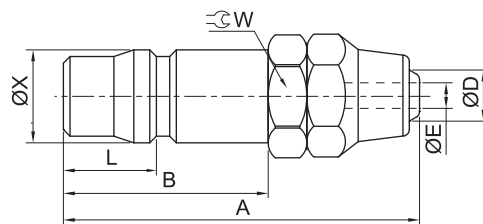
型号	软管内径 Ø	A	B	C	D	E	L	X
ZG302P	6	53.5	21	15	7	3.5	13	13
ZG303P	8	56.5	21	15	9	5	13	13
ZG304P	10	60.5	21	15	11	6	13	13
ZG305P	12	61.5	21	15	13.5	8	13	13

• ZG40 快速接头/母体



型号	配管外径 Ø	配管内径 Ø	A	D	E	W
ZG401S	6	4	45	5.5	2.5	16
ZG402S	8	5	62	7	3	20
ZG403S	10	6.5	63	9	5	20
ZG404S	12	8	64	11	7	20

• ZG40 快速接头/公体



型号	配管外径 Ø	配管内径 Ø	A	B	D	E	L	W	X
ZG401P	6	4	33.5	13.5	5.5	2.5	4.5	12	9
ZG402P	8	5	41.5	21	7	3	13	14	13
ZG403P	10	6.5	42.5	21	9	5	13	16	13
ZG404P	12	8	43.5	21	11	7	13	18	13