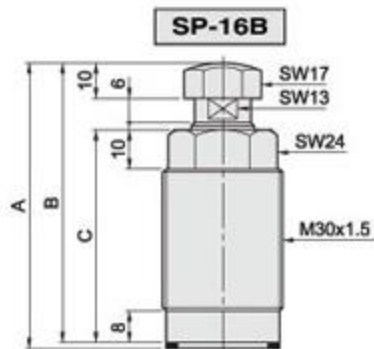
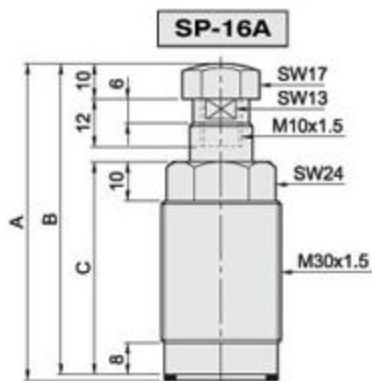
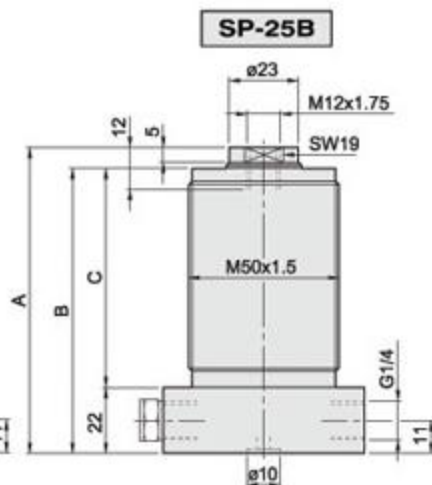
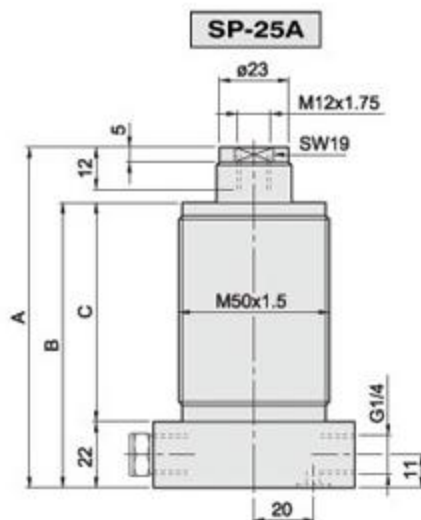
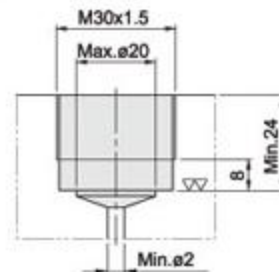


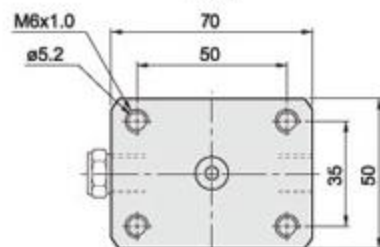
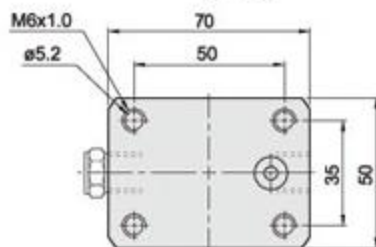
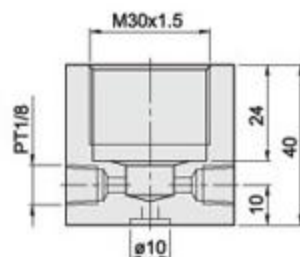
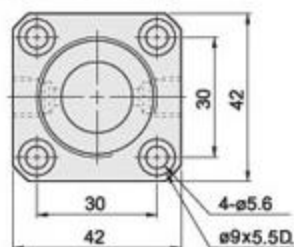
2D-CAD.DWG圖檔下載



**SP-16A SP-16B
安裝底座示意圖
Mounting base diagram**



SP-16Base



| | |
|-----------|---------|
| Line type | SP-25A |
| Manifold | SP-M25A |

| | |
|-----------|---------|
| Line type | SP-25B |
| Manifold | SP-M25B |

尺寸規格表

| ITEM | MODEL | SP-16A1 | SP-16A2 | SP-16B1 | SP-16B2 | SP-25A | SP-25B |
|---|-----------------------|-----------------------|---------|-------------------|---------|-----------------|--------|
| 頂橫直徑 Rod size | mm | ø16 | | | | ø25 | |
| 頂橫行程 Rod stroke | mm | 8 | | | | 12 | |
| 最小操作壓力 Min. pressure | | 100Kg/cm ² | | | | | |
| 頂桿接觸工件力量 Rod force of touching work-piece | | Min=0.8Kg Max=1.3Kg | | Min=1Kg Max=2.3Kg | | Min=3Kg Max=5Kg | |
| 理論支撐力 Supporting force | 500Kg/cm ² | 650Kg | 950Kg | 650Kg | 950Kg | 2000Kg | |
| A | mm | 80.5 | 90.5 | 72.5 | 82.5 | 113 | 101 |
| B | mm | 79 | 89 | 71 | 81 | 94 | 94 |
| C | mm | 54 | 64 | 54 | 64 | 72 | 72 |