

Liquid Drain Ball Valves

Sizes 1/2", 3/4" & 1" (13, 20 & 25mm)

Suitable For Ammonia, Fluorocarbons,
Nitrogen and Carbon Dioxide

Features

- Spring Return to Close
- Ball is Relief Ported
- RPTFE Stuffing Box Ring
- All Components of Lever are Stainless Steel
- Blow-out Proof Stem Design
- Adjustable Packing Gland

Pressure Relief

Determine and provide corrective action against excessive pressure build up in the valve or piping system due to thermal expansion. Thermal expansion can create extreme pressures well above the working pressure limit of the valve which can cause leaking or bursting of the valve

Supports

If you choose to connect a flexible hose or other non-ridged conduit to the valve, the design of such installation must prevent any "whipping action" that could injure or damage personnel or equipment. Valve must be immobile.

Fittings

Use only those fittings or piping that are compatible with the valves being used to prevent breakage and/or leakage.

Pressure/Temperature Limits

The maximum working pressure limit of the valve is marked on the valve body. Never exceed the "WOG" rating which is specified up to 100°F. Temperatures higher than 100°F decrease the maximum working pressure limit.

BULLETIN 89-00B



March 2007

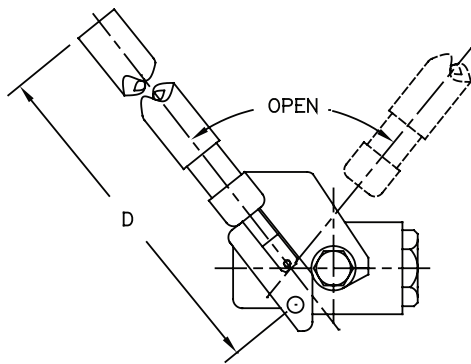
Installation, Service and Parts Information

Installation

The use of ptfе pipe tape as a sealant is recommended for threaded valves when making joints. Correct lubrication of stainless steel pipe threads is especially important to prevent thread galling. Do not apply excessive torque when installing the valve. To prevent distortion or damage to the valve, do not apply torque through the valve. Use proper supports in handling prefabricated sections and in final installations. **Always test the system before using.**

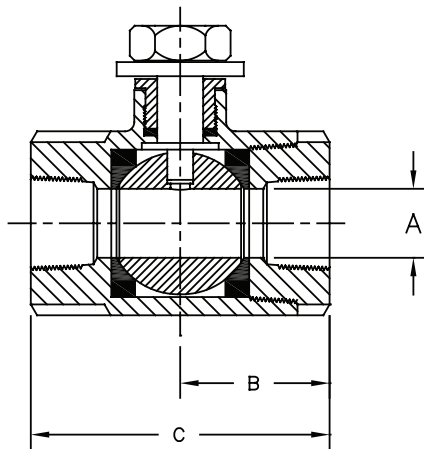
Maintenance

Do not disassemble the valve while under pressure. Request a maintenance manual before attempting repairs to the valve.



Size	Carbon Steel	Stainless Steel	Shipping Weights	
			kg	lbs
1/2"	206548	206551	0.6	1.3
3/4"	206549	206552	0.9	2.0
1"	206550	206553	1.0	2.3

Liquid Drain Ball Valve Parts List



Size	A		B		C		D	
	mm	in	mm	in	mm	in	mm	in
1/2"	12.7	0.5	28.0	1.12	57.0	2.25	178	7.0
3/4"	17.0	0.68	38.0	1.5	76.0	3.00	178	7.0
1"	22.0	0.87	43.0	1.68	86.0	3.37	178	7.0

Liquid Drain Ball Valve Dimension Table

Safe Operation (See also Bulletin RSB)

People doing any work on a refrigeration system must be qualified and completely familiar with the system and the Refrigerating Specialties Division valves involved, or all other precautions will be meaningless. This includes reading and understanding pertinent Refrigerating Specialties Division product Bulletins and Safety Bulletin RSB prior to installation or servicing work.

Where cold refrigerant liquid lines are used, it is necessary that certain precautions be taken to avoid damage that could result from liquid expansion. Temperature increase in a piping section full of solid liquid will cause high pressure due to the expanding liquid that can possibly rupture a gasket, pipe or valve. All hand valves isolating such sections should be marked, warning against accidental closing, and must not be closed until the liquid is removed. Check valves must never be installed upstream of solenoid valves, or regulators with electric shut-off, nor should hand valve upstream of solenoid valves or downstream of check valves be close until the liquid has been removed. It is advisable to properly install relief devices in any section where liquid expansion could take place.

Avoid all piping or control arrangements that might produce thermal or pressure shock. For the protection of people and products, all refrigerant must be removed from the section to be worked on before a valve, strainer, or other device is opened or removed. Flanges with ODS connections are not suitable for ammonia service.

Warranty

All Refrigerating Specialties products are warranted against defects in workmanship and materials for a period of one year from date of shipment from originating factory. This warranty is in force only when products are properly installed, field assembled, maintained, and operated in use and service as specifically stated in Refrigerating Specialties Catalogs or Bulletins for normal refrigeration applications, unless otherwise approved in writing by Refrigerating Specialties Division. Defective products, or parts thereof, returned to the factory with transportation charges prepaid and found to be defective by factory inspection will be replaced or repaired at Refrigerating Specialties option, free of charge F.O.B. factory. Warranty does not cover products that have been altered, or repaired in the field; damaged in transit, accidents, misuse, or abuse. Products disabled by dirt or other foreign substances will not be considered defective.

The express warranty above constitutes the only warranty of Refrigerating Specialties products, and is in lieu of all other warranties, expressed or implied, written or oral, including any warranty of merchantability or warranty of fitness for a particular purpose and in no event is Refrigerating Specialties responsible for any consequential damages of any nature whatsoever. No employee, agent, dealer or other person is authorized to give any warranties on behalf of Refrigerating Specialties nor to assume for Refrigerating Specialties any other liability in connection with any of its products.