

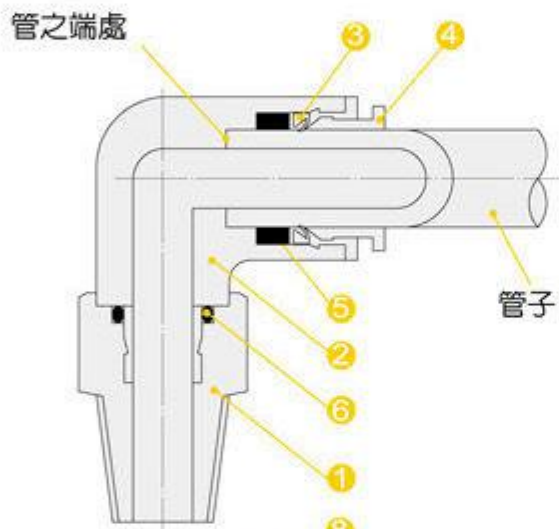
特點

1. 本體之金屬部以黃銅製成，表面鍍鎳，美觀。
2. 螺牙部位上面皆有止洩膠，不需要再用洩帶，節省配管工時
3. 管之夾爪用不銹鋼製成，長時間使用也不會彈性疲乏，造成脫落，產生事故。

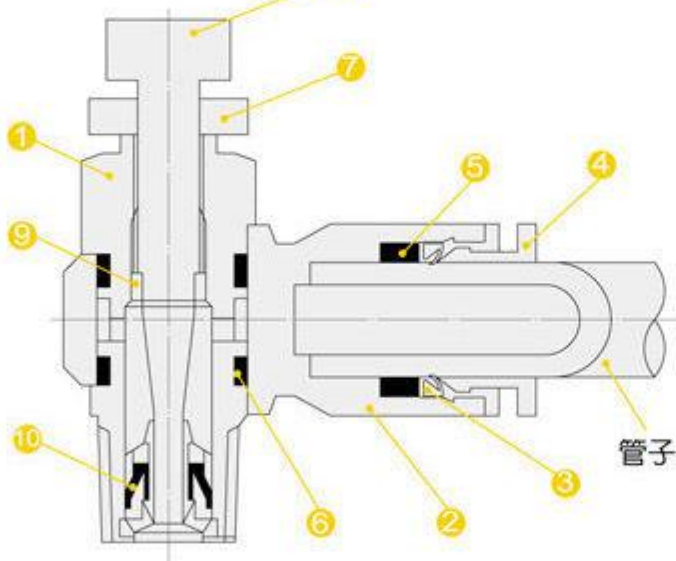


內部構造圖

快速接頭



流量控制



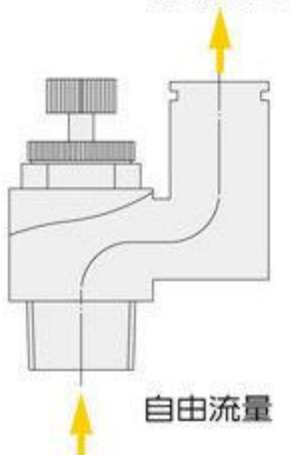
零件表

編號	名稱	材質
1	金屬本體	黃銅鍍鎳
2	樹脂本體	工程塑膠
3	固定爪	不鏽鋼
4	脫離環	塑鋼
5	密封套	NBR
6	O型環	NBR

編號	名稱	材質
1	金屬本體	黃銅鍍鎳
2	樹脂本體	工程塑膠
3	固定爪	不鏽鋼
4	脫離環	塑鋼
5	密封套	NBR
6	O型環	NBR
7	固定螺帽	鋁合金
8	針閥	銅
9	V型迫緊	NBR
10	膜片	

A 排氣控制型

直形 ZB640
控制流量

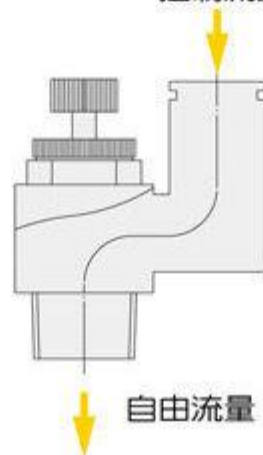


彎形 ZB660



B 進氣控制型

直形 ZB649
控制流量

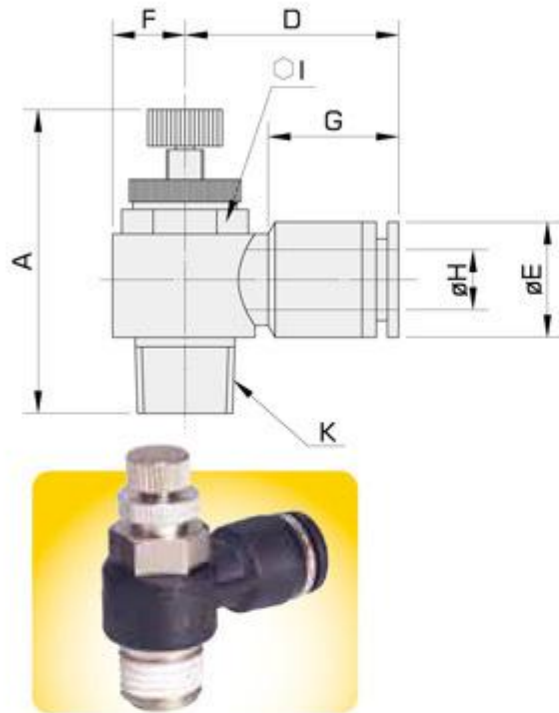


彎形 ZB668



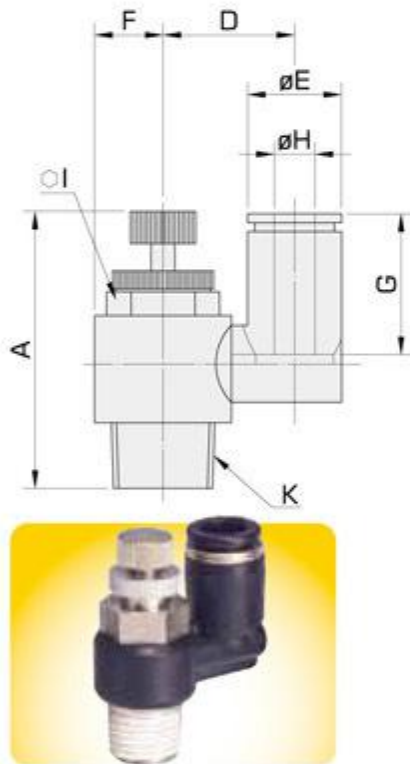
外形尺寸表

ZB660 調速接頭



型號	øH	K	A		D	øE	F	G	I	重量(g)
			最大	最小						
ZB660-04-M5	4	M5	29.9	27.1	20.2	9.9	4.9	14.9	8	8.5
ZB660-04-01		1/8	40	34	21.7	10	7.2		10	17.8
ZB660-04-02		1/4	47.5	41.5	23.9	10	9.2		15.9	14
ZB660-06-M5	6	M5	29.9	27.1	24.2	12.6	4.9	17	8	9.5
ZB660-06-01		1/8	40	34	23.7	12.7	7.2		10	18.7
ZB660-06-02		1/4	47.5	41.5	25.7	12.7	9.2		14	35.8
ZB660-06-03		3/8	54.7	47.7	29.2	12.9	11		19	65.3
ZB660-08-01	8	1/8	40	34	27.1		7.2	18.1	10	20.1
ZB660-08-02		1/4	47.5	41.5	28.6	14.6	9.2		14	37.2
ZB660-08-03		3/8	53.5	46.5	29.1		11		19	65.7
ZB660-10-02	10	1/4	47.5	41.5	31.2	18	9.2	20.2	14	40.5
ZB660-10-03		3/8	53.5	46.5	31.5		11		19	69.2
ZB660-10-04		1/2	61	53.5	36.6		14		23.3	24
ZB660-12-02	12	1/4	47.5	41.5	34.1		9.2	23.3	14	69.5
ZB660-12-03		3/8	53.5	46.5	37.1	21.3	11		19	72.7
ZB660-12-04		1/2	61	53.5	36.6		14		24	104

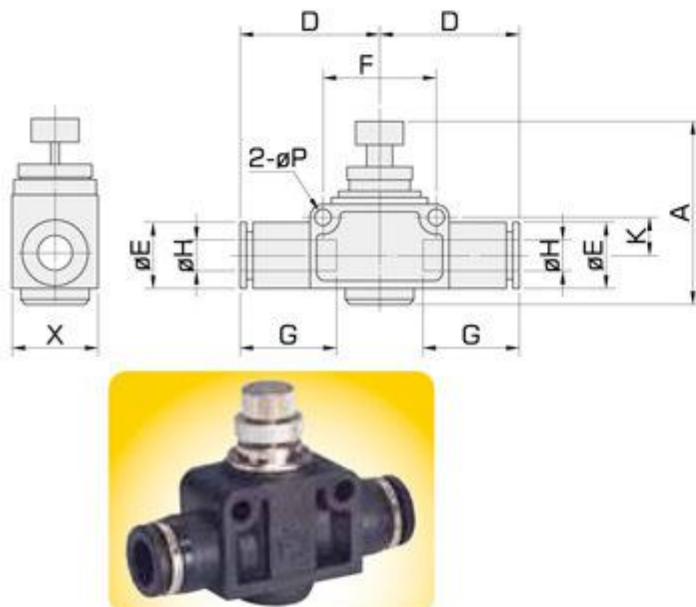
ZB640 直形調速接頭



型號	øH	K	A		D	øE	F	G	I	重量(g)
			最大	最小						
ZB640-04-M5	4	M5	29.9	27.1	10.5	10.2	4.9	14.9	8	9.2
ZB640-04-01		1/8	40	34	13	10	7.2		10	19.1
ZB640-04-02		1/4	47.5	41.5	15	10	9.2		14	36.2
ZB640-06-M5	6	M5	29.9	27.1	12.2	12.6	4.9	17	8	9.9
ZB640-06-01		1/8	40	34	14.2		7.2		10	19.9
ZB640-06-02		1/4	47.5	41.5	17.2	12.7	9.2		14	37.2
ZB640-06-03		3/8	53.5	46.5	19.2		11		19	65.1
ZB640-08-01	8	1/8	40	34	15.2		7.2	18.1	10	21.4
ZB640-08-02		1/4	47.5	41.5	18.2	14.6	9.2		14	39
ZB640-08-03		3/8	53.5	46.5	19.2		11		19	68.1
ZB640-10-02	10	1/4	47.5	41.5	19.8		9.2	20.2	14	42.5
ZB640-10-03		3/8	53.5	46.5	20.8	18	11		19	71.6
ZB640-10-04		1/2	61	53.5	23.8		14		24	104
ZB640-12-02	12	1/4	47.5	41.5	21.7		9.2	23.3	14	69.5
ZB640-12-03		3/8	53.5	46.5	22.5	21.3	11		19	75.2
ZB640-12-04		1/2	61	53.5	25.5		14		24	110

ZB770 面板形調速接頭

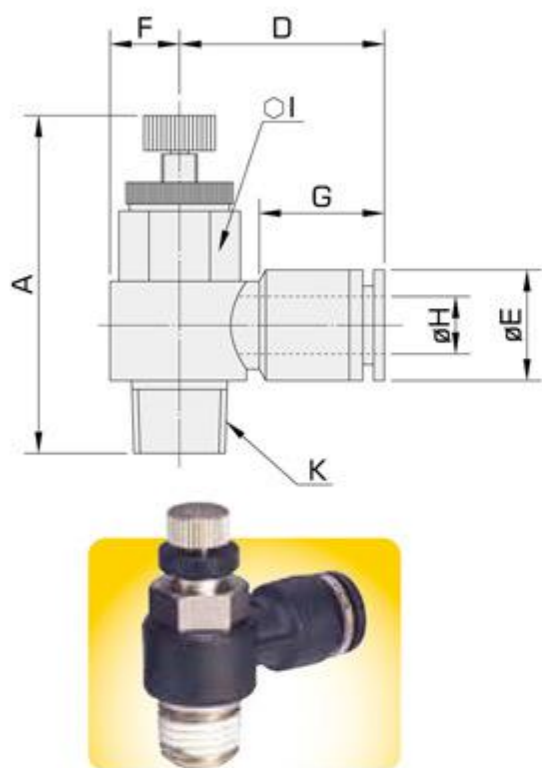
(適用裝於面板或遠端控制)



型號	øH	A		D	øE	F	G	K	P	X	重量(g)
		最大	最小								
ZB770-04	4	28.8	26	20.7	10.5	14	14.9	6.5	3.2	11	12.4
ZB770-06	6	41.6	36	25.1	13	20	17	8.5	4.3	15	28.5
ZB770-08	8	47.4	42.9	27.6	15	22	18.1	9.5	4.3	18	43.1
ZB770-10	10	52.4	45.7	32	18	26	20.2	11	4.3	21	68.7
ZB770-12	12	56.3	49.2	37.4	21	32	23.3	13	4.3	28	115

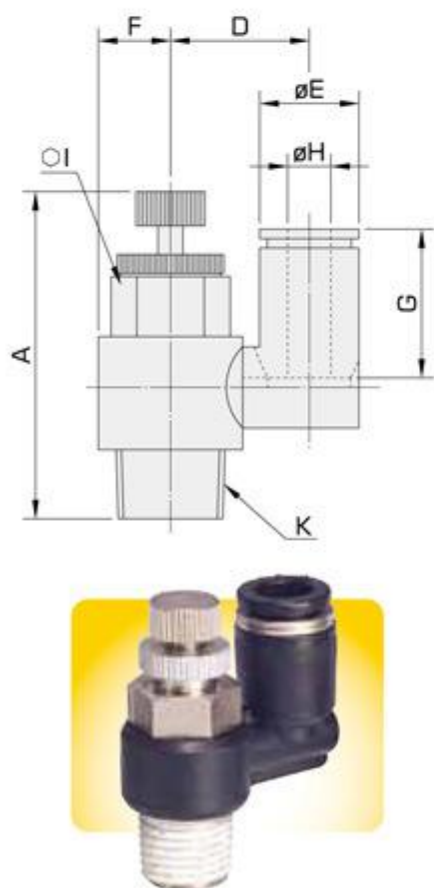
外形尺寸表

● 調速接頭 ZB668



型號	øH	K	A		D	øE	F	G	I	重量(g)
			最大	最小						
ZB668-04-M5	4	M5	30.7	27.1	14.7	8.4	4.9	10.3	8	7
ZB668-04-01		1/8	40.4	34.8	17.7		7.2	11	10	16.6
ZB668-06-M5	6	M5	30.3	26.8	17.5	11	4.9	11.6	8	7.6
ZB668-06-01		1/8	40.5	34.7	18.3		7.2		10	17.3

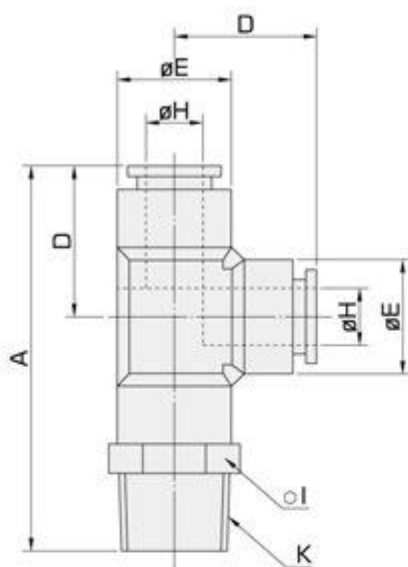
● 直型調速接頭 ZB649



型號	øH	K	A		D	øE	F	G	I	重量(g)
			最大	最小						
ZB649-04-M5	4	M5	29.9	27.1	9	8	4.9	11.25	8	7.5
ZB649-04-01		1/8	40.1	34	11.3		7.2	11	10	17
ZB649-06-M5	6	M5	29.9	27.1	10.85	10.5	4.9	11.85	8	8.5
ZB649-06-01		1/8	40.1	34	12.75		7.2	11.6	10	18

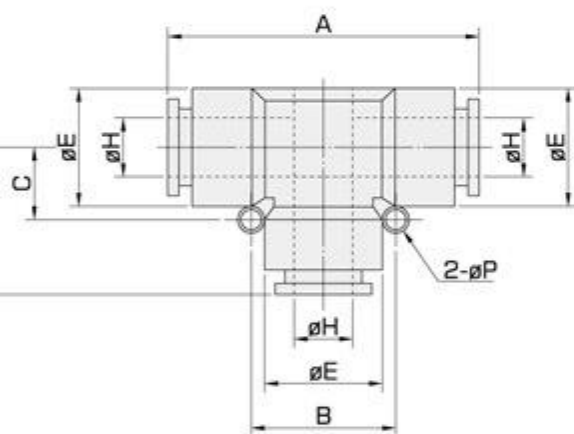
外形尺寸表

ZB103 T型接管



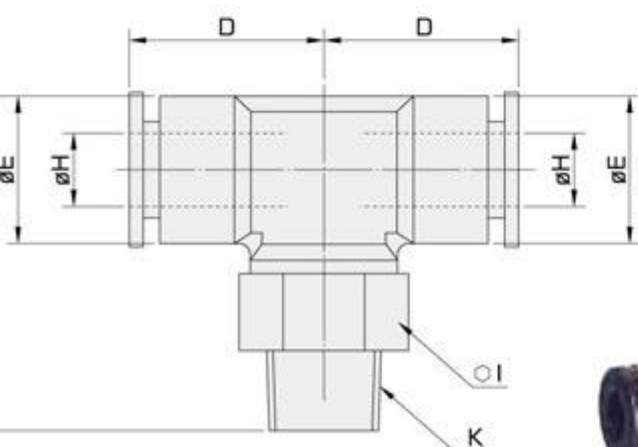
型號	øH	K	A	D	øE	I	重量(g)
ZB103-04-M5	4	M5	37.5	17.2	10	10	11.3
ZB103-04-01		1/8	41.9		10.1		13
ZB103-04-02		1/4	43.5	17	10.1	14	23.5
ZB103-06-M5	6	M5	43.2	20.2	13	12	15.7
ZB103-06-01		1/8	46.2				17
ZB103-06-02		1/4	49.2			14	26
ZB103-06-03		3/8	51			17	38.5
ZB103-08-01	8	1/8	50.5	22.2	15	14	22.6
ZB103-08-02		1/4	53.5				28.5
ZB103-08-03		3/8	55.3			17	41.1
ZB103-10-01	10	1/8	59	26	18	17	27
ZB103-10-02		1/4	62				41.4
ZB103-10-03		3/8	63	26	18	17	50.6
ZB103-10-04		1/2	66				21
ZB103-12-02	12	1/4	66	28	21.5	21	61.1
ZB103-12-03		3/8	67				62.4
ZB103-12-04		1/2	70				77.5

ZB104 T型三通



型號	øH	A	B	C	D	øE	øP	重量(g)
ZB104-04	4	34.4	13	6.5	17.2	10	3.2	7.5
ZB104-06	6	40.6	16	8	20.3	13	3.2	11
ZB104-08	8	44.8	18	9	22.4	15	3.2	15.4
ZB104-10	10	51	24	12	25.5	17.5	4.2	24.7
ZB104-12	12	57.2	28	14	28.6	21	4.2	35.7

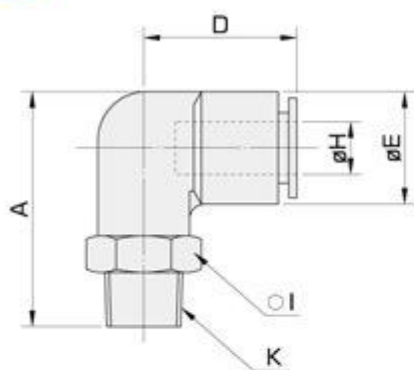
ZB108 T型聯管



型號	øH	K	A	D	øE	I	重量(g)
ZB108-04-M5	4	M5	25.4	17.2	10.2	10	11.5
ZB108-04-01		1/8	28.4				13.2
ZB108-04-02		1/4	31.4	17.2		14	23.9
ZB108-06-M5	6	M5	29.4	20.4	13.2	12	15.6
ZB108-06-01		1/8	32.6	17.5			
ZB108-06-02		1/4	35.6	20.3		14	25.3
ZB108-06-03		3/8	37.4	17		38.7	
ZB108-08-01	8	1/8	34.2	22.7	15.3	14	22.5
ZB108-08-02		1/4	37.2				28.2
ZB108-08-03		3/8	39.1			17	40.8
ZB108-10-01	10	1/8	41.5	37.5	18.3	17	30.1
ZB108-10-02		1/4	44.7				41.4
ZB108-10-03		3/8	45.8	26.4		17	50.3
ZB108-10-04		1/2	48.9				21
ZB108-12-02	12	1/4	48.8	28.2	21.6	21	61.5
ZB108-12-03		3/8	49.8				61.5
ZB108-12-04		1/2	53.8				78.3

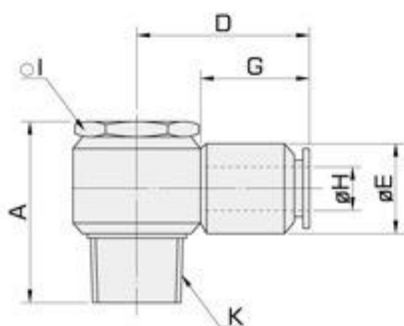
外形尺寸表

彎頭 ZB109



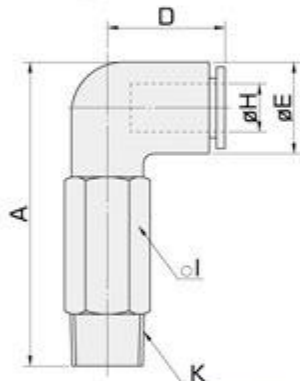
型號	øH	K	A	D	øE	I	重量(g)
ZB109-04-M5	4	M5	25.4	18.3	10.1	10	8
ZB109-04-01		1/8	28.4			10	10.7
ZB109-04-02		1/4	31.4			14	20.2
ZB109-06-M5	6	M5	28.5	19.6	12.9	12	12.1
ZB109-06-01		1/8	31.5	20		12	12.7
ZB109-06-02		1/4	34.5	19.6	12.9	14	21.9
ZB109-06-03		3/8	36.3			17	35
ZB109-08-01	8	1/8	35.5	22.9	15	14	17.9
ZB109-08-02		1/4	38.6	22.4			24
ZB109-08-03		3/8	40.4			17	37
ZB109-10-01	10	1/8	42	26.4	17.9	17	31.2
ZB109-10-02		1/4	45				34.2
ZB109-10-03		3/8	46				42
ZB109-10-04		1/2	50			21	63.8
ZB109-12-02	12	1/4	48.4	29.3	21.5	21	50.3
ZB109-12-03		3/8	49.6				51.5
ZB109-12-04		1/2	52.5				66

轉彎頭 ZB118



型號	øH	K	A	D	øE	G	I	重量(g)
ZB118-04-M5	4	M5	17.2	21.6	10.3	14.9	8	7.5
ZB118-04-01		1/8	25.1	22.6	10.3	14.9	12	20.2
ZB118-04-02		1/4	28.5	23.9	10	15.9	17	33.9
ZB118-06-M5	6	M5	17.2	23.4	12.7	17	8	9.5
ZB118-06-01		1/8	25.1	24.2	12.5	17	12	21.1
ZB118-06-02		1/4	28.5	27	12.8		17	35.5
ZB118-06-03		3/8	-	-	-	-	-	-
ZB118-08-01	8	1/8	27	26.2	14.5	18.1	17	32.4
ZB118-08-02		1/4	31.6	28.6	37			
ZB118-08-03		3/8	36.1	30.3	21		59.6	
ZB118-10-02	10	1/4	31.5	30.5	18	20.2	21	54.7
ZB118-10-03		3/8	36	33.1	18.5			62.5
ZB118-12-02	12	1/4	28.5	33	21.5	23.3	17	40.5
ZB118-12-03		3/8	36	35.2	21			66
ZB118-12-04		1/2	40.3	38.1	21.5	23.3	24	97.5

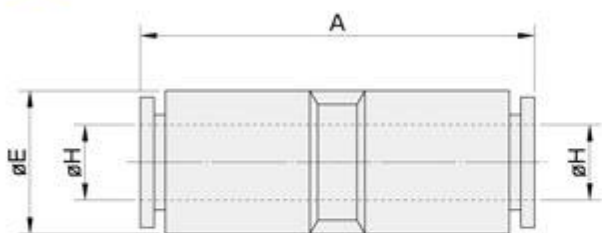
長彎管 ZB129



型號	øH	K	A	D	øE	I	重量(g)
ZB129-04-M5	4	M5	38.8	16.9	10.2	10	17.3
ZB129-04-01		1/8	42.1	17		10	17.8
ZB129-06-01	6	1/8	44.4	19.8	12.8	12	26
ZB129-06-02		1/4	47.4			14	38.8
ZB129-06-03		3/8	49.8			17	61.2
ZB129-08-01	8	1/8	50.9	22.7	14.8	14	36.4
ZB129-08-02		1/4	53.9				42.3
ZB129-08-03		3/8	55.8		15	17	65.5
ZB129-10-02	10	1/4	63.4	26.2	17.8	17	65
ZB129-10-03		3/8	64.4				73.2
ZB129-12-02	12	1/4	70.8	29.4	21.5	21	112
ZB129-12-03		3/8	71.8				107
ZB129-12-04		1/2	74.8				122

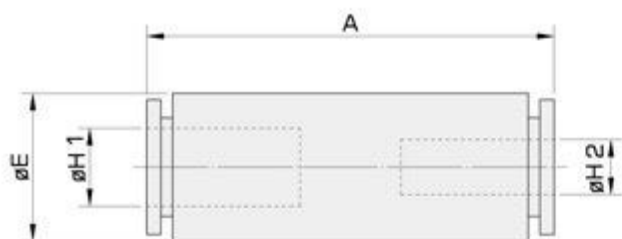
外形尺寸表

ZB106 同徑接管



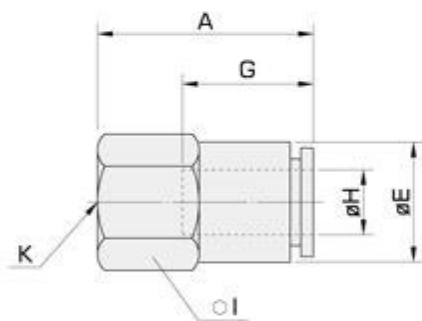
型號	øH	A	øE	重量(g)
ZB106-04	4	30.8	10.1	4
ZB106-06	6	35	12.8	6.7
ZB106-08	8	38.1	14.8	9.4
ZB106-10	10	44.2	17.8	15.8
ZB106-12	12	52.8	21.2	22

ZB107 異徑接管



型號	øH1	øH2	A	øE	重量(g)
ZB107-06-04	6	4	34.7	12.7	6.4
ZB107-08-06	8	6	38.3	14.8	9.1
ZB107-10-08	10	8	43.8	18	14.5
ZB107-12-10	12	10	48.1	21.3	22.7

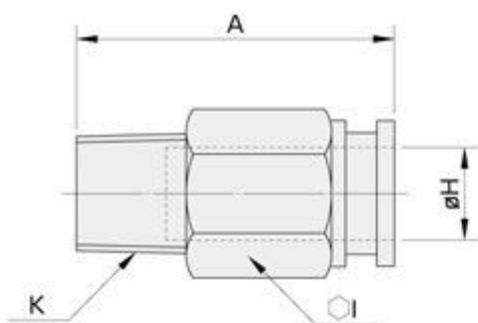
ZB114 牙內接管



型號	øH	K	A	øE	G	I	重量(g)
ZB114-04-01	4	1/8	24.5	11	14.9	14	15.3
ZB114-04-02		1/4	27.7			17	21.8
ZB114-06-01	6	1/8	26.4	13	17	14	18
ZB114-06-02		1/4	29.2			17	25
ZB114-08-01	8	1/8	28.1	14.5	18.1	14	19.5
ZB114-08-02		1/4	31			17	27
ZB114-08-03		3/8	32.1			21	36
ZB114-10-02	10	1/4	33.9	17.5	20.2	17	32
ZB114-10-03		3/8	34.9			21	41
ZB114-12-02	12	1/4	36	20.8	23.3	21	56.2
ZB114-12-03		3/8	36.8			21	51.5
ZB114-12-04		1/2	40.3			24	71.2

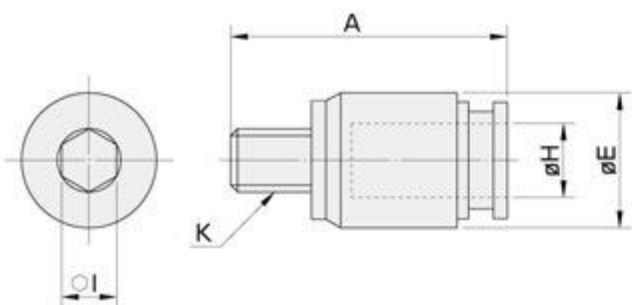
外形尺寸表

直接頭 ZB175



型號	øH	K	A	l	重量(g)
ZB175-04-M5	4	M5	20.1	10	6.3
ZB175-04-01		1/8	21.2	10	8
ZB175-04-02		1/4	21	14	17
ZB175-06-M5	6	M5	22.2	12	9.1
ZB175-06-01		1/8	22.6		9
ZB175-06-02		1/4	24.6	14	17
ZB175-06-03		3/8	23.6	17	27
ZB175-08-01	8	1/8	27.9	14	15
ZB175-08-02		1/4	26.6		
ZB175-08-03		3/8	24	17	23
ZB175-10-01	10	1/8	30.3	17	22.7
ZB175-10-02		1/4	30		20
ZB175-10-03		3/8	29.5	25.8	
ZB175-10-04		1/2	30.5	21	49.2
ZB175-12-02	12	1/4	35.9	21	43
ZB175-12-03		3/8	31.9		35.5
ZB175-12-04		1/2	33.9	49.4	

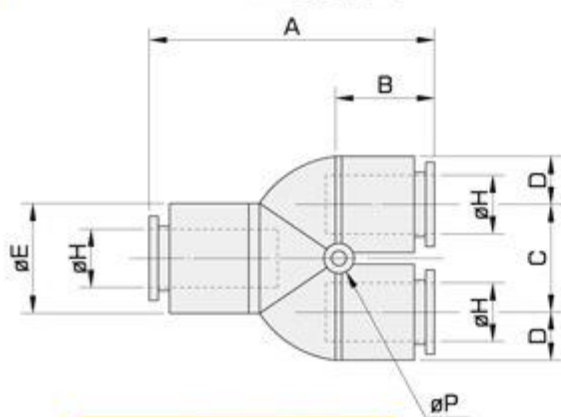
内六角直接頭 ZB176



型號	øH	K	A	øE	l	重量(g)
ZB176-04-M5	4	M5	20	9.7	2.5	5.5
ZB176-04-01		1/8	21	9.7	2.5	8
ZB176-06-M5	6	M5	23	11.8	2	8.2
ZB176-06-01		1/8	22.7		8	
ZB176-06-02		1/4	22.7	14	14.2	
ZB176-08-01	8	1/8	28	14	5	14.1
ZB176-08-02		1/4	26.6		14.7	
ZB176-08-03		3/8	23.9	16.8	6	22
ZB176-10-01	10	1/8	30.6	17.5	5	22.5
ZB176-10-02		1/4	30	17.8	6	22
ZB176-10-03		3/8	29.5			27
ZB176-12-02	12	1/4	35.4	19.8	6	41.5
ZB176-12-03		3/8	31.9	20.8	8	33.7
ZB176-12-04		1/2	33.9			48

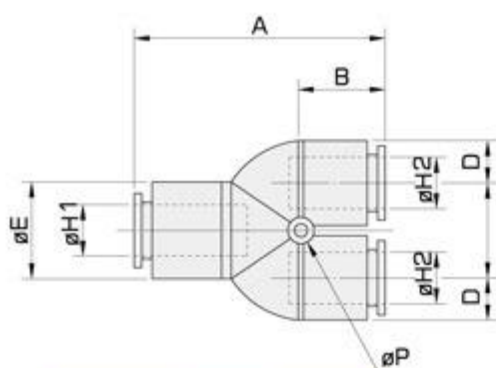
外形尺寸表

ZB140 Y型接管



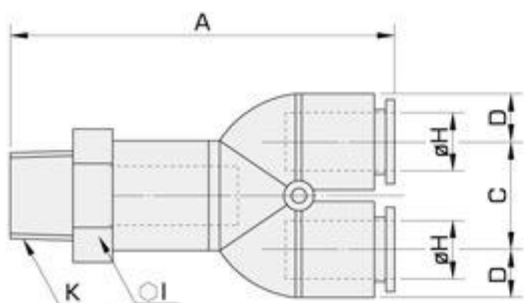
型號	øH1	A	B	C	D	øE	øP	重量(g)
ZB140-04	4	32.5	14.1	11	5.1	10.1	3.4	7.8
ZB140-06	6	38	15.8	12	6.5	13	3.4	10.5
ZB140-08	8	42.8	17.2	14	7.6	15.2	3.4	15.3
ZB140-10	10	49	19.8	18	8.8	18	4.5	19
ZB140-12	12	55.2	22.4	20	10.5	21.5	4.5	28

ZB144 Y型異徑接管



型號	øH1	øH2	A	B	C	D	øE	øP	重量(g)
ZB144-06-04	6	4	37.5	15.2	12	6.4	13	3.2	10.3
ZB144-08-06	8	6	42.7	17.3	14	7.4	15	3.2	14.4
ZB144-10-08	10	8	48.6	19.4	18	8.8	18	4.5	23
ZB144-12-10	12	10	55.1	22.3	20	10.5	21.5	4.5	35.6

ZB148 Y型分接管



型號	øH1	K	A	C	D	I	重量(g)
ZB148-04-M5	4	M5	37.9	11	5	10	12
ZB148-04-01		1/8	41				15
ZB148-04-02		1/4	44				23
ZB148-06-M5	6	M5	41.5	12	6.3	12	15.8
ZB148-06-01		1/8	44.5				18
ZB148-06-02		1/4	47.5				25
ZB148-06-03		3/8	49.5				30
ZB148-08-01	8	1/8	48.9	14	7.3	14	23.3
ZB148-08-02		1/4	52				29.3
ZB148-08-03		3/8	53.7				42.4
ZB148-10-01	10	1/8	55.6	18	8.8	17	28.5
ZB148-10-02		1/4	58.6				43
ZB148-10-03		3/8	59.6				51.5
ZB148-10-04		1/2	62.6				73
ZB148-12-02	12	1/4	63.7	20	10.5	21	63.4
ZB148-12-03		3/8	64.7				64.5
ZB148-12-04		1/2	67.7				79.7