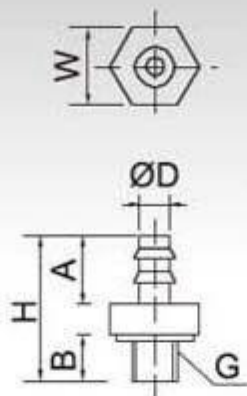


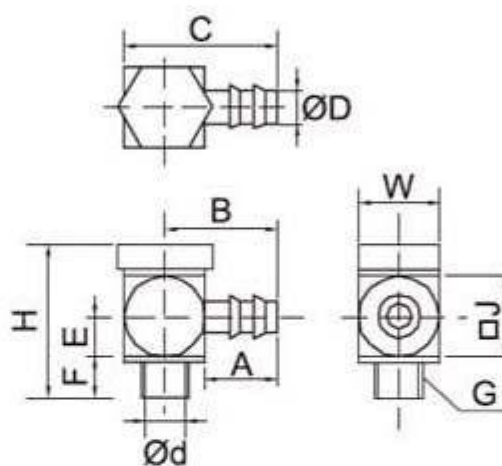
### ● TM-3AU / TM-5AU 微型快插直接頭



#### 外形尺寸表

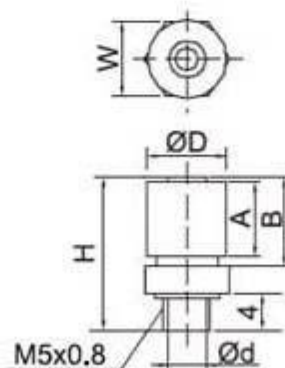
型號	ØD	A	B	G	H	W
TM-3AU-3	1.2	4.5	3	M3x0.5	9.5	5
TM-3AU-4		5			10	
TM-5AU-3	1.6	4.5	4	M5x0.8	11.5	7
TM-5AU-4	1.8	5			12	
TM-5AU-6	2.5	7			14	

### ● TM-3ALU / TM-5ALU 微型快插彎接頭



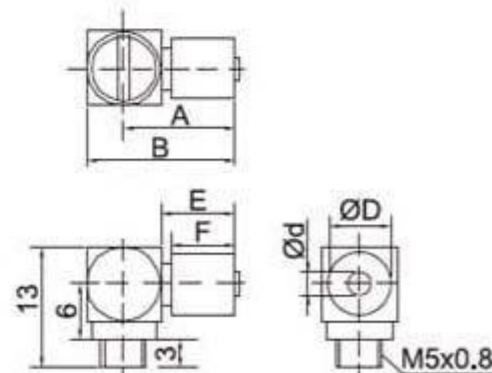
型號	ØD	A	B	C	E	F	G	H	J	W	Ød
TM-3ALU-3	1.6	4.5	7	9.5	2.5	2.5	M3x0.5	9.5	5	5	1.2
TM-3ALU-4	1.8	5.3	7.8	10.3							
TM-5ALU-3	1.6	4.5	8.5	12.5	4	3.5	M5x0.8	11.5	8	8	2.5
TM-5ALU-4	1.8	5	9.3	13.3							
TM-5ALU-6	2.5	7	11.3	15.3		6	3	13			

### ● TM-5H 微型快插直接頭



型號	ØD	A	B	W	H	Ød
TM-5H-4	6.5	7	8.5	7	15.5	1.8
TM-5H-6	8.5	8	9.5	8	16.5	2.5

### ● TM-5HL 微型快插彎接頭



型號	ØD	A	B	E	F	Ød
TM-5HL-4	6.5	12.5	16.5	8.5	7	1.8
TM-5HL-6	8.5	13.5	17.5	9.5	8	2.5