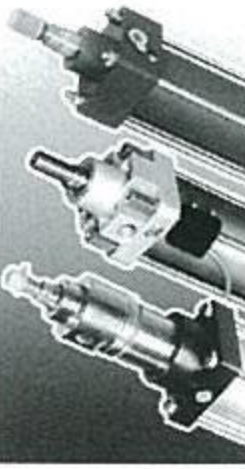
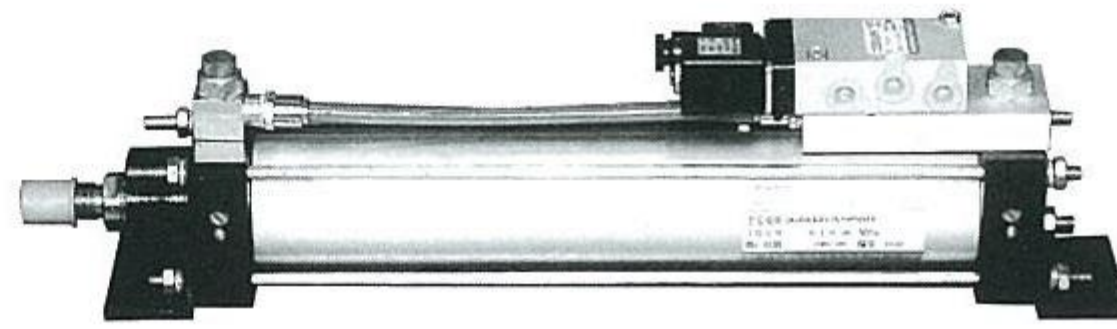
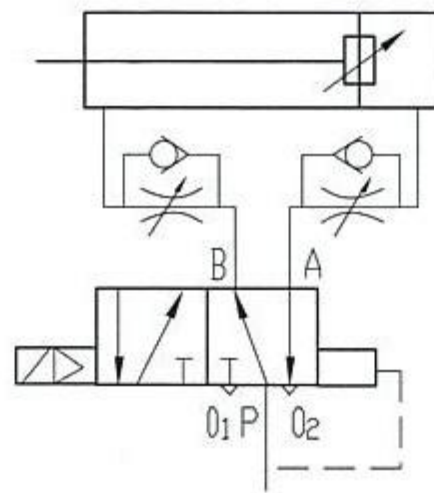


QGB II - F 带阀气缸
QGBII-F TYPE CYLINDER WITH VALVES

图形符号 / Picture symbol



特点

- * QGB II 系列气缸和换向阀组合而成的。即将执行元件、换向控制元件、节流元件巧妙的组合一体，具有换向控制、调速节流多种功能。介质温度 0 ~ 55℃。
- * 安装尺寸与安装形式与 QGB II 系列气缸相同。
- * 小于最小行程需要非标设计。

Features

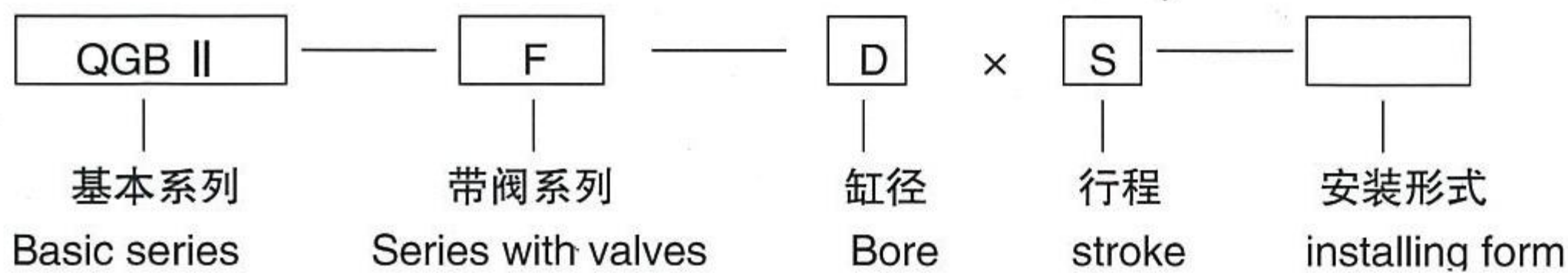
- * This is a combination of the QGBII series air cylinder and the control valves including actuators, control valves and throttle units. And this makes it have the functions of direction changes, speed and throttle regulating etc. The ambient temperature ranges from 0 to 55℃.
- * Mounting dimensions and styles are the same as the QGBII type.
- * Strokes less than the min. stroke listed required nonstandard design.

基本参数 / Basic parameters

项目 / Item		缸径 / Bore	32	40	50	63	80	100	125
换向阀 / Valve	通径 / Bore mm		φ4	φ4	φ4	φ6	φ6	φ12	φ12
	电压 / Voltage		F, AC(50HZ)220V Fa, DC24V						
最小行程 / Stroke MIN			90	90	90	110	110	130	130
尺寸 / Dimensions	h		91	98	108	132	152	177	207
	g		169	170	170	175	178	211	214

其余尺寸与 QGB II 气缸相同 / The other dimensions are the same as the QGBII type.

型号说明 / Type explanation



外形及安装尺寸 / Appearance and installing dimensions

