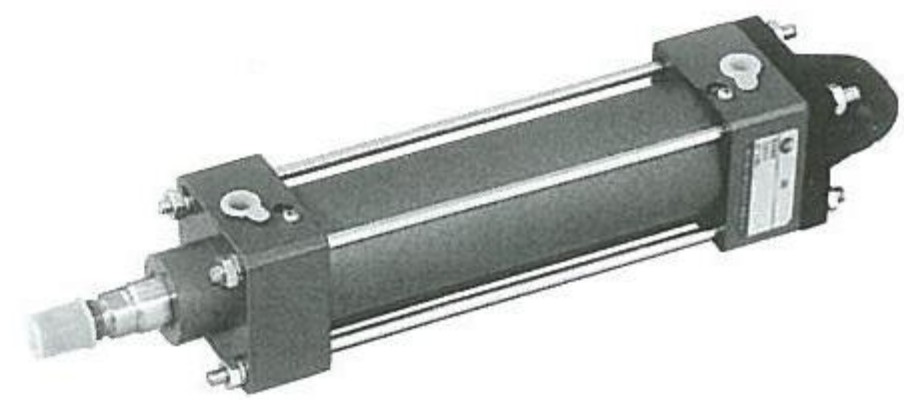


QGA II QGB II 系列气缸
QGA II QGB II SERIES CYLINDER

图形符号 / Diagrammatical Sketch



特点:

设计采用“ISO”国际标准, 新的缓冲结构和新的密封形式, 性能先进可靠, 寿命长久耐用.

QGB II 带可调缓冲, QGA II 无缓冲装置. 活塞杆表面镀铬.

多种安装形式, 使用安装方便, 应用广泛, 活塞运动速度 50-500mm/s.

Features

ISO international standard design, new cushion and sealing styles, rod surface chromed.

Advanced and reliable functions and long service life.

QGB type air cushioned and QGA type without cushion.

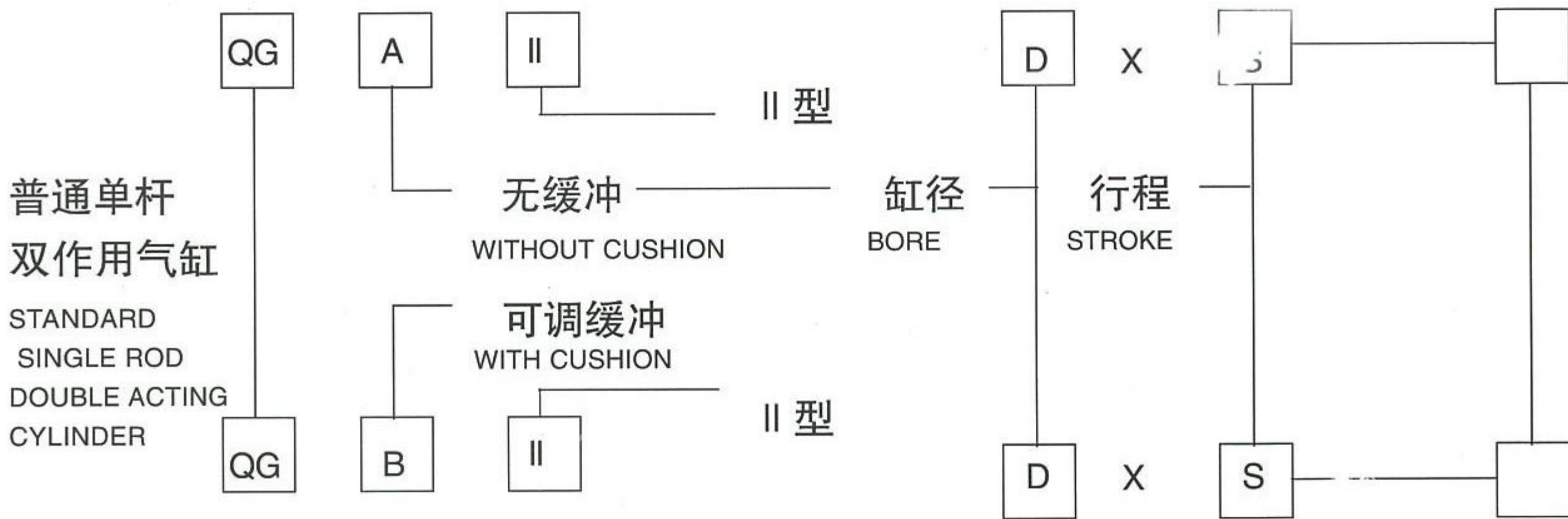
Various mounting styles, easy maintenance and multiple utilizations. Piston speed 50-500mm/s.

基本参数 / Basic Parameters

缸径 D (mm) BORE SIZE		32	40	50	63	80	100	125	160	200	250	320
工作压力 (MPa) WORKING TEMPERATURE		0.15~1										
介质温度 MEDIA TEMPERATURE		-25~+80 (在不冻结条件下) -25~+80(NONFREEZING CONDITION)										
理论作用力 (以 0.4MPa 计算) N THEORETICAL APPLIED FORCE	推力 PUSHING FORCE	322	502	785	1246	2010	3140	4906	8038	12560	19625	32154
	拉力 PULLING FORCE	276	422	589	1050	1688	2819	4404	7253	11775	18086	29610
行程范围 STROKE RANGE	QGB II	≥ 50 ≤ 500	≥ 50 ≤ 600	≥ 60 ≤ 600	≥ 60 ≤ 800	≥ 80 ≤ 1200	≥ 80 ≤ 1200	≥ 100 ≤ 3000	≥ 120 ≤ 3000	≥ 120 ≤ 3000	≥ 120 ≤ 3000	≥ 120 ≤ 3000
	QGA II	> 0 ≤ 600	> 0 ≤ 600	> 0 ≤ 600	> 0 ≤ 800	> 0 ≤ 1200	> 0 ≤ 1200	> 0 ≤ 3000	> 0 ≤ 3000	> 0 ≤ 3000	> 0 ≤ 3000	> 0 ≤ 3000

注: 超出行程范围可协商加工 REMARKS:CONSULT WITH THE PRODUCER IN CASE OF SPECIAL STROKES

型号说明 / Model Example



安装形式	MF ₁	MF ₂	MP ₄	MP ₂	MS ₁	MT ₄
	基本型 (不标注)	前法兰式	后法兰式	尾部单耳式	尾部双耳式	脚架式

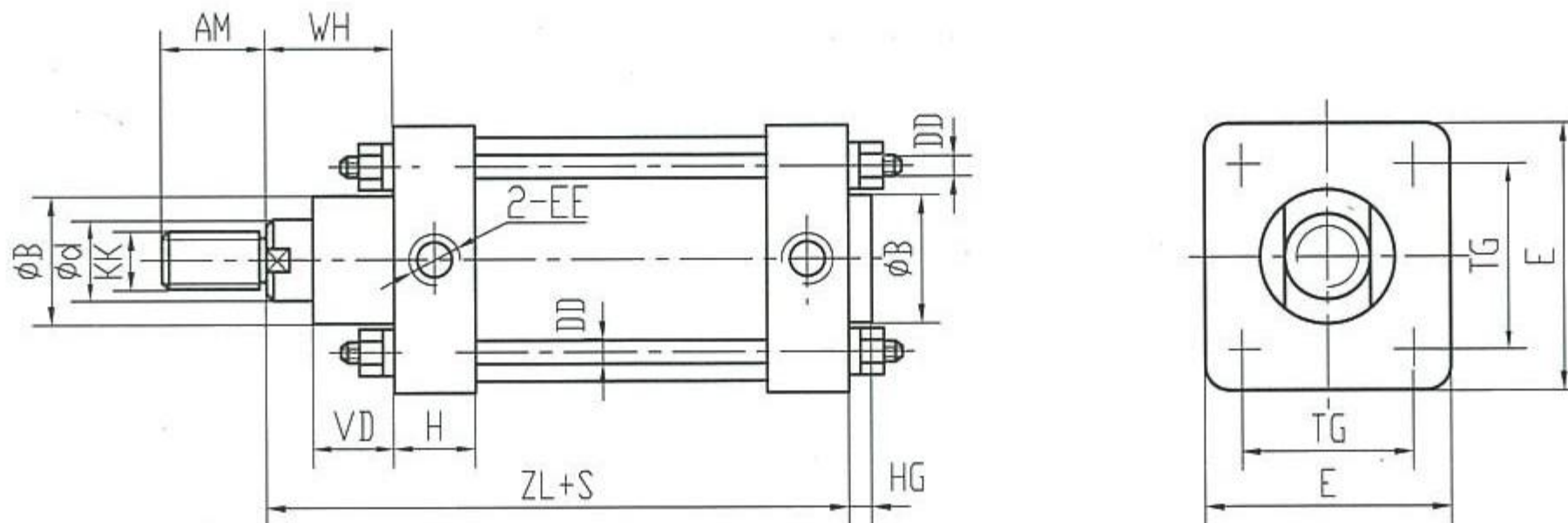
MOUNTING STYLES	STANDARD TYPE (NOT STATED)	ROD SIDE FLANGE TYPE	HEAD SIDE FLANGE TYPE	ROD END SINGLE CLEVIS TYPE	ROD END DOUBLE CLEVIS TYPE	VERTICAL TO AXIS FOOT TYPE	INTERMEDIATE MOVABLE TRUNNION TYPE
		MF ₁	MF ₂	MP ₄	MP ₂	MS ₁	MT ₄

外形及尺寸

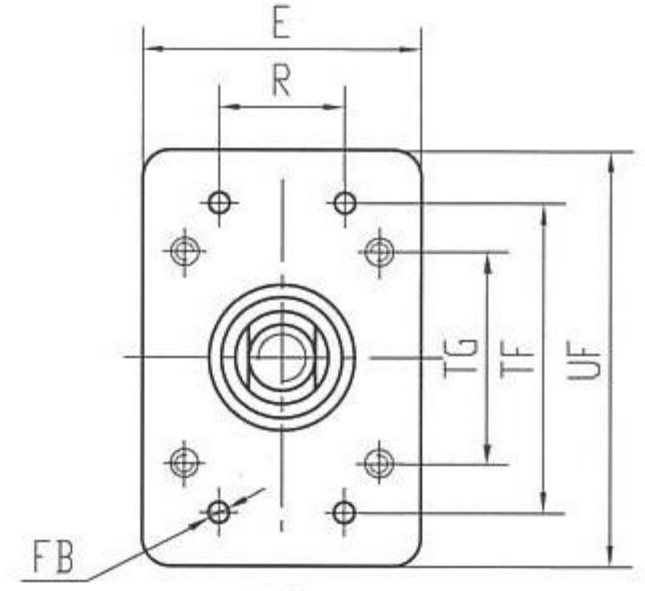
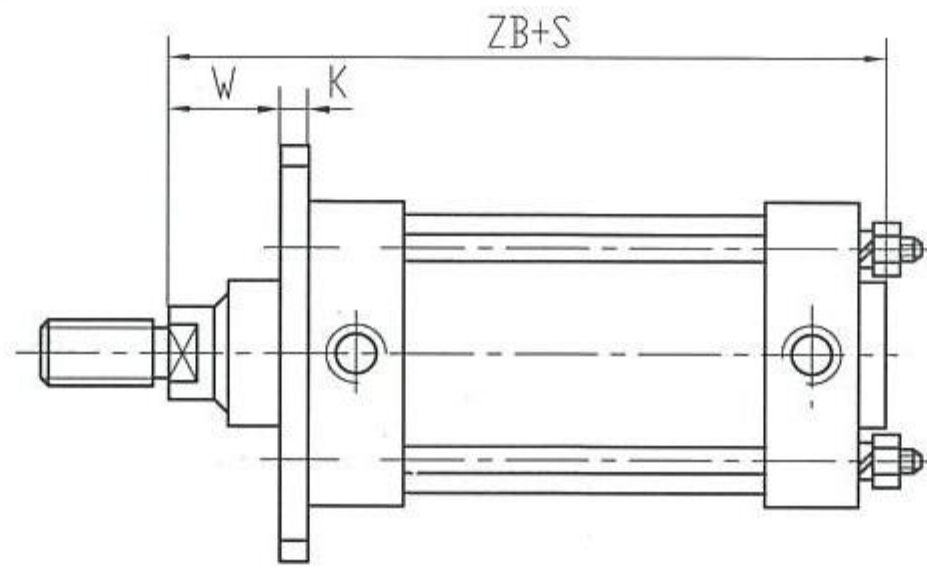
Conformation & Mounting Dimensions

基本型

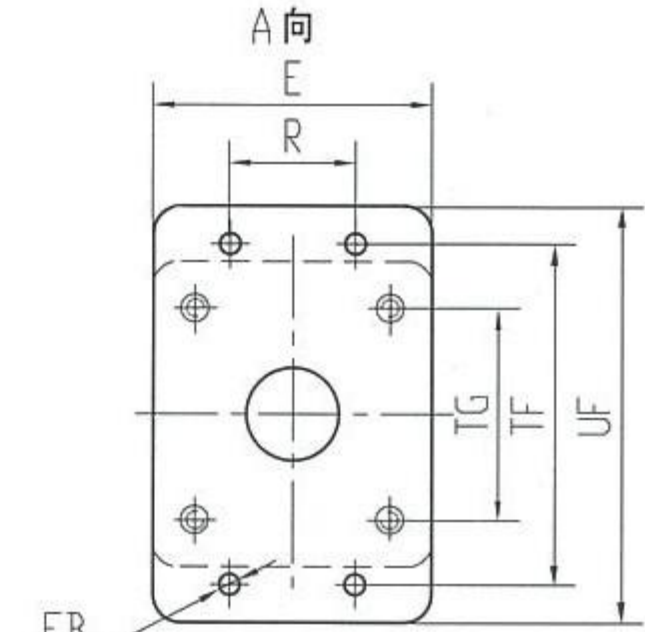
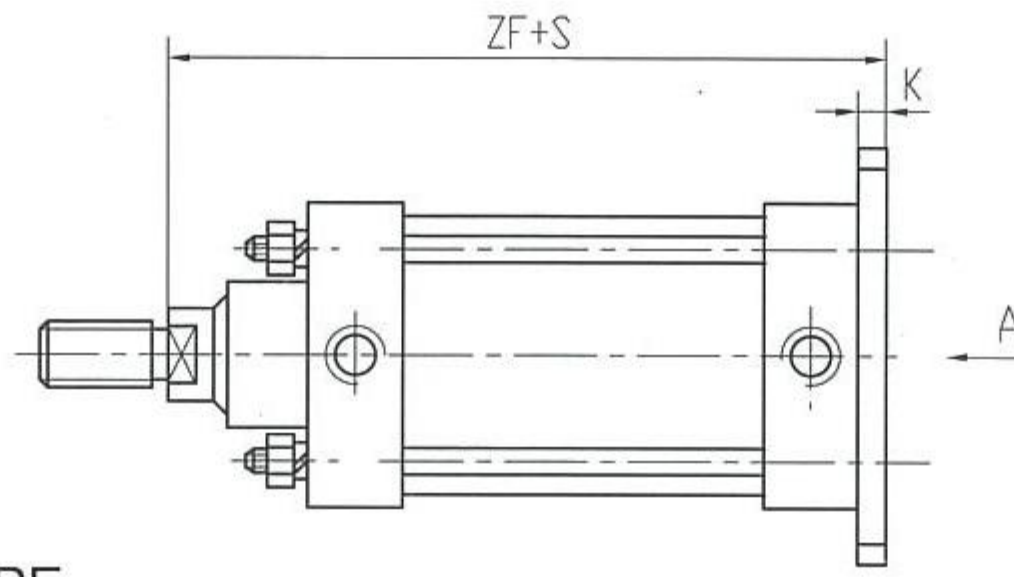
Standard Type



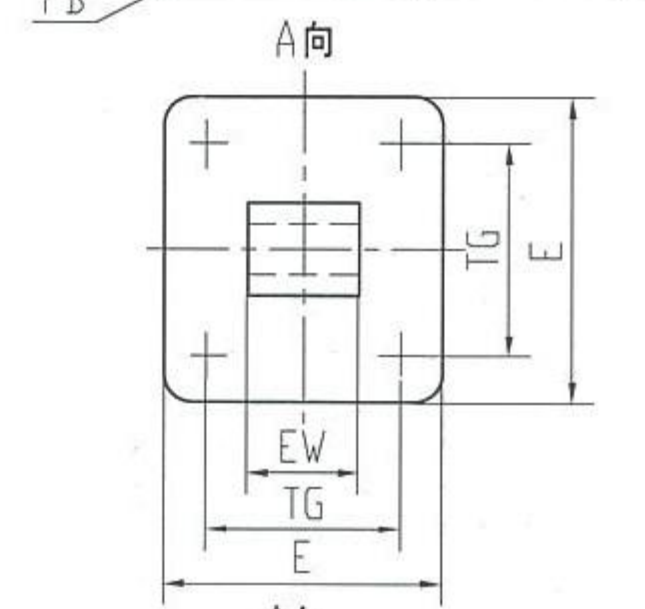
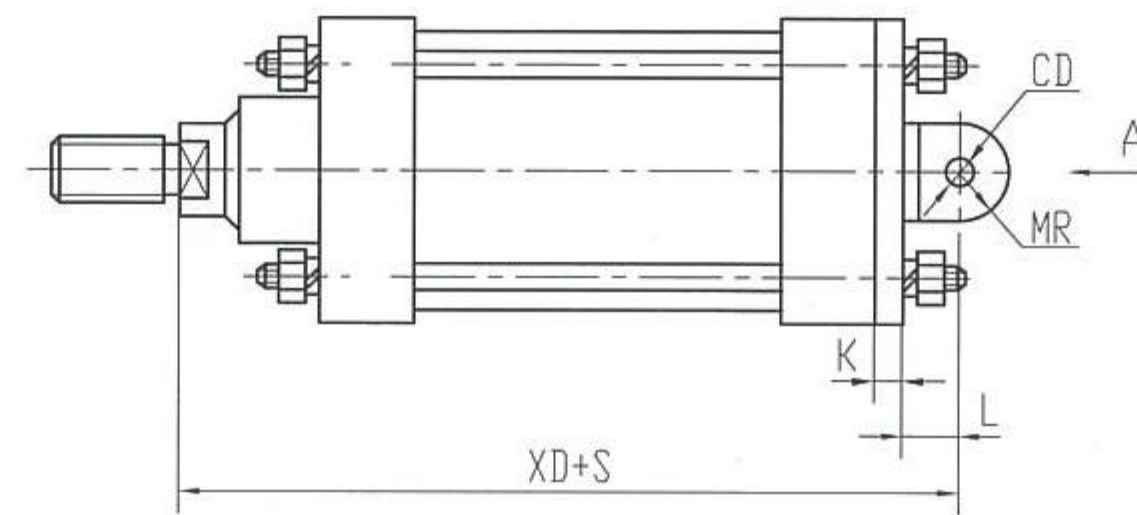
前法兰式 MF1
ROD SIDE FLANGE TYPE



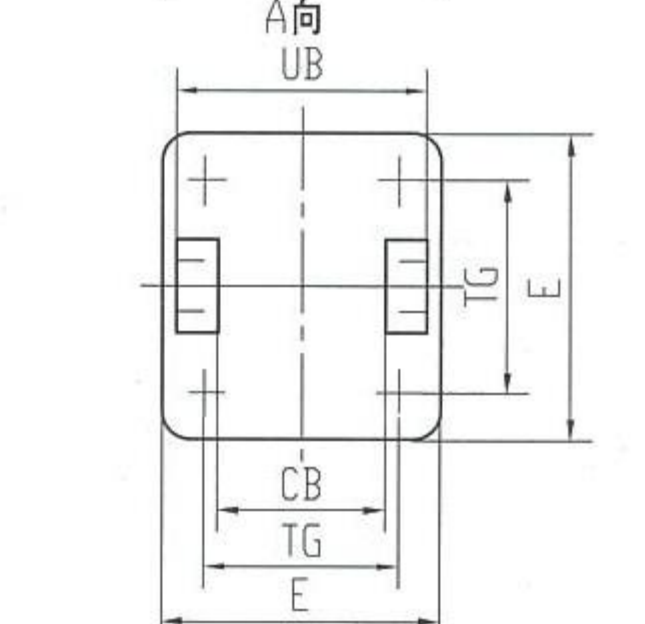
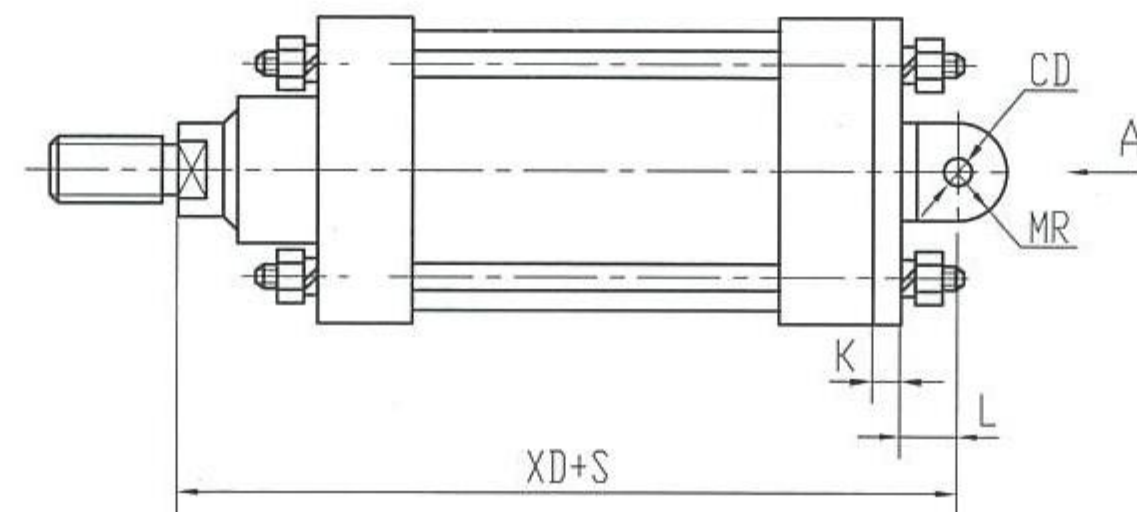
后法兰式 MF2
HEAD SIDE FLANGE TYPE



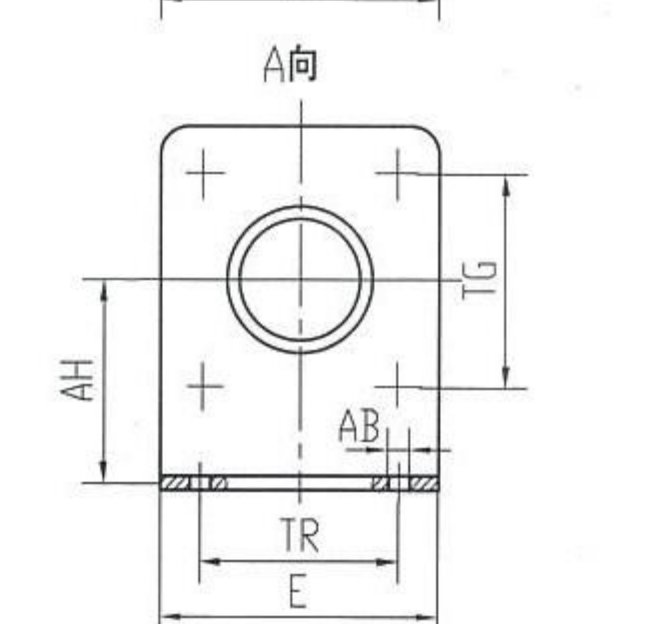
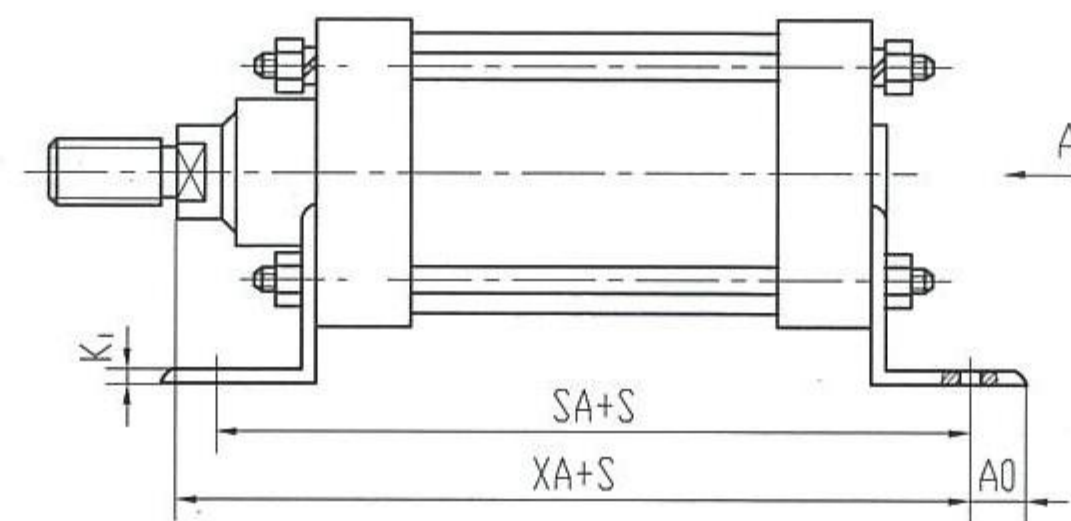
尾部单耳式 MP4
ROD END SINGLE CLEVIS TYPE



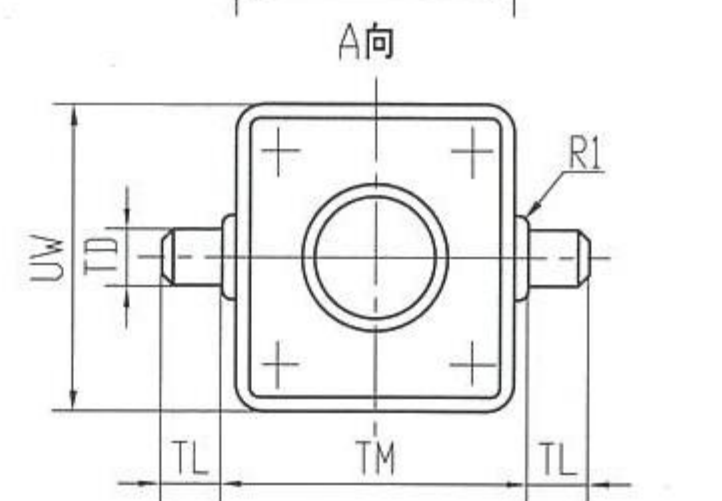
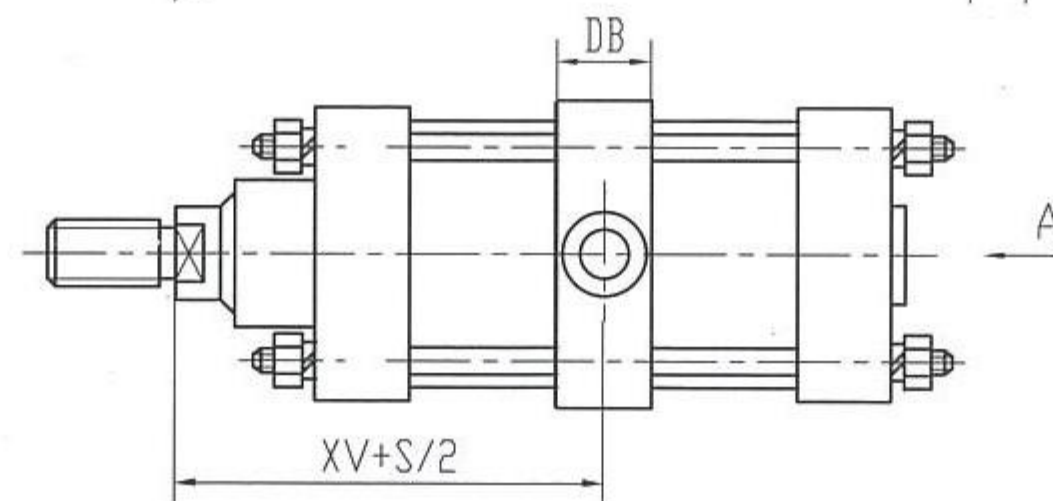
尾部双耳式 MP2
ROD END DOUBLE CLEVIS TYPE



脚架式 MS1
VERTICAL TO AXIS TYPE



中间摆轴式 MT4
INTERMEDIATE
MOVABLE TRUNNION TYPE



尺寸表 DIMENSION TABLE

缸径 BORE	KK	∅d	∅B	EE	DD	AM		WH		ZL		HG	TG	E	ZB		VD		I
						B II	A II	B II	A II	B II	A II				B II	A II	B II	A II	
∅32	M10 × 1.25	12	26	G1/8"	M5	22	14	26	22	120	94	3	34	48	123	93	17	10	15
∅40	M12 × 1.25	16	34	G1/4"	M6	24	16	30	25	135	110	3	40	55	138	113	21	10	18
∅50	M16 × 1.5	25	45	G1/4"	M6	32	22	35	25	145	110	3	48	65	148	113	26	10	18
∅63	M16 × 1.5	25	45	G3/8"	M8	32	22	37	25	158	130	3	60	80	161	131	25	10	20
∅80	M20 × 1.5	32	55	G3/8"	M10	40	28	46	29	174	134	4	75	100	178	138	33	14	26
∅100	M20 × 1.5	32	55	G1/2"	M10	40	28	51	29	189	155	4	90	115	193	159	34	14	26
∅125	M27 × 2	40	65	G1/2"	M12	54	36	65	34	225	175	4	112	145	229	179	40	14	33
∅160	M36 × 2	50	80	G3/4"	M16	72	50	80	35	260	196	4	145	190	264	200	48	15	35
∅200	M36 × 2	50	80	G3/4"	M16	72	50	95	40	275	210	5	180	225	280	215	55	20	35
∅250	M42 × 2	70	110	G1"	M20	84	56	110	45	300	225	5	225	280	305	230	71	25	45
∅320	M48 × 2	90	125	G1"	M24	96	63	125	54	335	254	5	280	350	340	259	85	25	53

缸径 BORE	W		UF	TF	R	FB	K	ZF		EW	CD	MR	L	XD		UB	CB	H	
	B II	A II						B II	A II					b12	H9			B II	A II
∅32	16	12	80	64	32	7	10	130	100	26	10	10	12	142	112	45	26	22	16
∅40	20	15	90	72	36	9	10	145	120	28	12	12	15	160	135	52	28	25	20
∅50	25	15	110	90	45	9	10	155	120	32	12	12	15	170	135	60	32	25	20
∅63	25	13	125	100	50	9	12	170	140	40	16	15	20	190	160	70	40	30	25
∅80	30	13	155	126	63	12	16	190	150	50	16	15	20	210	170	90	50	35	25
∅100	35	13	180	150	75	14	16	205	171	60	20	20	25	230	196	110	60	35	30
∅125	45	14	215	180	90	16	20	245	195	70	25	25	30	275	226	130	70	40	35
∅160	60	15	270	230	115	18	20	280	216	90	30	30	35	315	251	170	90	45	40
∅200	70	15	315	270	135	22	25	300	235	90	30	30	35	335	270	170	90	45	40
∅250	80	15	385	330	165	26	30	330	255	110	40	40	45	375	300	200	110	49	44
∅320	90	19	470	400	200	33	35	370	289	120	45	45	50	420	339	220	120	55	50

缸径 BORE	AH	TR	AB	SA		XA		AO	K ₁	UW	TD	R ₁	TL	TM	XV		DB	QGB II 气缸重量kg the weight
				B II	A II	B II	A II								B II	A II		
∅32	32	32	7	142	116	144	114	11	4	46	12	1	12	50	73	56	25	1.16+0.0042s
∅40	36	36	9	161	141	163	138	12	5	58	16	1.5	16	63	82.5	67.5	30	1.81+0.0055s
∅50	45	45	9	170	145	175	140	15	6	70	16	1.5	16	75	90	67.5	30	2.81+0.0088s
∅63	50	50	9	185	169	190	160	13	6	85	20	1.5	20	90	97.5	75.5	35	4.43+0.0106s
∅80	63	63	12	210	187	215	175	19	8	105	20	1.5	20	110	110	81.5	35	8.14+0.0173s
∅100	71	75	14	220	208	230	196	19	8	126	25	2	25	132	120	92	45	10.92+0.0244s
∅125	90	90	16	250	231	270	220	25	8	155	25	2	25	160	145	104	45	19.56+0.0334s
∅160	115	115	18	300	281	320	256	20	10	195	32	2	32	200	170	115	60	41.72+0.0581s
∅200	135	135	22	320	310	345	280	30	12	240	32	2	32	250	185	135	60	59.98+0.0688s
∅250	165	165	26	350	340	380	305	35	14	300	40	3	40	320	205	135	70	97.64+0.1049s
∅320	200	200	32	390	380	425	344	35	16	380	50	3	50	400	230	154	80	173.99+0.2533s