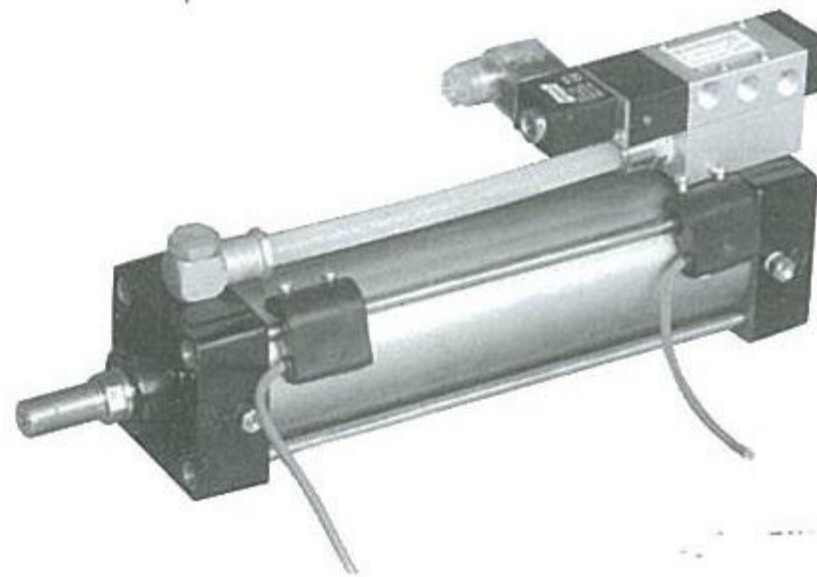
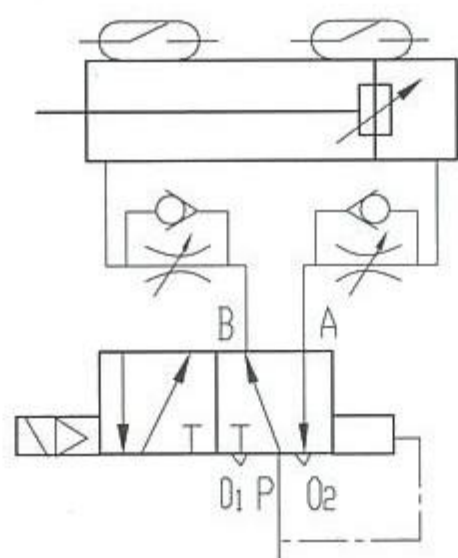


QGB II - KF 组合气缸
QGB II - KF COMBINED CYLINDER

图形符号 / Picture symbol



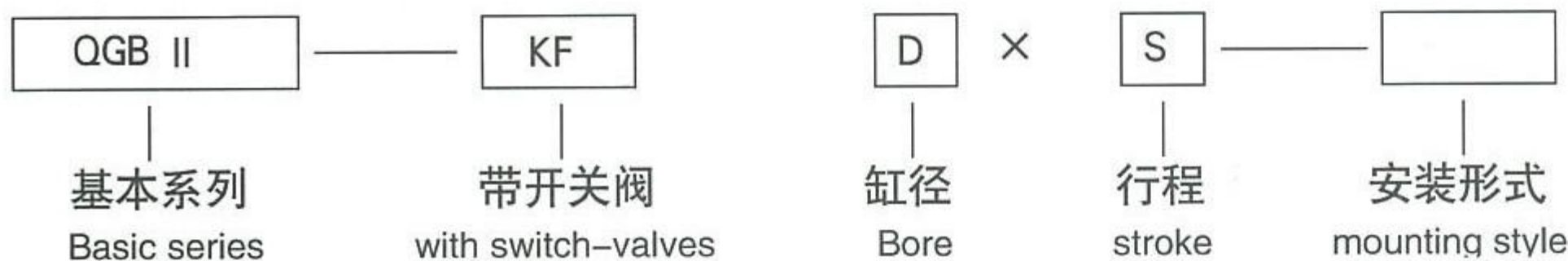
特点

- * 本产品是用 QGB II - K 气缸加电磁换向阀组合而成。
- * 结构紧凑, 使用安装方便, 应用广泛。温度范围 0 ~ 55℃。
- * 安装形式与安装尺寸与 QGB II 系列气缸相同。
- * 小于最小行程需要非标设计。

Features

This is a combination of the QGB II - K series air cylinder and the solenoid control valves .
 Its features are simple in structure, convenient in operation and mounting, widely using, and the working temperature is between 0℃ and 55℃.
 The mounting style and dimensions are the same as QGB II series air cylinder.

型号说明 / Model example



基本参数 / Basic parameter

项目 / project		缸径 / bore						
		32	40	50	63	80	100	125
换向阀 solenoid control valve	通径 / Nominal diameter mm	∅ 4	∅ 4	∅ 4	∅ 6	∅ 6	∅ 12	∅ 12
	电压 / voltage	F.AC(50HZ)220V Fa.DC24V						
磁性感应发讯器 / Magnetic reaction		AC220V DC24V						
最小行程 / Min-stroke		90	90	90	110	110	130	130
尺寸 / dimension	h	91	98	108	132	152	177	207
	g	169	170	170	175	178	211	214

* 其余尺寸与 QGB II 气缸相同 / The other dimensions are the same as QGB II

外形及安装尺寸 / Appearance and installing dimensions

