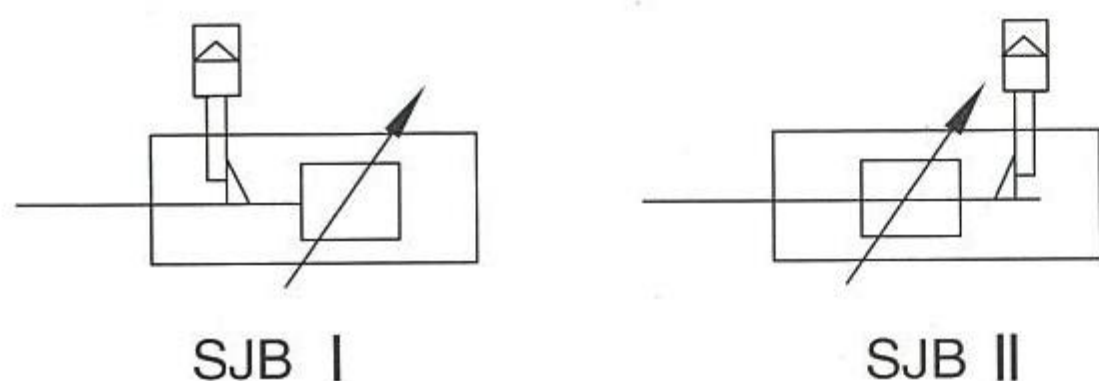


**SJB I (II) 系列前(后)自锁气缸**

**SJB I (II) SERIES FRONT(BACK) AUTO-LOCK CYLINDER**

图形符号 / Drawing symbol



特点 / Feature

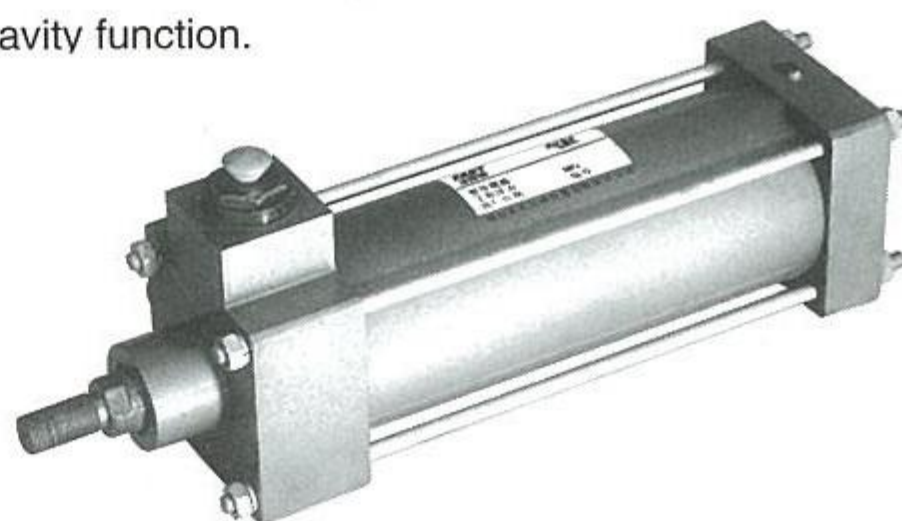
前、后自锁气缸是一种指活塞运行到端点时自锁的一种特殊气动执行元件，在气动系统中起安全保护作用，该气缸带有缓冲结构，使用安装方便。用于垂直或其它方式使用的场合，当系统中突然停气时，活塞在前端或后端由于自锁的作用，所带负载不会在重力的作用下，下落或移动。

Front (back) auto-lock cylinder is a special pneumatic actuator which auto-locked when piston moves to the end point, and acting the safe protection function in pneumatic system, the cylinder has cushion structure, convenience in using and assembling. Used in vertical or other form occasion, when system cut the gas suddenly, because of auto-lock at front or back, the load can't whereabouts or ambulation under the gravity function.

型号说明 / Model example

前自锁气缸 缸径 63 行程 S = 300 安装形式前法兰 SJB I 63 × 300-MF1, 后自锁气缸 缸径 100 行程 500 安装形式中间摆轴 SJB II 100 × 500-MT4

Front auto-lock cylinder bore 63 stroke S = 300 mounting form head side flange SJB I 63 × 300-MF1, Back auto-lock cylinder bore 100 stroke S = 500 mounting form middle stud mount SJB II 100 × 500-MT4

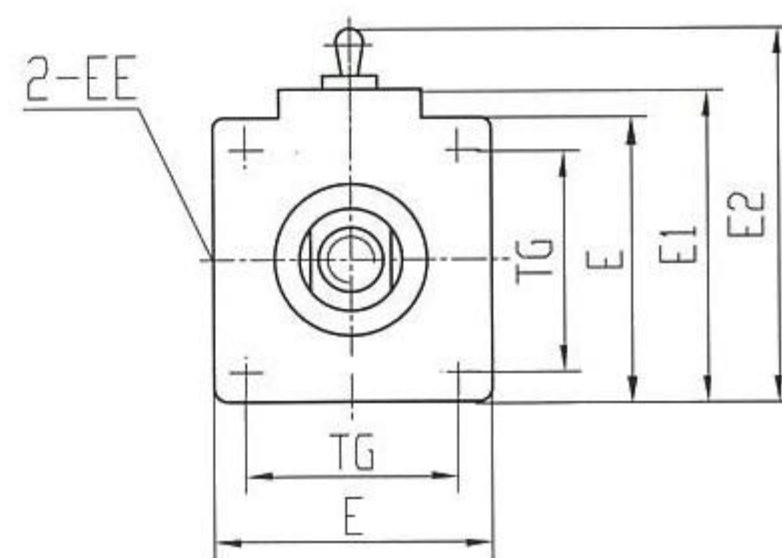
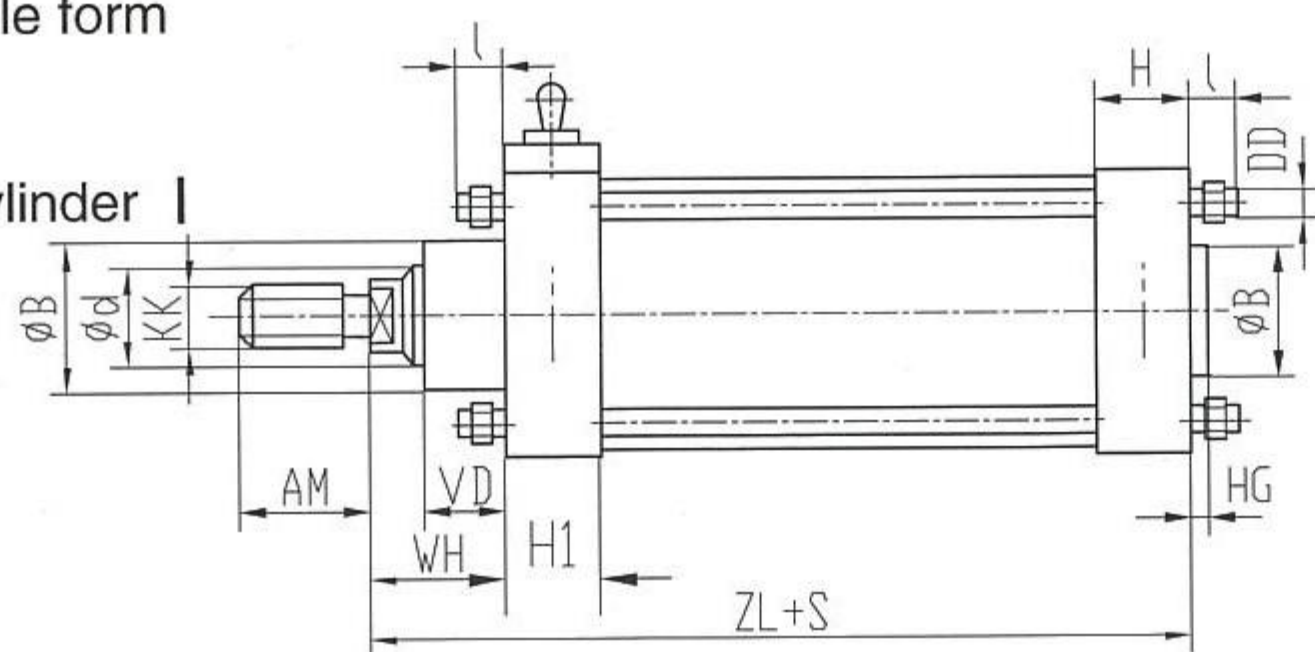


基本参数 / Basic parameter

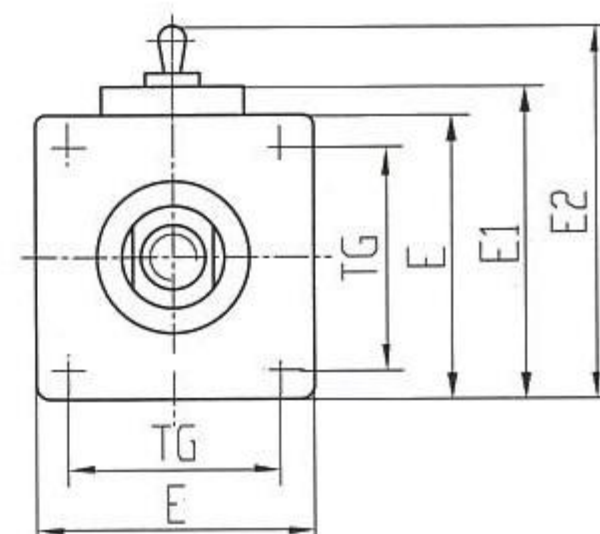
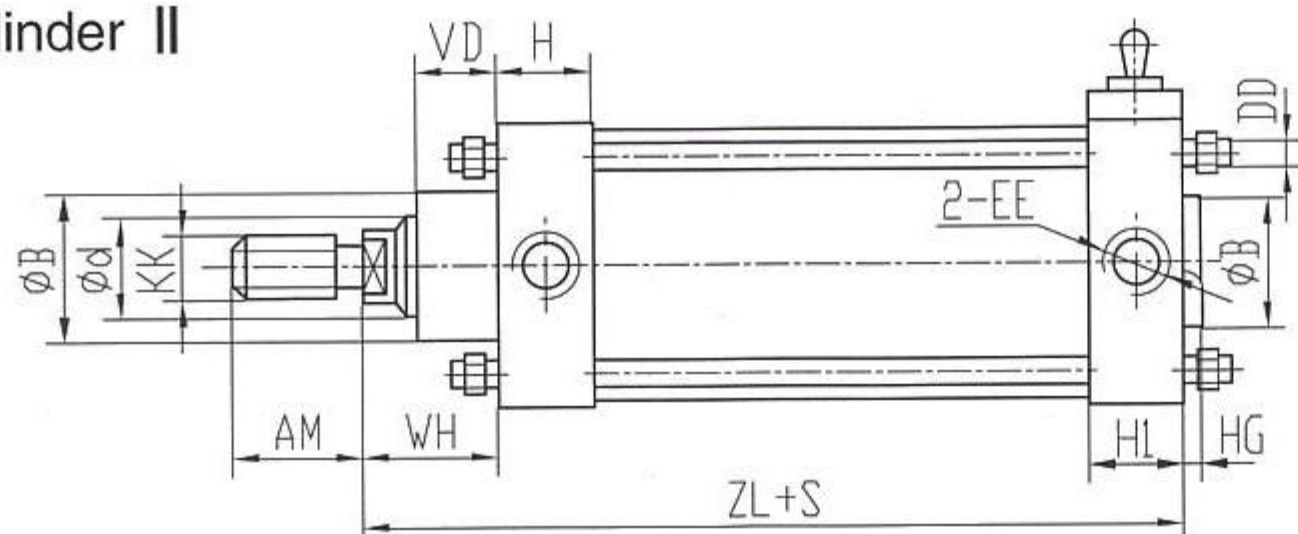
气缸内径 / Bore D (mm)		63	80	100
工作压力 / Operating pressure MPa		0.3-1		
介质温度 / medium temperature (°C)		-25~+80(在不冻结条件下 / (nonfreezing condition))		
最低开锁压力 / Minimum unlocking pressure MPa		0.2	0.2	0.2
行程范围 / Range of stroke mm		≥ 100 ~ ≤ 500	≥ 110 ~ ≤ 600	≥ 110 ~ ≤ 600
理论作用(N)(以0.4MPa计算)/theoretical applied force(Use 0.4MPa count)	推力 Pushing force	1246	2010	3140
	拉力 Pulling force	1050	1688	2819
最大许用负载 Maximum allowable load N	前自锁 before auto-lock	525	650	850
	后自锁 behind auto-lock	525	650	850

安装形式 / Assemble form

前自锁气缸 I  
Front auto-lock cylinder I



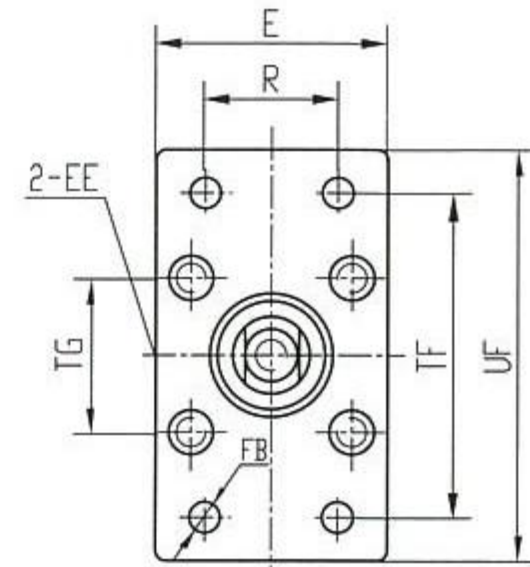
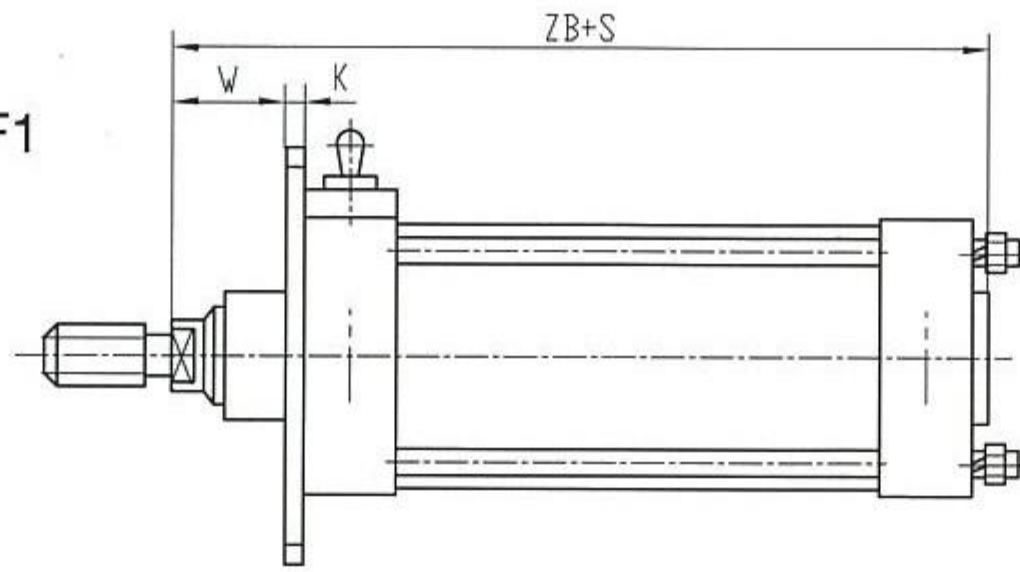
后自锁气缸 II  
Back auto-lock cylinder II



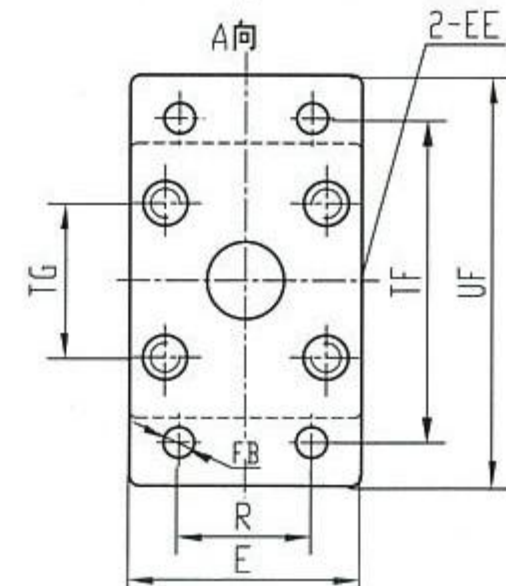
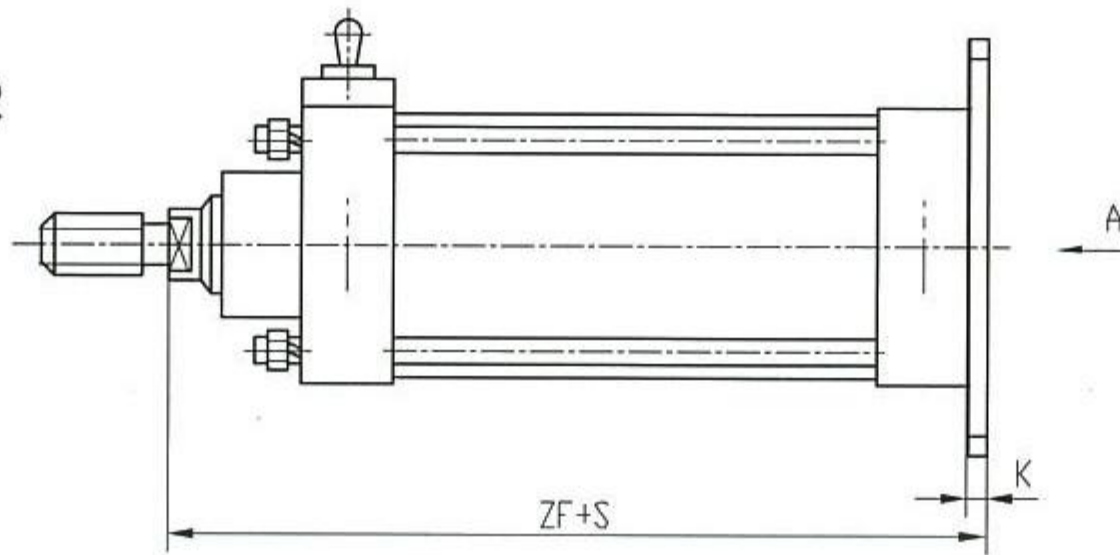


SJB | 前自锁气缸安装形式  
Assemble form of SJB | front auto-lock cylinder

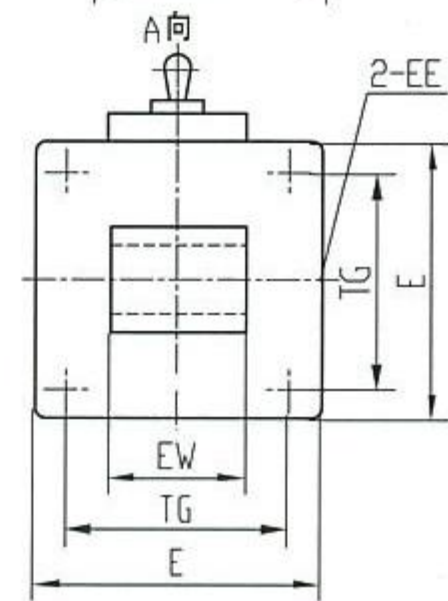
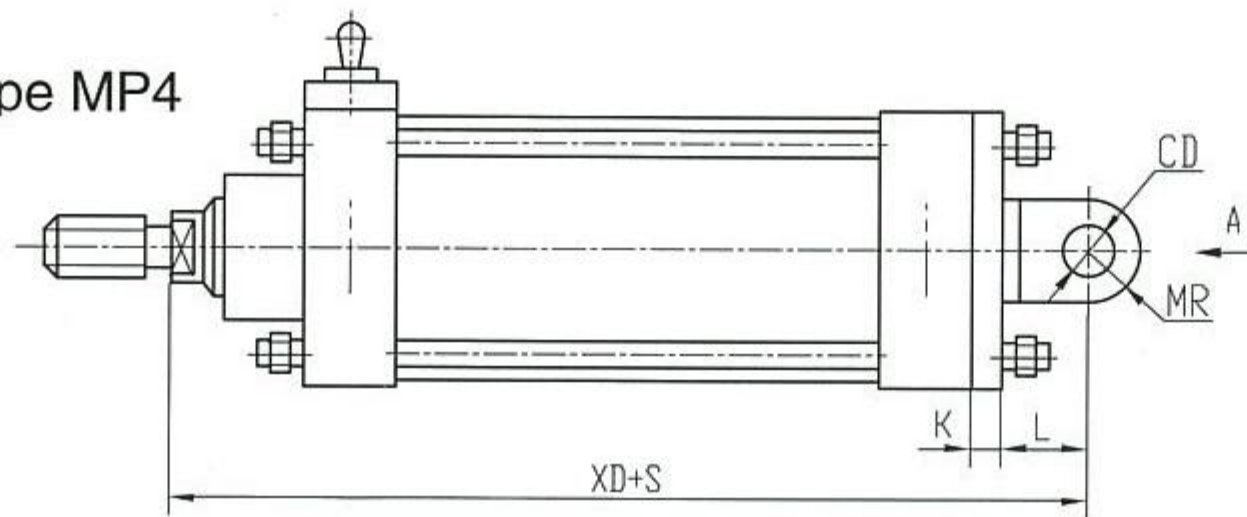
前法兰式 MF1  
Head side flange type MF1



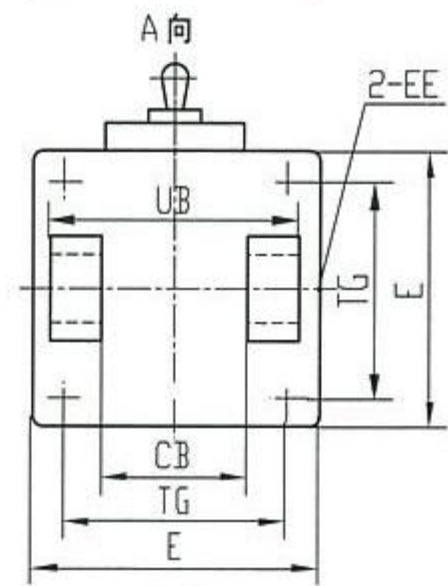
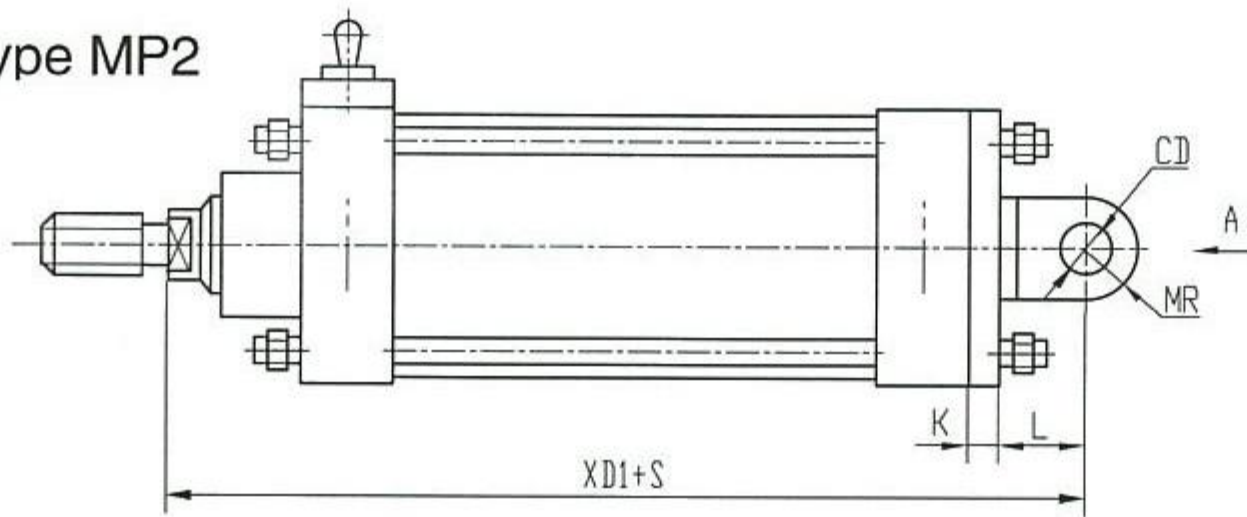
后法兰式 MF2  
End side flange type MF2



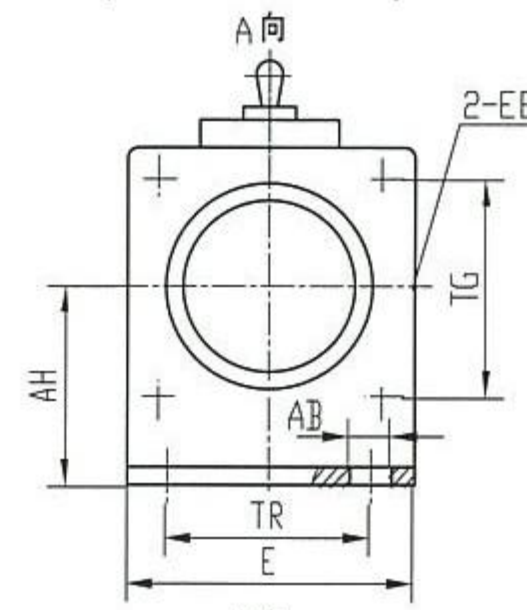
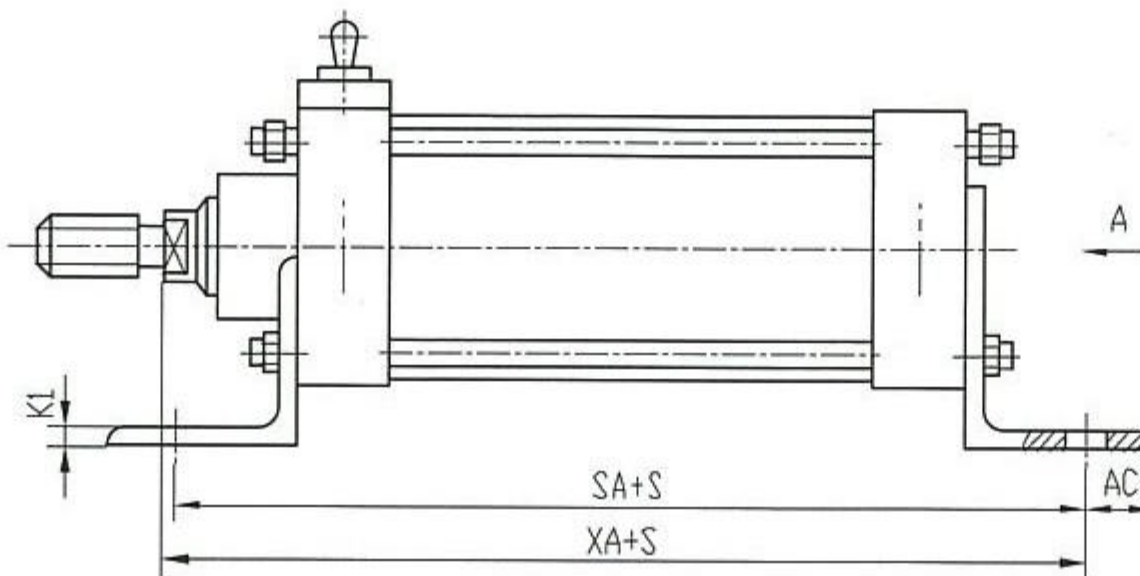
尾部单耳式 MP4  
Rod end single clevis type MP4



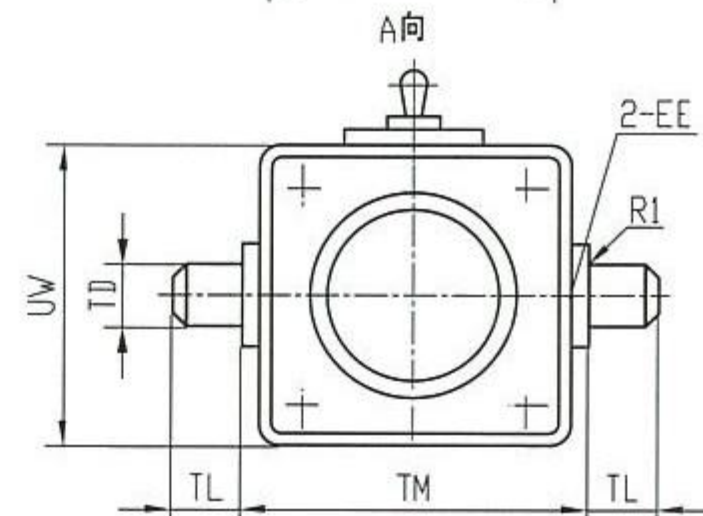
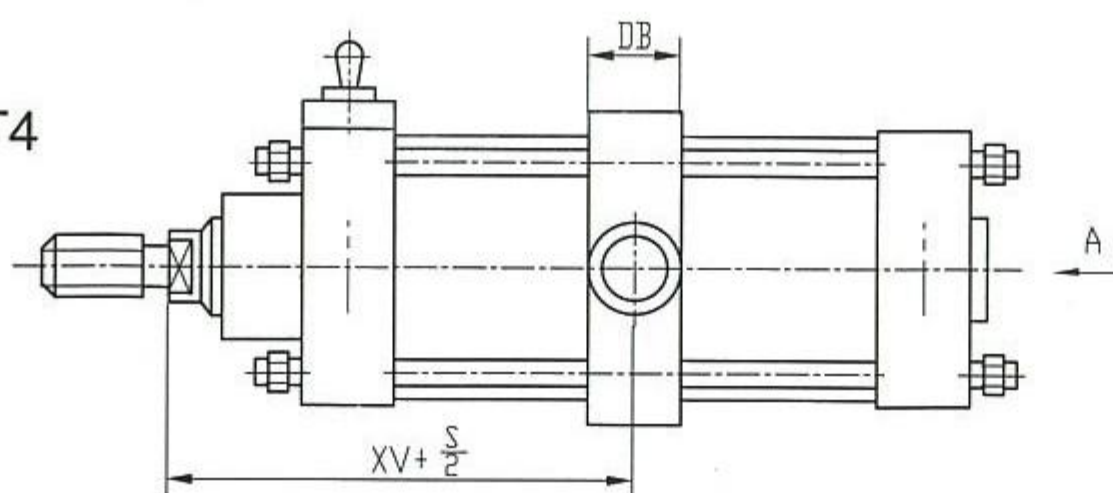
尾部双耳式 MP2  
Rod end double clevis type MP2



脚架式 MS1  
Vertical type MS1



中间摆动式 MT4  
Middle trunnion type MT4

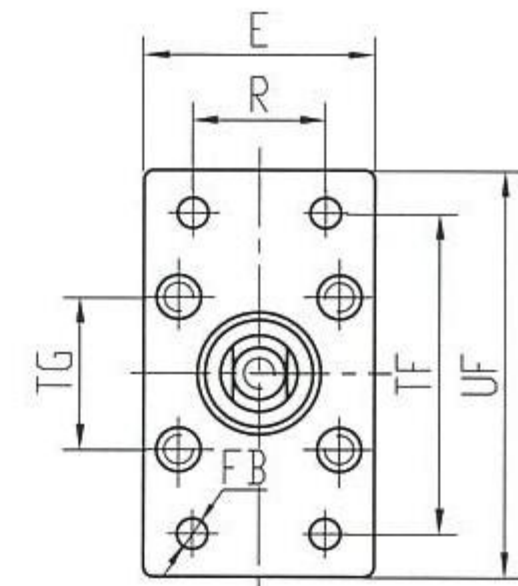
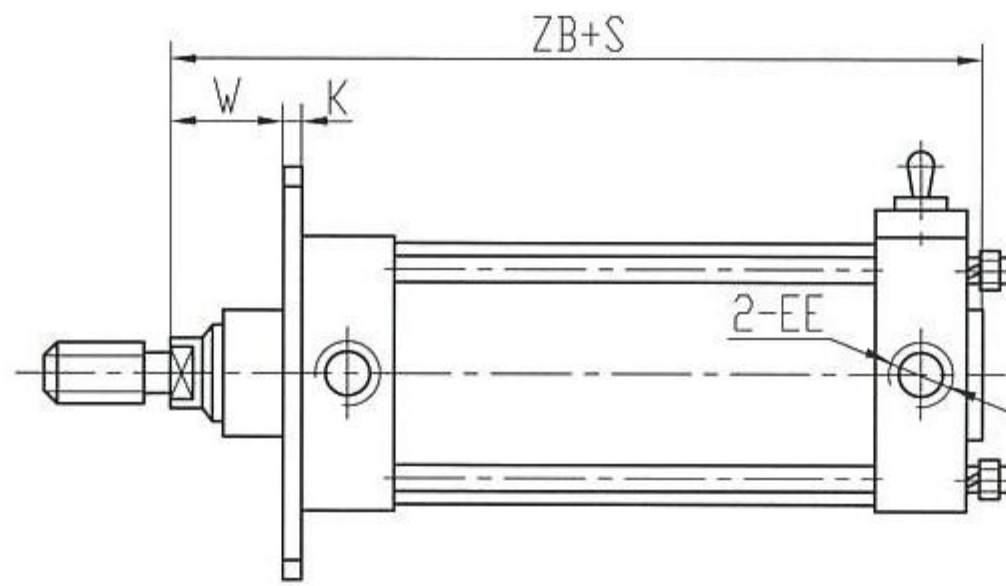




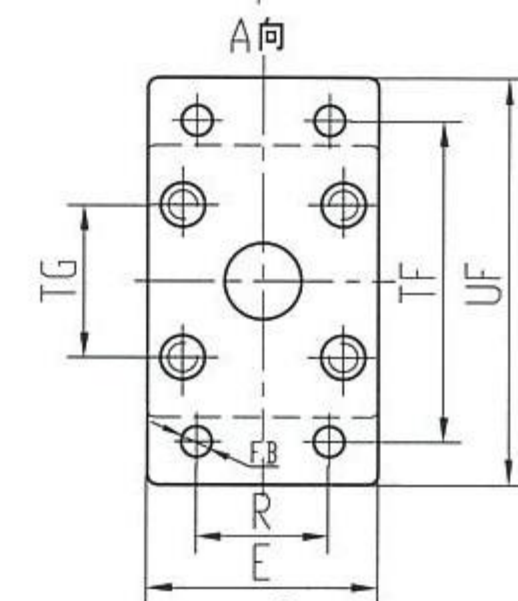
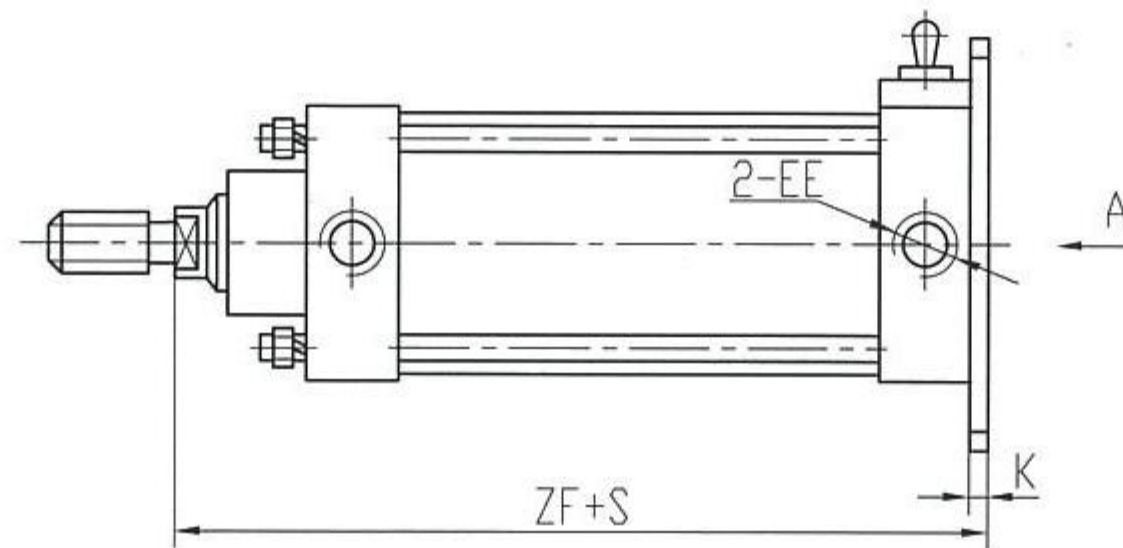
SJB II 后自锁气缸安装形式

Assemble form of SJB II back auto-lock cylinder

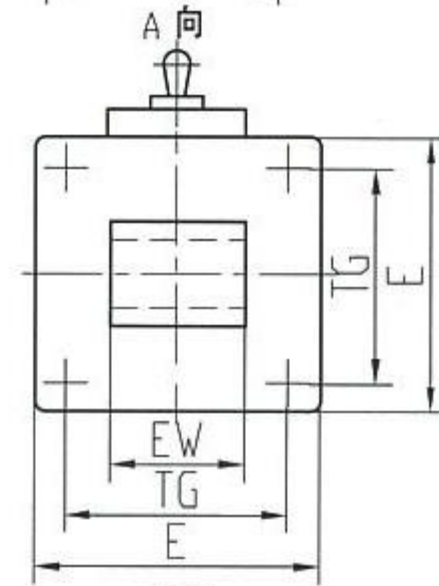
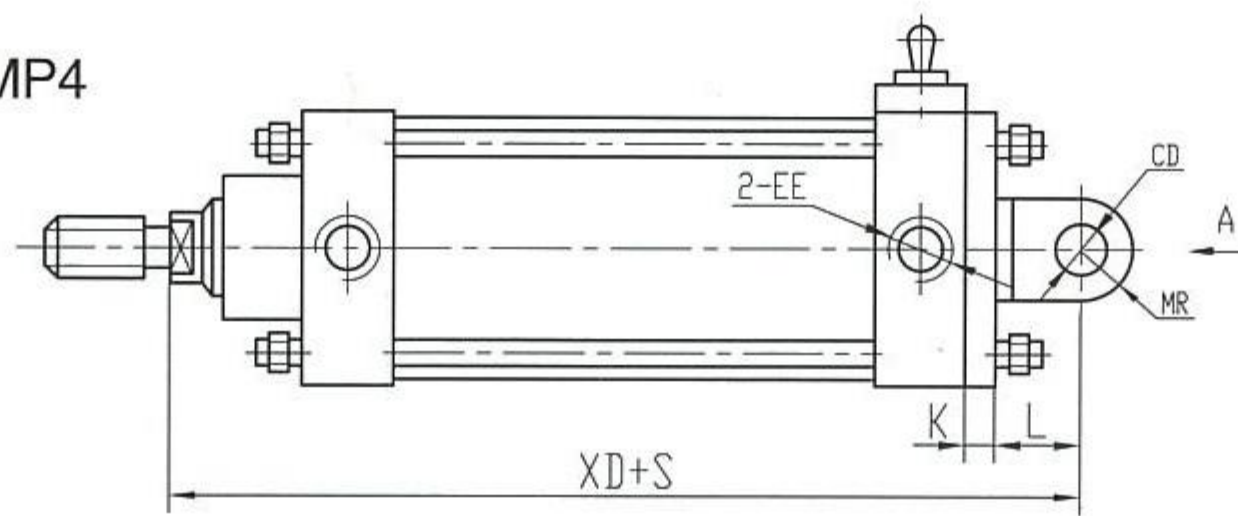
前法兰式 MF1  
Head side flange type MF1



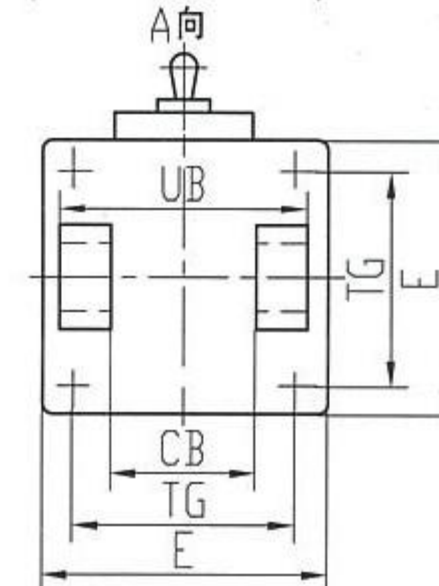
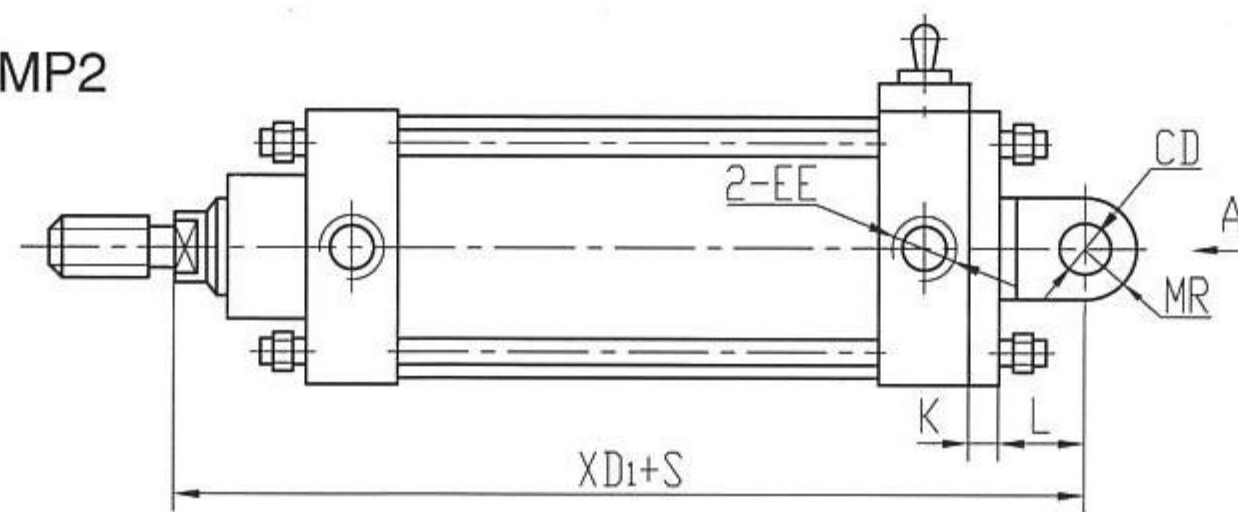
后法兰式 MF2  
End side flange type MF2



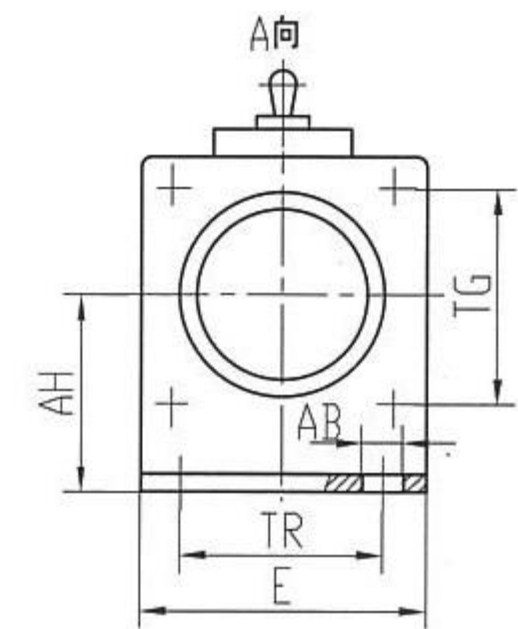
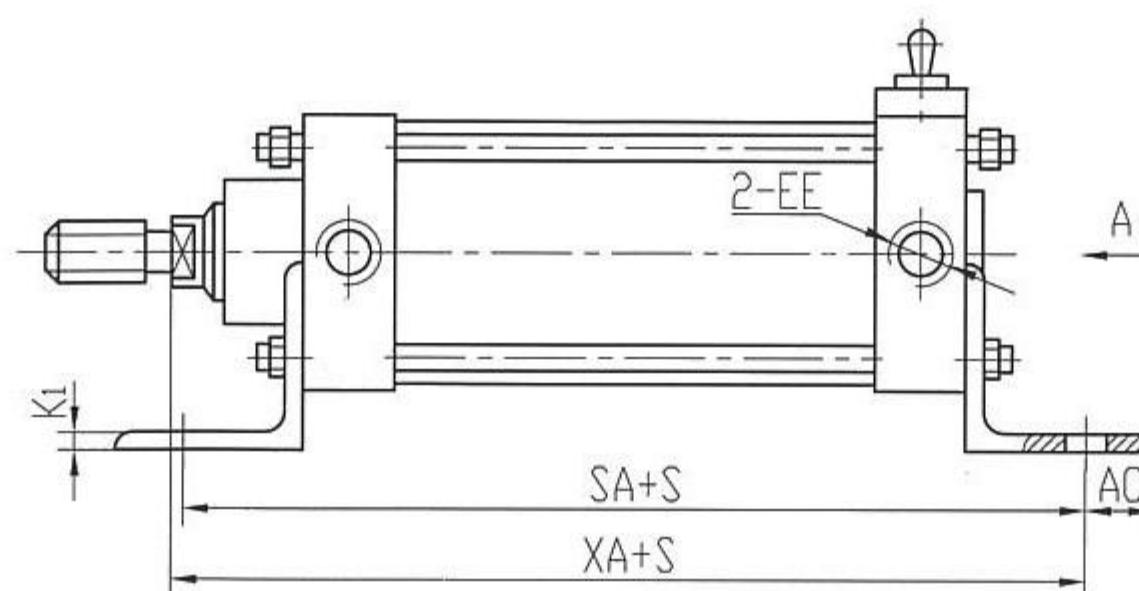
尾部单耳式 MP4  
Rod end single clevis type MP4



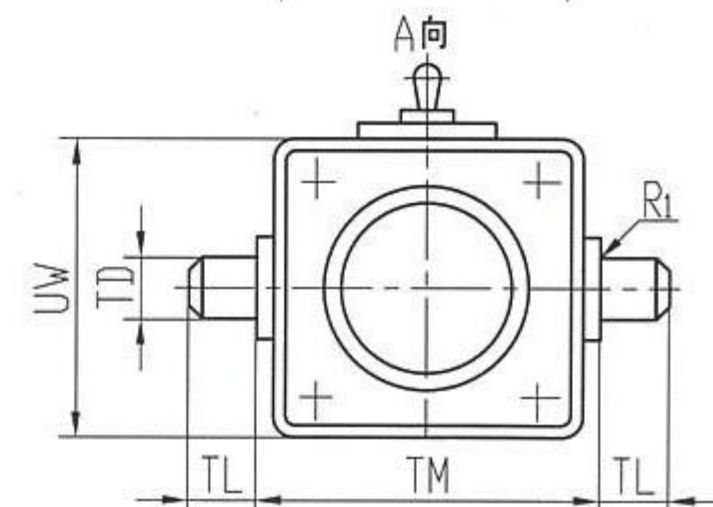
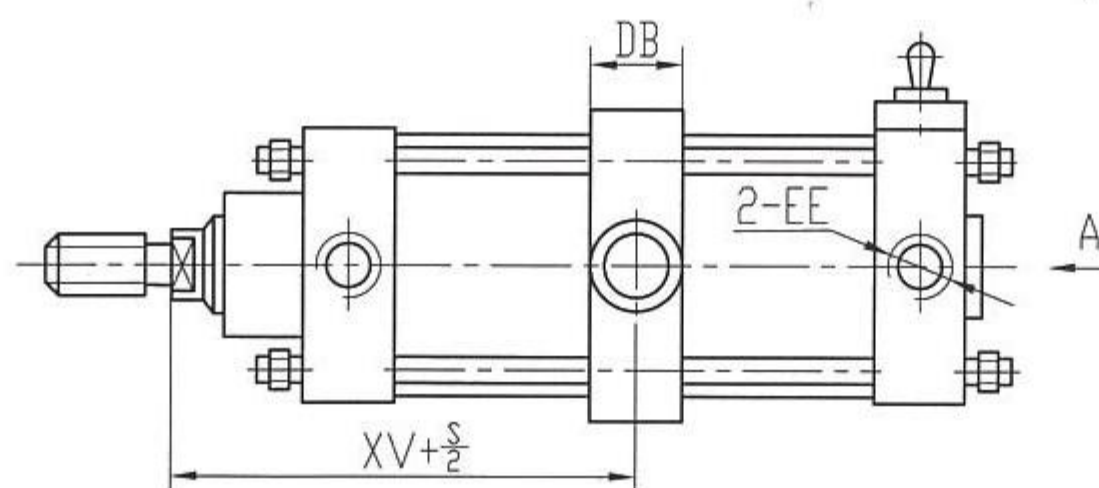
尾部双耳式 MP2  
Rod end double clevis type MP2



脚架式 MS1  
Vertical type MS1



中间摆动式 MT4  
Middle trunnion type MT4





尺寸表 / Dimension table

缸径 bore D	KK	∅d	∅B	EE	DD	AM	WH	ZL		HG	TG	E	ZB	VD	I
								I	II						
∅ 63	M16 × 1.5	25	45	M20 × 1.5	M8	32	37	188	188	3	60	80	191	25	20
∅ 80	M20 × 1.5	32	55	M20 × 1.5	M10	40	46	199	199	4	75	100	203	33	26
∅ 100	M20 × 1.5	32	55	M27 × 2	M10	40	51	214	214	4	90	115	218	34	26

缸径 bore ∅	W	UF	T	R	FB	K	ZF	EW	CD	MR	L	XD XD <sub>1</sub>	UB	CB H <sub>12</sub>	H
								b <sub>12</sub>	H <sub>9</sub>						
∅ 63	25	125	100	50	9	12	200	40	16	15	20	220	70	40	30
∅ 80	30	155	126	63	12	16	215	50	16	15	20	235	90	50	35
∅ 100	35	180	150	75	14	16	230	60	20	20	25	255	110	60	35

缸径 bore ∅	AH	TR	AB	SA	XA	AO	K <sub>1</sub>	UW	TD	R <sub>1</sub>	TL	TM	XV		DB	E <sub>1</sub>	E <sub>2</sub>	H <sub>1</sub>
													I	II				
∅ 63	50	50	9	215	220	13	6	85	20	1.5	20	90	127.5	97.5	35	124	156	60
∅ 80	63	63	12	235	240	19	8	105	20	1.5	20	110	145	110	35	140	175	60
∅ 100	71	75	14	245	255	19	8	126	25	2	25	132	155	120	45	147	185	60