

**ZDG 系列自动往复气缸**

**ZDG SERIES AUTO-RECIPROCATING CYLINDER**

**特点 / Feature**

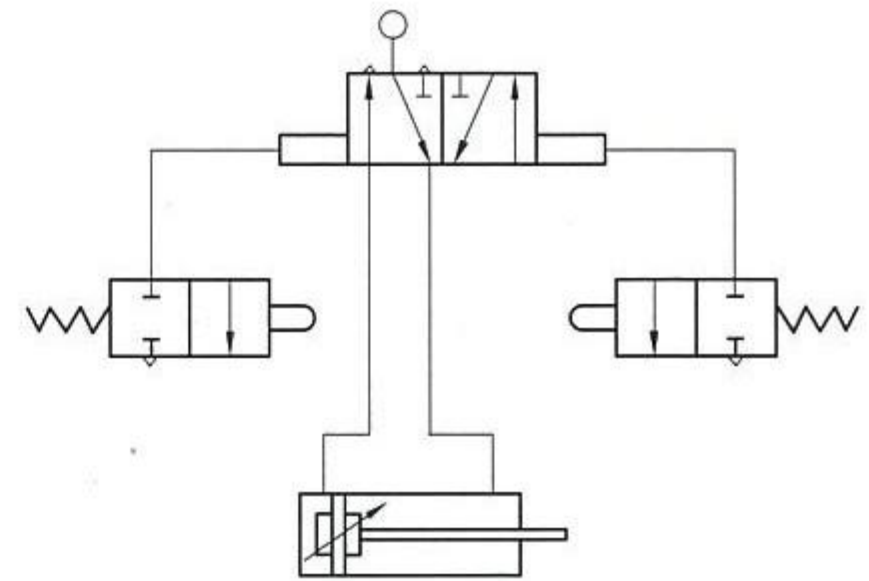
- \* 无须磁性开关, 电磁阀等, 只须接通一个工作气源, 即能实现自动往复动作。
- \* 若进气口装节流阀, 可调节换向动作频率, 调节范围较大。利用两个排气消声节流阀也可调节动作频率并可得到活塞杆进出的不同速度。
- \* 行程较短时即为振动气缸。
- \* 采用无油润滑方式。活塞杆镀铬。

The cylinder reciprocates through the source of the gas, without magnetic switch, solenoid valves, etc.

If assembling the throttle valve in the inlet port, the valve can adjust the frequency of action, the adjusting range is large. Using the two throttle valves to adjust the frequency of action and the speed of rod.

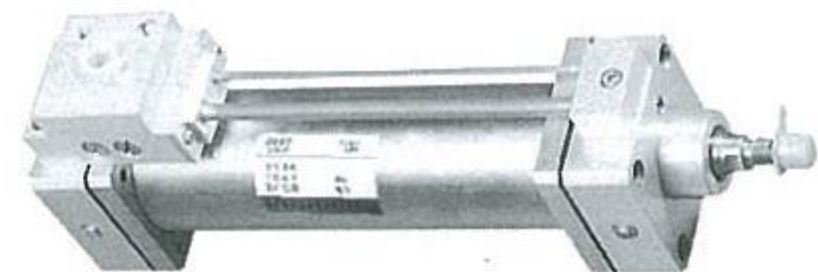
It's a vibrating cylinder when the stroke is short.  
Oil-less, the piston rod is plated hard chromium.

**图形符号 / Drawing symbol**



**型号说明**

Model example



**基本参数 / Basic parameter**

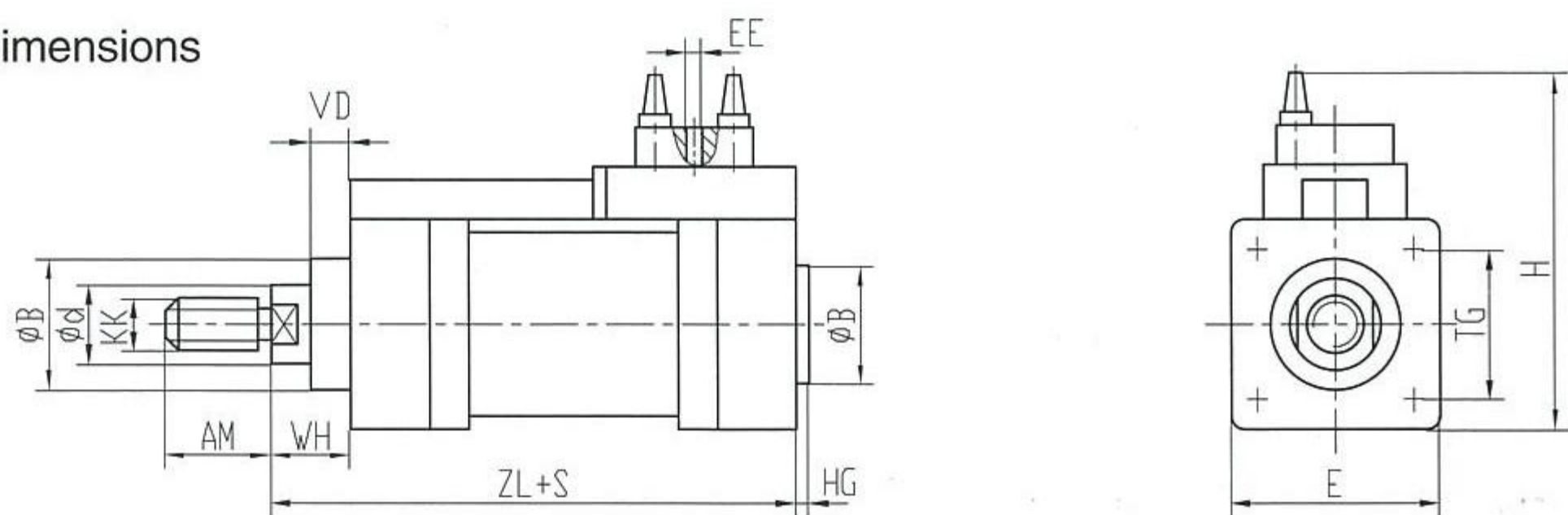
缸径 / bore	工作压 / Working pressure	介质温度 / medium temperature	理论作用力 / theoretical output pulling power (0.4MPa 压力时)N		最高频率 / max frequency (行程 / stroke s=100, 压力 / pressure 0.4MPa)	行程范围 / Scope of stroke
			推力 / Pushing force	拉力 / Pulling force		
50	0.2 ~ 1MPa	-25 ~ 80°C (在不冻结条件 / nonfreezing condition)	785	705	约 180 次 / min	20 ≤ S ≤ 600
63			1246	1121	约 120 次 / min	20 ≤ S ≤ 800
80			2010	1814	约 90 次 / min	20 ≤ S ≤ 1200

**外形及安装尺寸**

**Conformation & mounting dimensions**

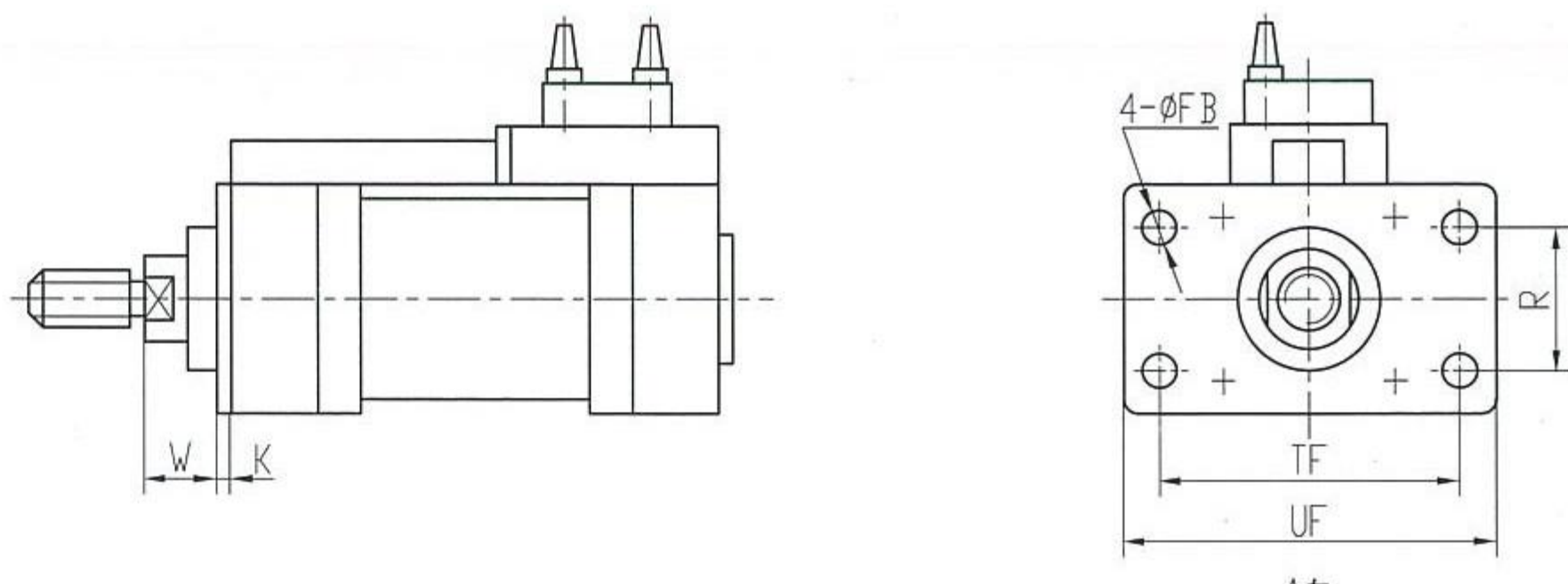
**基本型**

Standard type

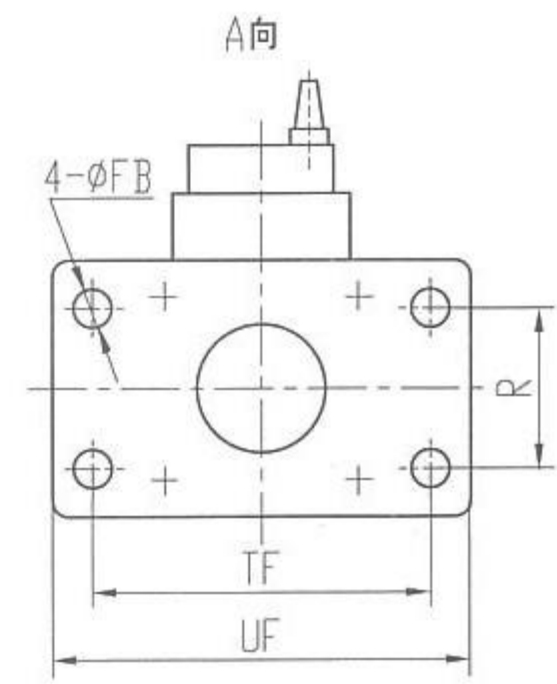
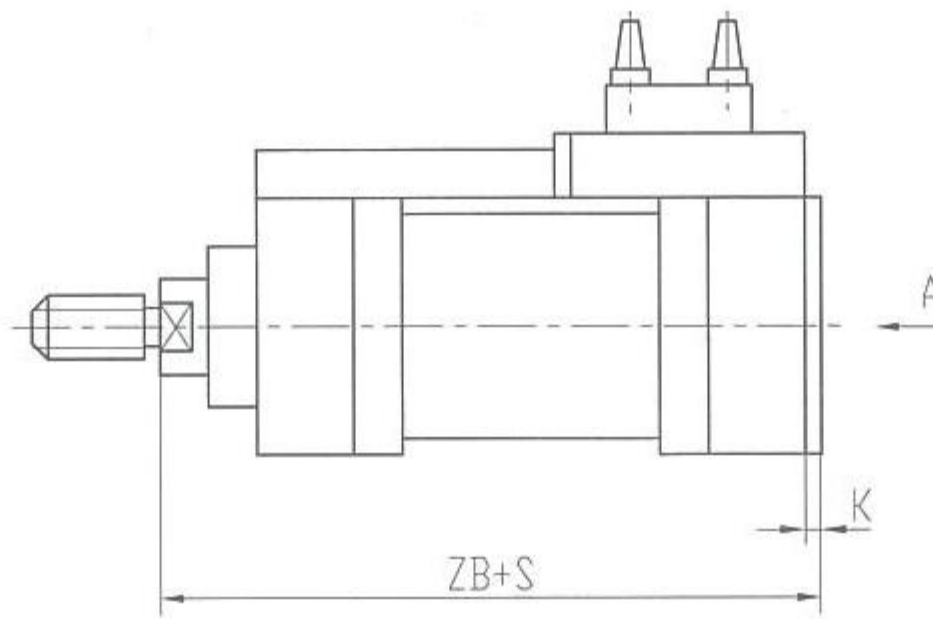


**前法兰式 MF1**

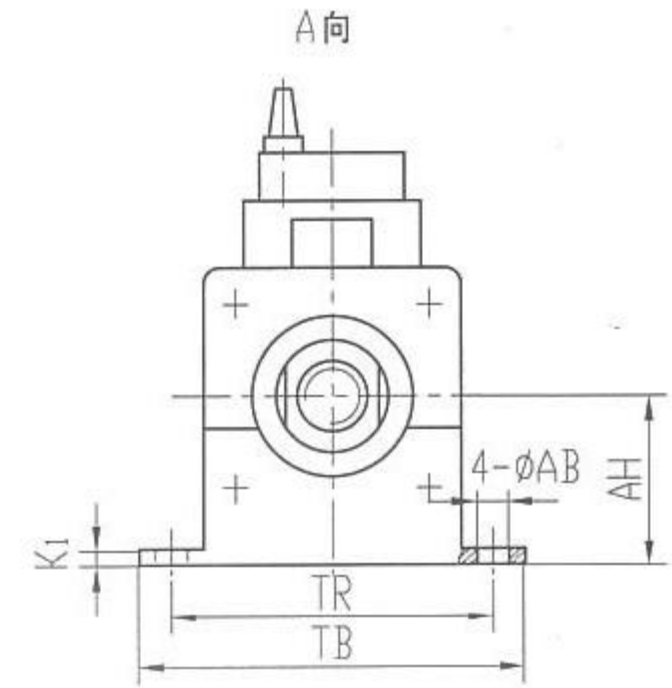
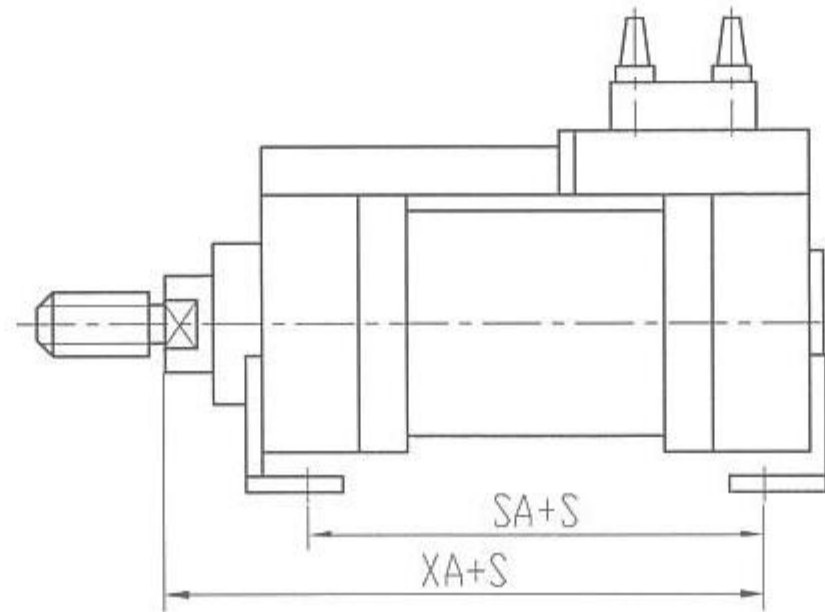
Head side flange type MF1



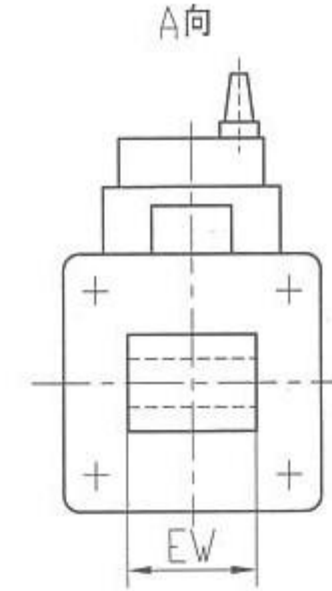
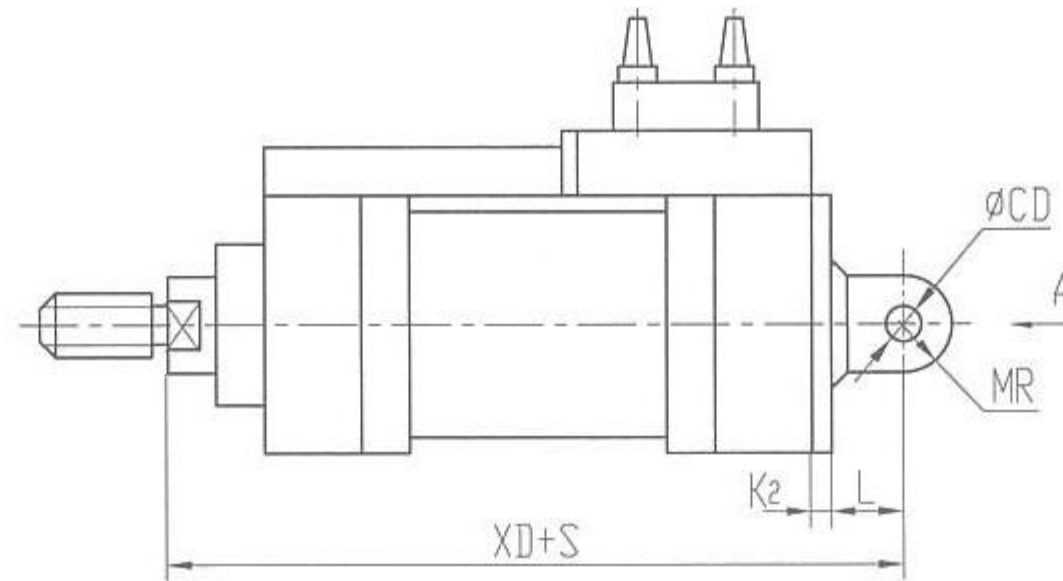
后法兰式 MF2  
End side flange type MF2



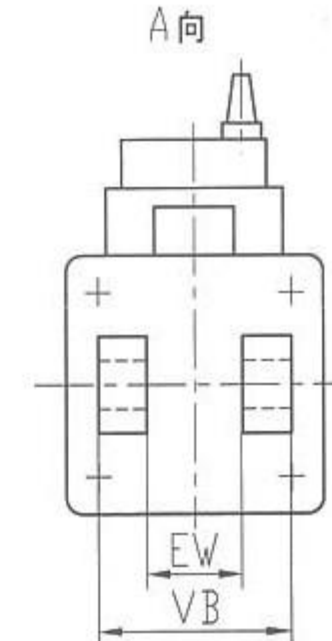
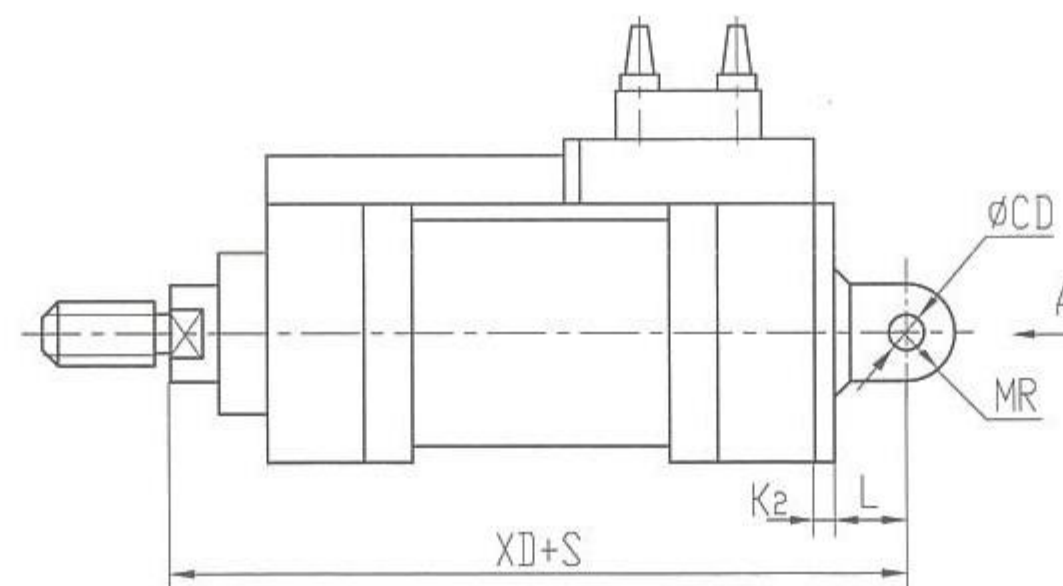
脚架式 MS1  
Vertical type MS1



尾部单耳式 MP4  
Rod end single clevis type MP4



尾部双耳式 MP2  
Rod end double clevis type MP2



尺寸表(单位: mm)/dimension table

缸径/boreφD	KK	φd	φB	EE	AM	WH	ZL	HG	TG	E	W	CD	MR	EW	K <sub>2</sub>	L
50	M12 × 1.25	16	30	M16 × 1.5	24	25	125	3	54	70	15	12	12	32	10	15
63	M14 × 1.5	20	40	M16 × 1.5	28	33	133	3	60	80	21	16	15	40	12	20
80	M16 × 1.5	25	50	M16 × 1.5	32	34	134	4	76	100	18	16	15	50	16	20

缸径/boreφD	K	UF	TF	R	FB	ZB	SA	XA	AB	TR	AH	K <sub>1</sub>	XD	VB	H	VD	TB
50	10	110	90	45	9	135	70	110	9	100	45	6	150	60	139	15	130
63	12	125	100	50	9	145	70	118	9	110	50	6	165	70	149	21	140
80	16	155	126	63	12	150	70	119	12	130	65	8	170	90	169	21	165