

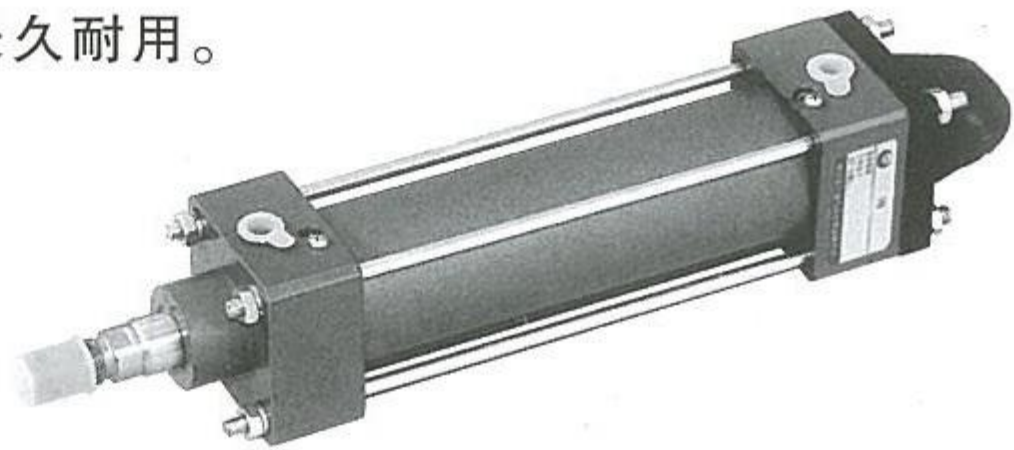
QGB 系列气缸
QGB SERIES CYLINDER

特点

- * 单活塞杆、活塞双向作用，可调缓冲。
- * 传统产品，经过技术更新，性能先进，使用可靠，寿命长久耐用。
- * 各种安装形式，应用范围广。活塞杆镀铬。
- * 活塞运动速度范围 50 ~ 500mm/s。

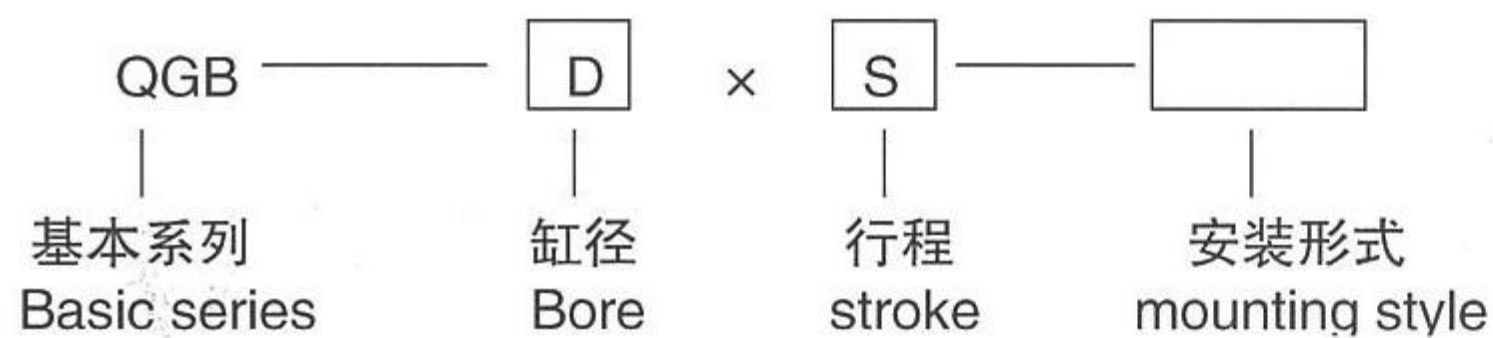
Features

Single rod, double acting and adjusting cushion
 Conventional product, newly innovated, reliable functions and long service life
 Various mounting mode, multiple utilization and chromium rod
 Speed range: 50-500mm/s

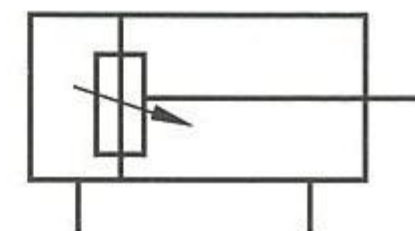


获“机电部优质产品”称号

型号说明 / Model example



图形符号 / Diagrammatic sketch



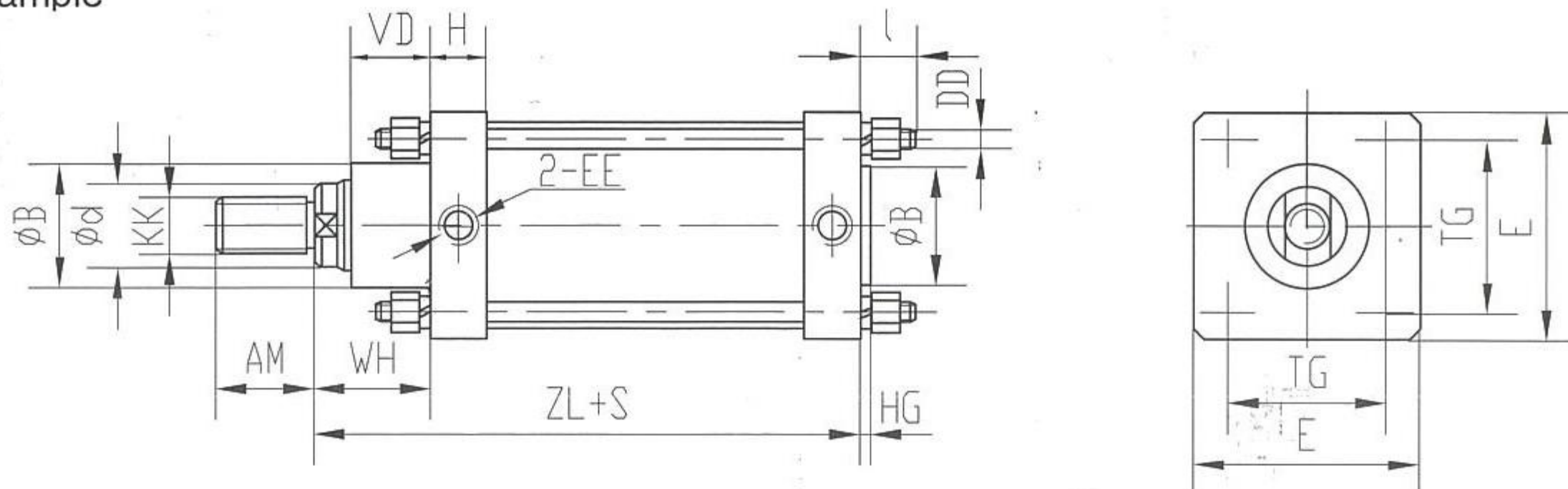
基本参数 / Basic parameters

缸内径 Bore D		40	50	63	80	100	125	160	200	250
行程范围 Scope of stroke (mm)	≥ 50	≥ 50	≥ 60	≥ 60	≥ 80	≥ 80	≥ 80	≥ 100	≥ 120	≥ 120
	≤ 500	≤ 500	≤ 800	≤ 800	≤ 1200	≤ 1200	≤ 3000	≤ 3000	≤ 3000	≤ 3000
工作压力 Working pressure(MPa)	0.15 ~ 1									
介质温度 The temperature of medium(°C)	-25 ~ 80(在不冻结条件下)									
理论作用力(N) (以 0.4MPa 计算) Academic acting fore (the pressure is 0.4Mpa)	推力 / Push	502	785	1246	2010	3140	4906	8038	12560	19625
	拉力 / pull	422	705	1050	1813	2819	4585	7536	12058	18840

注：超出行程范围可协商加工 Note: Consult with the producer in case of special stroke.

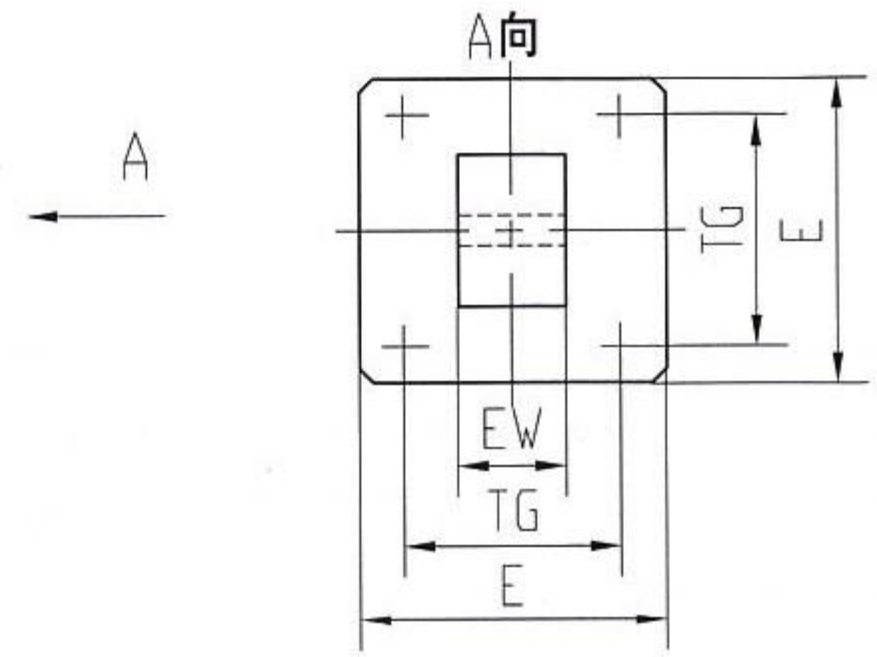
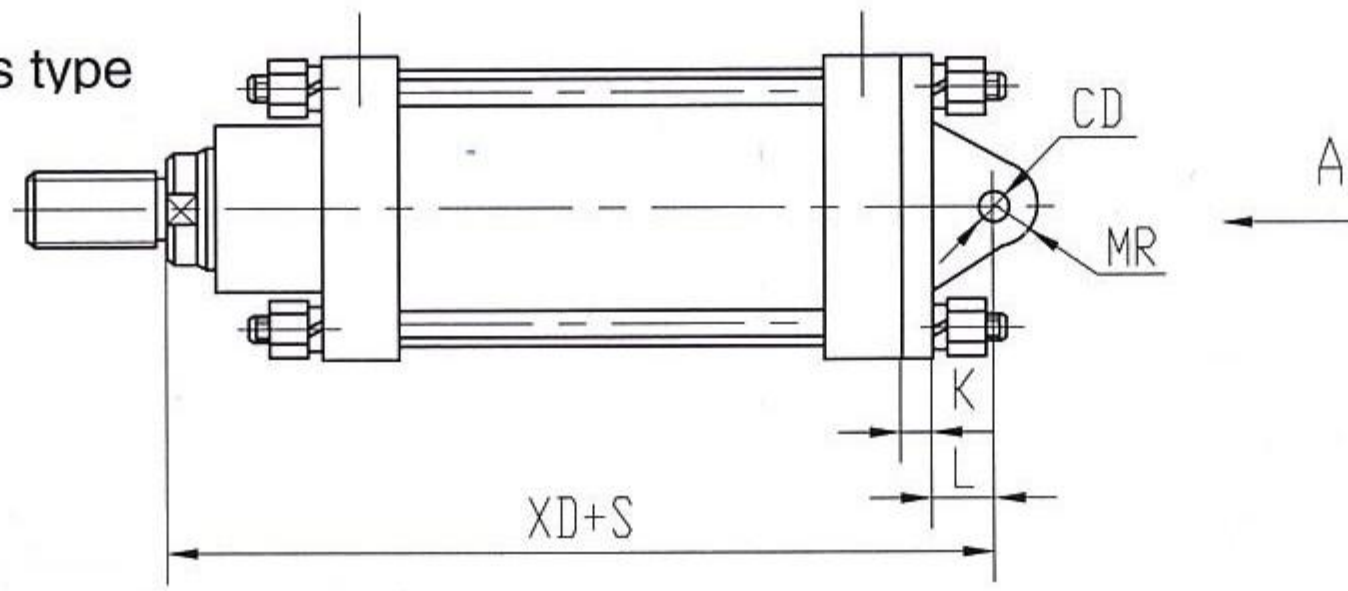
基本型

Model example



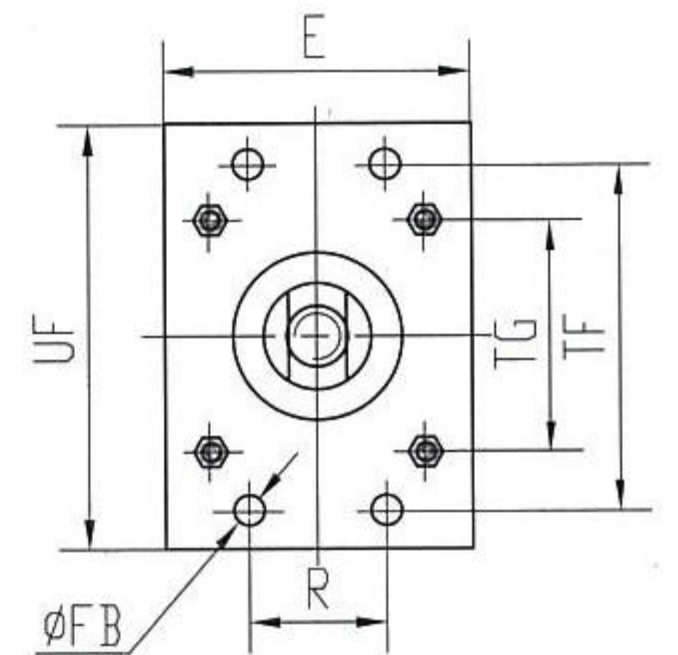
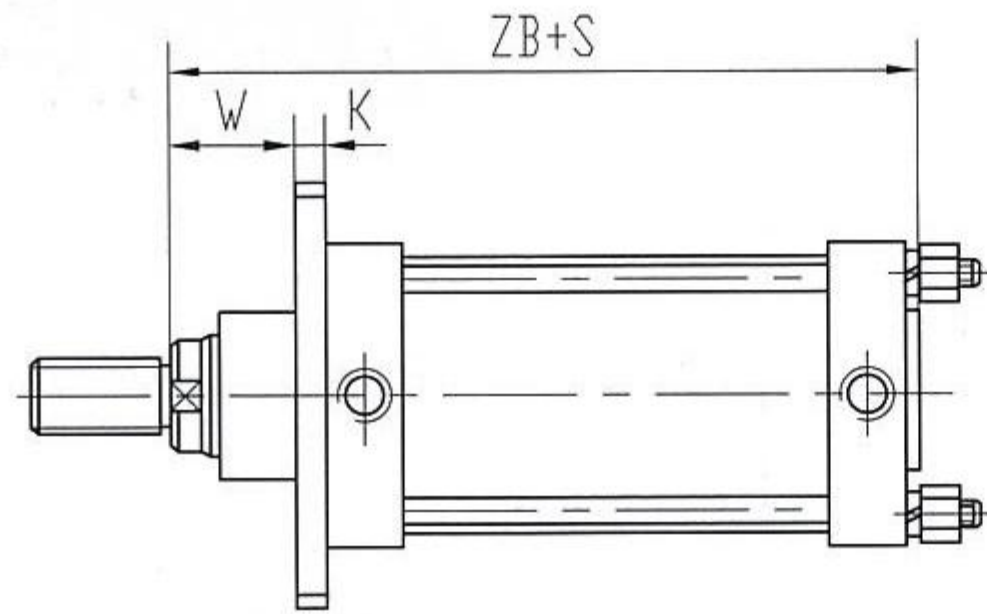
尾部单耳式 S

S rod end single clevis type



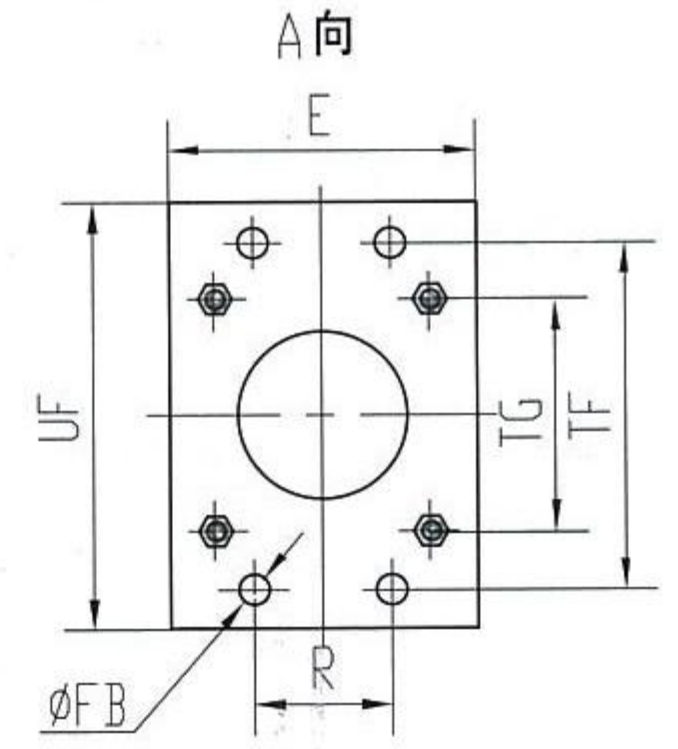
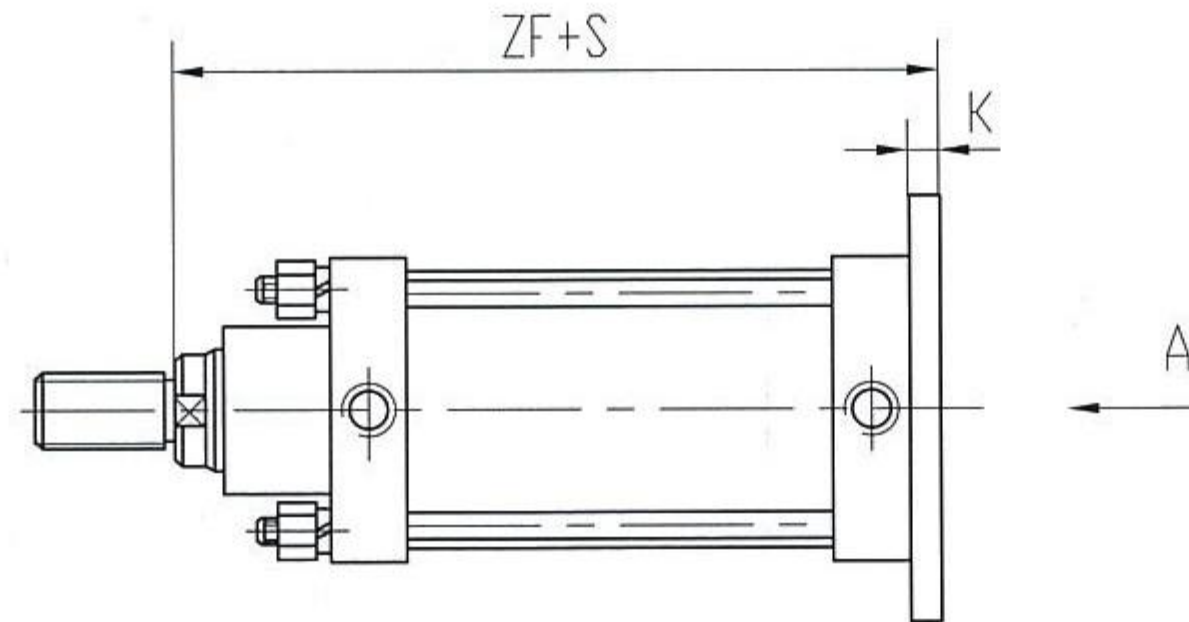
前法兰式 f

f rod side flange type



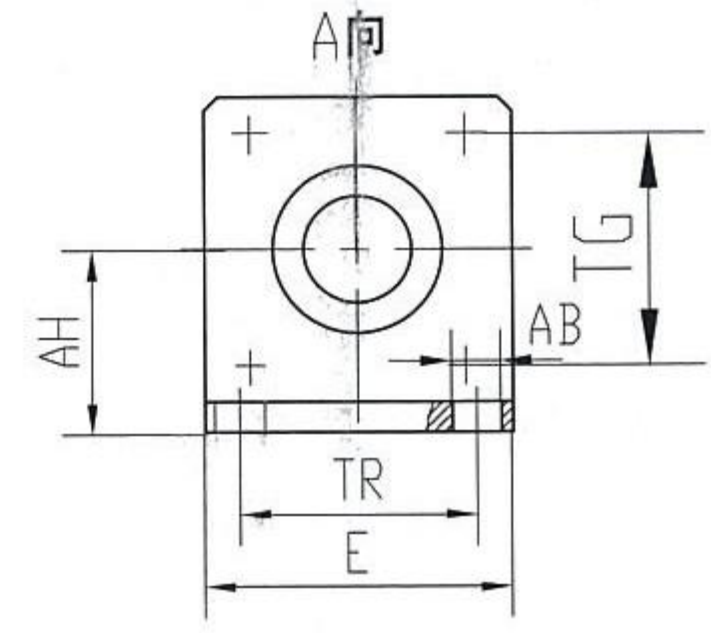
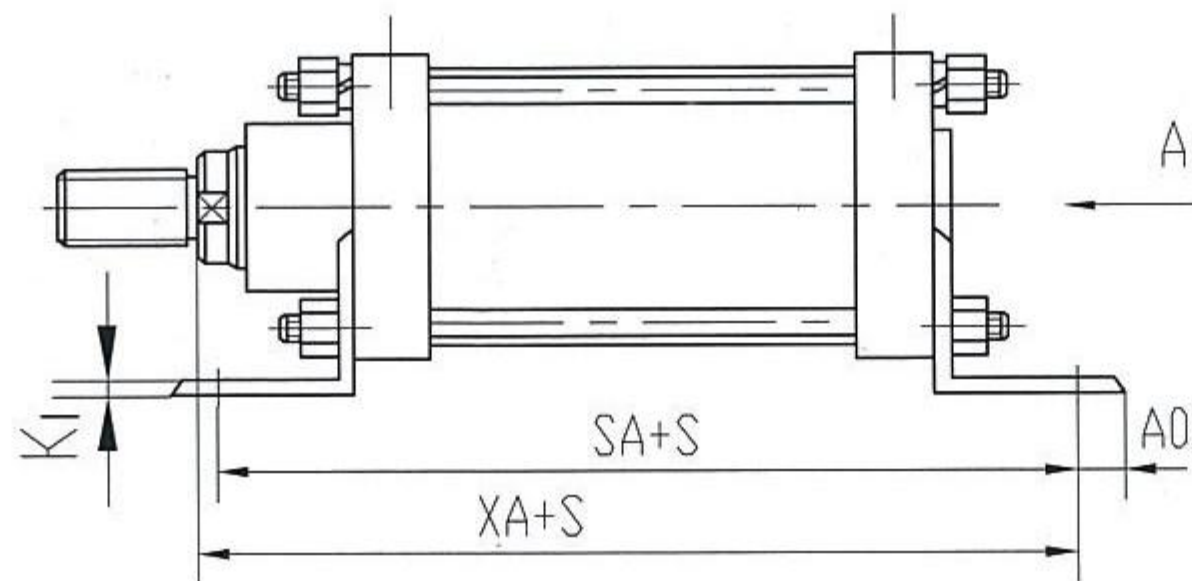
后法兰式 F

F head side flange type



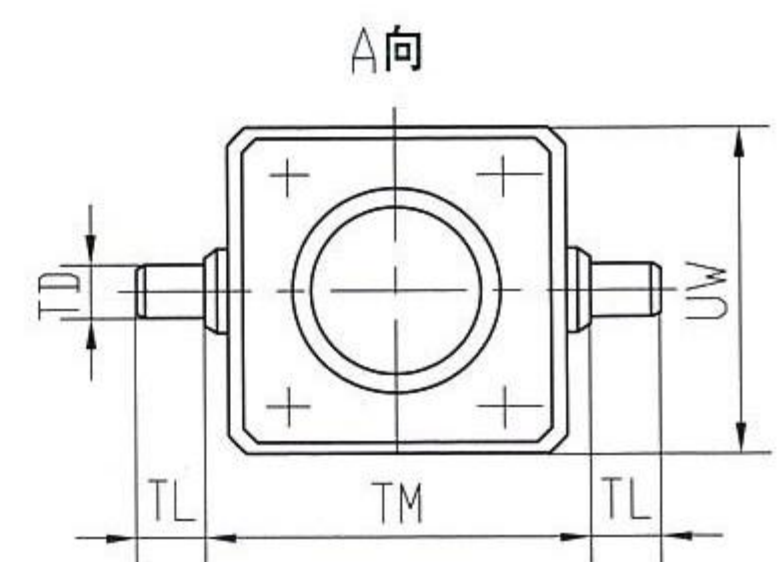
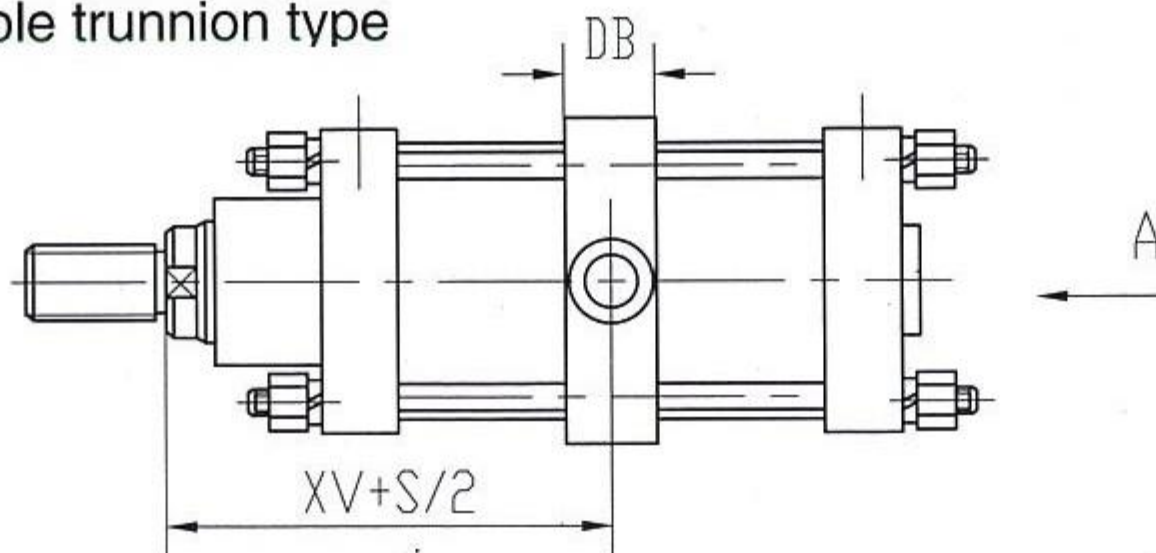
脚架式 G

G vertical to axis type



中间摆动式 B

B intermediate movable trunnion type



系列规格 / Series specifications	KK	∅d	∅B *	EE	DD*	AM	WH	VD	HG	TG*	E	ZL	L
QGB40	M12 × 1.25	16	34	G1/4"	M6	30	45	21	3	40	55	170	30
QGB50	M12 × 1.25	16	45	G1/4"	M6	30	45	21	3	48	65	170	30
QGB63	M20 × 1.5	25	45	G3/8"	M8	35	55	26	3	60	80	200	35
QGB80	M20 × 1.5	25	55	G3/8"	M10	35	55	26	4	75	100	200	35
QGB100	M27 × 1.5	32	55	G1/2"	M10	40	70	34	4	90	115	245	45
QGB125	M27 × 1.5	32	65	G1/2"	M12	40	70	34	4	112	145	245	45
QGB160	M30 × 1.5	40	80	G3/4"	M16	50	88	40	4	145	190	293	55
QGB200	M30 × 1.5	40	80	G3/4"	M16	50	88	40	5	180	225	293	55
QGB250	M39 × 1.5	50	110	G1"	M20	60	100	50	5	225	280	350	60

注: *表示与92年以前样本有变动 / Note: variation made to samples before 1992.

系列规格 / Series specifications	ZB	K	W	R	UF	∅FB	TF	ZF	∅CD	MR	XD	EW	K ₁	SA	XA	AO	I
QGB40	173	10	35	50	110	9	90	180	15	15	210	30	5	185	200	20	18
QGB50	173	10	35	55	110	9	90	180	15	15	210	30	5	185	200	20	18
QGB63	203	12	43	65	135	11	110	212	20	20	250	30	6	225	240	23	20
QGB80	204	12	43	80	160	11	135	212	20	20	250	30	6	225	240	23	26
QGB100	249	16	54	100	200	13	160	261	25	25	310	40	8	275	295	30	26
QGB125	249	16	54	120	230	13	180	261	25	25	310	40	8	275	295	30	33
QGB160	297	20	68	150	270	17	230	313	30	30	373	50	10	335	358	35	35
QGB200	298	20	68	190	340	17	280	313	30	30	373	50	10	335	358	35	35
QGB250	355	25	75	230	410	21	340	375	40	40	440	60	12	410	430	45	45

系列规格 / Series specifications	H	TR	AH	∅AB	DB	XV	TM	TL	∅TD	UW	R ₁	E ₁
QGB40	35	50	53	9	30	107.5	75	15	15	58	5	70
QGB50	32.5	55	54	9	30	107.5	85	15	15	70	5	75
QGB63	42	65	65.5	11	35	127.5	100	20	20	85	5	90
QGB80	43.5	80	65	11	50	127.5	150	30	30	105	5	110
QGB100	53.5	100	83	13	50	157.5	175	30	30	126	5	130
QGB125	47.5	120	87	13	60	157.5	210	40	40	155	5	145
QGB160	57.5	150	110	17	60	190.5	240	40	40	195	5	190
QGB200	57.5	190	130	17	70	190.5	300	50	50	240	5	225
QGB250	79	230	160	21	100	225	360	70	70	300	5	280

缸径 / bore	QGB 气缸重量 / weight(kg)
40	2.19+0.0051S
50	3.01+0.0054S
63	5.76+0.0094S
80	8.87+0.0135S
100	15.25+0.0217S
125	23.49+0.0276S
160	45.31+0.0450S
200	60.26+0.0546S
250	79.64+0.0794S

注: S 为气缸行程(mm)

Note: The letter "s" is the stroke of pneumatic cylinder (mm)

