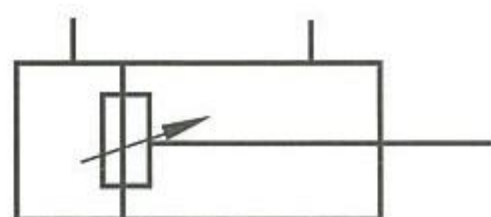


LCZ 型双作用气缸 LCZM 型双作用无油润滑气缸  
 LCZ TYPE DOUBLE ACTING CYLINDER  
 LCZM TYPE DOUBLE ACTING OIL-FREE CYLINDER

图形符号

Diagrammatic sketch



引进德国专用技术制造,机电部第一批基础件名优产品

Introduced German technology Entitled "top quality product" by the Elctromechanical Department of China

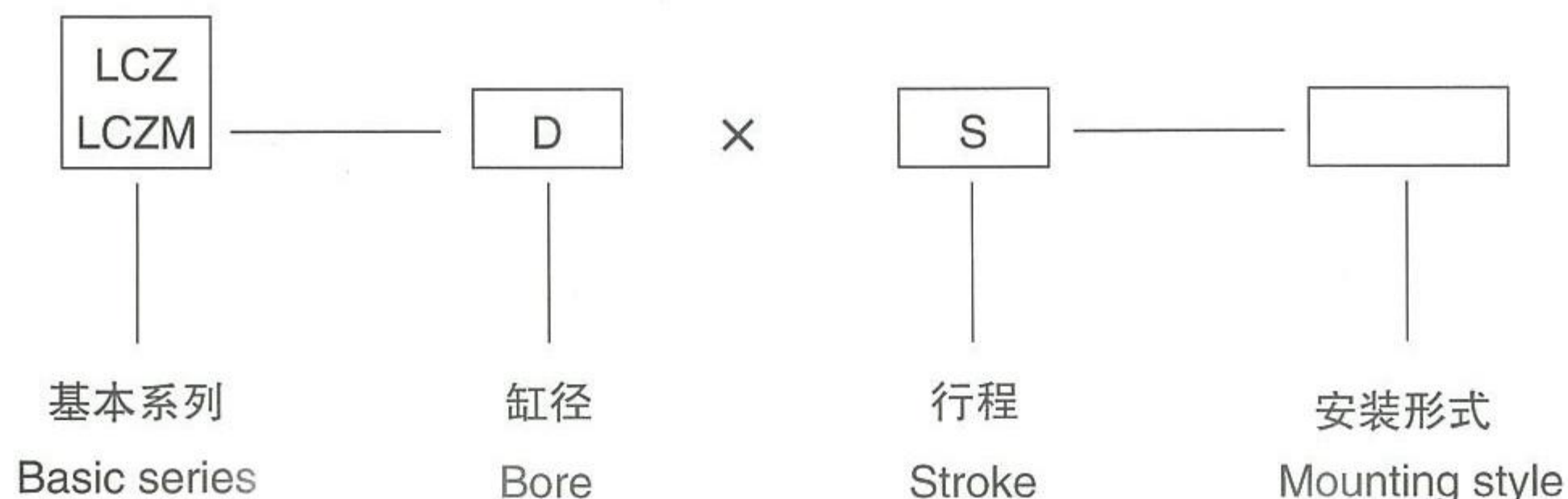
特点:

- \* 采用铝合金前后端盖及缸筒外形美观,重量轻。活塞杆表面镀铬。
- \* 四拉杆式结构。
- \* 起动压力  $\leq 0.02\text{MPa}$ , 寿命  $>1000\text{km}$  以上,蠕动性小。
- \* 环境温度  $-25 \sim +80^\circ\text{C}$  (在不冻结条件下)。
- \* 可以按 ISO 标准式 Cetop 标准生产的气缸互换。
- \* 行程长度按用户要求,在规定范围内任选。

Features

- \* Aluminium end caps and cylinder body, beautiful outlook, light weight, piston surface chromed.
- \* Four draw bars construction
- \* Starting pressure  $\leq 0.02\text{ Mpa}$ , service life  $>1000\text{km}$ , smooth movement.
- \* Ambient temperature  $-25 \sim 80^\circ\text{C}$  (nonfreezing condition).
- \* ISO standard production, interchangeable with the Cetop products.
- \* Various options provided in the stroke table.

型号说明 / Model example



### 说明 SPECIFICATIONS

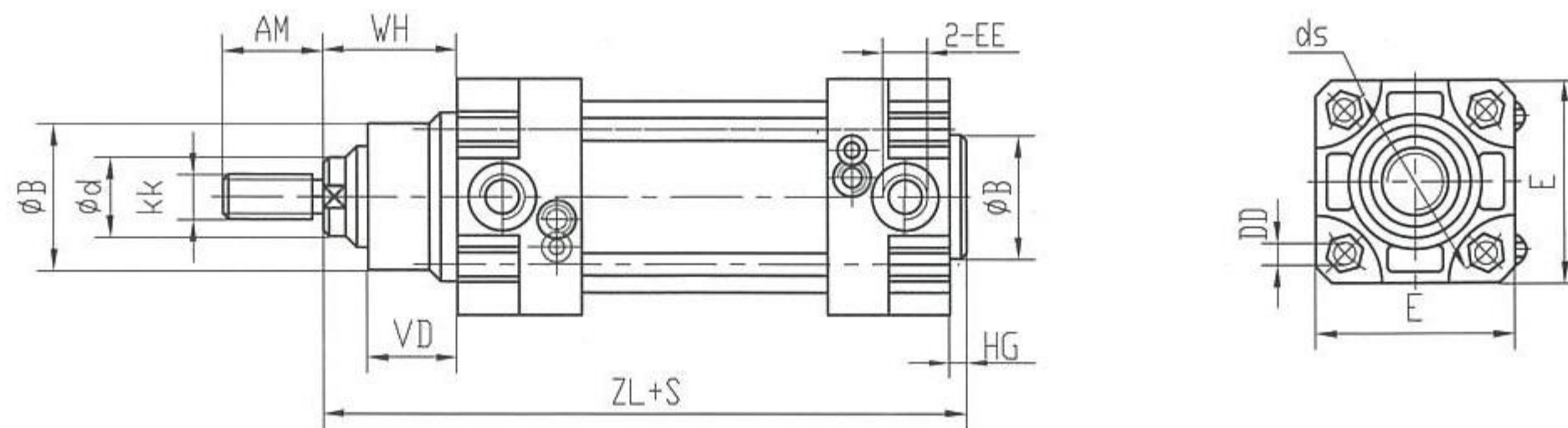
固定方式 / MOUNTING STYLE	参见技术数据 / TECHNICAL DATA
气口接头 活塞杆接头 / ADAPTERS FOR AIR INLET AND PISTON ROD	按 ISO6431/ISO6431 STANDARD
缓冲装置 / CUSHION	双向缓冲行程长缓冲可调 LONG ADJUSTABLE CUSHION STROKE IN BOTH DIRECTIONS
工作介质 / WORKING MEDIA	压缩空气 / COMPRESSED AIR
温度 (°C) / TEMPERATURE	-25 ~ +80
缸筒材料 / CYLINDER TUBE MATERIAL	铝、阳极氧化 / OXIDIZED ALUMINIUM
安装位置 / MOUNTING POSITION	任意 / FREE
工作压力 / WORKING PRESSURE	0.15 ~ 1.0
活塞运动速度 (mm/s) PISTON SPEED	50 ~ 500



### 理论作用力 N / THEORETICAL APPLIED FORCE N

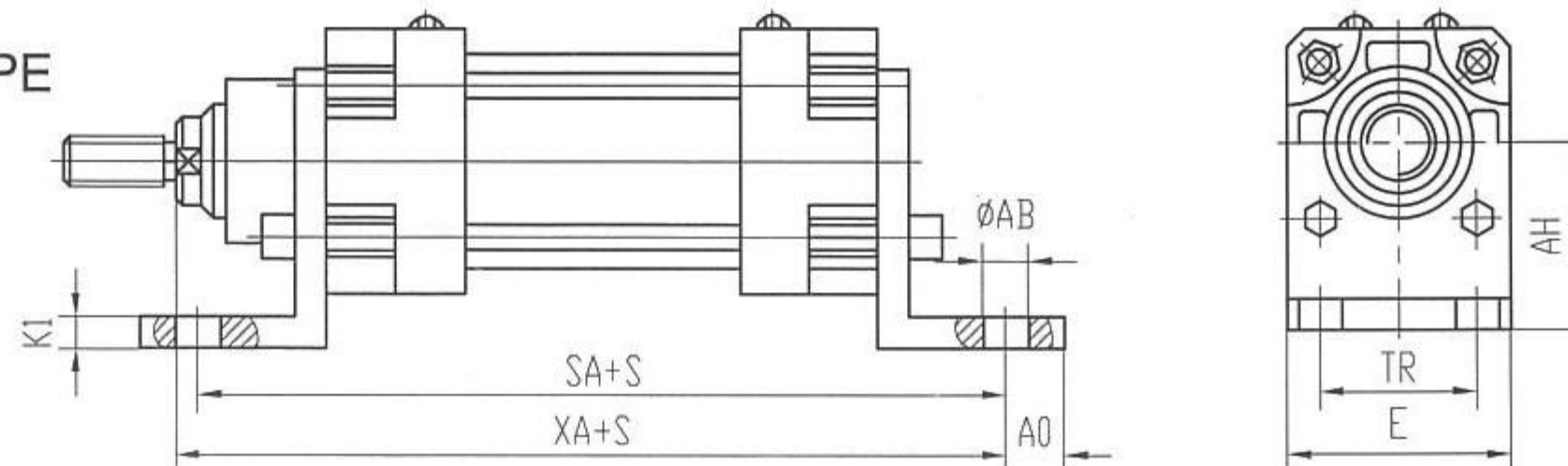
缸径 $\Phi D$		25	32	40	50	63	80	100	125	160	200
工作压力为 0.4MPa 时 WORKING PRESSURE 0.4Mpa	推力(N) PUSHING FORCE	196	322	502	785	1247	2010	3141	4908	8042	12566
	拉力(N) PULLING FORCE	164	276	422	660	1121	1814	2945	4626	7540	12064
工作压力为 0.1MPa 时 WORKING PRESSURE 0.1Mpa	推力(N) PUSHING FORCE	490	804	1256	1963	3117	5026	7853	12271	20106	31416
	拉力(N) PULLING FORCE	412	691	1055	1649	2803	4535	7363	11564	18850	30160
行程范围 (mm) STROKE RANGE (mm)		$\geq 60$ $\leq 400$	$\geq 70$ $\leq 600$	$\geq 70$ $\leq 700$	$\geq 80$ $\leq 1000$	$\geq 80$ $\leq 1400$	$\geq 100$ $\leq 1400$	$\geq 100$ $\leq 3000$	$\geq 120$ $\leq 3000$	$\geq 140$ $\leq 3000$	$\geq 140$ $\leq 3000$

### 基本型 / STANDARD TYPE



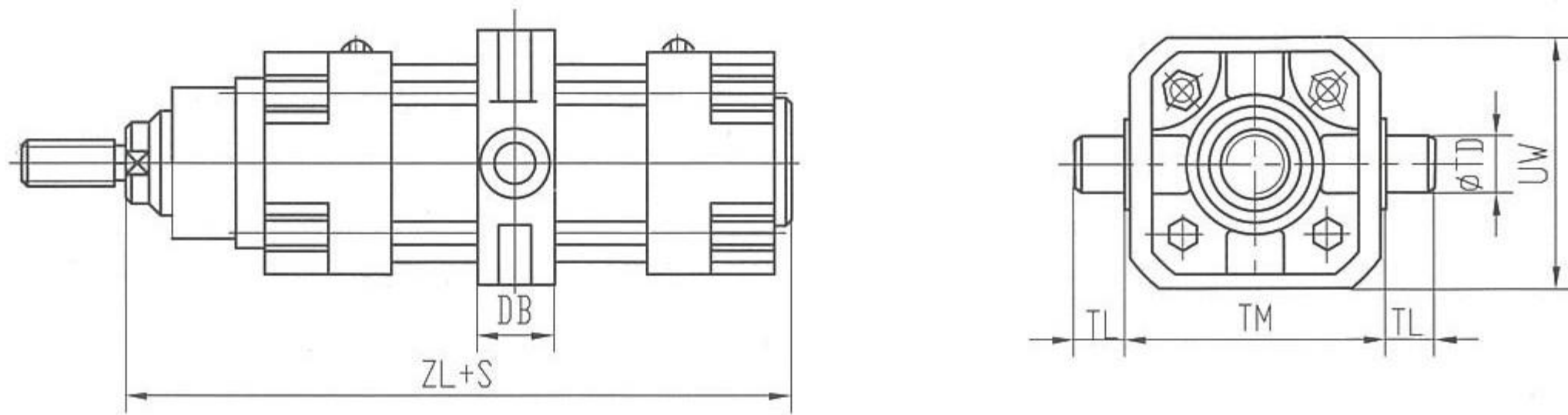
### 脚架式 MS1

### MS1 VERTICAL TO AXIS TYPE



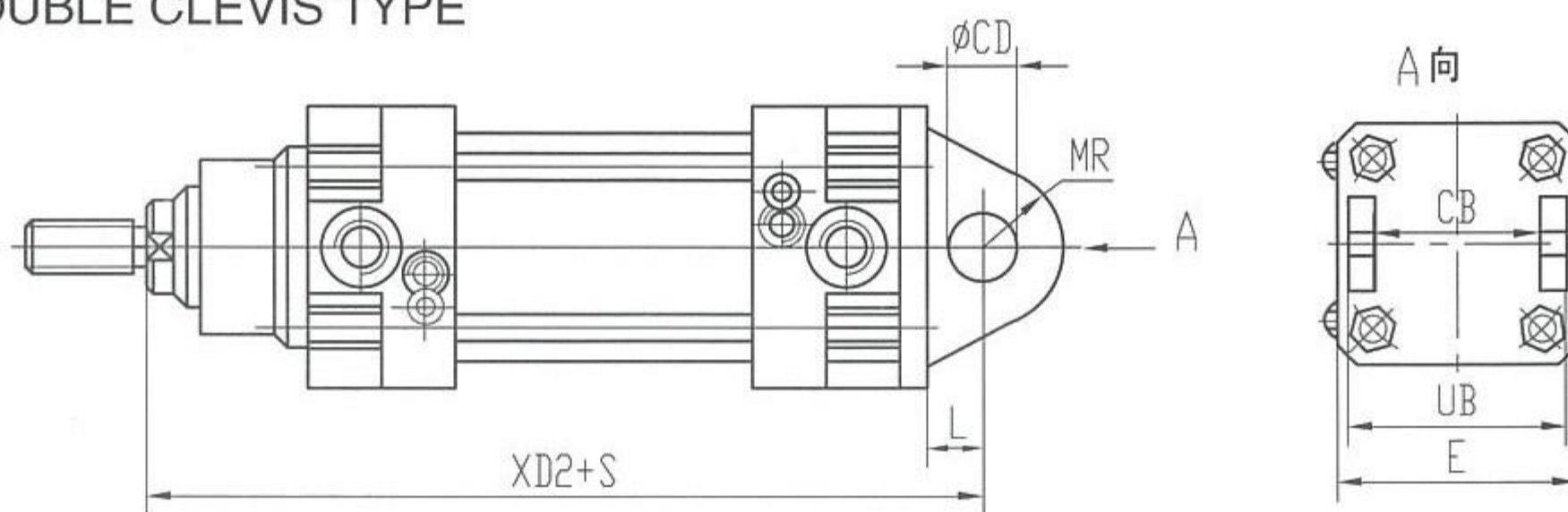
中间摆轴式 MT4

MT4 INTERMEDIATE MOVABLE TRUNNION TYPE



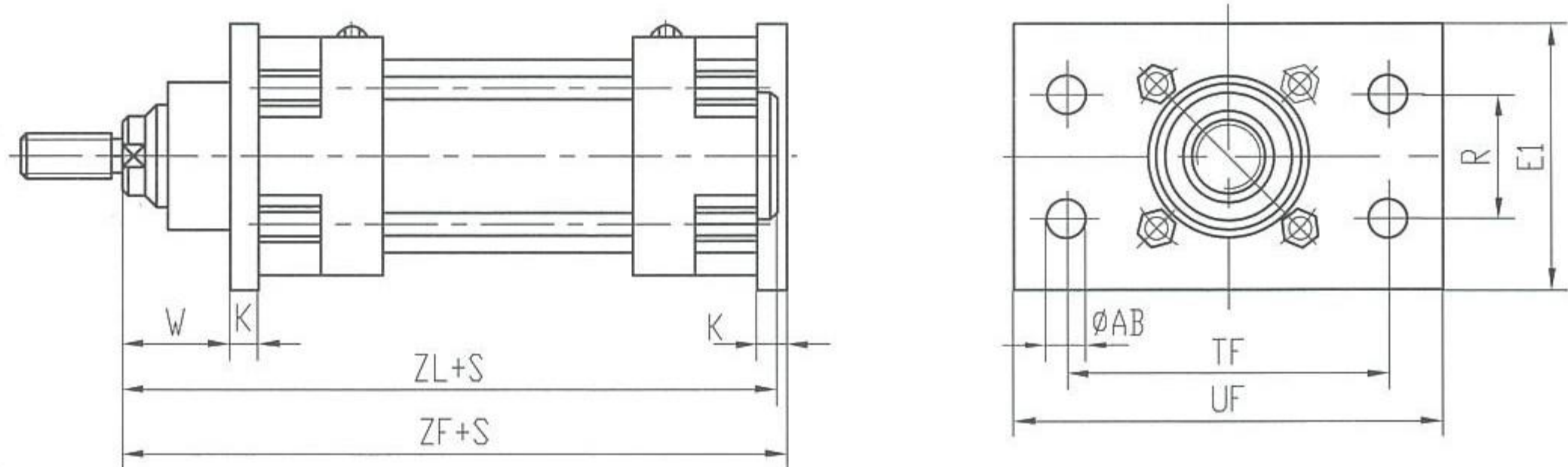
尾部双耳式 MP2

MP2 ROD END DOUBLE CLEVIS TYPE



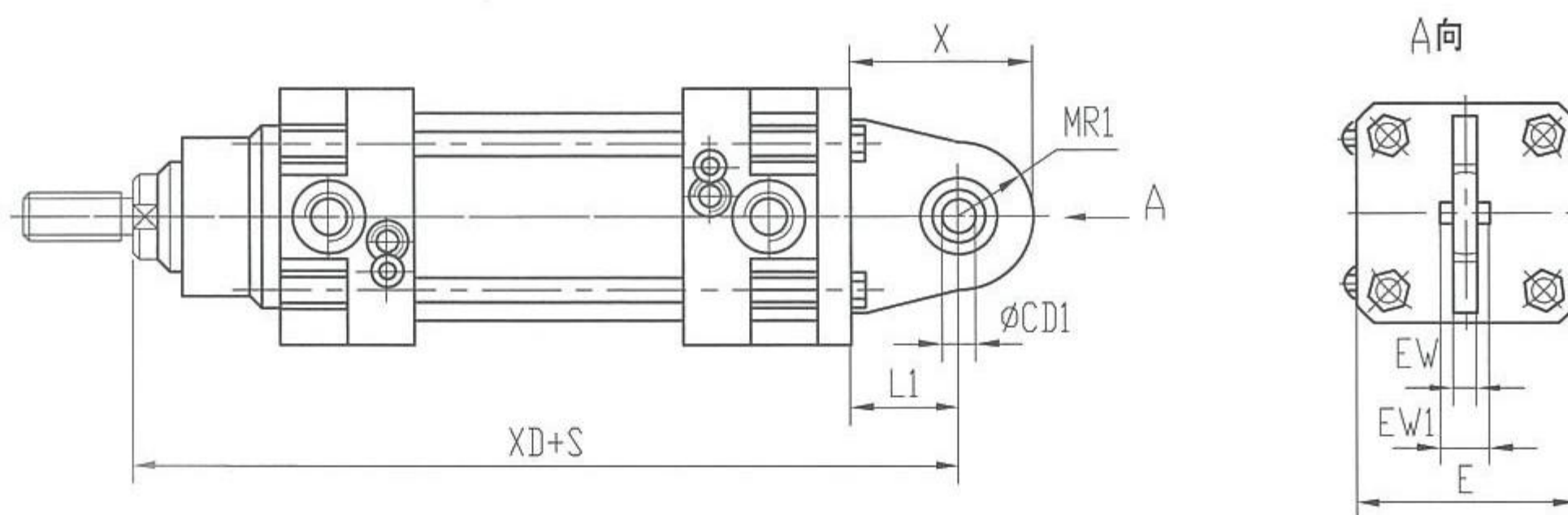
前法兰式 MF1/ROD SIDE FLANGE TYPE

前法兰式 MF2/HEAD SIDE FLANGE TYPE



尾部单耳式 MP4

MP4 ROD END SINGLE CLEVIS TYPE



公差 TOLERANCE							*	*	*	*	*	*				
缸径 $\Phi$ DBORE	AM	WH	VD	E	HG	AO	ZL	SA	XA	XD <sub>2</sub>	ZF	XD	K1	TR	d5	AH
25	18	26	20	46	3	11.5	118	137	139	137	125	137	4	32	48	32
32	22	26	20	46	3	11.5	123	142	144	142	130	142	4	32	48	32
40	24	30	18	58	4	14.5	139	161	163	160	145	164	5	36	58	36
50	32	37	25	64	4	15	147	170	175	170	155	175	5	45	65	45
63	32	37	25	78	4	14	162	185	190	190	170	196	5	50	78	50
80	40	46	34	100	6	19	180	210	215	210	190	212	6	63	102	63
100	40	51	35	116	6	20	195	220	230	230	205	232	6	75	120	71
125	54	61	45	140	6	20.5	235	250	270	275	245	279	6	90	150	90
160	72	80	60	180	8	15	268	300	320	315	280	320	11	115	190	115
200	72	90	70	220	10	15	290	320	345	335	300	344	12	135	232	135

公差 TOLERANCE		h14	h14				+0.5		$\Delta$	$\Delta$							
缸径 $\Phi$ DBORE	DB	TM	TL	UW	L	L1	CB	UB	EW	EW1	K	TF	UF	R	E1	W	X
25	22	60	12	60	14	14	26	45	6	9	10	64	80	32	60	16	-
32	22	50	12	60	14	14	26	45	6	9	10	64	80	32	60	16	-
40	30	63	16	70	15	19	28	52	7	10	10	72	92	36	60	20	-
50	30	75	16	80	15	22	32	60	7	12	12	90	110	45	70	25	-
63	35	90	20	90	20	26	40	70	10	14	12	100	120	50	80	25	-
80	35	110	20	110	20	26	50	90	10	14	16	126	150	63	100	30	-
100	40	132	25	135	25	28	60	110	12	16	16	150	180	75	120	35	-
125	40	160	25	165	30	35	70	130	16	20	16	180	222	90	140	45	75
160	45	200	32	210	35	42	90	170	18	22	20	230	278	115	180	60	86
200	50	250	32	260	35	42	90	170	18	22	20	270	318	135	235	70	86

公差 TOLERANCE			d11			H13	e9	H18		H8	
缸径 $\Phi$ D BORE	$\phi$ d	KK	$\phi$ B	EE	DD	$\phi$ AB	$\phi$ TD	$\phi$ CD	MR	$\phi$ CD1	MR
25	10	M8	30	G1/8"	M5	7	12	10	10	10	17
32	12	M10 x 1.25	30	G1/8"	M5	7	12	10	10	10	17
40	16	M12 x 1.25	35	G1/4"	M6	9	16	12	13	12	22
50	20	M16 x 1.5	40	G1/4"	M6	9	16	12	13	12	24
63	20	M16 x 1.5	45	G3/8"	M8	9	20	16	17	17	28
80	25	M20 x 1.5	50	G3/8"	M10	12	20	16	17	17	30
100	25	M20 x 1.5	55	G1/2"	M10	14	25	20	21	20	34
125	30	M27 x 2	60	G1/2"	M10	16	25	25	26	25	-
160	40	M36 x 2	80	G3/4"	M12	18	32	30	30	30	-
200	40	M36 x 2	80	G3/4"	M14	22	32	30	30	30	-

气缸直径 $\Phi$ D BORE DIAMETER	名义行程 S 时的允差 TOLERANCE AT NORMAL STROKES	
	S ≤ 500	500 < S ≤ 2000
25-50	+2 0	+3.2 0
63-100	+2.5 0	+4 0
125-200	+4 0	+5 0

缸径 * BORE	ZL	SA	XA	XD2	ZF	XD
25-50	± 1.6	± 1.25	± 1.25	± 1.25	± 1.25	± 1.25
63-100	± 2	± 1.6	± 1.6	± 1.6	± 1.6	± 1.6
125-200	± 2.5	± 2	± 2	± 2	± 2	± 2

△ 该尺寸符合 ISO 标准 THE ABOVE DIMENSIONS AGREE WITH THE ISO STANDARD

